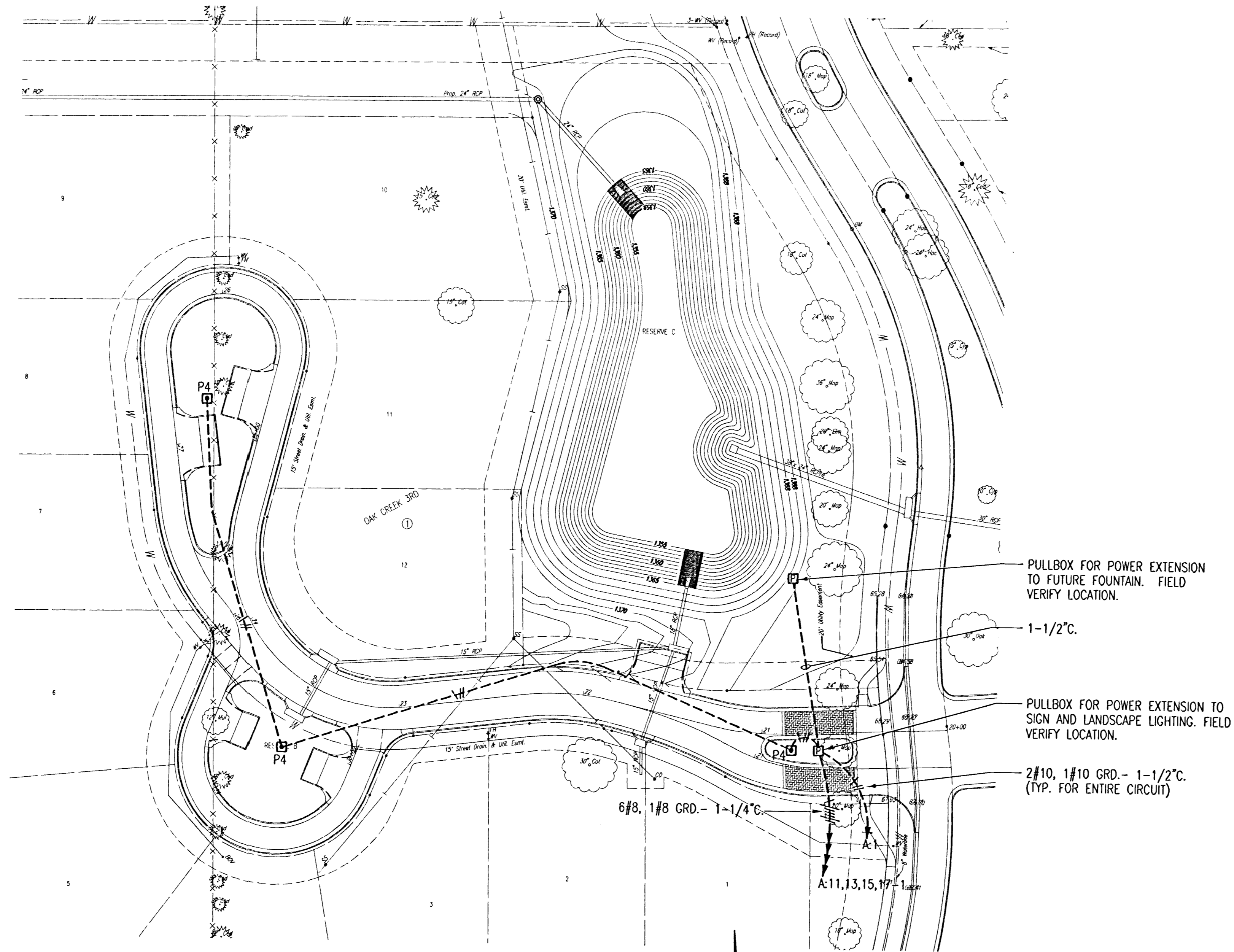


**PLAN NOTES:**

1. MINIMUM CONDUIT SIZE SHALL BE 1".
2. PVC COATED STEEL ELLS AND RISERS AS MANUFACTURED BY ROBROY, PERMA-COLE OR KORKAP SHALL BE USED FOR ALL LOCATIONS.
3. MAXIMUM UNDERGROUND BRANCH CIRCUIT CONDUCTOR PULL/INSTALLATION LENGTH SHALL NOT EXCEED 300'. PROVIDE AND INSTALL PULL BOXES PER DETAIL 1 SHEET 32 FOR ALL BRANCH CIRCUITS INSTALLED WHERE THE PULL/INSTALLATION DISTANCE WILL EXCEED 300'. CONTRACTOR TO DETERMINE PULL BOX LOCATIONS IN THE FIELD.
4. CONDUIT ROUTING SHOWN ON PLANS IS SCHEMATIC ONLY. COORDINATE ROUTING WITH OTHER UTILITIES AND EXISTING TREES.

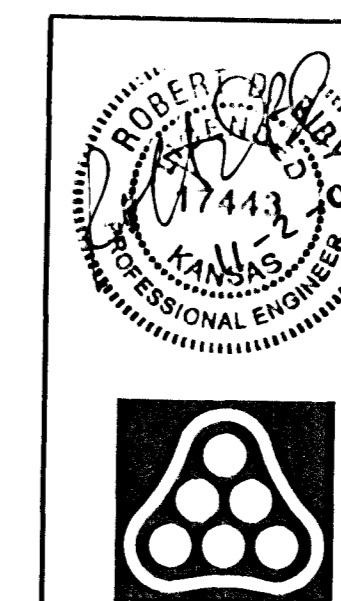


**ELECTRICAL SITE PLAN**

SCALE: 1" = 40'-0"



Saved 10-11-2006 10:45:40 AM by MDB  
 Plot Scale 1:480 10-31-2006 1:28:26 PM by MDB  
 E:\2006\06572\06572 E2 Plan



No.	Revision	By	Date
OAK CREEK DRD - PRIVATE STREETS AND STREET LIGHTING			
<b>ELECTRICAL PLAN</b>			
<b>Professional Engineering Consultants, P.A.</b> 303 S. TOPEKA • WICHITA, KANSAS 67202 316-262-2691 • FAX 316-262-3003			
Designed by	DCG	Job No.	20-06572
Drawn by	MDB	Date	Oct 2006
			Sheet 26 of 45