

BENCHMARK:
 "□" Cut on the SW Corner of Central
 and Garnett.
 Elev. = 1360.34 M.S.L.

Sta. 1+37.9, Line 1
 Const. Std. Double
 Drop Inlet (2'x4')
 Top Elev. = 1357.20

Sta. 0+56.4, Line 1
 Const. Std. Type-1A Single
 Curb Inlet (5' x 3')
 Top Elev. = 1356.50

Sta. 0+00, Begin Line 1
 Begin construction of 18" RCP.
 Connect to existing curb inlet.
 Reshape invert as needed.
 Reshaping, sealing, grouting,
 connect to inlet, etc. shall be
 subsidiary to cost of RCP.

Remove and
 replace sidewalk
 as needed

Central Avenue

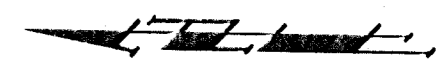
SSWH
 RIM=1355.40
 (E)=1347.50
 (N)=1343.49
 (Invert)=1346.3

18" RCP
 E=1350.60

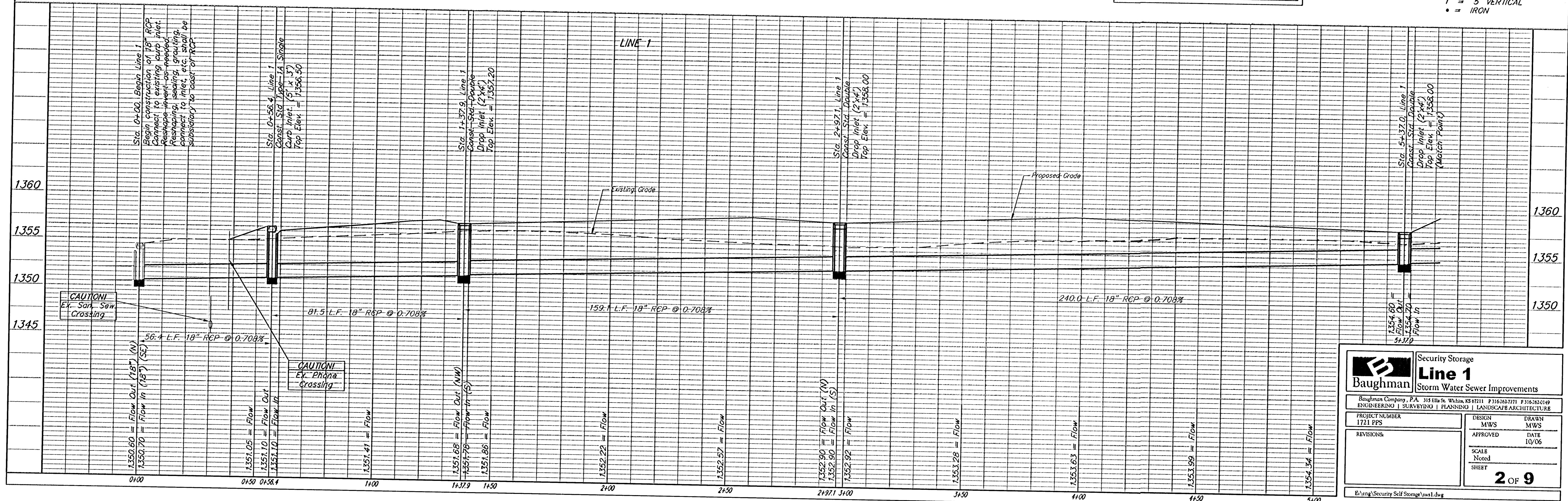
CAUTION!
 Ex. Phone
 Crossing

CAUTION!
 Ex. San. Sew.
 Crossing

Existing Utilities on site should be
 disconnected prior to start of
 construction. Contractor to verify and
 coordinate with General Contractor.



SCALE:
 1" = 20' HORIZONTAL
 1" = 5' VERTICAL
 • = IRON



		Security Storage Line 1 Storm Water Sewer Improvements	
<small>Baughman Company, P.A. 315 E. St. Wichita, KS 67211 P 316-262-7271 F 316-262-0149 ENGINEERING SURVEYING PLANNING LANDSCAPE ARCHITECTURE</small>			
PROJECT NUMBER 1721 PPS	DESIGN MWS	DRAWN MWS	DATE 10/06
REVISIONS:	APPROVED	SCALE Noted	SHEET 2 OF 9
<small>E:\Veng\Security Self Storage\lws1.dwg</small>			