

**CONSTRUCTION ENTRANCE INFORMATION:**  
 Contractor Shall Construct and Maintain Approved Entrance as Discussed in the Storm Water Pollution Prevention Plan Guidelines.—Entrance Shall be a Minimum of 30' Wide by 85' in Length With 4- 6" Dia. Stone at a Depth of 8".

Clean Gutters Throughout Construction to Ensure Sediment is Not Allowed to Wash into Curb Inlets in Right Of Way.

Install and Maintain 50' Approved Silt Fence as Shown Per Detail This Sheet.

Install and Maintain Curb Inlet Protection Per Detail, This Sheet.

Install and Maintain Straw Bale Inlet Protection Per Detail, This Sheet.

Install and Maintain Straw Bale Inlet Protection Per Detail, This Sheet.

Install and Maintain 930' Approved Silt Fence as Shown Per Detail This Sheet.

Install and Maintain Straw Bale Inlet Protection Per Detail, This Sheet.

### BENCHMARK

"□" Cut on the SW Corner of Central and Garnett.  
 Elev. = 1360.34 M.S.L.

### LEGAL DESCRIPTION

Lot 2, EXCEPT the South 100 feet thereof, and EXCEPT the North 205 feet of the East 160 feet thereof, in Gilders Gardens Subdivision, Sedgwick County, Kansas.

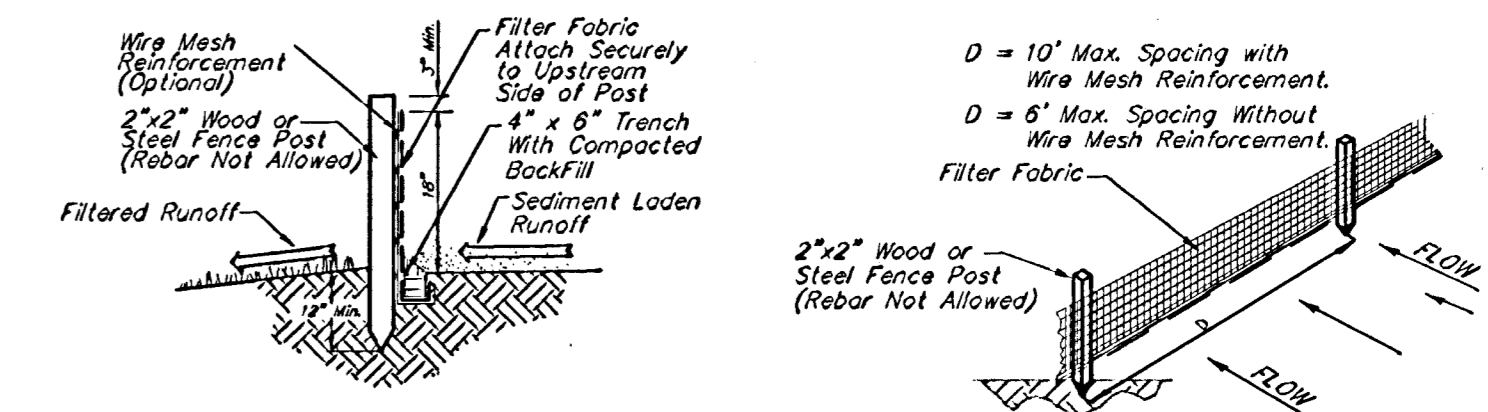
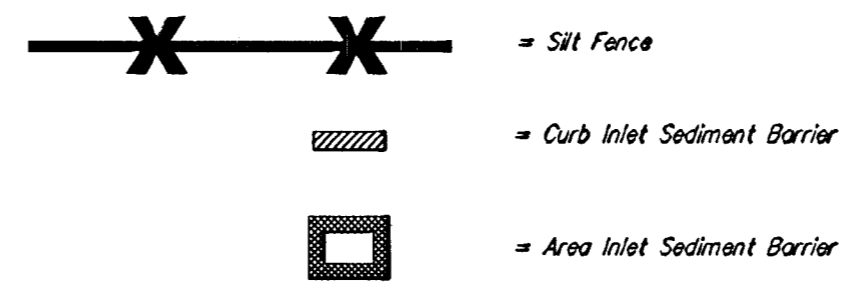
### SITE INFORMATION

Total Area: ±125,368 sq. ft. (2.88 acres)  
 Impervious Area: ±109,081 sq. ft. (2.51 acres)  
 Building (Office) Area: 1,635 sq. ft.  
 Parking Required: 1 per 250 sq. ft.=7 spaces  
 1 Accessible Space Required  
 Parking Provided: 9 Spaces, plus 1 Accessible Stall

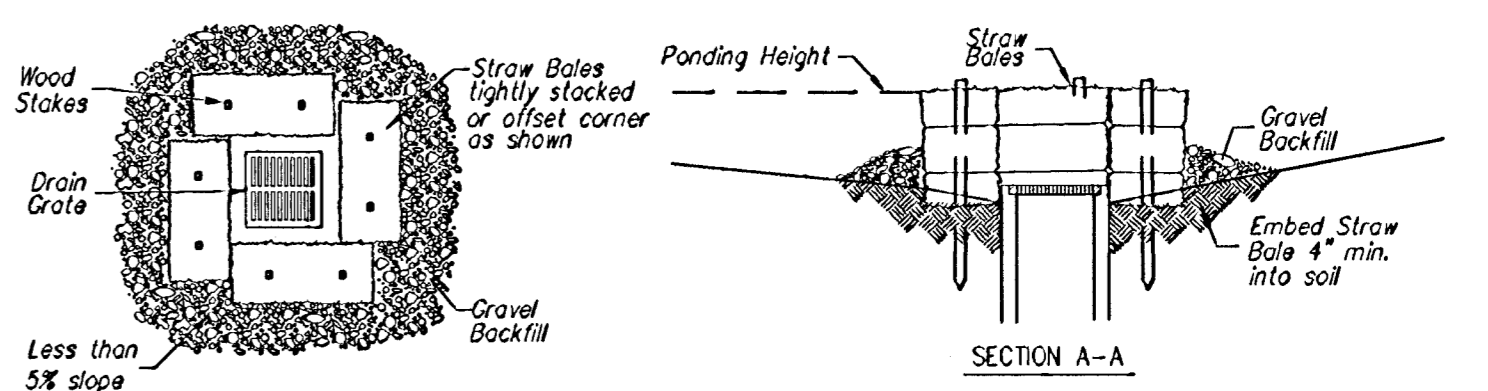
### EROSION CONTROL NOTES:

- No land clearing or grading shall begin until all applicable erosion control measures have been installed. This project is subject to this SWPP Plan. The Contractor shall comply with any unusual requirements as necessary for the site to be in compliance during construction, per this plan and City specs (See #11).
- All exposed areas shall be seeded as specified within 30 days of final GRADING.
- Should construction stop for longer than 15 days, the site shall be seeded as specified.
- Maintain erosion control measures after each rain and at least once a week.
- This plan shall not be considered all inclusive as the contractor shall take all necessary precautions to prevent soil sediment from leaving the site.
- Contractor shall comply with all state and local ordinances that apply.
- Additional erosion and sediment control measures will be installed if deemed necessary by on site inspection.
- Land disturbing activities shall not commence until approval to do so has been received by governing authorities.
- If installation of storm drainage system should be interrupted by weather or nightfall, the pipe ends shall be covered with filter fabric.
- See Landscape Plan for ground treatments in all disturbed areas beyond impervious surfaces.
- This SWPP Plan should be in job trailer and/or on site at all times. The Contractor is responsible for any needed changes, updates or maintenance to BMP's on site. This plan may change and updates need to be recorded and documented on the plan. This plan is a flexible plan, due to changing site conditions and weather. Please inform Landscape Architect and/or Engineer of changes to plan.
- ANY substitutions for the sediment control devices shown, must be approved by the Landscape Architect and/or Engineer prior to any uses on site.
- An NPDES Permit Application has been submitted for this property. A copy of this application must be kept at the job site for the duration of the construction process.

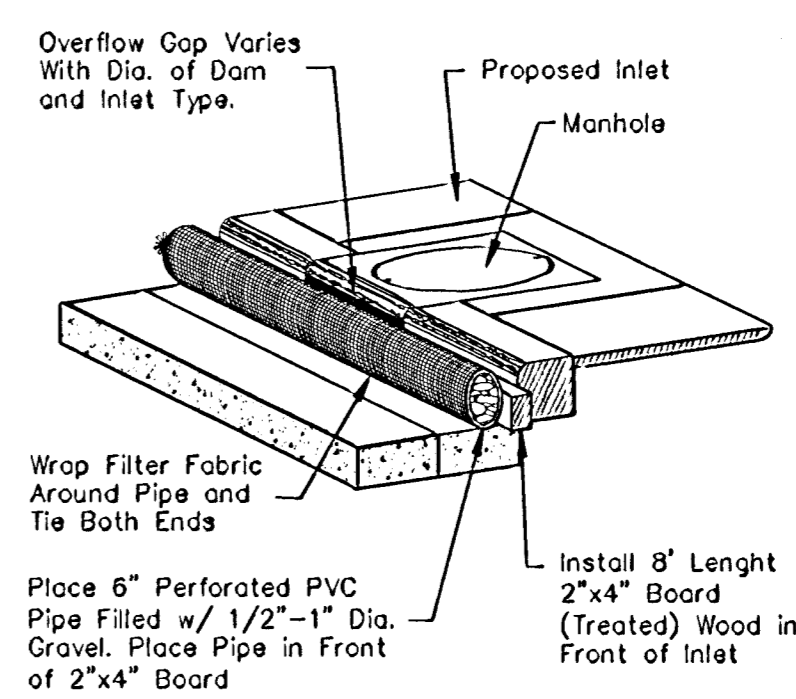
### EROSION CONTROL LEGEND



1 SILT FENCE DETAIL  
 NOT TO SCALE



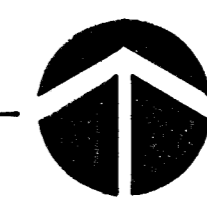
2 STRAW BALE BARRIERS FOR AREA INLETS  
 NOT TO SCALE



3 TYPE 1 INLET PROTECTION  
 NOT TO SCALE

## SITE EROSION CONTROL PLAN

Scale 1"= 30'-0"



<b>Security Self Storage</b> <b>Erosion Control Plan</b> Storm Water Sewer Improvements	
Baughman Company, P.A. 315 Ellis St. Wichita, KS 67211 P 316-262-7771 F 316-262-0149 ENGINEERING   SURVEYING   PLANNING   LANDSCAPE ARCHITECTURE	
PROJECT NUMBER 1721 PPS	DESIGN MWS
DRAWN MWS	APPROVED DATE 11/06
REVISIONS:	SCALE Noted SHEET
<b>9 OF 9</b>	
E:\eng\Security Self Storage\sws-grading-plan 06-07-E593	