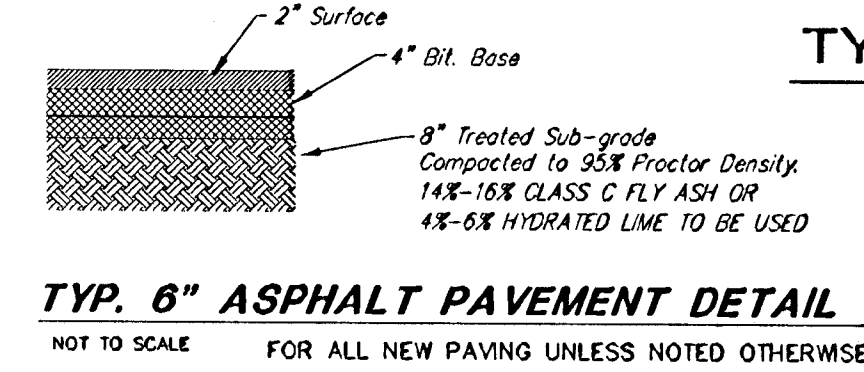
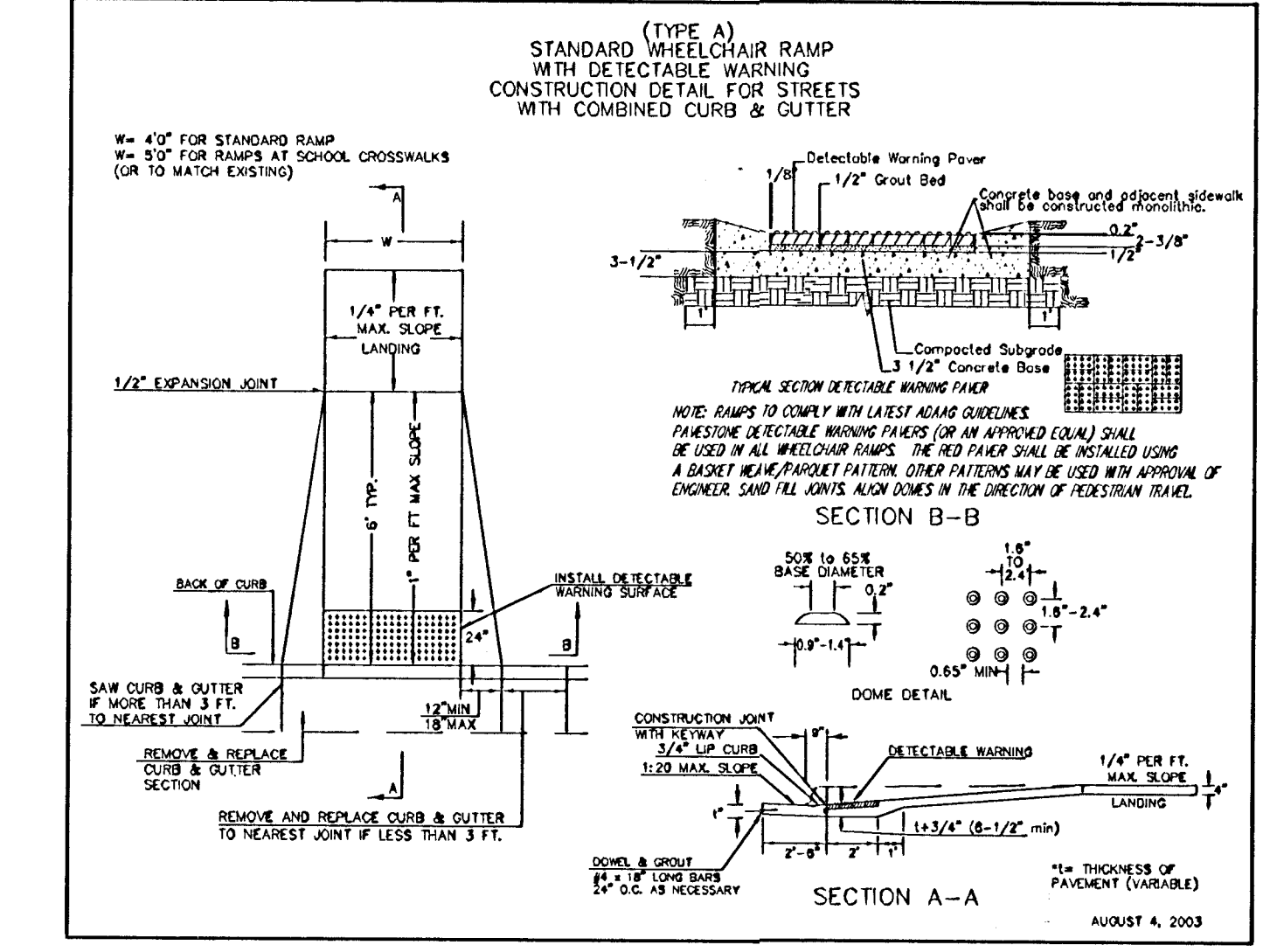
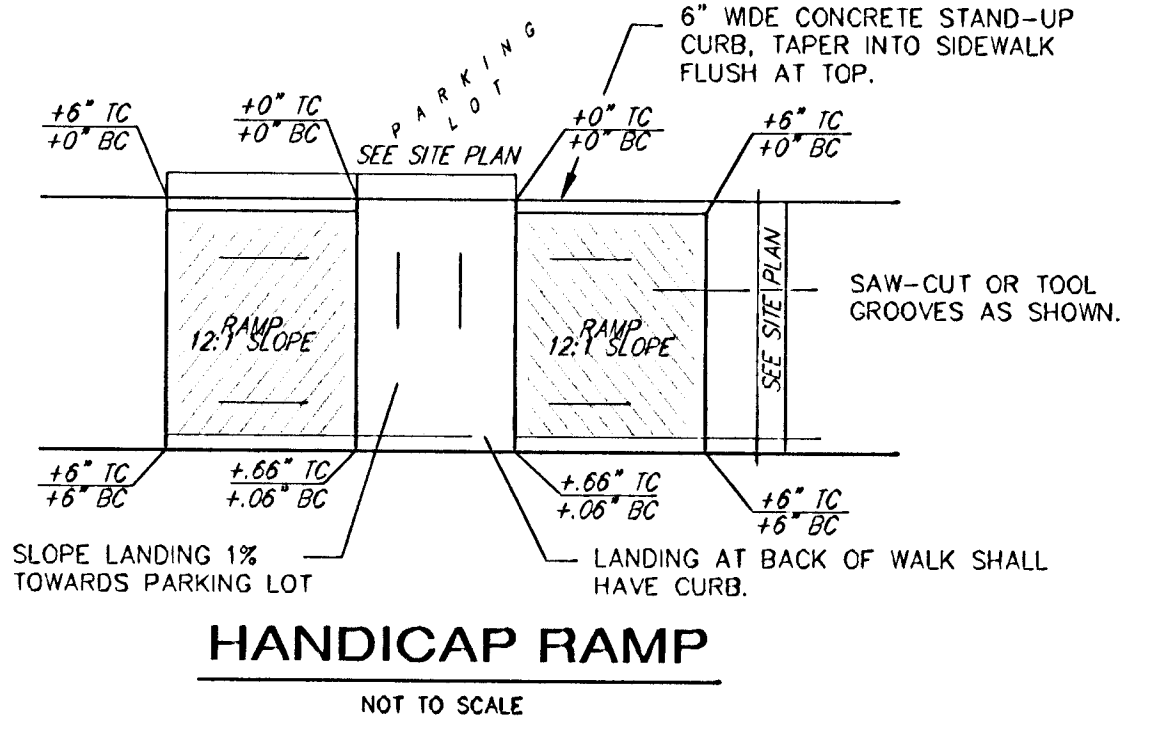
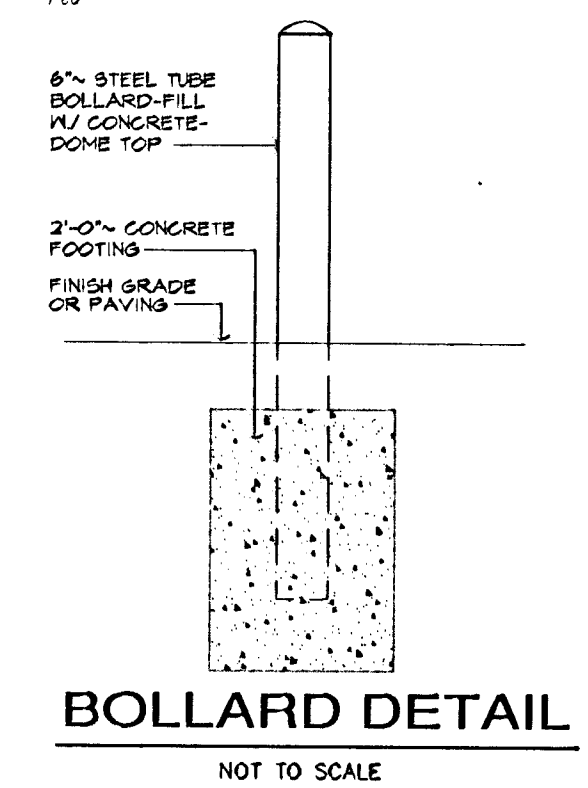
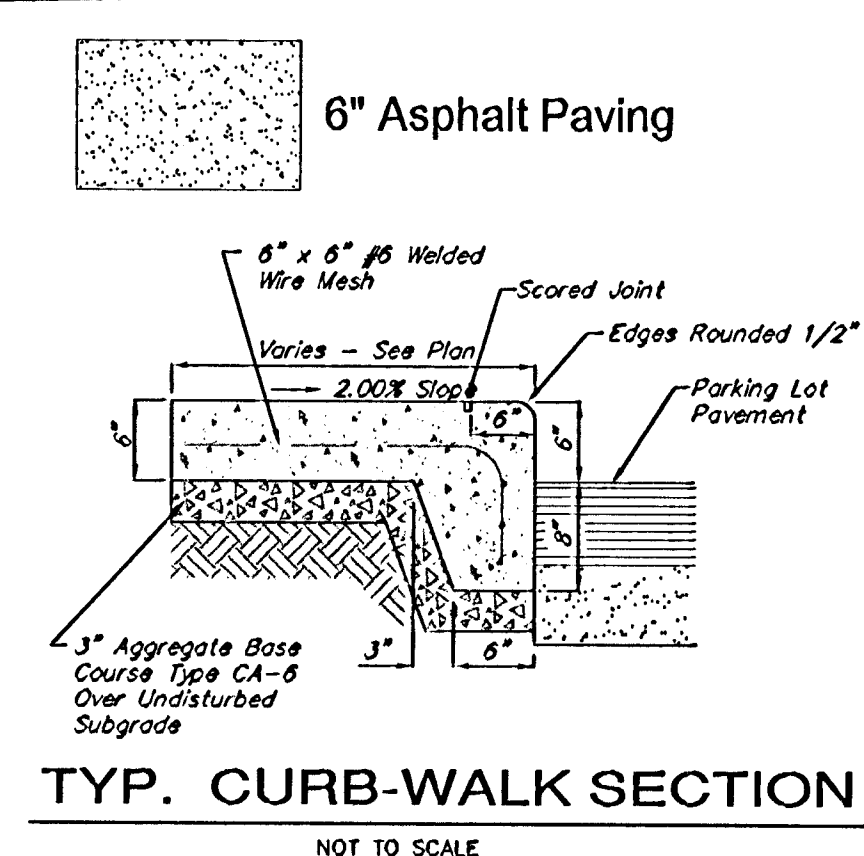
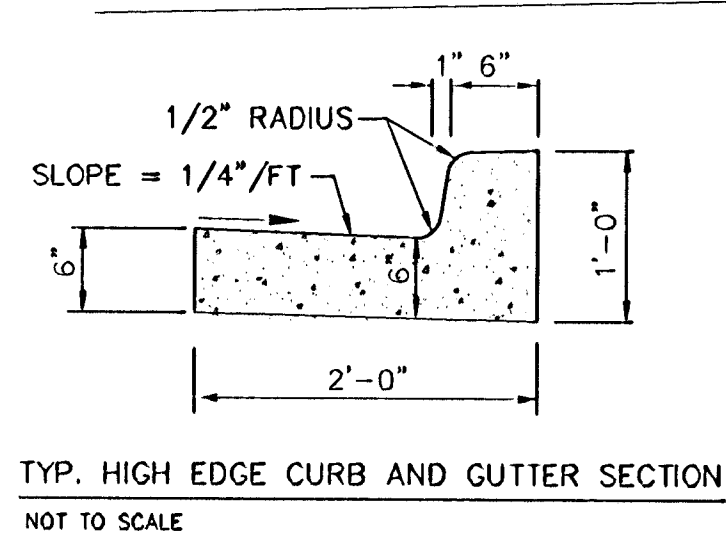
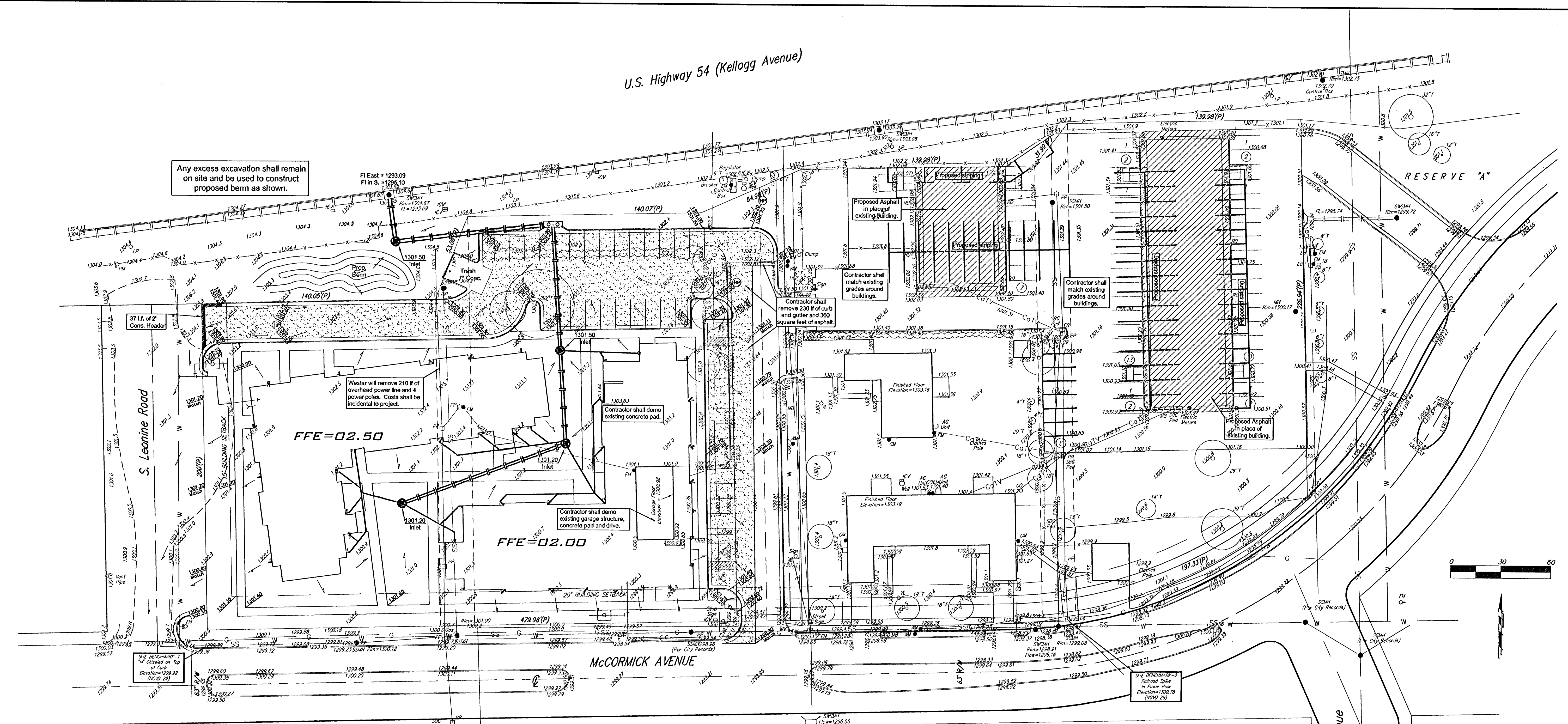


U.S. Highway 54 (Kellogg Avenue)

Any excess excavation shall remain on site and be used to construct proposed berm as shown.



Sheet 5 of 6

Baughman Site Grading Plan
Lot 1, Newman University 2nd
Wichita, Kansas

Baughman Company, P.A. 315 87th St. Wichita, KS 67211 P316262771 P316262149
 ENGINEERING | SURVEYING | PLANNING | LANDSCAPE ARCHITECTURE

REVISIONS 11/21/06	ATD
Recorded parking and paving along main side.	APPROVED DRAWN
SCALE 1"=30'	
DATE October 30, 2006	

E:\eng\Newman Apartments\Site Grading Plan.dwg