

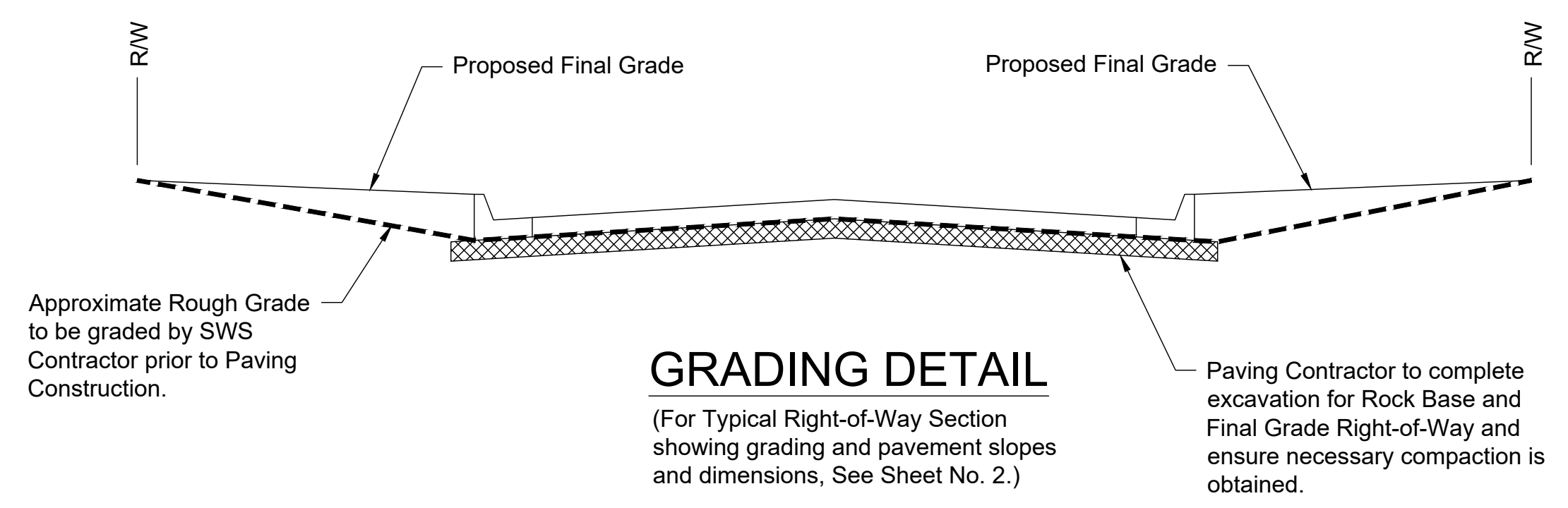
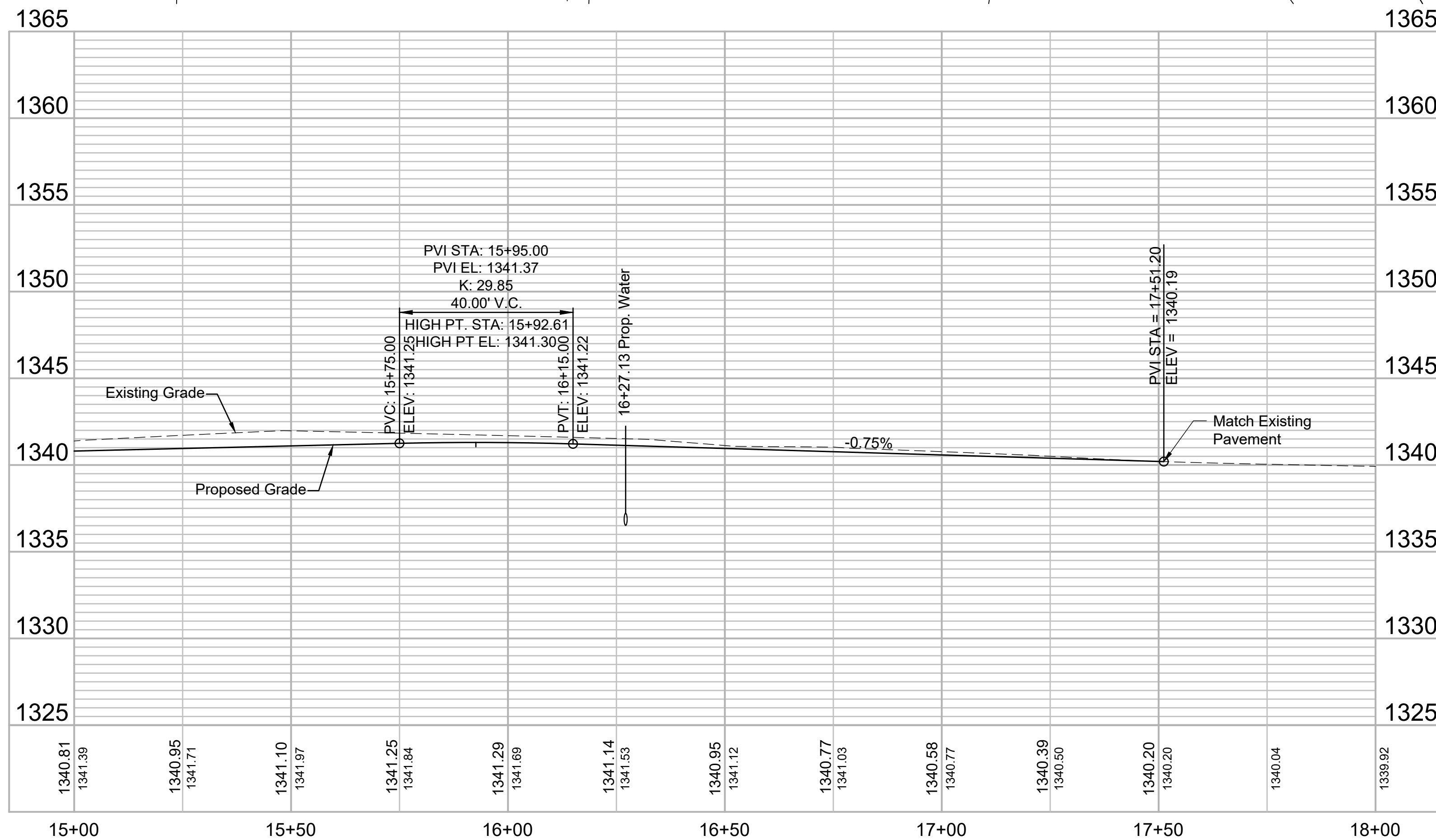
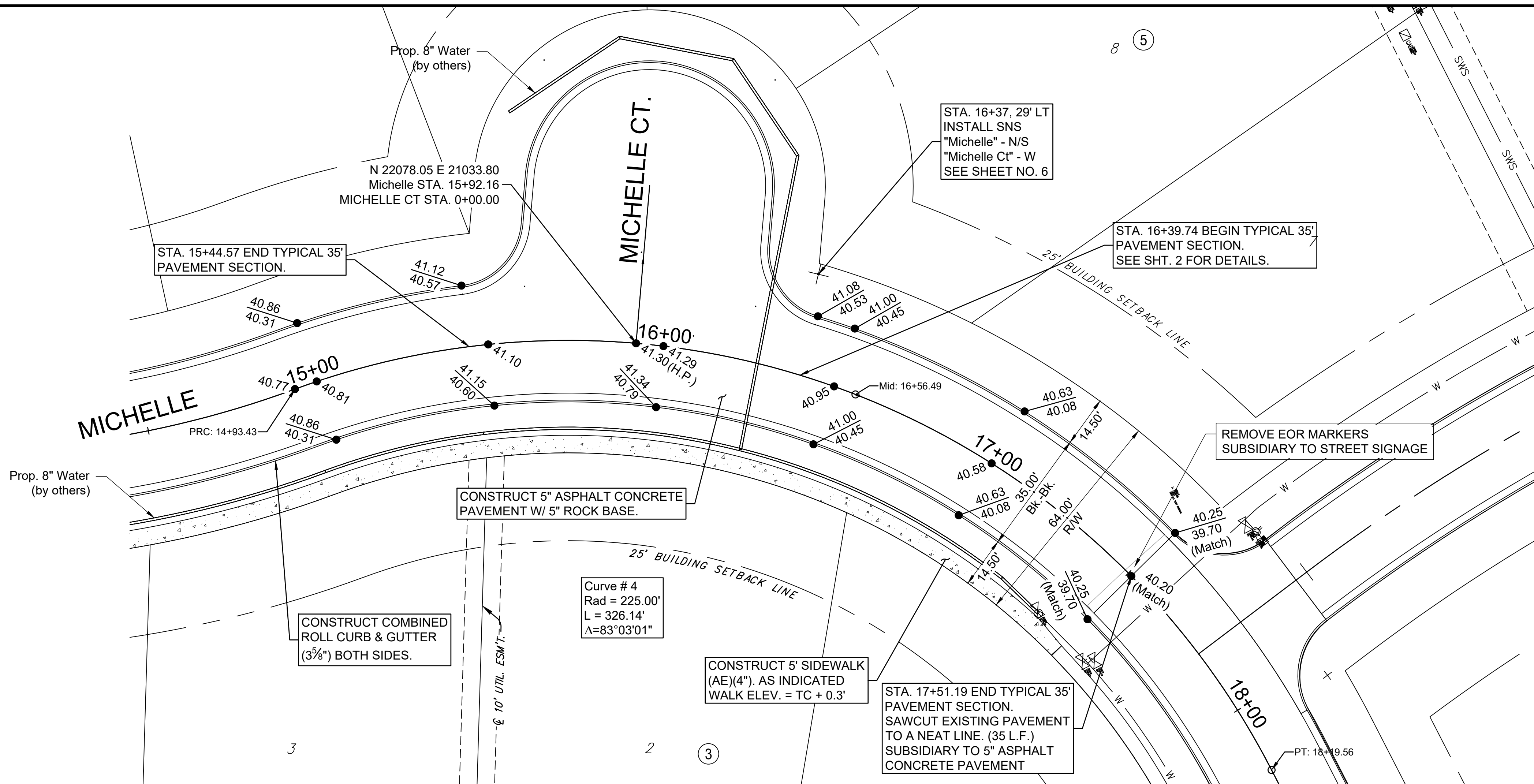
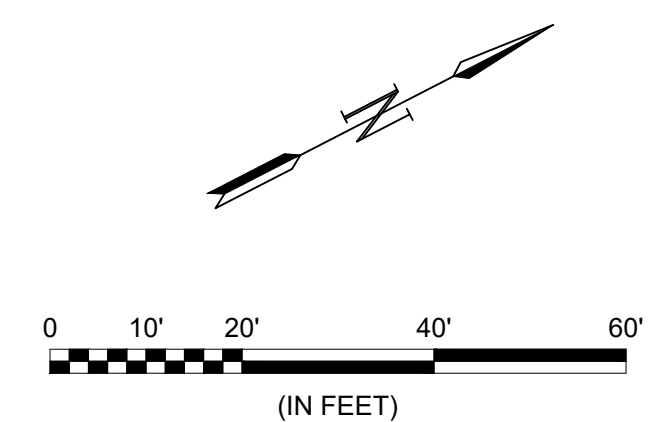


© 2018 GARVER, LLC  
THIS DOCUMENT, ALONG WITH THE IDEAS AND DESIGNS CONVEYED HEREIN, SHALL BE CONSIDERED INSTRUMENTS OF PROFESSIONAL SERVICE AND ARE PROPERTY OF GARVER, LLC. ANY USE, REPRODUCTION, OR DISTRIBUTION OF THIS DOCUMENT, ALONG WITH THE IDEAS AND DESIGN CONTAINED HEREIN, IS PROHIBITED UNLESS AUTHORIZED IN WRITING BY GARVER, LLC OR EXPLICITLY ALLOWED IN THE GOVERNING PROFESSIONAL SERVICES AGREEMENT FOR THIS WORK.



Digitally Signed 10/31/2018

- NOTES:
- Elevations shown are abbreviated. Add 1300 to the displayed elevation to obtain the true elevation.
  - The displayed top of curb elevation is the top of full curb (6 5/8"). Roll curb (3 5/8") shall be constructed except for Valley Gutters.
  - Contractor to grade Right-of-Way according to Grading Detail on this sheet.
  - For details of Michelle Ct. See Sheet No. 10



**GRADING DETAIL**  
(For Typical Right-of-Way Section showing grading and pavement slopes and dimensions, See Sheet No. 2.)

File: L:\2018\18267011 - Casa Bella Phase 5\Drawings\C3D\Paving\Michelle-2.dwg Last Save: 10/31/2018 10:56 AM Last saved by: MTDolechek  
Last plotted by: Dolechek, Mark T. Plot Date: 10/31/2018 11:26 AM Plotter used: None Plot Scale: 1:2.8549 Plot Style: --- Plot Scale: 1:2.8549 Plot Date: 10/31/2018 11:26 AM Plotter used: None

REV.	DATE	DESCRIPTION	BY



CITY OF WICHITA  
WICHITA, KANSAS  
CASA BELLA 2nd ADD.  
PHASE 5 - PAVING

**Michelle Plan & Profile (2 of 2)**

JOB NO.: 18267011  
DATE: SEPT. 2018  
DESIGNED BY: MTD  
DRAWN BY: DRS

BAR IS ONE INCH ON ORIGINAL DRAWING  
IF NOT ONE INCH ON THIS SHEET, ADJUST SCALES ACCORDINGLY.

DRAWING NUMBER