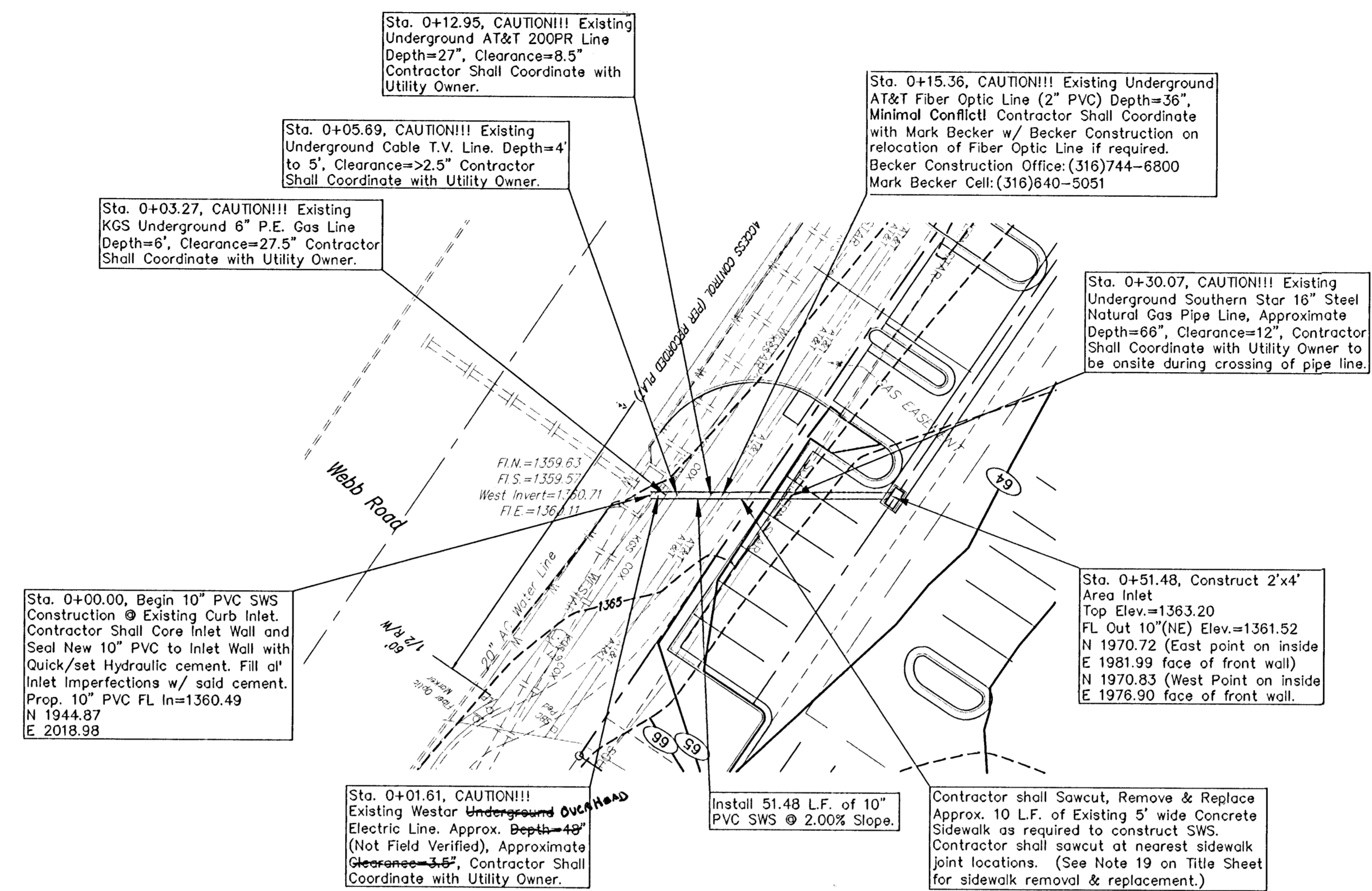
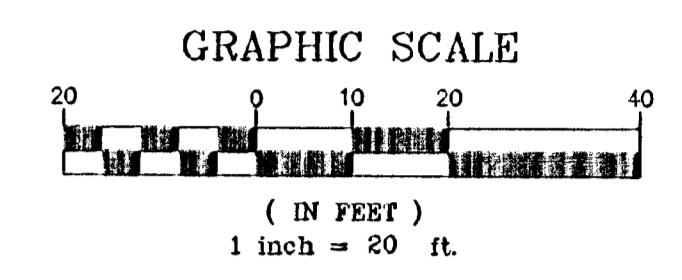
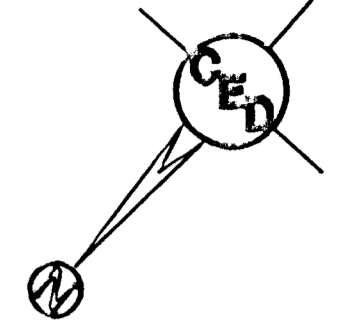


UTILITIES SHOWN REPRESENT THE BEST INFORMATION AVAILABLE FOR DESIGN. ADDITIONAL UTILITIES MAY BE PRESENT ON THIS PROJECT. THE CONTRACTOR SHALL BE RESPONSIBLE FOR DETERMINING THE EXACT LOCATION, DEPTH AND SIZE OF ALL UNDERGROUND UTILITIES PRIOR TO CONSTRUCTION. THE CONTRACTOR SHALL BE LIABLE FOR ANY DAMAGE CAUSED BY THE FAILURE TO DO SO.

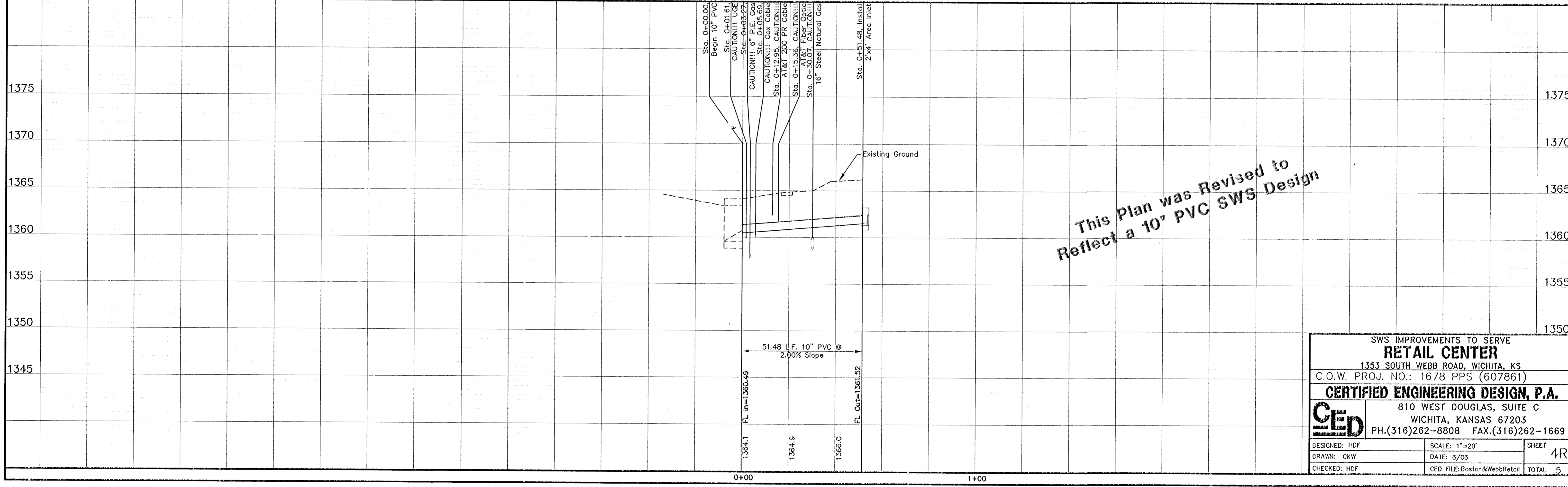


This Plan was Revised to Reflect a 10" PVC SWS Design

- EB = Electric Box
- FH = Fire Hydrant
- GU = Guard Post(Bollard)
- LP = Light Pole
- PM = Pipeline Marker
- SSMH = Sanitary Sewer Manhole
- SBCMH = SBC Telephone Manhole
- SBC Ped = SBC Telephone Pedestal
- WM = Water Meter
- WV = Water Valve
- XMR = Transformer
- #4 = #4 Baughman Rebar Found
- #4 1/2" = #4 1/2" Iron Pipe Found
- > = Chiseled V-Notch Found
- COX = Cox Cable
- SOUTHERN STAR = Southern Star Natural Gas
- KGS = Kansas Gas Service
- WESTAR = Electric Line
- SS = Sanitary Sewer Line
- SS (with dashes) = Stormwater Sewer Line
- AT&T = Telephone Line
- W = Water Line
- Fence Line

SURVEY DISCLAIMER:
 TOPOGRAPHIC SURVEY AND CONTOUR MAP USED IN PREPARING PLANS WAS PROVIDED BY BAUGHMAN COMPANY P.A., 315 ELLIS, WICHITA, KS (316)262-7271. ENGINEER DOES NOT GUARANTEE SURVEY ELEVATIONS FOR ACCURACY. CONTRACTOR SHALL VERIFY ELEVATIONS AND NOTIFY ENGINEER OF ANY DISCREPANCIES.

SWS IMPROVEMENTS



This Plan was Revised to Reflect a 10" PVC SWS Design

SWS IMPROVEMENTS TO SERVE RETAIL CENTER		
1353 SOUTH WEBB ROAD, WICHITA, KS		
C.O.W. PROJ. NO.: 1678 PPS (607861)		
CERTIFIED ENGINEERING DESIGN, P.A.		
810 WEST DOUGLAS, SUITE C WICHITA, KANSAS 67203 PH.(316)262-8808 FAX.(316)262-1669		
DESIGNED: HDF	SCALE: 1"=20'	SHEET
DRAWN: CKW	DATE: 8/06	4R
CHECKED: HDF	CEP FILE: Boston&WebbRetail	TOTAL 5