

STORM WATER SEWER TO SERVE

Buff Car Wash Addition

LOTS 1, BLOCK A

Private Project Number: 1486 PPS (607861)

CITY OF WICHITA, KANSAS

Jim Armour, P.E. Acting City Engineer

November 2004

SCALE:
1" = 20' HORIZONTAL
1" = 5' VERTICAL

Bench Marks:

- Arkansas & 21st Street North - City of Wichita
Bench Mark Disc @ SW Corner of Intersection:
24.50' West of Center Line.
75.50' South of Center Line.
1.50' East of East Face of Walk.
9.50' West of Back of Curb.
64.00' SW of Center Line of Fire Hydrant.
Elev. = 1309.04 NGVD29 (121.64 City Datum)
- Arkansas & 25th Street North - City of Wichita
Bench Mark
40.00 ft. South of center line.
32.00 ft. West of center line.
Elev. = 1315.03 MSL (127.63 City Datum)

Index

- | | |
|--|---|
| Cover/Plan/Profile Sheet | 1 |
| Type "1" Inlet & Sediment Barrier Detail | 2 |
| BMP Erosion Detail | 3 |
| Copy Of Plat | 4 |

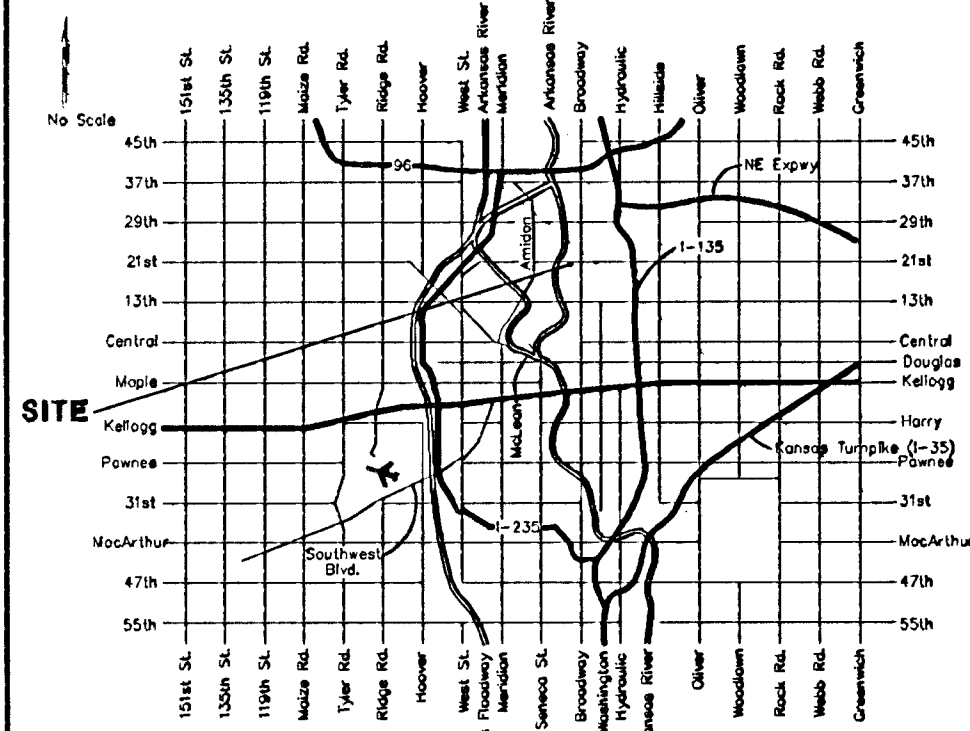
Legal Description

Lot 1, Block A, Buff Car Wash Addition, Wichita, Sedgwick County, Kansas

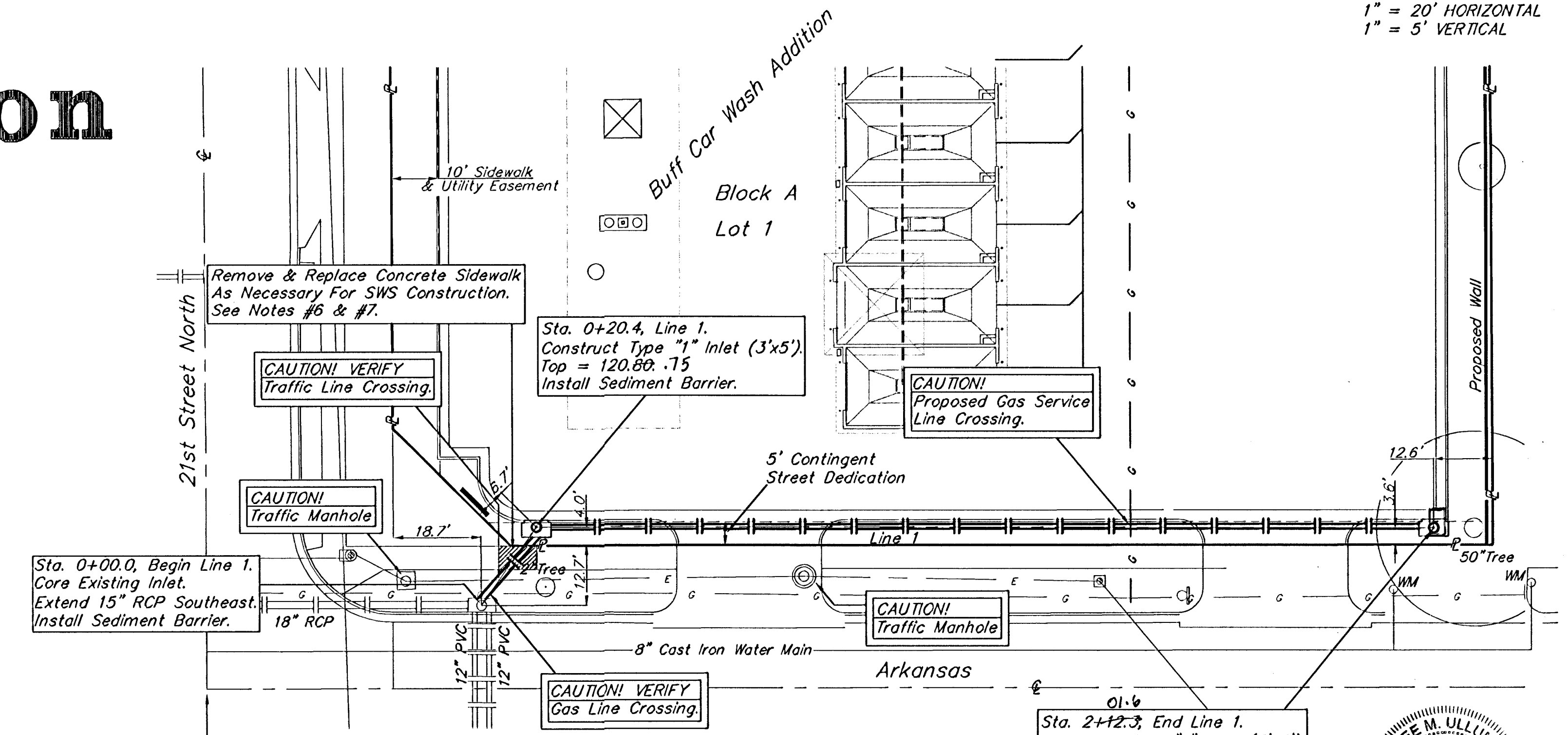
General Notes

- Contractor will be required to provide notice to utility companies a minimum of forty-eight (48) hours prior to any excavation, as follows:
Kansas One-Call 687-2470
The Contractor must notify the following in case of an emergency:
Cox Communications 262-4270
Kansas Gas Service Company 1-888-482-4950
Westar Energy (Electric) 383-8650
Aquila Energy (Gas) 1-800-303-0357
Southwestern Bell Telephone Co. 1-800-286-8313
City of Wichita Water Dept. (Water) 262-6000
City of Wichita Sewer Maint. (SS) 262-6000
City of Wichita Storm Sewer Maint. 268-4090
City of Wichita Traffic Maint. 268-4034
- All disturbed R/W areas not intended for pavement or sidewalk construction shall be seeded with Kansas Premium Fescue Blend at a rate of 8 lb./1000 Sq. Ft., fertilized with a 16-20-6 ratio at a rate of 4 lb./1000 Sq. Ft., and mulched with Prairie Hay at a rate of 92 lb./1000 Sq. Ft. Mulch shall be "patted" with forks or punched into soil to reduce loss due to wind.
- Utility service lines, poles, valve boxes, meters, et cetera are to be adjusted as necessary by others prior to construction unless the plans specifically call for their adjustment by the Contractor or unless the plans specifically identify a utility to be adjusted by its owner during construction. Existing utilities and their location, as shown on the plans represent the best information obtainable for design and shall be field verified. The contractor will be required to work around existing utilities within the right-of-way which do not conflict with proposed construction.
- All storm sewers and appurtenances shall be installed in accordance with the most recent edition of City of Wichita, Kansas Standard Specifications for the Construction of City Projects.
- Cuts made to paved surfaces on public property will be repaired by the City's contractor and charged against the owner/applicant. Unit repair prices are available from the City at 268-4418. A surcharge may be applicable; call 268-4418 for details. Repair costs to be paid prior to release of sewer service if sewer service is affected. Contractor shall obtain permit prior to construction.
- Contractor to remove concrete sidewalk to the nearest construction joint if within 3' of joint. Saw cut if over 3' from joint. Removal and replacement of pavement shall not be paid for directly, but shall be considered incidental to other items in the project.
- Contractor shall not start work on the project until the project inspector is assigned to the project and is present on the site. Contractor shall not start on the project until all necessary bonds and permits have been obtained. Bonds may include but are not limited to Statutory, Performance & Maintenance for areas in public right-of-way and easement. For projects within the City of Wichita contact Tom Mason (268-4574). Any work done without inspection will be required to be uncovered for inspection.
- Rubble from the removal of miscellaneous structures and excess excavation which is to be wasted shall be disposed of on sites to be provided by the Contractor. These sites shall be approved by the Engineer as to suitability, appearance and site location. Locations that, in the opinion of the Engineer, will leave an unsightly appearance will not be approved. All disposal sites must be approved by the Kansas Department of Health and Environment. Material either stockpiled or disposed of in a flood plain would require a Kansas State Board of Agriculture permit. Any material dumped in waters of the United States or wetlands is subject to U.S. Corps. of Engineers permitting regulations. Any material buried or stockpiled beyond approved construction limits would require additional archaeological investigations unless buried in a previously approved borrow location.

Location Map



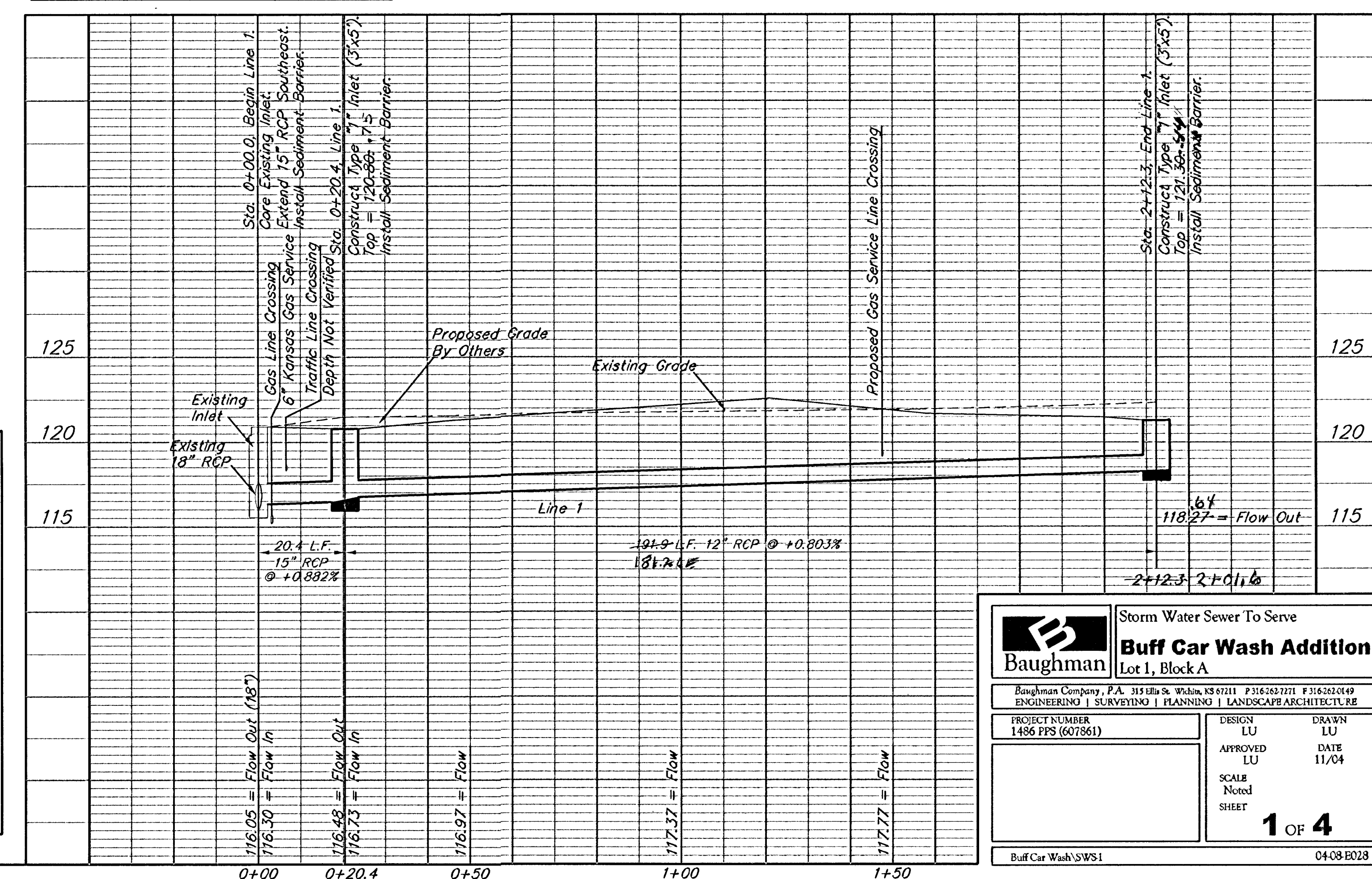
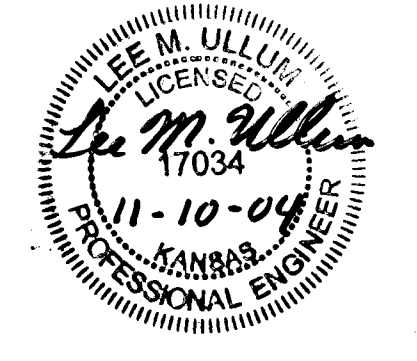
11/30/04
K.E. Miller
Aug 2004



NW Cor., NE 1/4 Sec. 8, Twp. 27-S, R-1-E.

Contractor Shall Follow All Applicable Best Management Practices (BMP) For Erosion Control.

Contractor To Use Extreme Caution When Excavating Near Utility Lines. Contractor To Hand Dig To Expose All Utility Lines Prior To Construction. Verify Depth To Determine Conflict If Any.



APPROVED AS NOTED
BY CITY ENGINEER OF WICHITA

Storm Sewers VRH 11/10/04

NOTE TO CONTRACTORS

Installation, inspection and testing for this project is to be provided by a Licensed Consulting Engineering Firm under contract with the Owner/Developer. Said inspection to be in accordance with the City of Wichita standard construction engineering practices and certified by a Licensed Professional Engineer. No work shall be performed in dedicated easements or public right-of-way by the Contractor without such inspection nor shall any work be commenced without written authorization by the City Engineer. All Construction and Materials shall comply with the City of Wichita Specifications and Standards (on file and available in the City Engineer's Office).

Storm Water Sewer To Serve
Buff Car Wash Addition
Lot 1, Block A

Baughman
Baughman Company, P.A. 315 E. 18th St. Wichita, KS 67211 P 316.263.7211 F 316.263.0149
ENGINEERING | SURVEYING | PLANNING | LANDSCAPE ARCHITECTURE

PROJECT NUMBER
1486 PPS (607861)

DESIGN
LU
APPROVED
LU
SCALE
None
SHEET

DRAWN
LU
DATE
11/04

1 OF 4

Buff Car Wash SWS1 04-08-E028

11/30/04