

TRACT "C"  
THE WATERFRONT ADDITION

STA. 10+00, LINE 1 =  
BEGIN 18" RCP  
N 1695937.33  
E 1682141.01

UTIL. ESMT. BY SEP. WSTR.  
EXIST. 8" SAN. SEW.  
UTIL. ESMT.  
EXIST. 8" WTR.  
MES. NWS.

STA. 13+21.89, LINE 1  
CONST. TYPE 1-A CURB INLET  
L=5', W=3'  
TOP=1380.0  
PROVIDE SEDIMENT BARRIER AND  
INSTALL PAVEMENT UNDERDRAIN PER  
CITY OF WICHITA STANDARD  
SPECIFICATIONS.  
N 1696192.65  
E 1682055.38

**BENCHMARKS**

- BM #1 "X" TOP OF CURB AT SOUTH END OF 4TH ISLAND NORTH OF 13TH ST. NORTH, CL. WATERFRONT PKWY., NEAR SW COR. LOT 1, BLK 1, WATERFRONT 2ND ADD. ELEV=1375.49
- BM #2 BRASS DISC IN TOP OF WEST CURB OF WATERFRONT PKWY., BY INLET SOUTH OF BOX IN RESERVE "D". ELEV=1378.81
- BM #3 BRASS DISC IN TOP OF WEST CURB OF WATERFRONT PKWY., 292' NE OF SE COR. LOT 5, BLK. 1, WATERFRONT ADDITION ELEV=1374.91

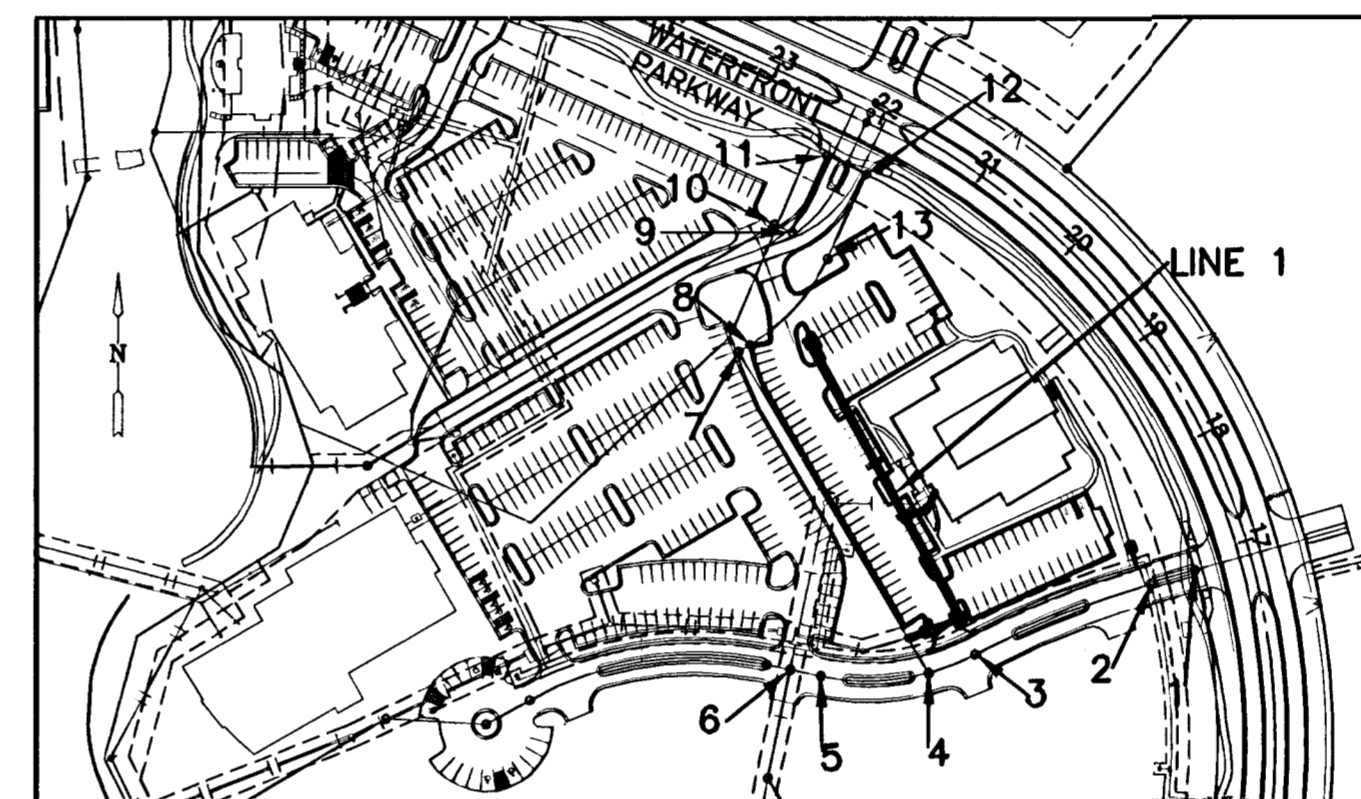
STA. 11+47.33, LINE 1  
CONST. STD.. MANHOLE  
5' DIA.  
TOP=1380.3  
N 1696040.4320  
E 1682139.4859

STA. 10+17.26, LINE 1  
CONST. TYPE 1-A CURB INLET  
L=5', W=3'  
TOP=1379.5  
PROVIDE SEDIMENT BARRIER AND  
INSTALL PAVEMENT UNDERDRAIN PER  
CITY OF WICHITA STANDARD  
SPECIFICATIONS  
N 1695942.90  
E 1682157.29

STA. 10+49.27, LINE 1  
CONST. TYPE 1-A CURB INLET  
L=5', W=3'  
TOP=1379.5  
PROVIDE SEDIMENT BARRIER AND  
INSTALL PAVEMENT UNDERDRAIN PER  
CITY OF WICHITA STANDARD  
SPECIFICATIONS  
N 1695954.04  
E 1682187.22

TRACT "F"  
THE WATERFRONT ADDITION

**PLAN LINE 1**



**LOCATION MAP**

1"=150'

APPROVED AS NOTED  
BY CITY ENGINEER OF WICHITA

STORM SEWERS *[Signature]* 2/28/06

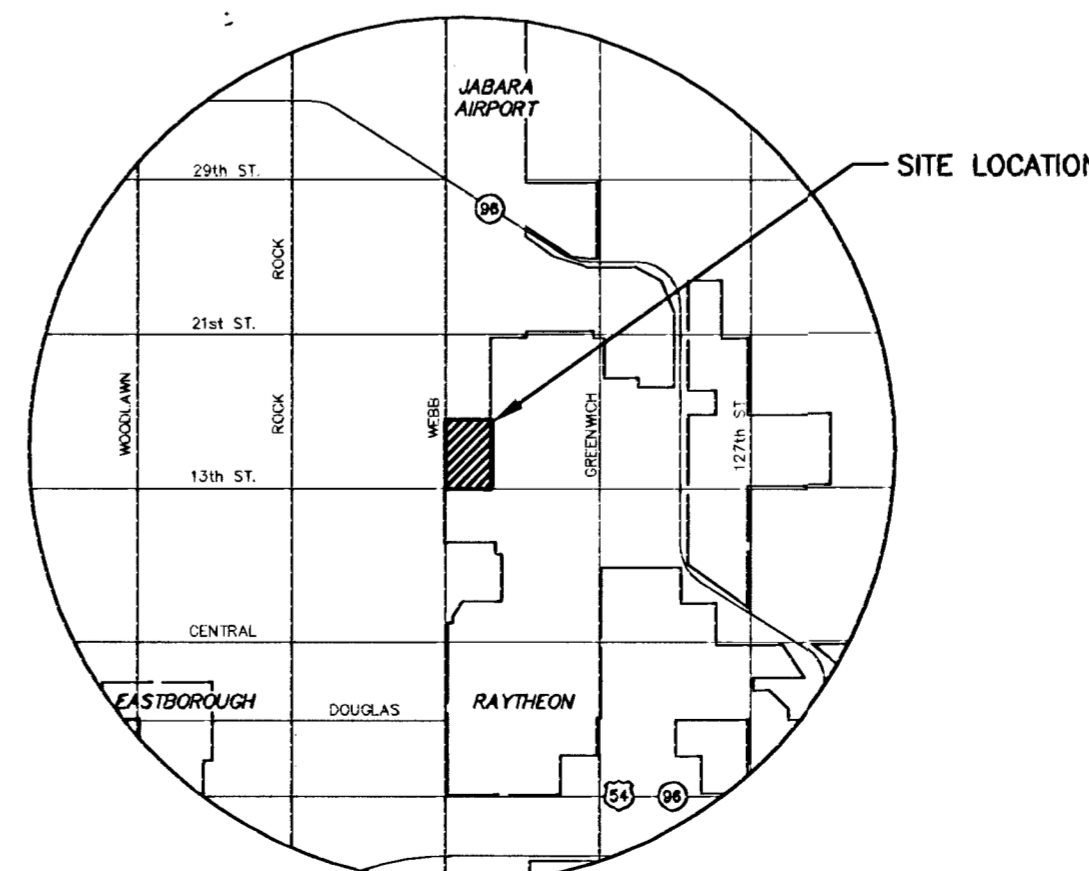
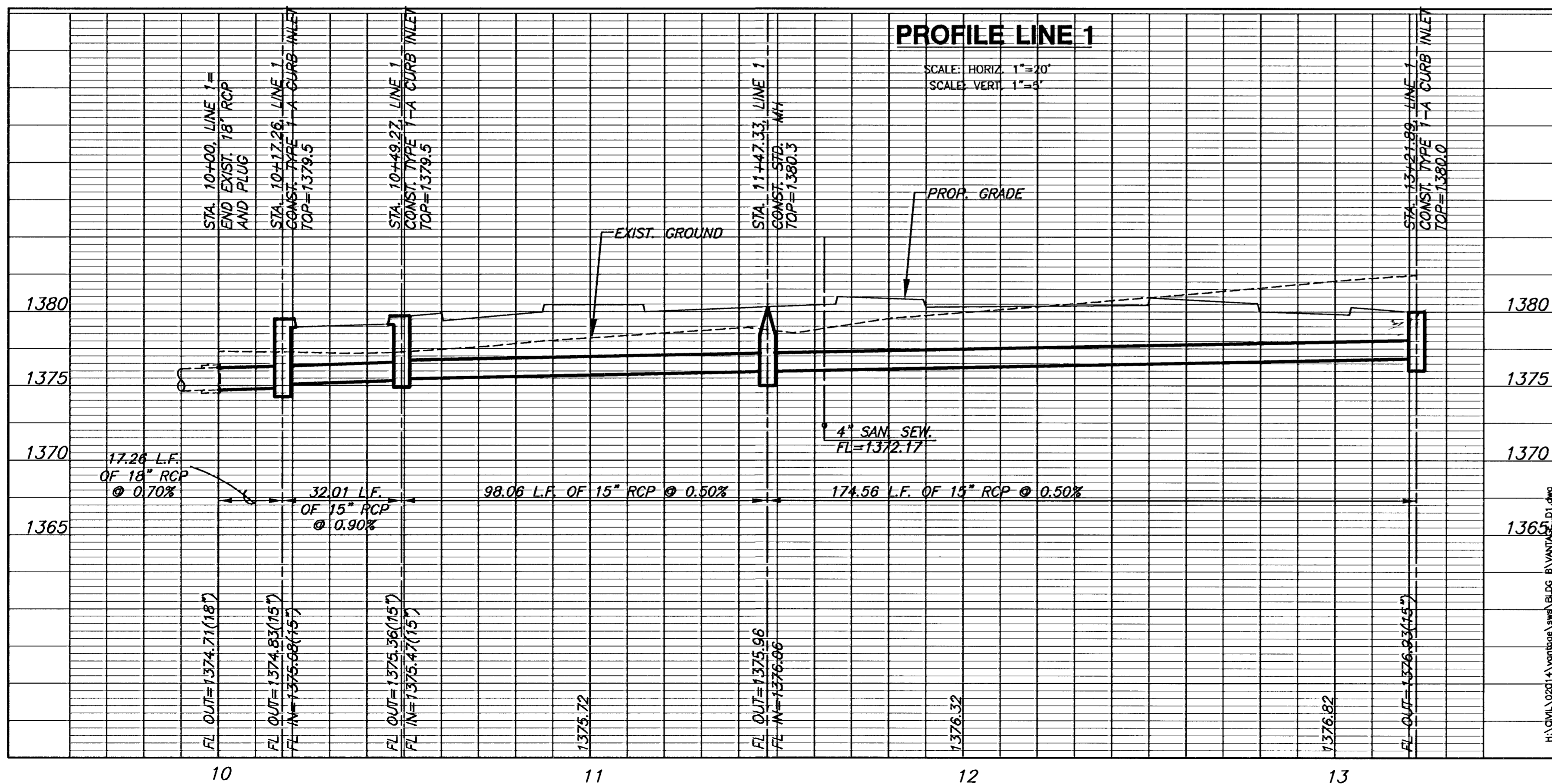
**NOTE TO CONTRACTOR**

INSPECTION AND TESTING FOR THIS PROJECT IS TO BE PROVIDED BY A LICENSED CONSULTING ENGINEERING FIRM UNDER CONTRACT WITH THE OWNER/DEVELOPER. SAID INSPECTION TO BE IN ACCORDANCE WITH THE CITY OF WICHITA STANDARD CONSTRUCTION ENGINEERING PRACTICES AND CERTIFIED BY A LICENSED PROFESSIONAL ENGINEER. NO WORK SHALL BE PERFORMED IN DEDICATED EASEMENTS OR THE PUBLIC RIGHT-OF-WAY BY THE CONTRACTOR WITHOUT SUCH INSPECTION NOR SHALL ANY WORK BE COMMENCED IN DEDICATED EASEMENTS OR PUBLIC RIGHT-OF-WAY WITHOUT WRITTEN AUTHORIZATION BY THE CITY ENGINEER.

**NOTE:**  
ALL LINES TO BE INSTALLED  
BY OTHERS ARE SUBJECT  
TO O.C.I. REVIEW.

**NOTE:**  
CONTRACTOR TO VERIFY  
LOCATION AND ELEVATION OF  
EXIST. UTILITIES PRIOR TO  
CONSTRUCTION.

**AS-BUILT**  
4/24/06  
*[Signature]*  
K.E. Miller  
Speed



**COORDINATE TABLE**

NUMBER	NORTHING	EASTING
1	N 1695994.48	E 1682390.81
2	N 1695984.08	E 1682353.64
3	N 1695922.72	E 1682199.83
4	N 1695906.63	E 1682159.21
5	N 1695903.76	E 1682065.43
6	N 1695909.28	E 1682039.13
7	N 1696185.55	E 1681994.01
8	N 1696191.38	E 1682003.86
9	N 1696288.78	E 1682040.37
10	N 1696295.73	E 1682025.02
11	N 1696355.29	E 1682070.45
12	N 1696339.35	E 1682104.88
13	N 1696266.26	E 1682071.32

**CITY OF WICHITA  
PRIVATE PROJECT  
NO. 1639 PPS (607861)**

**GENERAL NOTES**

- UNLESS SHOWN OR OTHERWISE STATED ON THESE DRAWINGS, MATERIALS AND CONSTRUCTION SHALL BE IN ACCORDANCE WITH THE CITY OF WICHITA STANDARD SPECIFICATIONS.
- THE TOPS OF INLETS AND MANHOLES AS NOTED ON THE PLANS MAY VARY SO AS TO MEET PROPOSED TOP OF CURB ELEVATIONS OR PAVEMENT ELEVATIONS. THE FIELD ENGINEER SHALL LOCATE INLETS AND MANHOLES WITH REFERENCE TO PROPOSED PAVING PLANS OF THE PERTINENT STREETS.
- ALL CONCRETE SHALL BE STANDARD PAVING MIX UNLESS OTHERWISE NOTED.
- THE CONTRACTOR SHALL BE RESPONSIBLE FOR PRESERVING PROPERTY IRONS. THE CONTRACTOR SHALL BE REQUIRED TO RE-ESTABLISH ANY PROPERTY IRONS WHICH ARE DAMAGED OR DESTROYED BY HIS CONSTRUCTION OPERATIONS. SUCH IRONS SHALL BE RE-ESTABLISHED BY A LICENSED LAND SURVEYOR IN ACCORDANCE WITH STATE LAWS.
- TREES TO BE REMOVED ARE MARKED . ALL TREES WHICH IN THE OPINION OF THE FIELD ENGINEER CAN BE SAVED, SHALL BE SAVED.
- CONTRACTOR SHALL NOTIFY UTILITY COMPANIES OF CONSTRUCTION SCHEDULING.
- EXISTING UTILITIES AND THEIR LOCATIONS, AS SHOWN ON THE PLANS REPRESENT THE BEST INFORMATION OBTAINABLE FOR DESIGN. LOCATION INFORMATION HAS BEEN OBTAINED FROM THE VARIOUS COMPANIES AND IS EITHER FROM COMPANY UTILITY DRAWINGS OR COMPANY PROVIDED FIELD LOCATIONS. THE PLAN LOCATIONS SHOWN ARE NOT GUARANTEED. ADDITIONAL EXISTING UTILITIES MAY ALSO BE ENCOUNTERED.
- CONTRACTOR WILL BE REQUIRED TO PROVIDE A MINIMUM ADVANCE NOTICE OF SEVENTY-TWO (72) HOURS TO UTILITY COMPANIES PRIOR TO STARTING ANY EXCAVATION AS FOLLOWS:  
 KANSAS ONE-CALL 800-344-7233 OR 687-2470 (LOCAL WICHITA)  
 THE CONTRACTOR MUST NOTIFY THE FOLLOWING IN CASE OF EMERGENCY:  
 COX COMMUNICATIONS (CABLE) 262-0661  
 WESTAR (ELECTRIC) 261-6512  
 KANSAS GAS SERVICE (GAS) 832-3101  
 SBC (TELEPHONE) 800-870-8390  
 CITY OF WICHITA WATER & SEWER 262-6000  
 AQUILA (GAS) 946-0098
- RUBBLE FROM THE REMOVAL OF MISCELLANEOUS STRUCTURES AND EXCESS EXCAVATION WHICH IS TO BE WASTED SHALL BE DISPOSED OF ON SITES TO BE PROVIDED BY THE CONTRACTOR. THESE SITES SHALL BE APPROVED BY THE ENGINEER AS TO SUITABILITY, APPEARANCE AND SITE LOCATION. LOCATIONS THAT, IN THE OPINION OF THE ENGINEER, WILL LEAVE AN UNSIGHTLY APPEARANCE WILL NOT BE APPROVED. ALL DISPOSAL SITES MUST BE APPROVED BY THE KANSAS DEPARTMENT OF HEALTH AND ENVIRONMENT. MATERIAL EITHER STOCKPILED OR DISPOSED OF IN A FLOOD PLAIN WOULD REQUIRE A KANSAS STATE BOARD OF AGRICULTURE PERMIT. ANY MATERIAL DUMPED IN WATERS OF THE UNITED STATES OR WETLANDS IS SUBJECT TO U.S. CORPS OF ENGINEERS PERMITTING REGULATIONS. ANY MATERIAL BURIED OR STOCKPILED BEYOND APPROVED CONSTRUCTION LIMITS WOULD REQUIRE ADDITIONAL ARCHAEOLOGICAL INVESTIGATIONS UNLESS BURIED IN A PREVIOUSLY APPROVED BORROW LOCATION.
- CONTRACTOR SHALL RESEED AND MULCH ALL DISTURBED AREAS NOT REQUIRED TO BE SODED. COST SHALL BE CONSIDERED SUBSIDIARY TO SITE RESTORATION.

**SPANGENBERG PHILLIPS  
ARCHITECTURE**  
121 N. Mead, Suite 201, Wichita, KS 67202  
TEL: 316.267.4002 FAX: 316.267.1509  
www.spangenbergphillips.com

**LAKESIDE AT THE WATERFRONT  
VANTAGE POINT PROPERTIES  
BUILDING B**

**MKEC**  
ENGINEERING & CONSULTANTS, INC.  
411 N. WEBB ROAD  
WICHITA, KS 67208  
316.844.9600

**SCOTT R. SHUMWAY**  
LICENSED PROFESSIONAL ENGINEER  
KANSAS  
2/28/06

PRICING  
31 JAN 08

STORM WATER  
SEWER PLANS  
**C1.2**