

Private Project Storm Water Sewer
STORM WATER SEWER IMPROVEMENTS
 to serve
WESTLINK CHRISTIAN CHURCH ADDITION
 CITY OF WICHITA, KANSAS

James L. Armour, P.E. City Engineer
 Project Number
 1689 PPS
 O.C.A. Number
 607861

GENERAL NOTES:

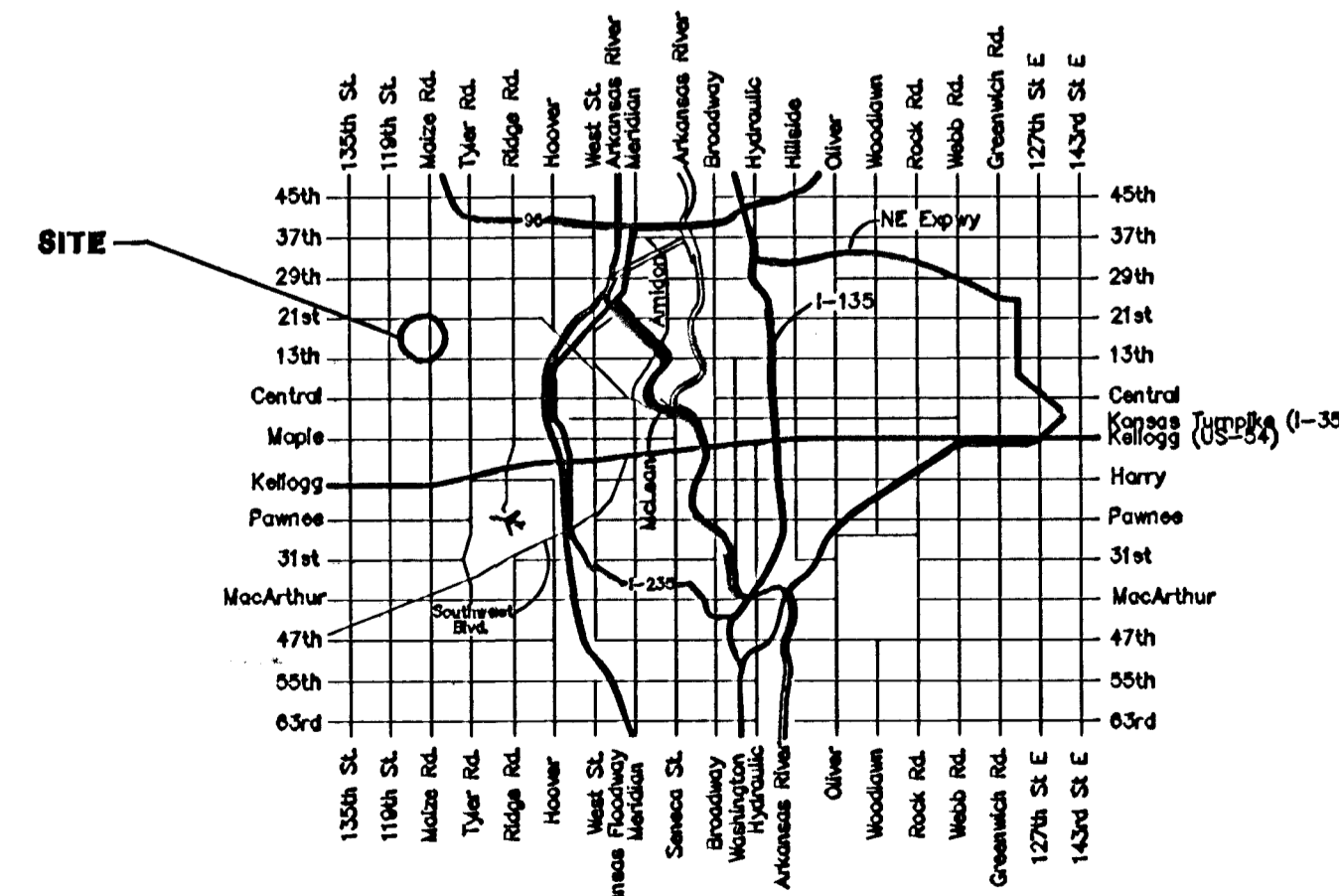
1. Contractor will be required to provide notice to utility companies a minimum of forty-eight (48) hours prior to any excavation, as follows:

Kansas One-Call 687-2470

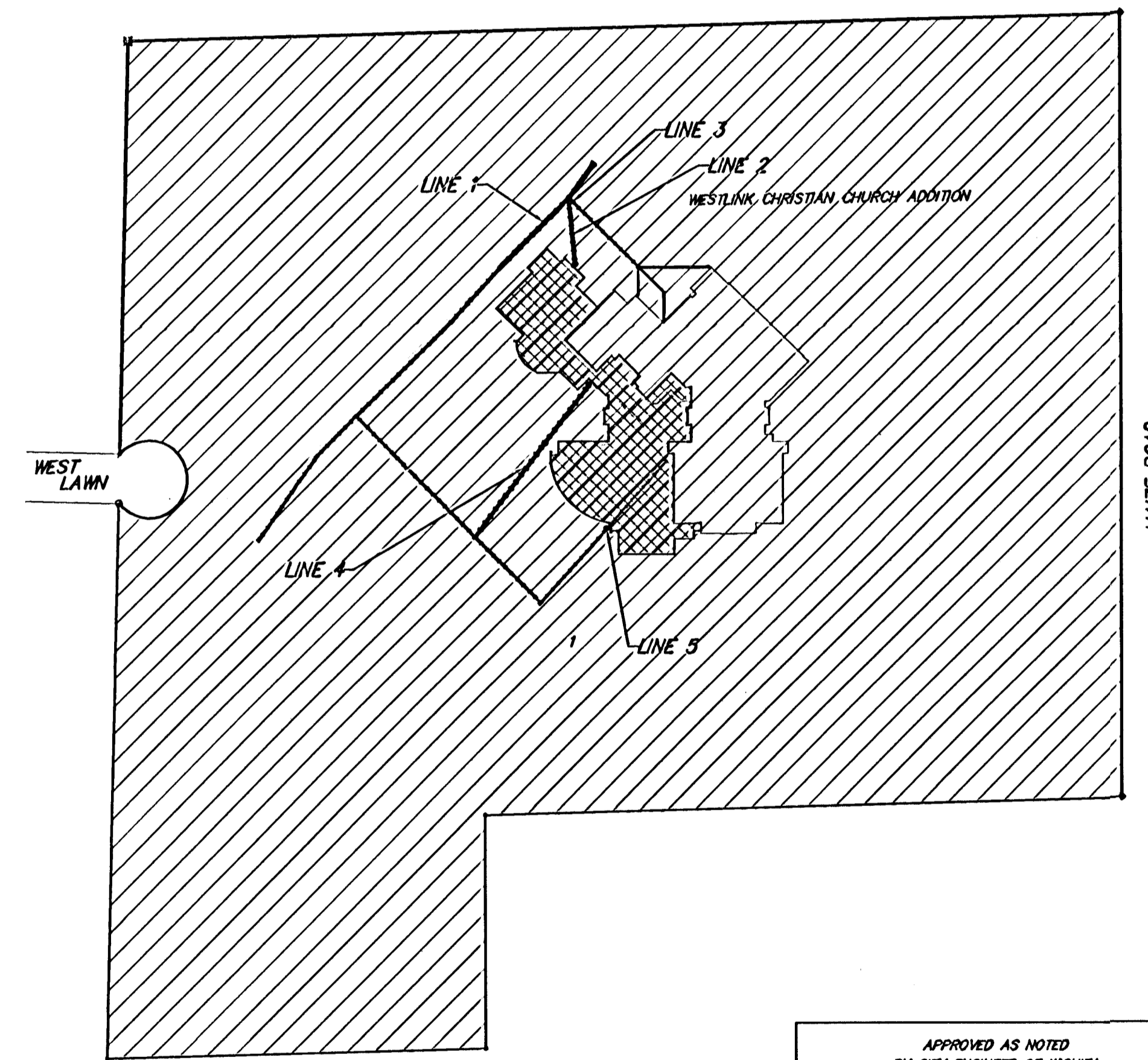
The Contractor must notify the following in case of an emergency:

Cox Communications	262-4270
Kansas Gas Service	1-888-482-4950
Westar Energy	383-8650
Aquila Energy	1-888-482-4950
SBC	268-2245
City of Wichita Water Dept.	268-4563
City of Wichita Sewer Maint.	268-4024
City of Wichita Storm Sewer Maint.	268-4090
City of Wichita Traffic Maint.	268-4034
Conoco Pipeline Co.	1-800-231-2531
Southern Star Pipeline Co.	529-6600
Phillips Pipeline Co.	1-800-768-8230
Jayhawk Pipeline Co.	1-888-542-9575

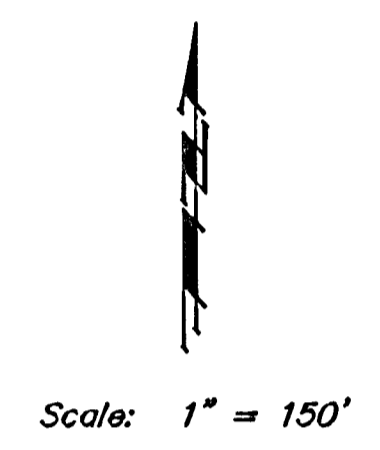
2. Underground utility service lines and overhead utility pole lines are to be adjusted as necessary by others prior to construction unless the plans specifically call for their adjustment by the Contractor or unless the plans specifically identify a utility to be adjusted by its owner during construction. Existing utilities and their location, as shown on the plans, represent the best information obtainable for design. The Contractor will be required to work around existing utilities within the right-of-way which do not conflict with proposed construction.
3. Trees and shrubs in public right-of-way which are in direct conflict with proposed new construction shall be removed by the Contractor with the Engineer's approval. Trees and shrubs which are not in direct conflict with proposed new construction shall be saved and protected from damage.
4. The Contractor shall give all property owners and/or tenants of developed property abutting the construction of this project a minimum of ten (10) days advance notice prior to start of construction.
5. The Contractor shall be responsible for preserving property irons. The Contractor will be required to re-establish any property irons which are damaged or destroyed by his construction operations. Such irons shall be re-established by a licensed land surveyor in accordance with state laws.
6. All excavation & trenching material shall be stockpiled or spread out on site as determined by the Engineer.
7. All existing and proposed erosion control measures including silt fencing, erosion control mat, straw bales, inlet barriers, and const. entrance shall be maintained throughout construction by the contractor and until project is accepted by the City of Wichita. The on-site engineer shall complete weekly reports on the status of erosion control measures. The contractor shall be required to comply with maintenance and/or replacement of erosion control measures as determined by the on-site engineer until project is accepted by City of Wichita. Maintenance and/or replacement of erosion control measures to be paid by L.S. bid item "Site Clearing & Restoration"



Vicinity Map



Benefit District



Benchmarks
 Maize Road and 21st Street North.
 City of Wichita Benchmark Disc on
 the Southeast Corner of Intersection.
 64' East and 99' South of Centerline
 both.
 Elevation = 164.30 (per City record)
 "I" Cut in Centerline Headwall of
 R.C.B.C. East side of Maize Road.
 600' +/- South of 21st Street
 North.
 Elevation = 164.93 (City Datum)

Sheet Index

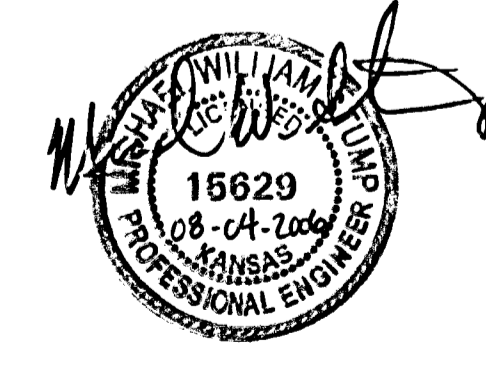
Title Sheet	1
Line 1, 2, 3	2
Line 4, 5	3
Std. Shallow Manhole Detail	4
Special Shallow Manhole Detail	4
Ring & Cover Detail	5
Drainage Plan	5A

APPROVED AS NOTED
 BY CITY ENGINEER OF WICHITA

Sanitary Sewers _____
 Storm Sewers See 08.CC.06
 Driveway Approaches _____
 Water Mains _____
 Paving _____

NOTE TO CONTRACTORS

Installation, inspection and testing for this project is to be provided by a Licensed Consulting Engineering Firm under contract with the Owner/Designer. Said inspection is to be in accordance with the City of Wichita standard construction engineering practices and certified by a Licensed Professional Engineer. No work shall be performed in dedicated easements or public right-of-way by the Contractor without such inspection nor shall any work be commenced without written authorization by the City Engineer. All Construction and Materials shall comply with the City of Wichita Specifications and Standards (as file and available in the City Engineer's Office).



A2 Built 1/19/07 rck