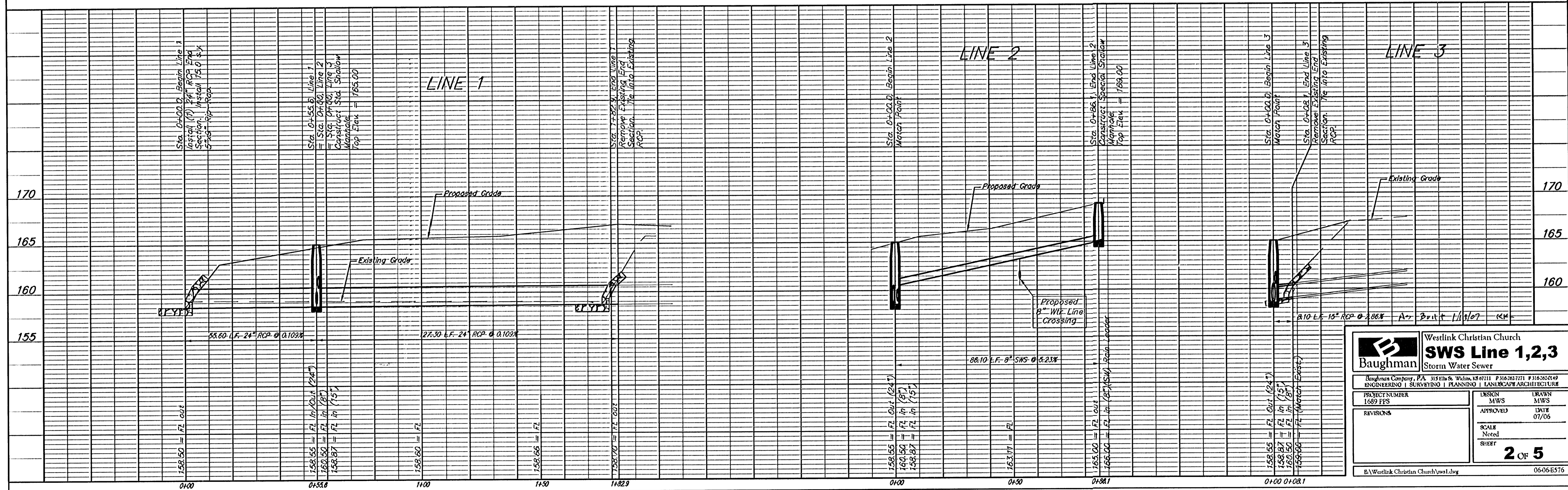
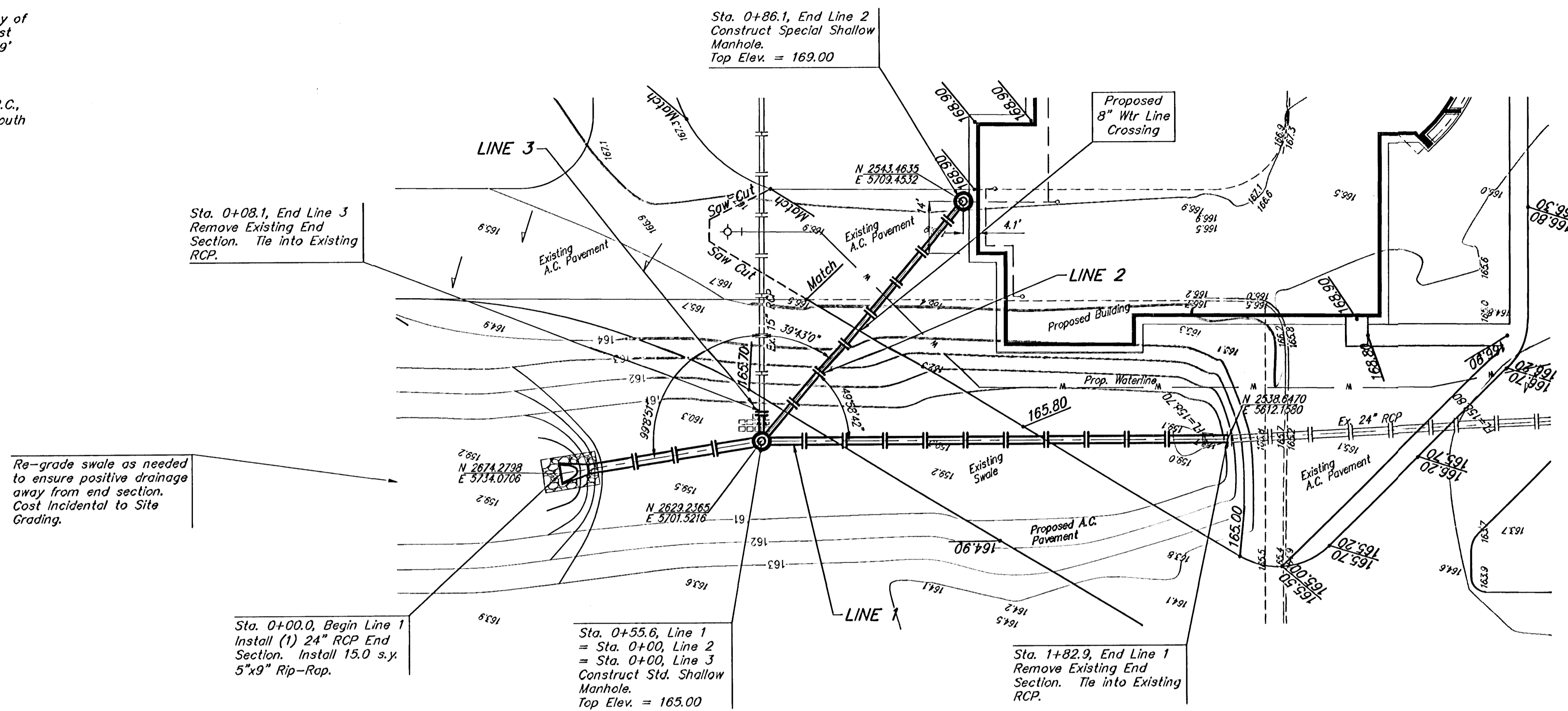
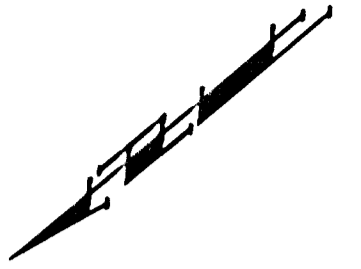


BENCHMARKS:
 Maize Road and 21st Street North, City of
 Wichita Benchmark Disc on the Southeast
 Corner of Intersection. 64' East and 99'
 South of Centerline both.
 Elevation = 164.30 (per City record)

"D" Cut in Centerline Headwall of R.C.B.C.,
 East side of Maize Road. 600' +/- South
 of 21st Street North
 Elevation = 164.93 (City Datum)

SCALE:
 1" = 20' HORIZONTAL
 1" = 5' VERTICAL
 • = IRON



		Westlink Christian Church	
		SWS Line 1,2,3	
Storm Water Sewer		Baughman Company, P.A. 315 Ellis & Weston, KS 67111 P 316.262.7171 F 316.262.0149	
ENGINEERING SURVEYING PLANNING LANDSCAPE ARCHITECTURE		PROJECT NUMBER 1689 PFS	
DESIGN MWS		DRAWN MWS	
APPROVED		DATE 07/06	
SCALE Noted		SHEET 2 OF 5	
REVISIONS		BA/Westlink Christian Church/vsw1.dwg	
		06-06-E576	