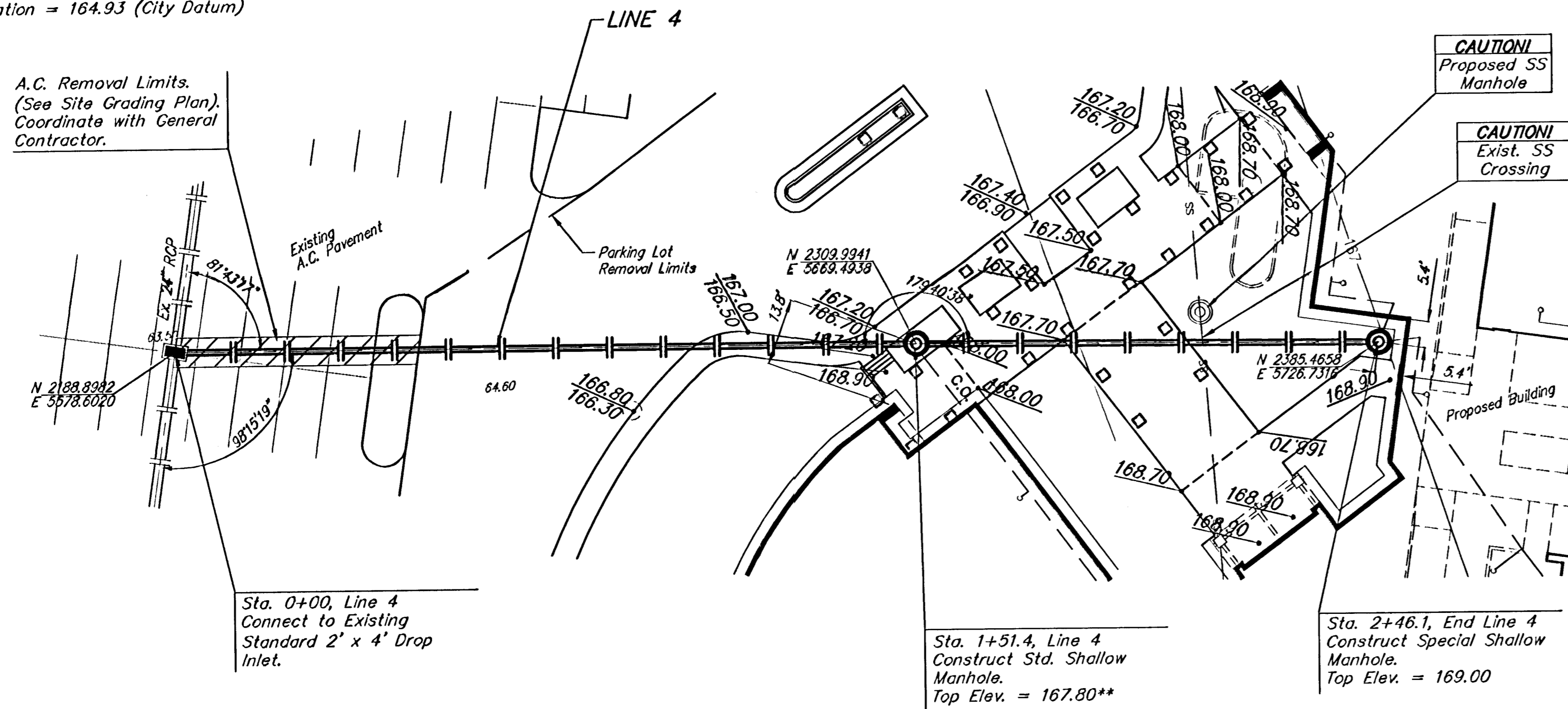


BENCHMARKS:
 Maize Road and 21st Street North. City of
 Wichita Benchmark Disc on the Southeast
 Corner of Intersection. 64' East and 99'
 South of Centerline both.
 Elevation = 164.30 (per City record)

"□" Cut in Centerline Headwall of R.C.B.C.,
 East side of Maize Road. 600' +/- South
 of 21st Street North
 Elevation = 164.93 (City Datum)

A.C. Removal Limits.
 (See Site Grading Plan).
 Coordinate with General
 Contractor.

SCALE:
 1" = 20' HORIZONTAL
 1" = 5' VERTICAL
 • = IRON

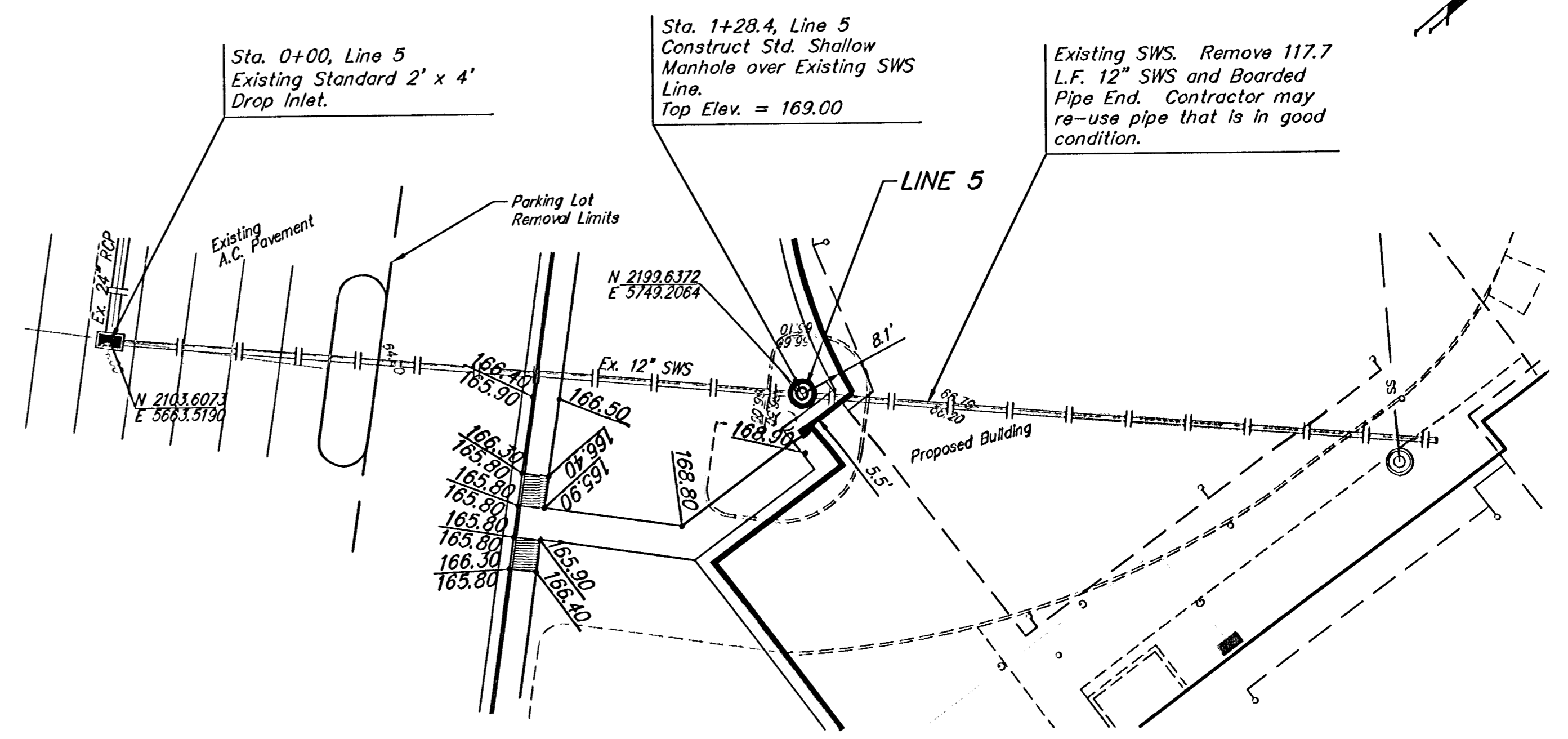


Sta. 0+00, Line 4
 Connect to Existing
 Standard 2' x 4' Drop
 Inlet.

Sta. 1+51.4, Line 4
 Construct Std. Shallow
 Manhole.
 Top Elev. = 167.80**

Sta. 2+46.1, End Line 4
 Construct Special Shallow
 Manhole.
 Top Elev. = 169.00

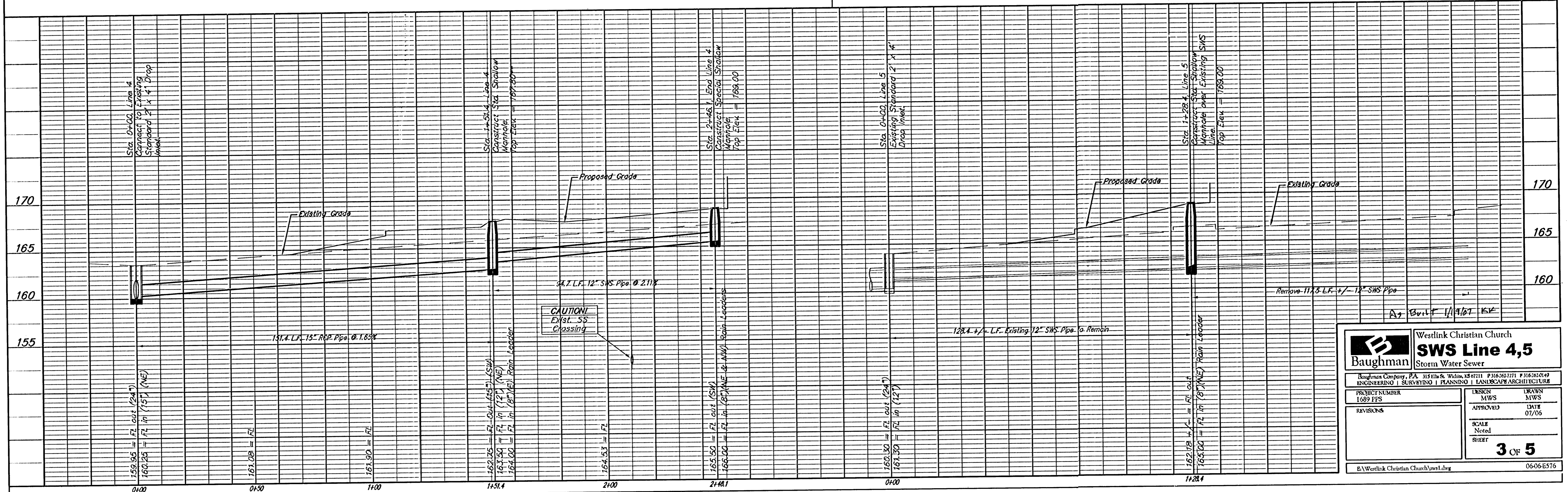
SCALE:
 1" = 20' HORIZONTAL
 1" = 5' VERTICAL
 • = IRON



Sta. 0+00, Line 5
 Existing Standard 2' x 4'
 Drop Inlet.

Sta. 1+28.4, Line 5
 Construct Std. Shallow
 Manhole over Existing SWS
 Line.
 Top Elev. = 169.00

Existing SWS. Remove 117.7
 L.F. 12" SWS and Boarded
 Pipe End. Contractor may
 re-use pipe that is in good
 condition.



		Westlink Christian Church SWS Line 4,5 Storm Water Sewer	
		<small>Baughman Company, P.A. 315 Elm & Wichita, 2557111 P 3162637171 F 3162637149 ENGINEERING SURVEYING PLANNING LANDSCAPE ARCHITECTURE</small>	
PROJECT NUMBER 1689 FFS	DESIGN MWS	DRAWN MWS	DATE 07/06
REVISIONS	APPROVED	SCALE Noted SHEET	3 OF 5
<small>E:\Westlink Christian Church\sws1.dwg</small>			<small>06065576</small>