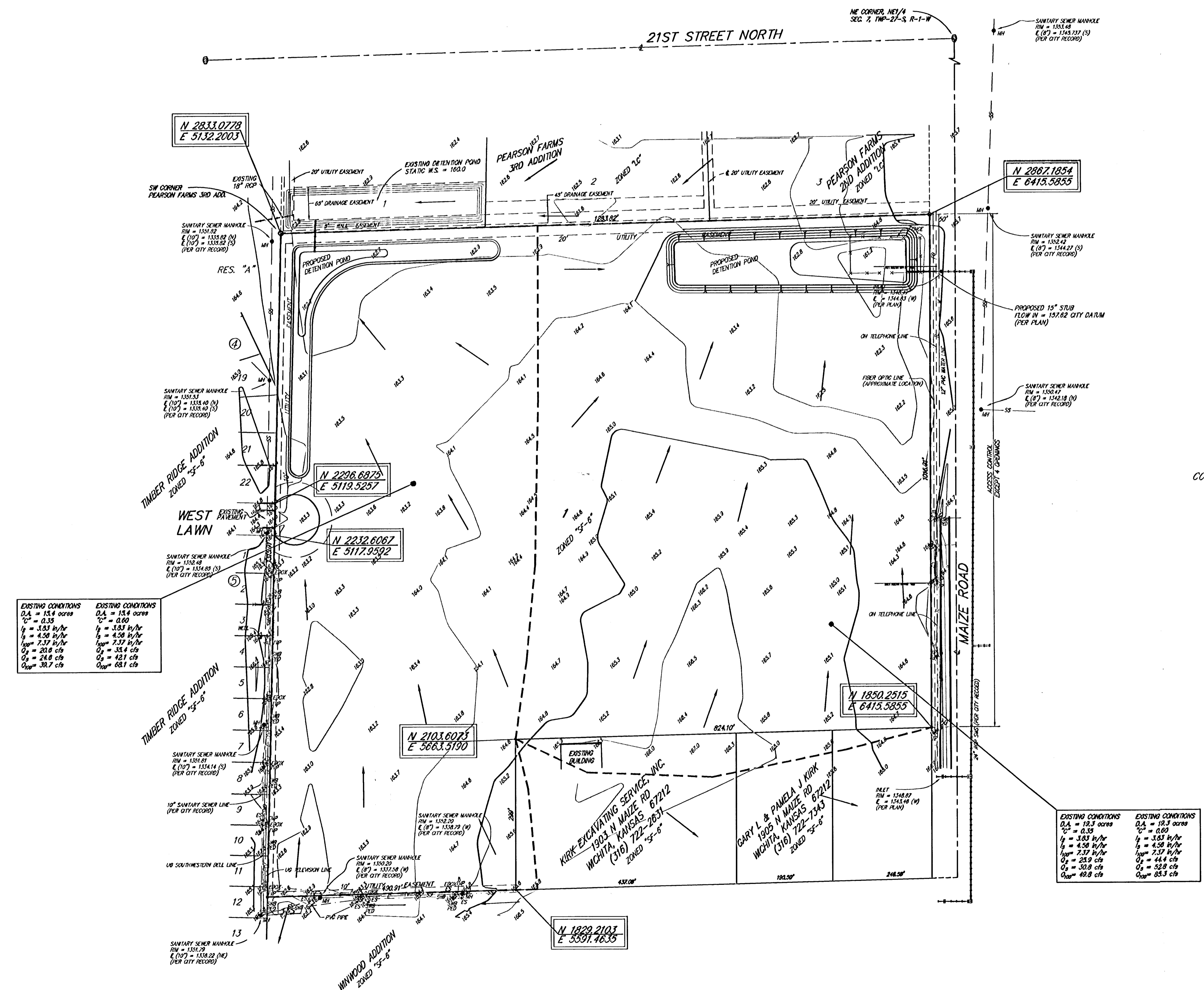


# DRAINAGE CONCEPT

## WESTLINK CHRISTIAN CHURCH ADDITION

### WICHITA, SEDGWICK COUNTY, KANSAS

2447881  
 2102  
 10-10-2017  
 2:11:08 PM  
 20170821



**LEGAL DESCRIPTION:**

THE NORTH HALF OF THE SOUTHEAST QUARTER OF THE NORTHEAST QUARTER OF SECTION 7, TOWNSHIP 27 SOUTH, RANGE 1 WEST OF THE SIXTH PRINCIPAL MERIDIAN, SEDGWICK COUNTY, KANSAS, EXCEPT THE EAST 50 FEET THEREOF FOR STREET, AND EXCEPT THE SOUTH 299.0 FEET OF THE EAST 674.12 FEET THEREOF ALONG WITH

THE SOUTH HALF OF THE NORTHEAST QUARTER OF THE NORTHEAST QUARTER OF SECTION 7, TOWNSHIP 27 SOUTH, RANGE 1 WEST OF THE SIXTH PRINCIPAL MERIDIAN, SEDGWICK COUNTY, KANSAS, EXCEPT THE EAST 50 FEET THEREOF FOR ROAD.

**OWNER:**

WESTLINK CHRISTIAN CHURCH  
 ATRN: LONNELL E. RICHARDSON  
 8404 W. KELLOGG DRIVE  
 WICHITA, KANSAS 67209  
 (316) 722-3921 EXT. 210

**BENCH MARK:**

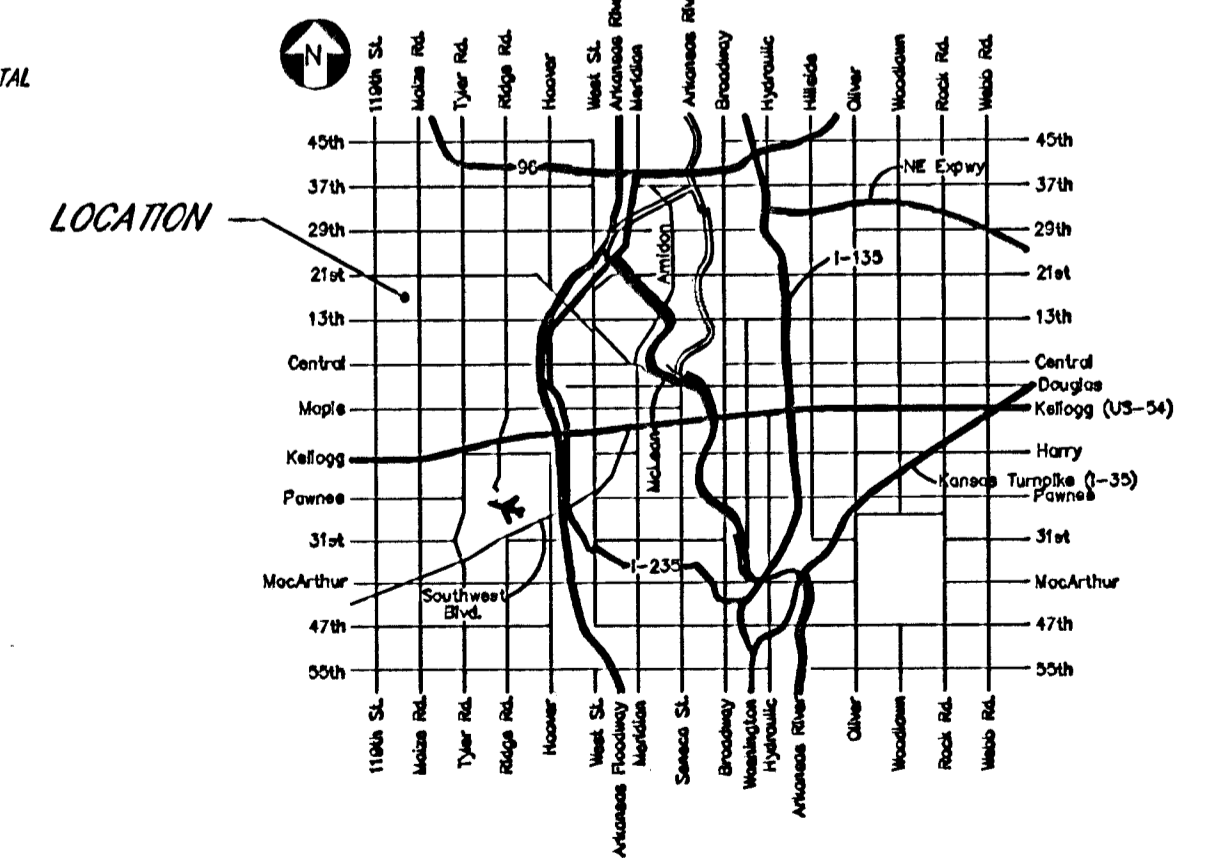
MAIZE RD AND 21ST ST NORTH  
 CITY OF WICHITA BENCH MARK - DISC  
 SE CORNER INTERSECTION:  
 64' EAST AND 99' SOUTH OF CENTER LINE BOTH  
 ELEVATION = 164.30 (PER CITY RECORD)

CONTOUR INTERVAL = 1 FOOT

- LEGEND:**
- = #4 REBAR W/ "BAUGHMAN" CAP (SET)
  - ⊙ = 1/2" IRON IN THIMBLE (FOUND)
  - = 1/2" IRON (FOUND)
  - ⊙ = 3/4" IRON (FOUND)
  - (P) = PLATTED
  - (M) = MEASURED
  - (C-D) = CALCULATED PER DEED
  - ERBX<sup>2</sup> = ELECTRIC BOX
  - ES<sup>2</sup> = ELECTRIC STUB
  - EM<sup>2</sup> = ELECTRIC METER ON POST
  - TP<sup>2</sup> = TELEPHONE POLE
  - TRBX<sup>2</sup> = TELEPHONE BOX
  - SWB<sup>2</sup> = SOUTHWESTERN BELL PEDESTAL
  - SH<sup>2</sup> = SANITARY SEWER MANHOLE

EXISTING CONDITIONS	EXISTING CONDITIONS
D.A. = 13.4 acres	D.A. = 13.4 acres
C <sup>2</sup> = 0.35	C <sup>2</sup> = 0.60
I <sub>p</sub> = 3.83 in/hr	I <sub>p</sub> = 3.83 in/hr
I <sub>g</sub> = 4.50 in/hr	I <sub>g</sub> = 4.50 in/hr
I <sub>avg</sub> = 7.37 in/hr	I <sub>avg</sub> = 7.37 in/hr
Q <sub>2</sub> = 23.0 cfs	Q <sub>2</sub> = 38.4 cfs
Q <sub>5</sub> = 24.0 cfs	Q <sub>5</sub> = 42.1 cfs
Q <sub>avg</sub> = 39.7 cfs	Q <sub>avg</sub> = 68.1 cfs

EXISTING CONDITIONS	EXISTING CONDITIONS
D.A. = 13.3 acres	D.A. = 13.3 acres
C <sup>2</sup> = 0.35	C <sup>2</sup> = 0.60
I <sub>p</sub> = 3.83 in/hr	I <sub>p</sub> = 3.83 in/hr
I <sub>g</sub> = 4.50 in/hr	I <sub>g</sub> = 4.50 in/hr
I <sub>avg</sub> = 7.37 in/hr	I <sub>avg</sub> = 7.37 in/hr
Q <sub>2</sub> = 23.0 cfs	Q <sub>2</sub> = 44.4 cfs
Q <sub>5</sub> = 30.8 cfs	Q <sub>5</sub> = 52.9 cfs
Q <sub>avg</sub> = 40.8 cfs	Q <sub>avg</sub> = 83.3 cfs



**VICINITY MAP**