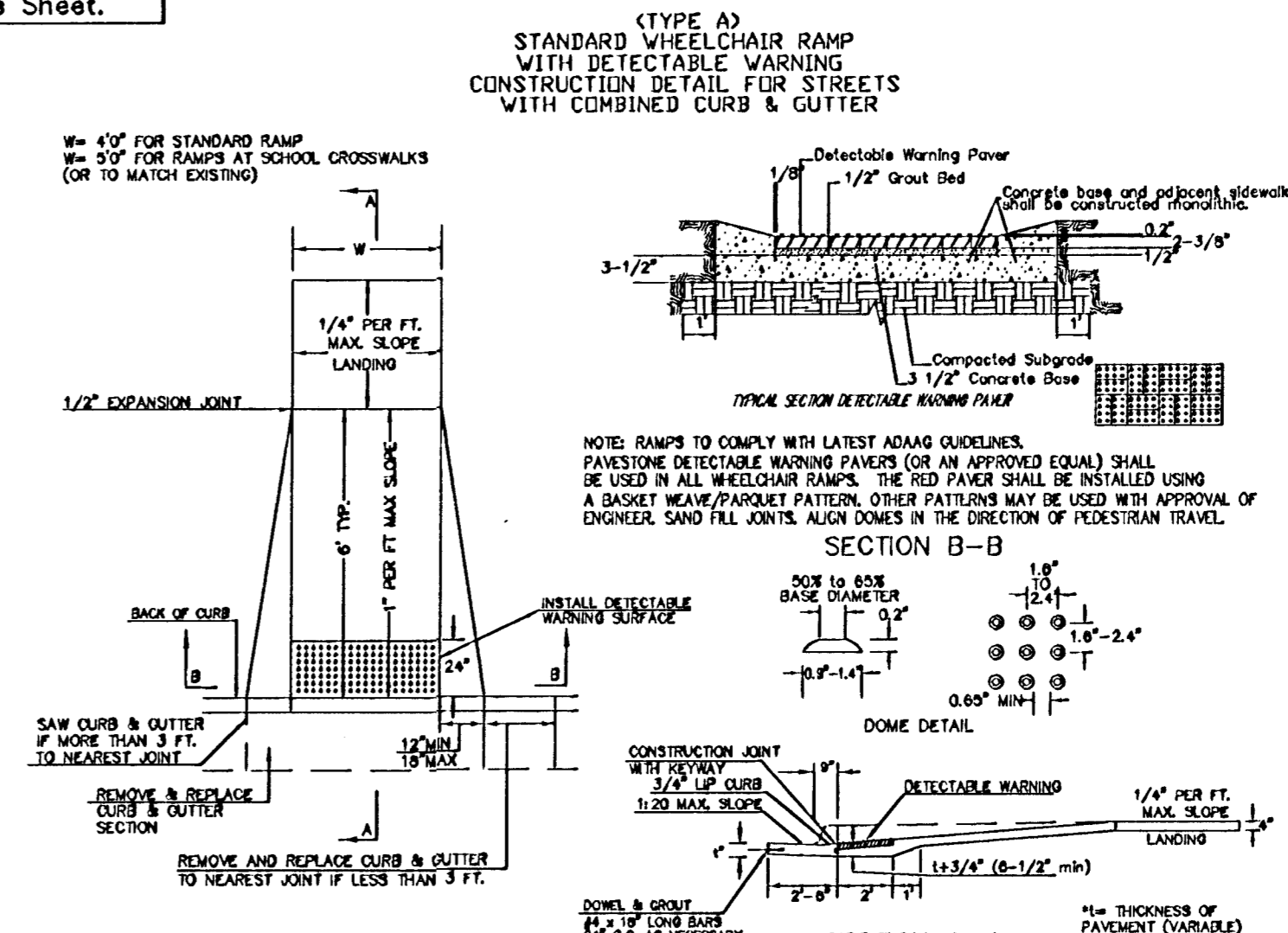


SITE GRADING PLAN

Scale 1" = 20'-0"



BENCHMARK

Railroad Spike in North Face of Power Pole, 9' North of North Curb of 37th St. North and 52' East of East Curb of Sweetbay Extended, of Sweetbay St. and 37th St. North. Elev. = 190.20

LEGAL DESCRIPTION

Lot 3 and the East 5' of Lot 2 of FRANK & JOHNNY'S ADDITION, an Addition to Wichita, Sedgwick County, Kansas.

SITE INFORMATION

Total Area: ±94,438.60 sq. ft. (2.17 acres)
Impervious Area: ±88,781.01 sq. ft. (1.58 acres)
Building Area: 9,825 sq. ft.
Parking Required: 1 per 250 sq. ft. = 40 spaces
Parking Provided: 135 Spaces, Including 4 Accessible Stalls

GRADING NOTES

- Contractor shall be required to provide notice to Kansas One Call at 687-2470 a minimum of two (2) working days prior to any excavation or work adjacent to utilities.
- The Contractor must notify the following in case of an emergency:
Kansas Gas Service (Gas).....1-888-482-4950
Aquila Energy (Gas).....1-800-303-0357
Westar Energy (Electric).....383-8650
Cox Communications (Cablevision).....282-4270
Southwestern Bell (Telephone).....288-2245 or 1-800-288-8313
City of Wichita Water Dept. (Water).....288-4583 or 288-4908
City of Wichita Sewer Maint. (San. Sewer).....288-4024 or 282-8000
City of Wichita Storm Sewer Maint. (Storm Sewer).....288-4030
City of Wich Traffic Maint. (Trac. Control).....288-4034 or 288-4203
Williams Pipeline Co. (Petroleum).....1-800-231-2551
Phillips Pipeline Co. (Petroleum).....523-6600 or 1-800-324-9696
Phillips Pipeline Co. (Petroleum).....1-800-768-8230
- Existing utilities and their locations, as shown on the plans, represent the best information obtainable for design. Location information has been obtained from the various utility companies and is either from company record drawings or company provided field locations. The Contractor will be required to work around existing utilities which do not conflict with proposed construction.
- Traffic affected by the construction on this project shall be handled in accordance with the latest edition of the Local Manual on Uniform Traffic Control Devices.
- The Contractor shall verify all utility locations prior to construction of this project.
- Refer to Landscape Plan for Treatment of All Disturbed Areas.
- Signage and striping shall be installed in accordance with Local City Specifications and Codes. Striping shall be painted markings in conformance with the latest edition of the Standard Specifications for State Road and Bridge Construction by the Kansas Department of Transportation.
- Paved Lot to be constructed with Paving as shown. Subgrade to be compacted to 98% Standard Proctor Density and treated with 4 to 8 percent lime or 14 to 16 percent class "C" fly ash. Refer to pavement details to verify depths and Paving type.
- The Contractor shall notify adjacent landowners prior to proceeding with any construction work on landowner's property.
- Handicap accessible ramps shall be constructed at both drive approach locations. The ramps shall be constructed in accordance with ADA standards and Local City Specifications.
- Cross-Slopes on sidewalks around building shall not exceed 1/4" per foot (or 2%). Notify Landscape Architect of any discrepancies prior to forming of walks.

DATE DRAWN 10-12-05
REVISIONS 03-03-08

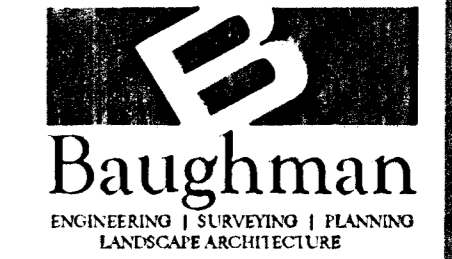
PERMITS ISSUED 03-24-2008
FOR PERMIT

JEFFREY BIEL ASSOCIATES ARCHITECTURE
1325 E. LINN WICHITA, KS 67211
313-262-7271 FAX 313-262-7271
http://www.baughmancompany.com

DATE Copyright 2008
Jeff Baughman Associates

SIENA PLAZA
ROCK ROAD & 37th STREET NORTH
WICHITA, KANSAS

PROJECT NUMBER 05001
SHEET TITLE SITE GRADING PLAN



Baughman Company, P.A.
315 Ellis Wichita, KS 67211
P316-262-7271 F316-262-0149

SHEET NUMBER SG1