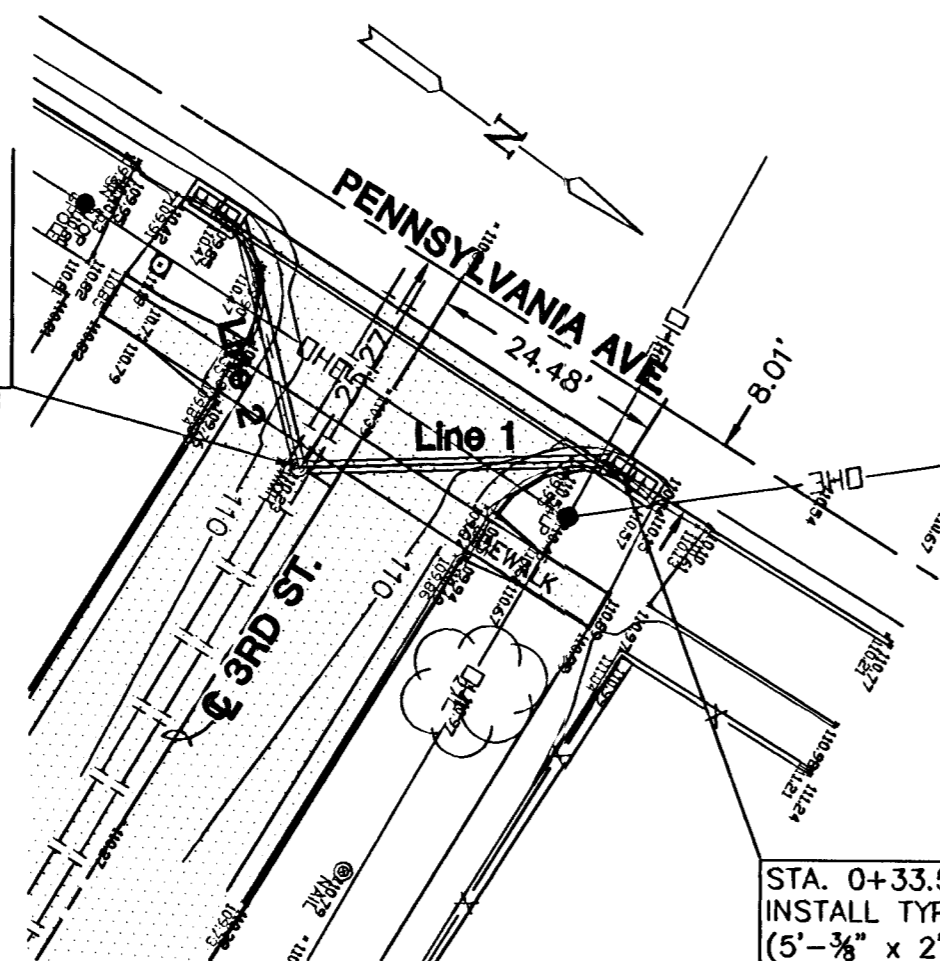


SITE MAP
NTS

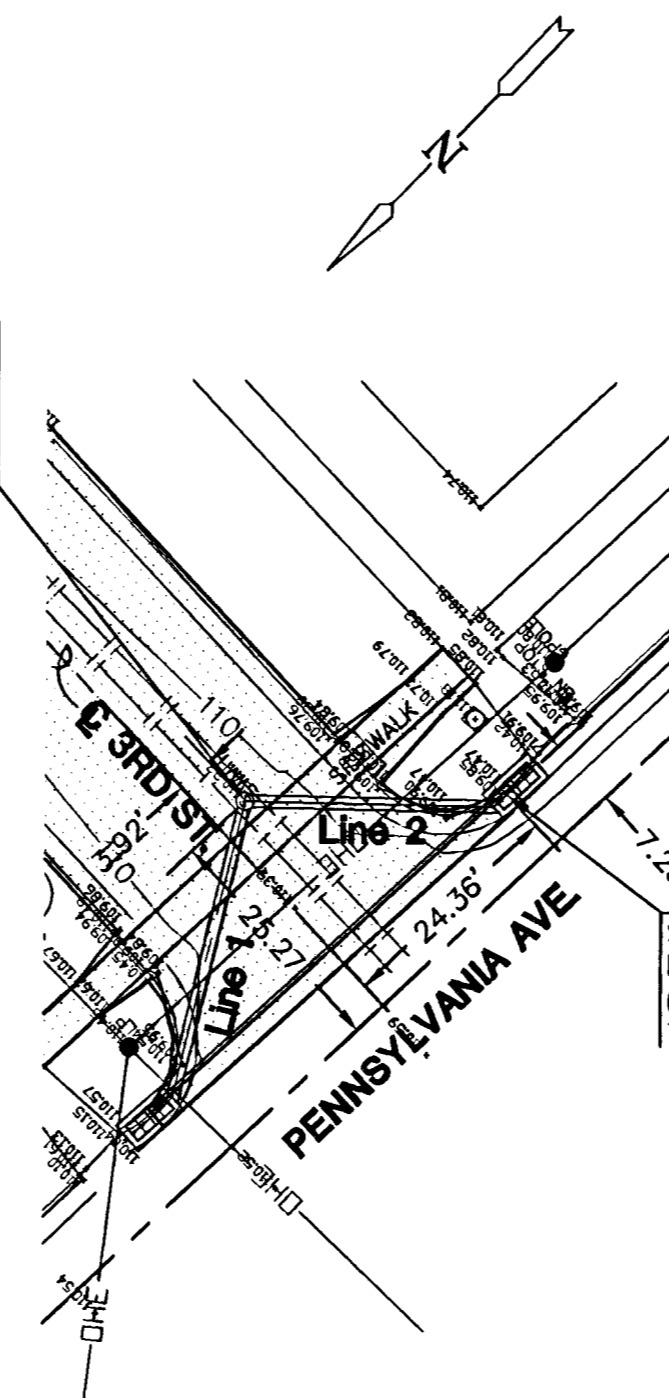
REPLACE SOLID LID W/
GRADED LID
STA. 0+00, LINE 1=
STA. 0+00, LINE 2
EXIST SWS MH
TOP=109.81 AB
FL=106.66 (15" SW)
108.45 (15" NW) AB



PLAN LINE 1
SCALE: 1"=20'

STA. 0+33.57, LINE 1
INSTALL TYPE II CURB INLET
(5'-3/8" x 2'-3/8")
TOP=110.51 AB

STA. 0+00, LINE 2=
STA. 0+00, LINE 1
EXIST SWS MH
TOP=109.81 AB
FL=106.66 (15" SW)
108.00 AB



PLAN LINE 2
SCALE: 1"=20'

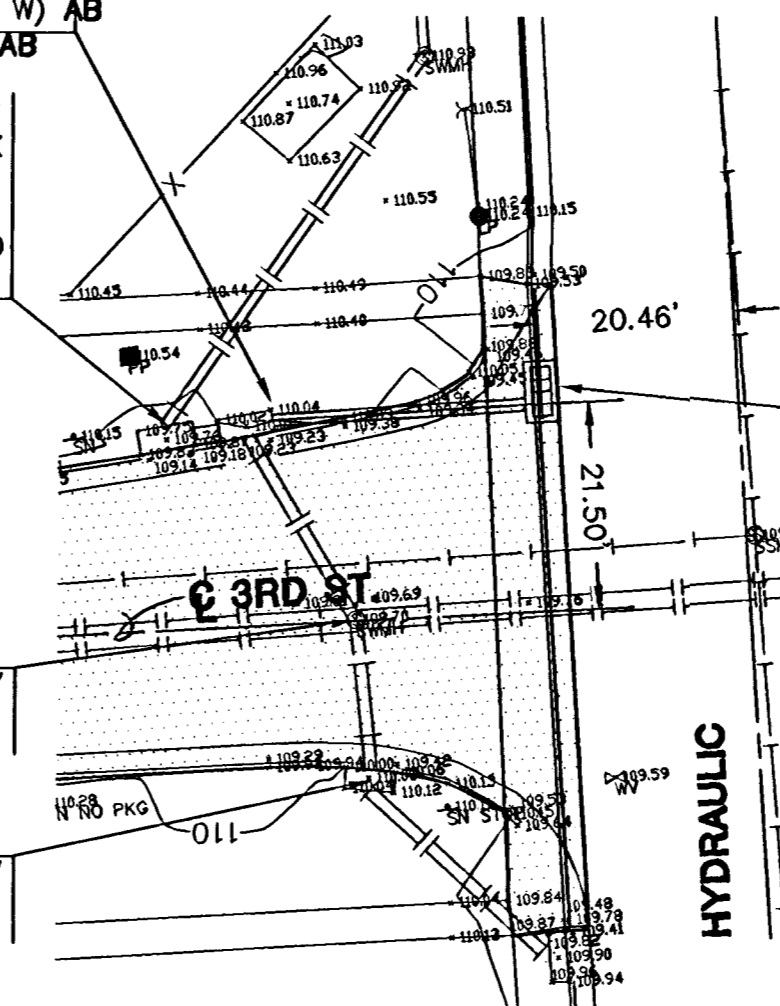
STA. 0+27.75, LINE 2
INSTALL TYPE II CURB INLET
(5'-3/8" x 2'-3/8")
TOP=110.5 AB

REPLACE SOLID LID W/
GRADED LID

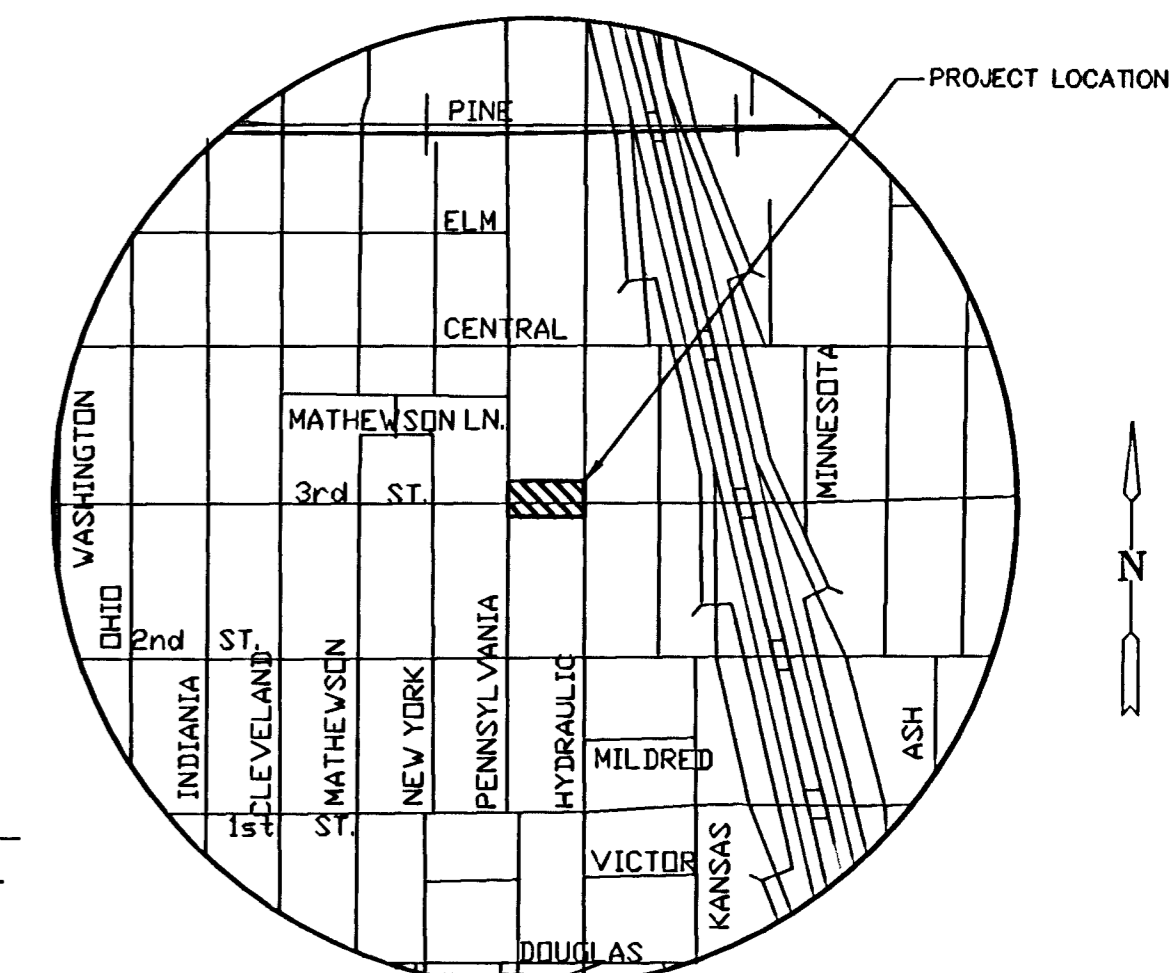
REPLACE SOLID LID W/
GRADED LID

STA. 0+00, LINE 3
EXIST SWS INLET
TOP=110.0+ 110.10 AB
FL=106.01 (15" SE) AB
FL=106.01 (15" W) AB
FL=108.58 (E) AB

CONVERT CURB INLET
TO AREA INLET BRICK
& GROUT CURB
OPENING REPLACE
SOLID LID W/ GRATED
LID



PLAN LINE 3
SCALE: 1"=20'

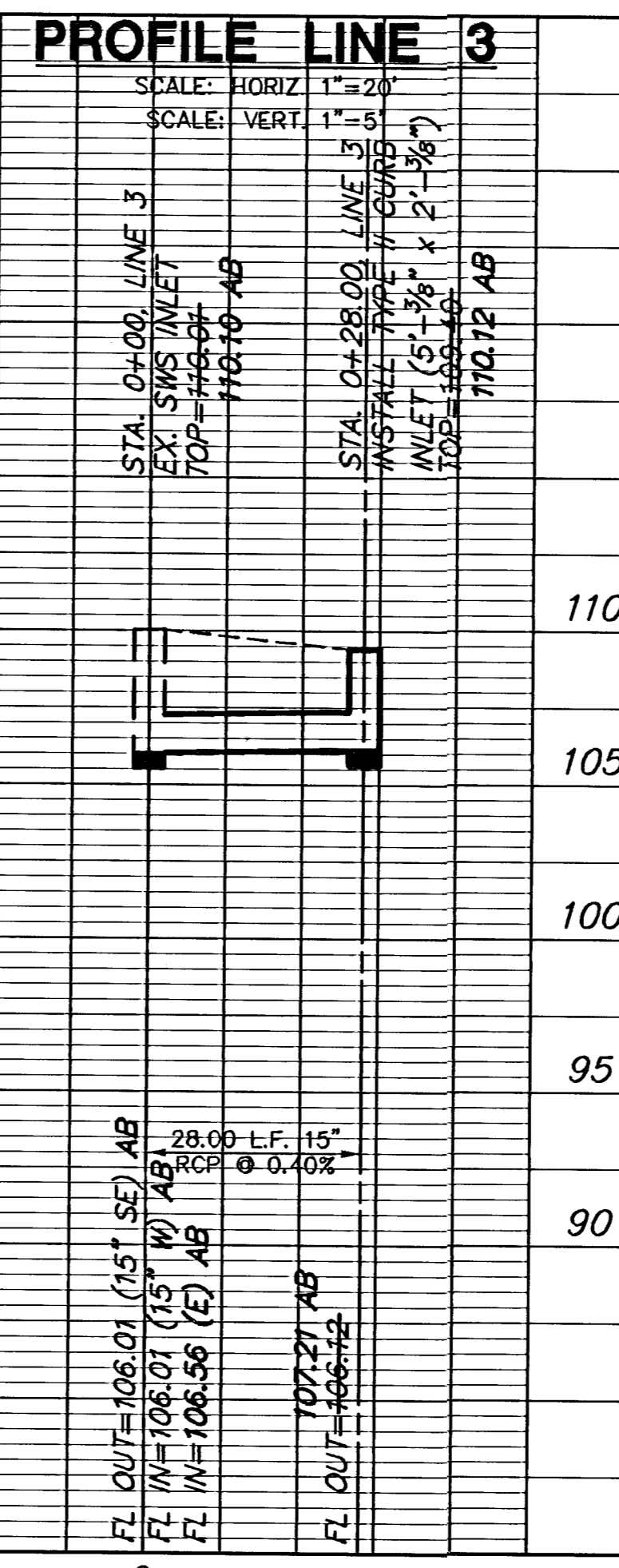
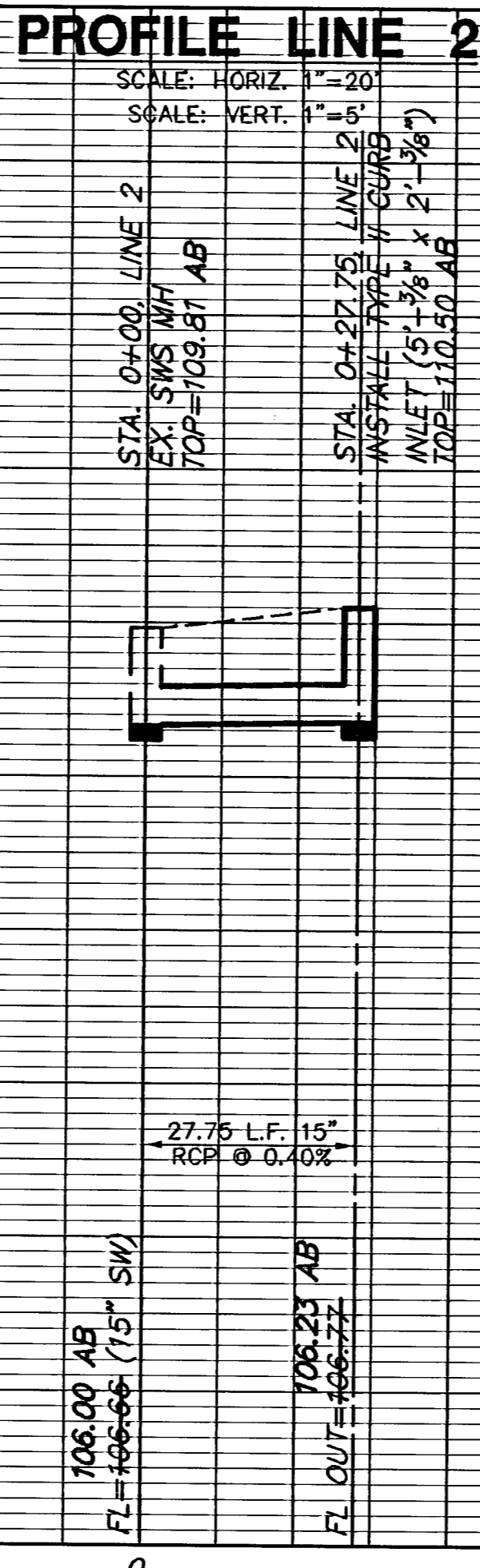
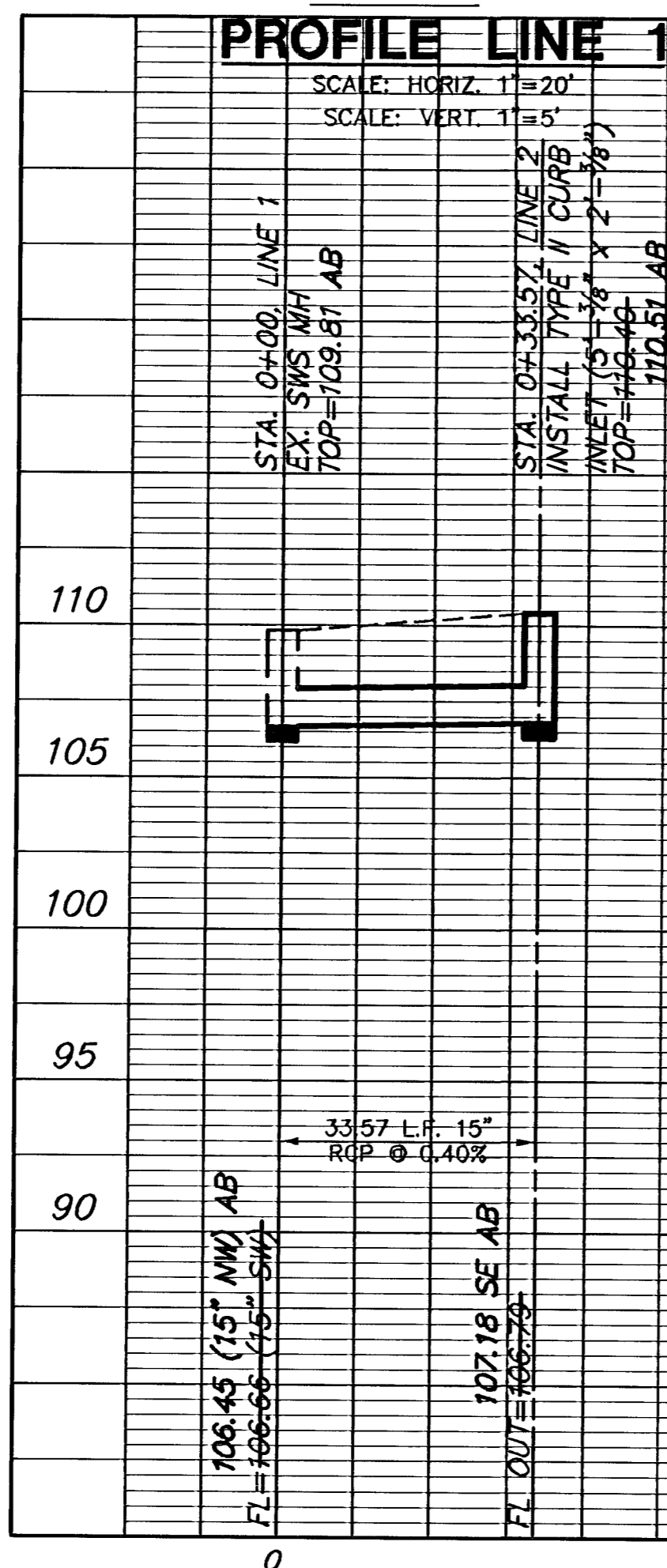


LOCATION MAP

GENERAL NOTES

- UNLESS SHOWN OR OTHERWISE STATED ON THESE DRAWINGS, MATERIALS AND CONSTRUCTION SHALL BE IN ACCORDANCE WITH THE CITY OF WICHITA STANDARD SPECIFICATIONS.
 - THE TOPS OF INLETS AND MANHOLES AS NOTED ON THE PLANS MAY VARY SO AS TO MEET PROPOSED TOP OF CURB ELEVATIONS OR PAVEMENT ELEVATIONS. THE FIELD ENGINEER SHALL LOCATE INLETS AND MANHOLES WITH REFERENCE TO PROPOSED PAVING PLANS OF THE PERTINENT STREETS.
 - ALL CONCRETE SHALL BE STANDARD PAVING MIX UNLESS OTHERWISE NOTED.
 - THE CONTRACTOR SHALL BE RESPONSIBLE FOR PRESERVING PROPERTY IRONS. THE CONTRACTOR SHALL BE REQUIRED TO RE-ESTABLISH ANY PROPERTY IRONS WHICH ARE DAMAGED OR DESTROYED BY HIS CONSTRUCTION OPERATIONS. SUCH IRONS SHALL BE RE-ESTABLISHED BY A LICENSED LAND SURVEYOR IN ACCORDANCE WITH STATE LAWS.
 - TREES TO BE REMOVED ARE MARKED WITH A TREE SYMBOL. ALL TREES WHICH IN THE OPINION OF THE FIELD ENGINEER CAN BE SAVED, SHALL BE SAVED.
 - CONTRACTOR SHALL NOTIFY UTILITY COMPANIES OF CONSTRUCTION SCHEDULING.
 - EXISTING UTILITIES AND THEIR LOCATIONS, AS SHOWN ON THE PLANS REPRESENTS THE BEST INFORMATION OBTAINABLE FOR DESIGN. LOCATION INFORMATION HAS BEEN OBTAINED FROM THE VARIOUS COMPANIES AND IS EITHER FROM COMPANY UTILITY DRAWINGS OR COMPANY PROVIDED FIELD LOCATIONS. THE PLAN LOCATIONS SHOWN ARE NOT GUARANTEED. ADDITIONAL EXISTING UTILITIES MAY ALSO BE ENCOUNTERED.
 - CONTRACTOR WILL BE REQUIRED TO PROVIDE A MINIMUM ADVANCE NOTICE OF SEVENTY-TWO (72) HOURS TO UTILITY COMPANIES TO STARTING ANY EXCAVATION AS FOLLOWS:

KANSAS ONE-CALL 800-344-7233
OR 687-2470 (LOCAL WICHITA)
- THE CONTRACTOR MUST NOTIFY THE FOLLOWING IN CASE OF EMERGENCY:
- | | |
|-------------------------------|--------------|
| COX COMMUNICATIONS (CABLE) | 262-0661 |
| WESTAR (ELECTRIC) | 261-6512 |
| KANSAS GAS SERVICE (GAS) | 832-3101 |
| SBC (TELEPHONE) | 800-870-8390 |
| CITY OF WICHITA WATER & SEWER | 262-6000 |
| AQUILA (GAS) | 946-0096 |
- RUBBLE FROM THE REMOVAL OF MISCELLANEOUS STRUCTURES AND EXCESS EXCAVATION WHICH IS TO BE WASTED SHALL BE DISPOSED OF ON SITES TO BE PROVIDED BY THE CONTRACTOR. THESE SITES SHALL BE APPROVED BY THE ENGINEER AS TO SUITABILITY, APPEARANCE AND SITE LOCATION. LOCATIONS THAT, IN THE OPINION OF THE ENGINEER, WILL LEAVE AN UNSIGHTLY APPEARANCE WILL NOT BE APPROVED. ALL DISPOSAL SITES MUST BE APPROVED BY THE KANSAS DEPARTMENT OF HEALTH AND ENVIRONMENT. MATERIAL EITHER STOCKPILED OR DISPOSED OF IN A FLOOD PLAIN WOULD REQUIRE A KANSAS STATE BOARD OF AGRICULTURE PERMIT. ANY MATERIAL DUMPED IN WATERS OF THE UNITED STATES OR WETLANDS IS SUBJECT TO U.S. CORPS OF ENGINEERS PERMITTING REGULATIONS. ANY MATERIAL BURIED OR STOCKPILED BEYOND APPROVED CONSTRUCTION LIMITS WOULD REQUIRE ADDITIONAL ARCHAEOLOGICAL INVESTIGATIONS UNLESS BURIED IN A PREVIOUSLY APPROVED BORROW LOCATION.
 - CONTRACTOR SHALL RESEED AND MULCH ALL DISTURBED AREAS. COST SHALL BE CONSIDERED SUBSIDIARY TO SITE RESTORATION.
 - EXISTING SIGNS SHALL BE SALVAGED AND DELIVERED TO CITY YARD AT 1801 S. McLEAN. ATTN. TERRY NICHOLAS, 4033.



APPROVED AS NOTED
BY CITY ENGINEER OF WICHITA,

Storm Water SCJ 6/6/06
(Public Works)

Streets PDG 6/6/06
(Public Works)

NOTE TO CONTRACTORS

Public Property:
Inspection and testing for the storm water sewer and streets to be provided by a Licensed Consulting Engineering Firm under contract with the Owner/Developer. Said inspection to be in accordance with the City of Wichita Standard Construction Engineering Practices and certified by a Professional Engineer licensed in the state of Kansas. No work shall be performed in dedicated easements or public rights-of-way by the Contractor without such inspection, nor shall any work be commenced without written authorization by the City Engineer. All construction and materials shall comply with the City of Wichita Specifications and Standards (on file and available in the City Engineer's Office).

BENCHMARKS

BM #1 - COW NE CORNER INTERSECTION OF HYDRAULIC & CENTRAL ON BASE OF TRAFFIC LIGHT.
ELEV.=111.70

NOTE: CONTRACTOR TO VERIFY DEPTH & LOCATION OF EXISTING UTILITIES PRIOR TO CONSTRUCTION.

AS-BUILT JULY 2006



USD 269 WASHINGTON ELEM. SCHOOL
3rd STREET VACATION
PROJECT NAME
PRIVATE STORM WATER SEWER PLAN
1632PPS
SHEET TITLE

MKEC DESIGN BY:	SMD/JFL DRAWN BY:	JTC CHECKED BY:
JANUARY 2005 DATE	05414 JOB NO.	1/2 SHEET/OF

J:\civil\05141\dwg\sws\05414D1.DWG