

STORM WATER SEWER IMPROVEMENTS

to serve

LOTS 29 & 30, COMOTARA INDUSTRIAL PARK, 4TH ADDITION

CITY OF WICHITA, KANSAS

James L. Armour, P.E. City Engineer

Project Number

1701 PPS (607861)

BENCHMARK:

#1 City of Wichita Bench Mark at Webb Road and 37th Street North, Northwest corner of intersection. 53.00 Ft. North of center line and 38.00 Ft. West of center line. Elev. = 1414.92 M.S.L. Elev. = 227.52 City Datum

#2 Railroad Spike Set In The South Face of Power Pole, 80.60' West and 7.13 North of Northwest Corner of Lot 6, Comotara Industrial Park 4th Addition, Wichita, Sedgwick County, Kansas. Elev. = 1424.69 M.S.L. Elev. = 237.29 City Datum

SHEET INDEX

Title Sheet	1
SWS Line 1	2
SWS Lines 1A & 1B	3
SWS Lines 2 & 3	4
SWS Line 4	5
Ditch Grading Plan	6
RC City Manhole Detail	7
Headwall Detail	8
Site Grading Plan	9
Copy of Plat	10
Manhole & Inlet Details	Available On Request
BMP Erosion Details	Available On Request

GENERAL NOTES:

1. Contractor will be required to provide notice to utility companies a minimum of forty-eight (48) hours prior to any excavation, as follows:

Kansas One-Call 687-2470

The Contractor must notify the following in case of an emergency:

Cox Communications 262-4270
 Kansas Gas Service 1-888-482-4950
 Westar Energy 383-8650
 Aquila Energy 1-800-303-0357
 SBC 268-2245
 City of Wichita Water Dept. 268-4563
 City of Wichita Sewer Maint. 268-4024
 City of Wichita Storm Sewer Maint. 268-4090
 City of Wichita Traffic Maint. 268-4034
 Conoco Phillips Pipeline Co. 1-877-267-2290
 Southern Star Pipeline Co. 529-6600
 Kinder-Morgan Pipeline Co. 1-888-844-5658

2. Utility service lines, poles, valve boxes, meters, and etcetera are to be adjusted as necessary by others prior to construction unless the plans specifically call for their adjustment by the Contractor or unless the plans specifically identify a utility to be adjusted by its owner during construction. Existing utilities and their location, as shown on the plans, represent the best information obtainable for design. The Contractor will be required to work around existing utilities within the right-of-way which do not conflict with proposed construction.

3. Rubble from the removal of miscellaneous structures and excess excavation which is to be wasted shall be disposed of on sites to be provided by the Contractor. These sites shall be approved by the Engineer as to suitability, appearance and site location. Locations, in the opinion of the Engineer, that will leave an unsightly appearance will not be approved. All disposal sites must be approved by the Kansas Department of Health and Environment. Material either stockpiled or disposed of in a flood plain would require a Kansas State Board of Agriculture permit. Any material dumped in waters of the United States or wetlands is subject to U.S. Corps. of Engineers permitting regulations. Any material buried or stockpiled beyond approved construction limits would require additional archaeological investigations unless buried in a previously approved borrow location.

4. Trees and shrubs in public right-of-way which are in direct conflict with proposed new construction shall be removed by the Contractor with the Engineer's approval. Trees and shrubs which are not in direct conflict with proposed new construction shall be saved and protected from damage.

5. The Contractor shall give all property owners and/or tenants of developed property abutting the construction of this project a minimum of ten (10) days notice prior to start of construction.

6. The Contractor shall be responsible for preserving property irons. The Contractor will be required to re-establish any property irons which are damaged or destroyed by his construction operations. Such irons shall be re-established by a licensed land surveyor in accordance with state laws.

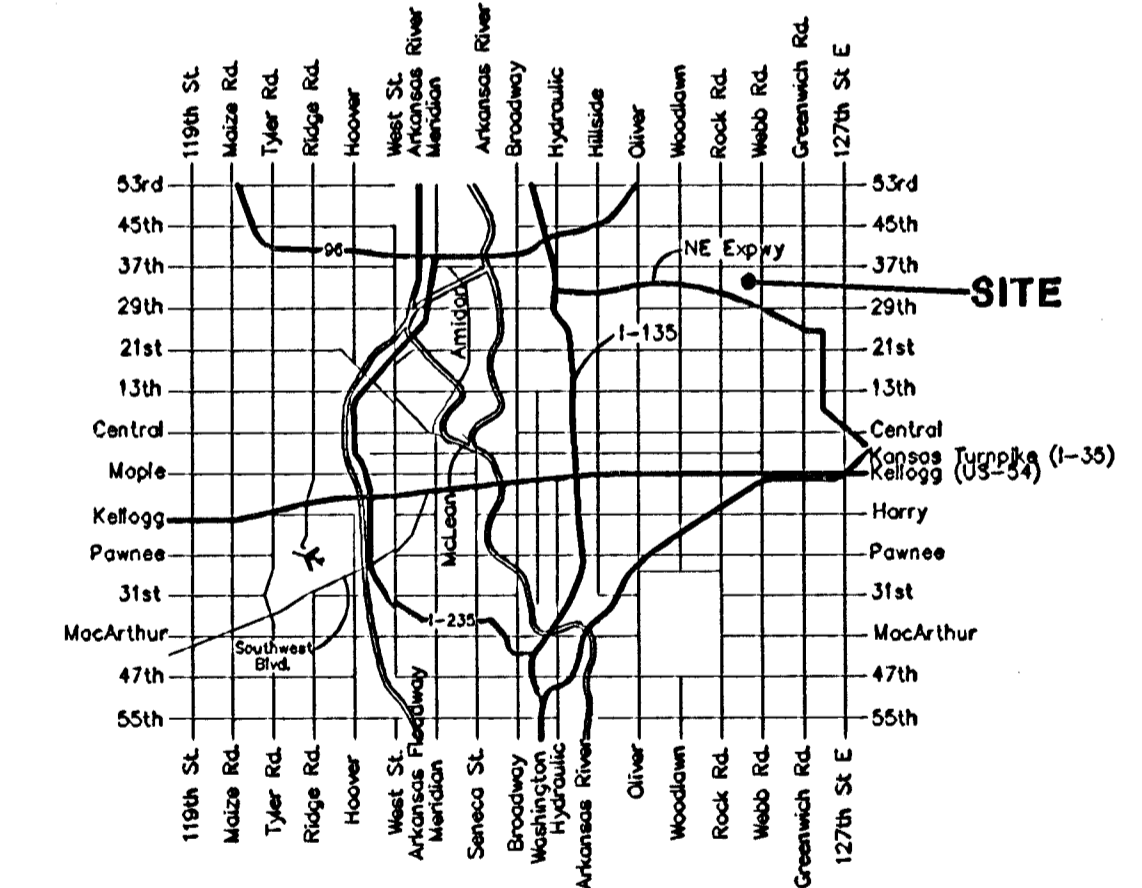
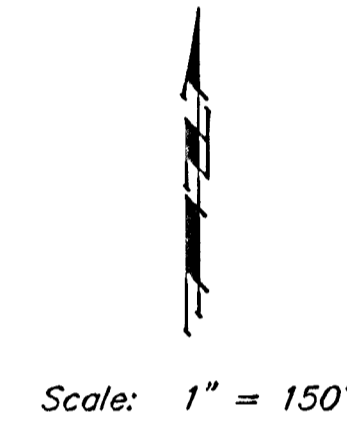
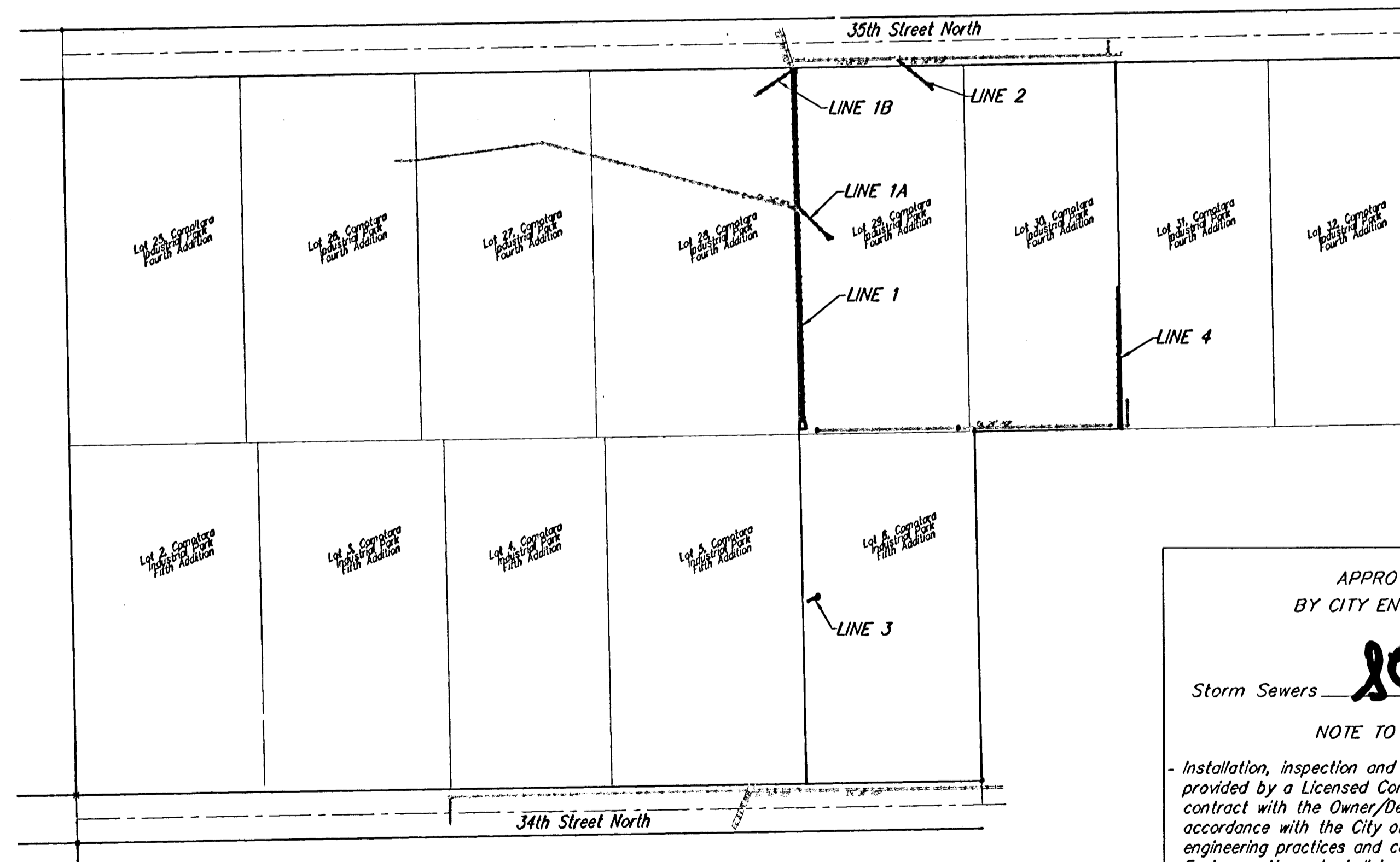
7. Contractor shall grade around exposed manholes at a 1:1 slope. Manholes set lower than existing grade shall have a 9" berm constructed around manhole to prevent infiltration into sanitary sewer system. Cost of dirt, labor, equipment, etc. to be incidental to cost of manhole. Easements shall be graded with the street improvement project as part of the mass grading plan.

8. Contractor shall contact Engineer for availability and location of contractor borrow.

9. All areas disturbed during construction that will not be under proposed pavement shall be seeded at 300 lbs./acre with Rye Grass immediately following construction in that area. Contractor shall prepare ground per City Specifications.

10. The developer for this project is Mark Michaelis and can be reached at (316) 264-1051.

11. All storm sewers and appurtenances shall be installed in accordance with the most recent edition of City of Wichita, Kansas Standard Specifications for the Construction of City Projects.



APPROVED AS NOTED
 BY CITY ENGINEER OF WICHITA

Storm Sewers *JK 9-14-06*

NOTE TO CONTRACTORS

Installation, inspection and testing for this project is to be provided by a Licensed Consulting Engineering Firm under contract with the Owner/Developer. Said inspection to be in accordance with the City of Wichita standard construction engineering practices and certified by a Licensed Professional Engineer. No work shall be performed in dedicated easements or public right-of-way by the Contractor without such inspection nor shall any work be commenced without written authorization by the City Engineer. All Construction and Materials shall comply with the City of Wichita Specifications and Standards (on file and available in the City Engineer's Office).

Vicinity Map



As Built 12/1/06 K.K.



Baughman Company, P.A. 315 Ella St. Wichita, KS 67211 P 316-262-7271 F 316-262-0145
 ENGINEERING | SURVEYING | PLANNING | LANDSCAPE ARCHITECTURE

As Built SWS to serve Comotara Ind. Park 4th
1701 PPS