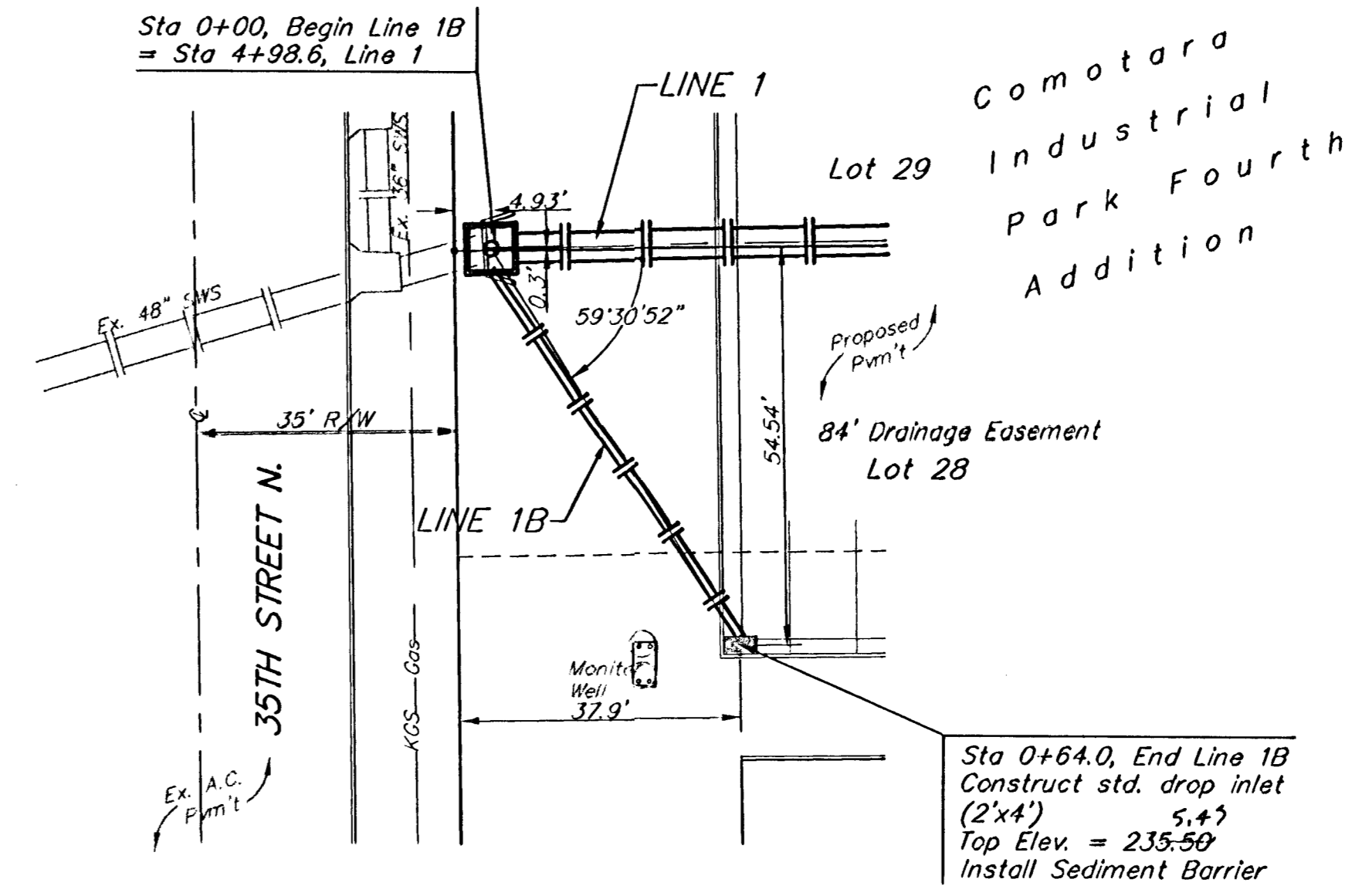
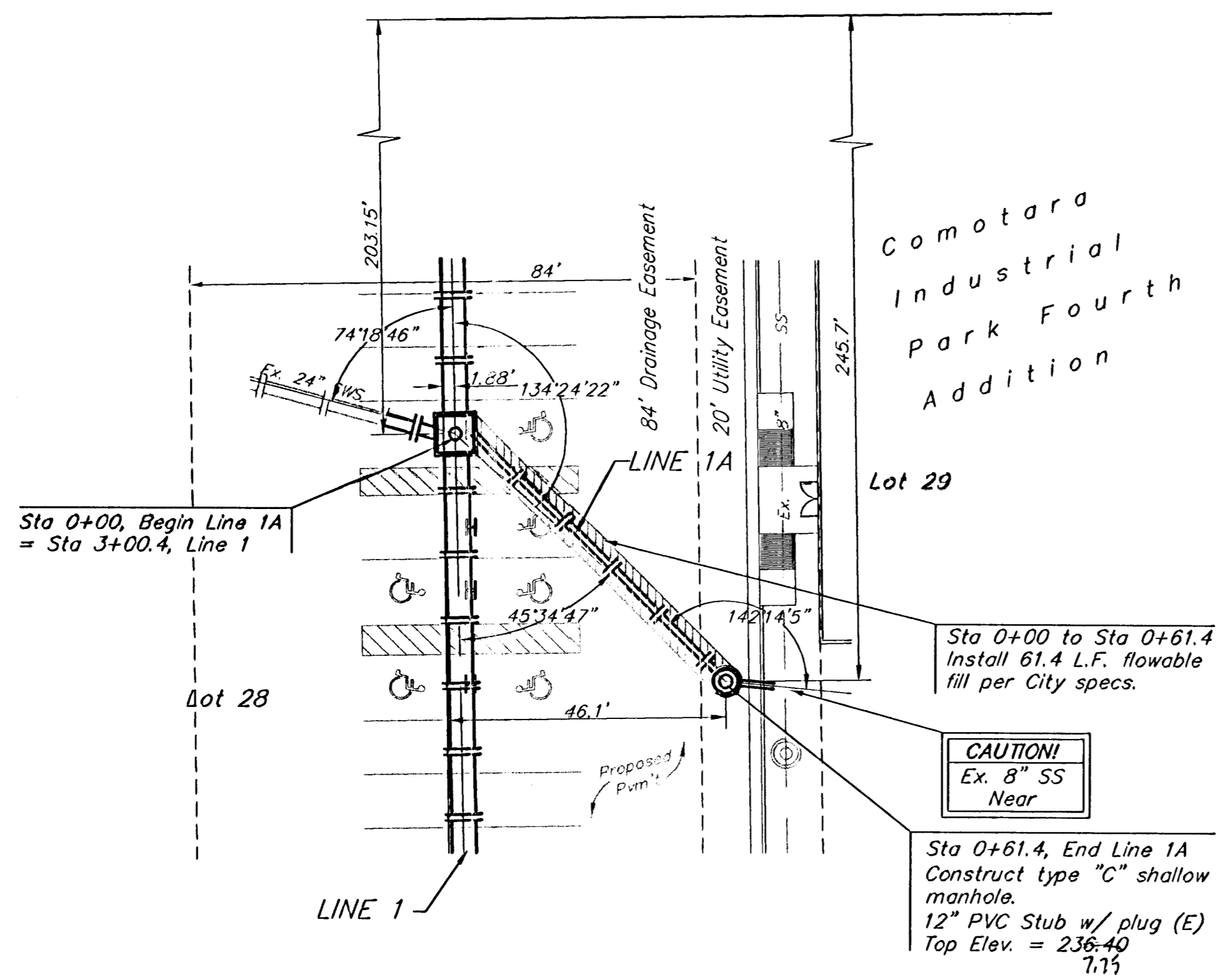


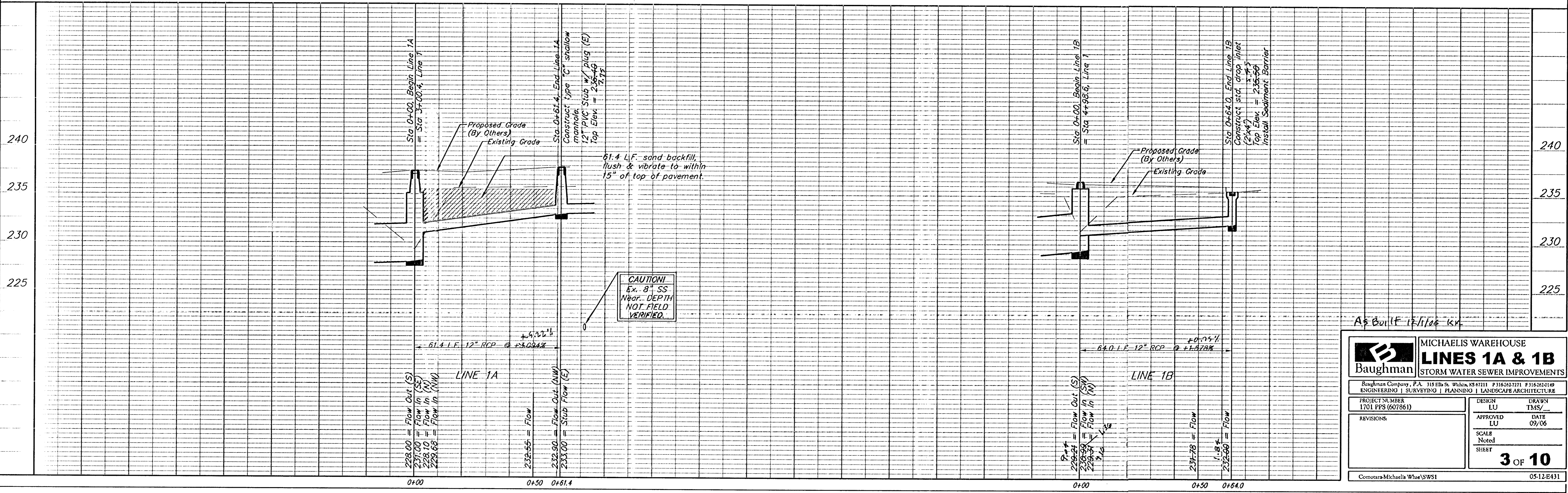
BENCHMARK:

#1 City of Wichita Bench Mark at Webb Road and 37th Street North, Northwest corner of intersection, 53.00 Ft. North of center line and 38.00 Ft. West of center line.
Elev. = 1414.92 M.S.L.
Elev. = 227.52 City Datum

#2 Railroad Spike Set In The South Face of Power Pole, 80.60' West and 7.13 North of Northwest Corner of Lot 6, Comotara Industrial Park 4th Addition, Wichita, Sedgwick County, Kansas.
Elev. = 1424.69 M.S.L.
Elev. = 237.29 City Datum



Scale: 1" = 20' Horizontal
1" = 5' Vertical
• = Iron



A5 BUILT 12/1/14 KS

Baughman		MICHAELIS WAREHOUSE	
		LINES 1A & 1B	
STORM WATER SEWER IMPROVEMENTS			
Baughman Company, P.A. 315 Ellis St. Wichita, KS 67211 F316543771 F316543219			
ENGINEERING SURVEYING PLANNING LANDSCAPE ARCHITECTURE			
PROJECT NUMBER 1701 PPS (607861)	DESIGN LU	DRAWN TMS/	
REVISIONS:	APPROVED LU	DATE 09/06	
	SCALE Noted		
			3 OF 10
Comotara-Michaelis Wise/SWS1		05-12-E431	