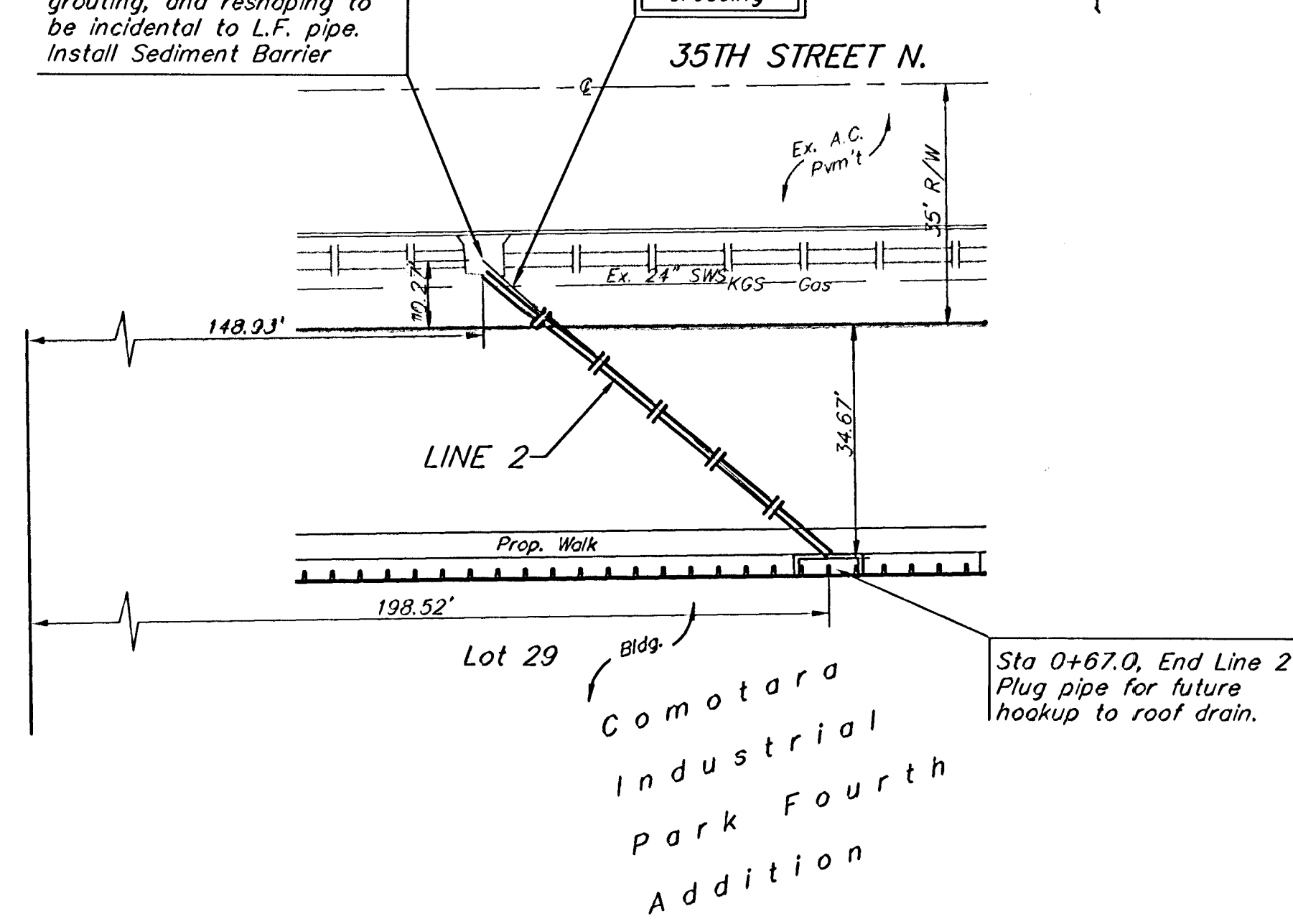
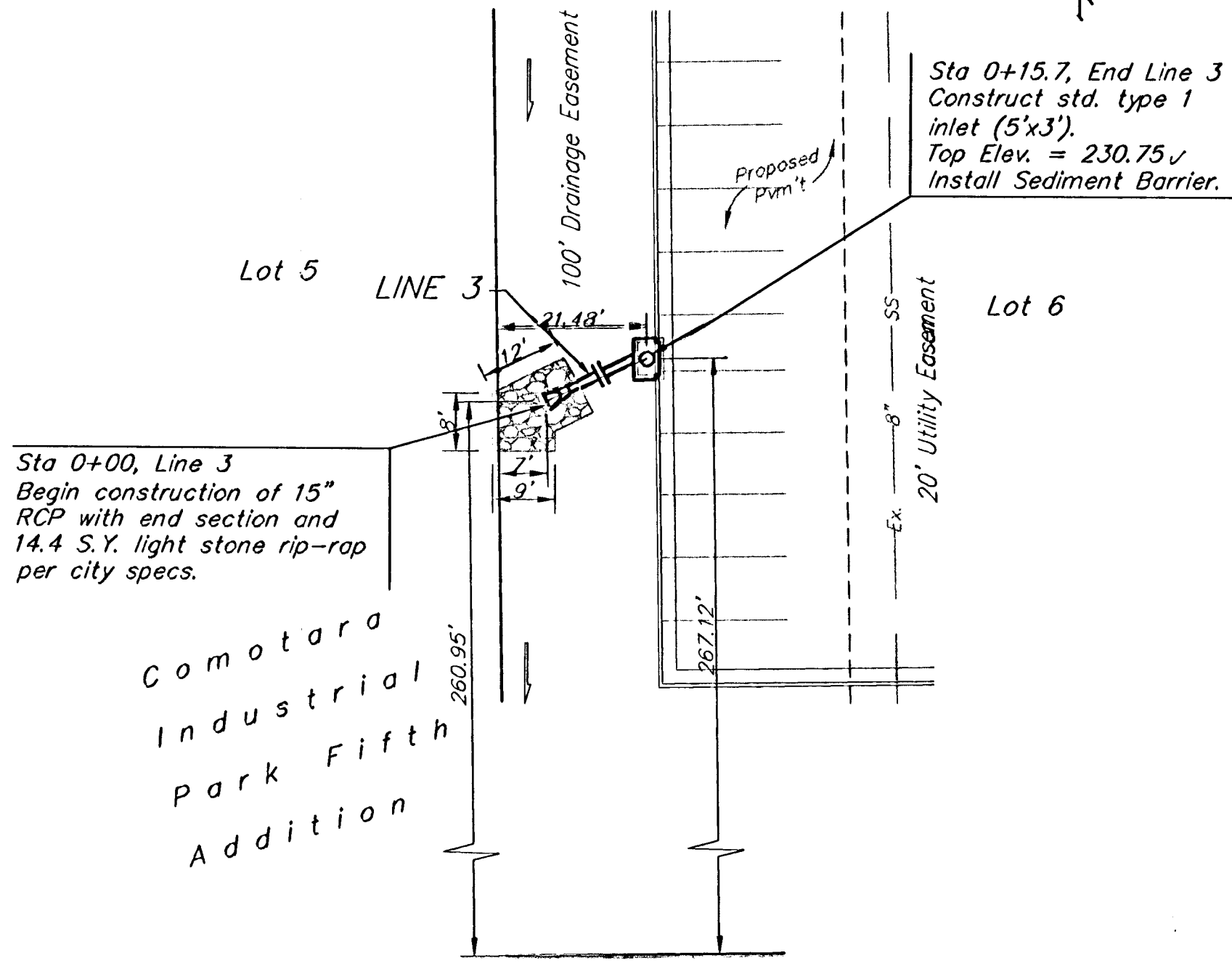


Sta 0+00, Begin Line 2
 Core into existing curb inlet.
 Extend 12" RCP southeast.
 Seal and grout around pipe.
 Reshape invert if necessary.
 Cost of coring, sealing,
 grouting, and reshaping to
 be incidental to L.F. pipe.
 Install Sediment Barrier

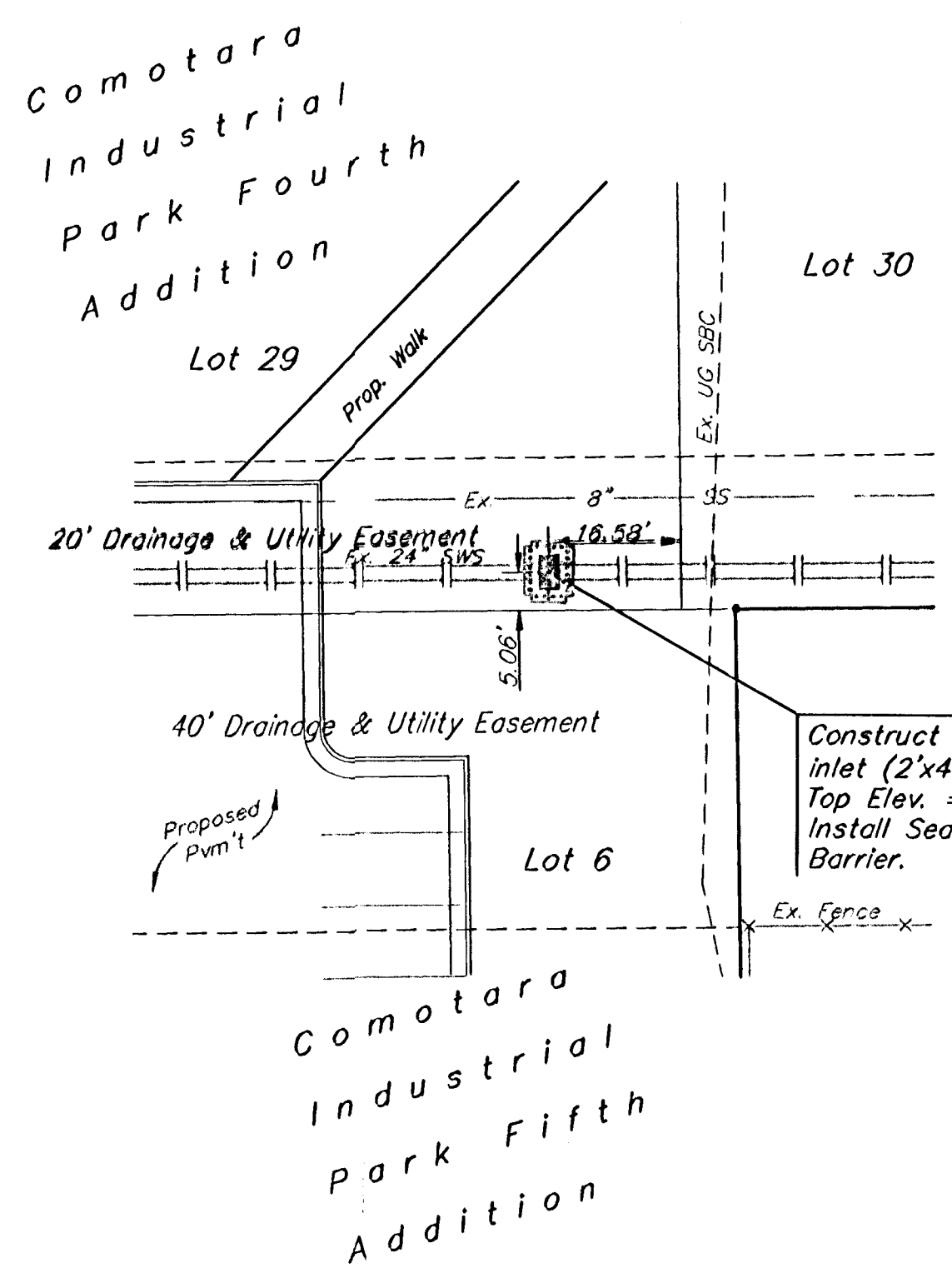
CAUTION!
 Ex. UG Gas
 Crossing



Sta 0+00, Line 3
 Begin construction of 15"
 RCP with end section and
 14.4 S.Y. light stone rip-rap
 per city specs.



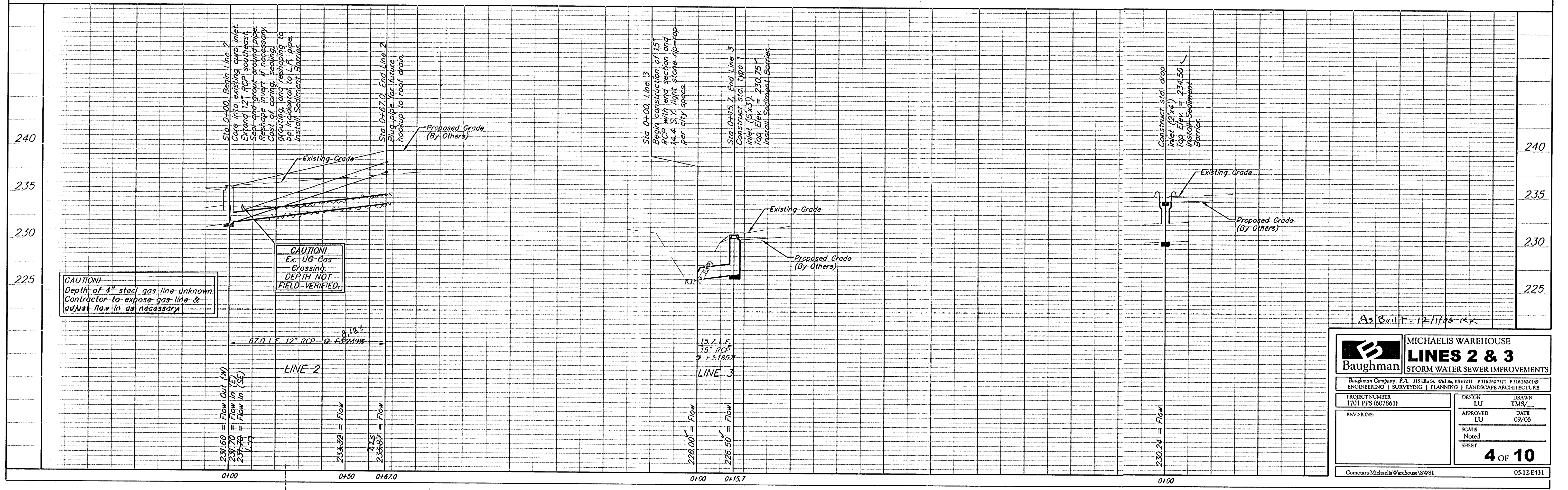
Sta 0+15.7, End Line 3
 Construct std. type 1
 inlet (5'x3').
 Top Elev. = 230.75'
 Install Sediment Barrier.



Scale: 1" = 20' Horizontal
 1" = 5' Vertical
 • = Iron

BENCHMARK:

- #1 City of Wichita Bench Mark at Webb Road and 37th Street North, Northwest corner of intersection. 53.00 Ft. North of center line and 38.00 Ft. West of center line. Elev. = 1414.92 M.S.L. Elev. = 227.52 City Datum
- #2 Railroad Spike Set In The South Face of Power Pole, 80.60' West and 7.13 North of Northwest Corner of Lot 6, Comotara Industrial Park 4th Addition, Wichita, Sedgwick County, Kansas. Elev. = 1424.69 M.S.L. Elev. = 237.29 City Datum



CAUTION!
 Depth of 4" steel gas line unknown.
 Contractor to expose gas line &
 adjust flow in as necessary

CAUTION!
 Ex. UG Gas
 Crossing.
 DEPTH NOT
 FIELD VERIFIED.

As Built - 12/1/10 - RSK

Baughman		MICHAELIS WAREHOUSE	
		LINES 2 & 3	
STORM WATER SEWER IMPROVEMENTS			
Baughman Company, P.A. 315 5th St. Wichita, KS 67211 F165432111 F165432119			
ENGINEERING SURVEYING PLANNING LANDSCAPE ARCHITECTURE			
PROJECT NUMBER 1701 PPS (607861)	DESIGN LU	DRAWN TMS/	
REVISIONS:	APPROVED LU	DATE 09/06	
	SCALE Noted	SHEET	
			4 OF 10

Comotara-MichaelisWarehouse/SWS1 05-12-E431