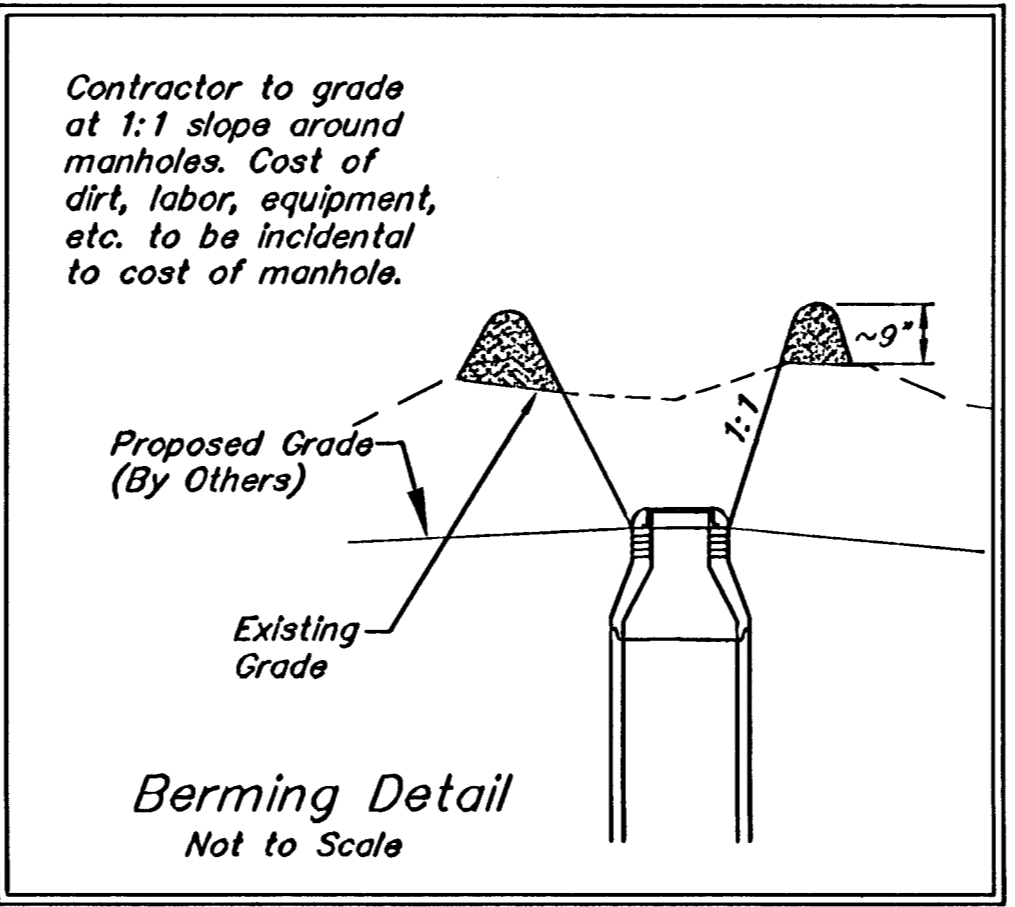


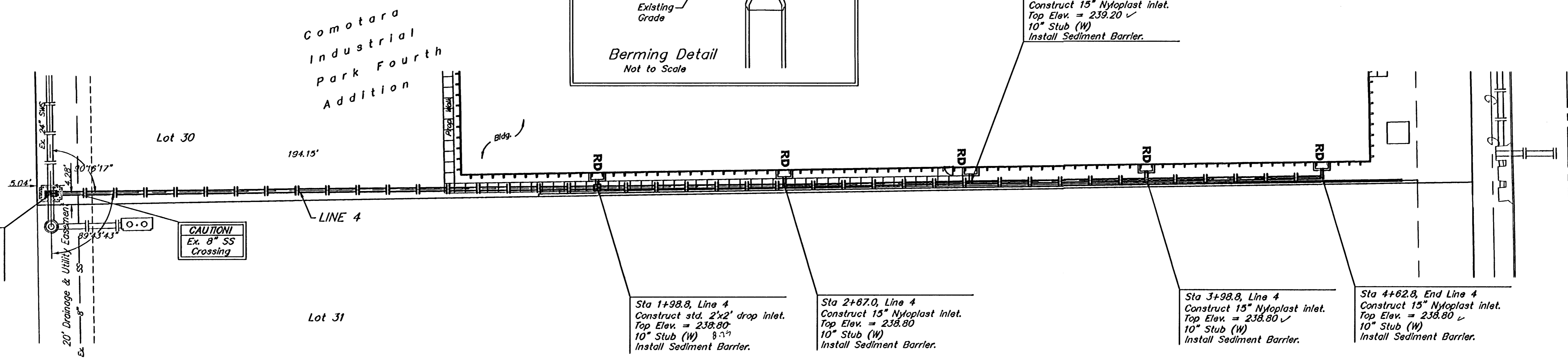
**BENCHMARK:**

#1 City of Wichita Bench Mark at Webb Road and 37th Street North, Northwest corner of Intersection. 53.00 Ft. North of center line and 38.00 Ft. West of center line. Elev. = 1414.92 M.S.L. Elev. = 227.52 City Datum

#2 Railroad Spike Set in The South Face of Power Pole, 80.60' West and 7.13 North of Northwest Corner of Lot 6, Comotara Industrial Park 4th Addition, Wichita, Sedgwick County, Kansas. Elev. = 1424.69 M.S.L. Elev. = 237.29 City Datum



Scale: 1" = 20' Horizontal  
1" = 5' Vertical  
• = Iron



Sta 0+00, Begin Line 4  
Construct std. 2'x4' drop inlet over existing 24" RCP. Top Elev. = 236.00. Install Sediment Barrier.

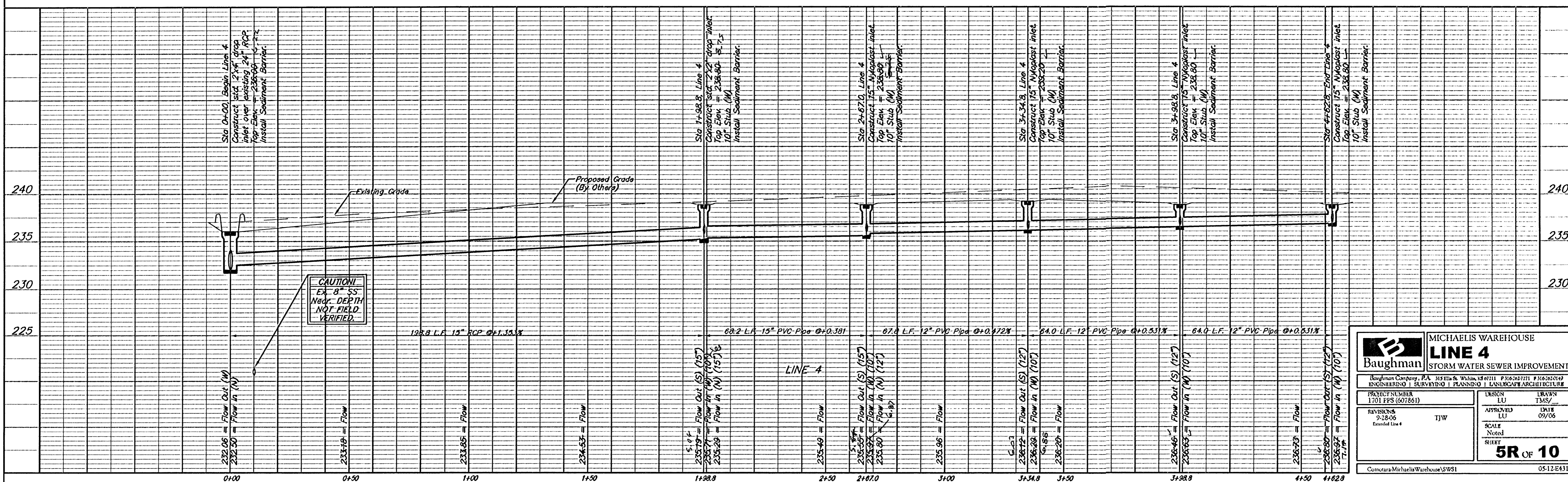
**CAUTION**  
Ex. 8" SS Crossing

Sta 1+98.8, Line 4  
Construct std. 2'x2' drop inlet. Top Elev. = 238.80. 10" Stub (W) 8.77. Install Sediment Barrier.

Sta 2+67.0, Line 4  
Construct 15" Nyloplast inlet. Top Elev. = 238.80. 10" Stub (W) 8.77. Install Sediment Barrier.

Sta 3+98.8, Line 4  
Construct 15" Nyloplast inlet. Top Elev. = 238.80. 10" Stub (W) 8.77. Install Sediment Barrier.

Sta 4+62.8, End Line 4  
Construct 15" Nyloplast inlet. Top Elev. = 238.80. 10" Stub (W) 8.77. Install Sediment Barrier.



		<b>MICHAELIS WAREHOUSE</b> <b>LINE 4</b> <b>STORM WATER SEWER IMPROVEMENTS</b>	
<small>Baughman Company, P.A. 315 Ellis St. Wichita, KS 67211 P 316-262-7771 F 316-262-0149          ENGINEERING   SURVEYING   PLANNING   LANDSCAPE ARCHITECTURE</small>			
PROJECT NUMBER 1701 FPS (607861)	DESIGN LU	DRAWN TMS/	APPROVED LU
REVISIONS 9-28-06 Extended Line 4	T.J.W.	DATE 09/06	SCALE Noted SHEET <b>5R OF 10</b>
<small>Comotara-MichaelisWarehouse/SWS1</small>			<small>05-12-E431</small>