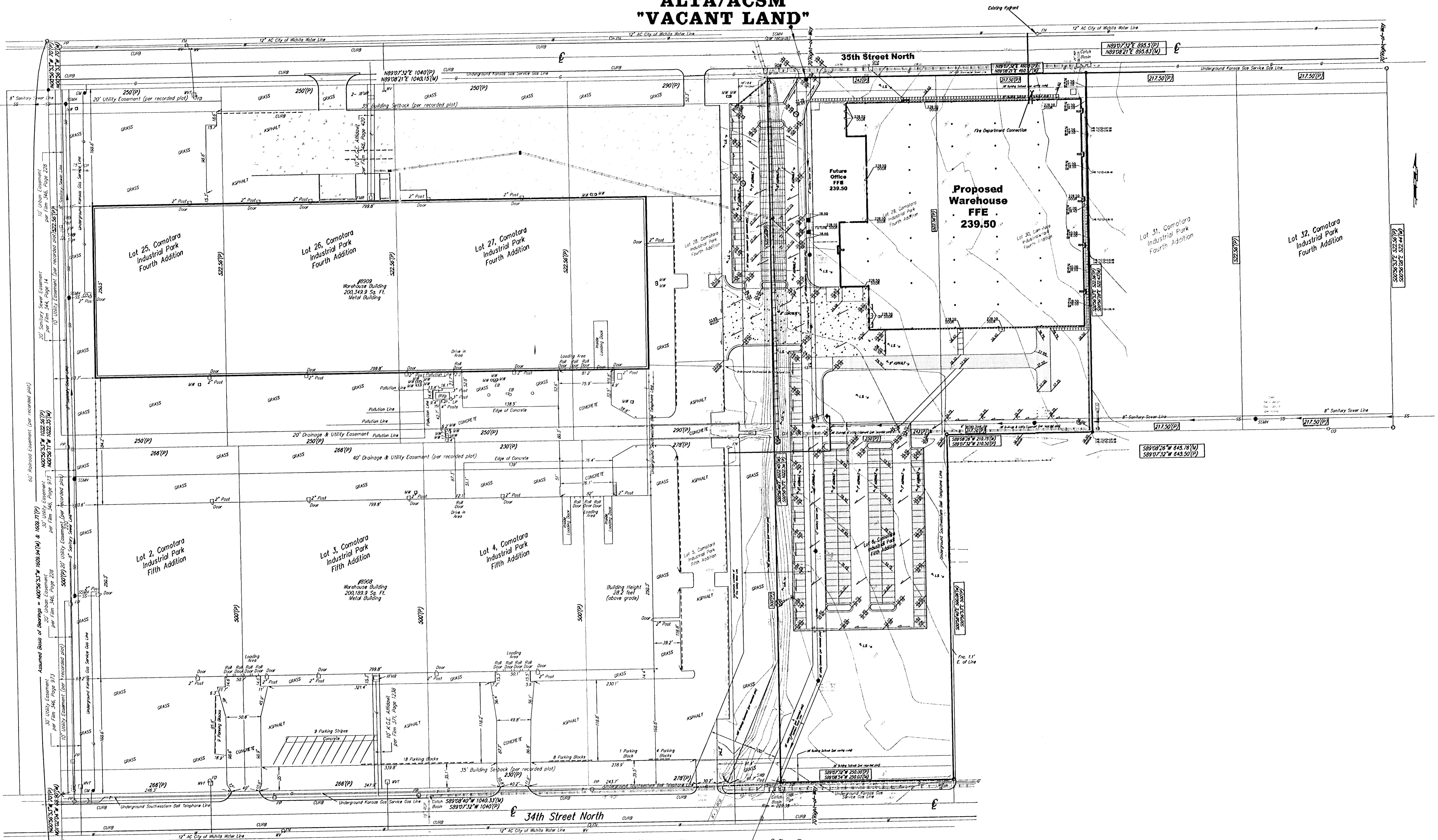
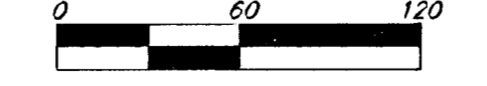


ALTA/ACSM "VACANT LAND"



Assumed Basis of Bearings = N00°55'33"W 1628.94'(M) & 1628.71'(P)
 30' Utility Easement per Firm 346, Page 9/13
 30' Utility Easement per Firm 346, Page 228
 500'(P) 30' Utility Easement (per recorded plat)
 60' Railroad Easement (per recorded plat)
 20' Sanitary Sewer Easement per Firm 346, Page 228
 10' Utility Easement (per recorded plat) 222.55'(P)
 10' Utility Easement (per recorded plat) 222.55'(P)
 10' Utility Easement (per recorded plat) 222.55'(P)



- CD = Cleanout
- EB = Electric Box
- △ FD = Fire Department Hookup
- FH = Fire Hydrant
- GV = Gas Valve
- GM = Gas Meter
- GV = Gas Valve
- GY = Guy Anchor
- LP = Light Pole
- MB = Manhole
- MW = Monitoring Well
- PP = Power Pole
- S = Sign
- SSM = Sanitary Sewer Manhole
- SWP = Southwestern Bell Pedestal
- WM = Water Meter
- WV = Water Valve
- WVT = Water Vault
- YH = Yard Hydrant (Spigot)
- XTMR = Transformer
- = #4 Baughman Rebar Found
- = #4 Rebar Found
- = #6 Mid-Kansas Rebar Found
- △ = 3/4" Iron Pipe Found
- × = 1/2" Iron Pipe Found
- = #6 Reiss & Goodness Rebar Found
- (D) = Described
- (P) = Platted
- (M) = Measured
- (C) = Calculated