

STORM WATER SEWER TO SERVE Summerfield III Commercial

Part of Lot 1, Block 1

Private Project Number: 1666 PPS (607861)

CITY OF WICHITA, KANSAS

James Armour, P.E. City Engineer

June 2006

Bench Marks:

Maize Road & Maple:
City of Wichita Bench Mark
Northwest corner of intersection,
88.50 ft. West of center line,
58.00 ft. North of center line.
Elevation = 135.05 (City Datum)

Index

Cover/Plan/Profile Sheet	1
Siteplan	2
Copy Of Plat	3
2'x4' Drop Inlet Detail	Available on Request
BMP Erosion Details	Available on Request
Manhole Detail	Available on Request
Frame & Cover Detail	Available on Request

Legal Description

Part of Lot 1, Block 1, Summerfield III Commercial,
an Addition Wichita, Sedgwick County Kansas.

General Notes

- Contractor will be required to provide notice to utility companies a minimum of forty-eight (48) hours prior to any excavation, as follows:
Kansas One-Call 687-2470
The Contractor must notify the following in case of an emergency:
Cox Communications 262-4270
Kansas Gas Service Company 1-888-482-4350
Westar Energy (Electric) 383-8650
Aquila Energy (Gas) 1-800-303-0357
Southwestern Bell Telephone Co. 1-800-286-8313
City of Wichita Water Dept. (Water) 262-6000
City of Wichita Sewer Maint. (SS) 262-6000
City of Wichita Storm Sewer Maint. 268-4090
City of Wichita Traffic Maint. 268-4034
- All disturbed R/W areas not intended for pavement or sidewalk construction shall be seeded with Kansas Premium Fescue Blend at a rate of 8 lb./1000 Sq. Ft., fertilized with a 16-20-6 ratio at a rate of 4 lb./1000 Sq. Ft., and mulched with Prairie Hay at a rate of 92 lb./1000 Sq. Ft. Mulch shall be "patted" with forks or punched into soil to reduce loss due to wind.
- Utility service lines, poles, valve boxes, meters, et cetera are to be adjusted as necessary by others prior to construction unless the plans specifically call for their adjustment by the Contractor or unless the plans specifically identify a utility to be adjusted by its owner during construction. Existing utilities and their location, as shown on the plans represent the best information obtainable for design and shall be field verified. The contractor will be required to work around existing utilities within the right-of-way which do not conflict with proposed construction.
- All storm sewers and appurtenances shall be installed in accordance with the most recent edition of City of Wichita, Kansas Standard Specifications for the Construction of City Projects.
- Drop inlet, manhole, frame and cover details and BMP erosion details available from Baughman Company, P.A. Contact Lee Ullum (262-7271).
- Contractor shall not start work on the project until the project inspector is assigned to the project and is present on the site. Contractor shall not start on the project until all necessary bonds and permits have been obtained. Bonds may include but are not limited to Statutory, Performance & Maintenance for areas in public right-of-way and easement. For projects within the City of Wichita contact Tom Mason (268-4574). Any work done without inspection will be required to be uncovered for inspection.
- Rubble from the removal of miscellaneous structures and excess excavation which is to be wasted shall be disposed of on sites to be provided by the Contractor. These sites shall be approved by the Engineer as to suitability, appearance and site location. Locations that, in the opinion of the Engineer, will leave an unsightly appearance will not be approved. All disposal sites must be approved by the Kansas Department of Health and Environment. Material either stockpiled or disposed of in a flood plain would require a Kansas State Board of Agriculture permit. Any material dumped in waters of the United States or wetlands is subject to U.S. Corps. of Engineers permitting regulations. Any material buried or stockpiled beyond approved construction limits would require additional archaeological investigations unless buried in a previously approved borrow location.

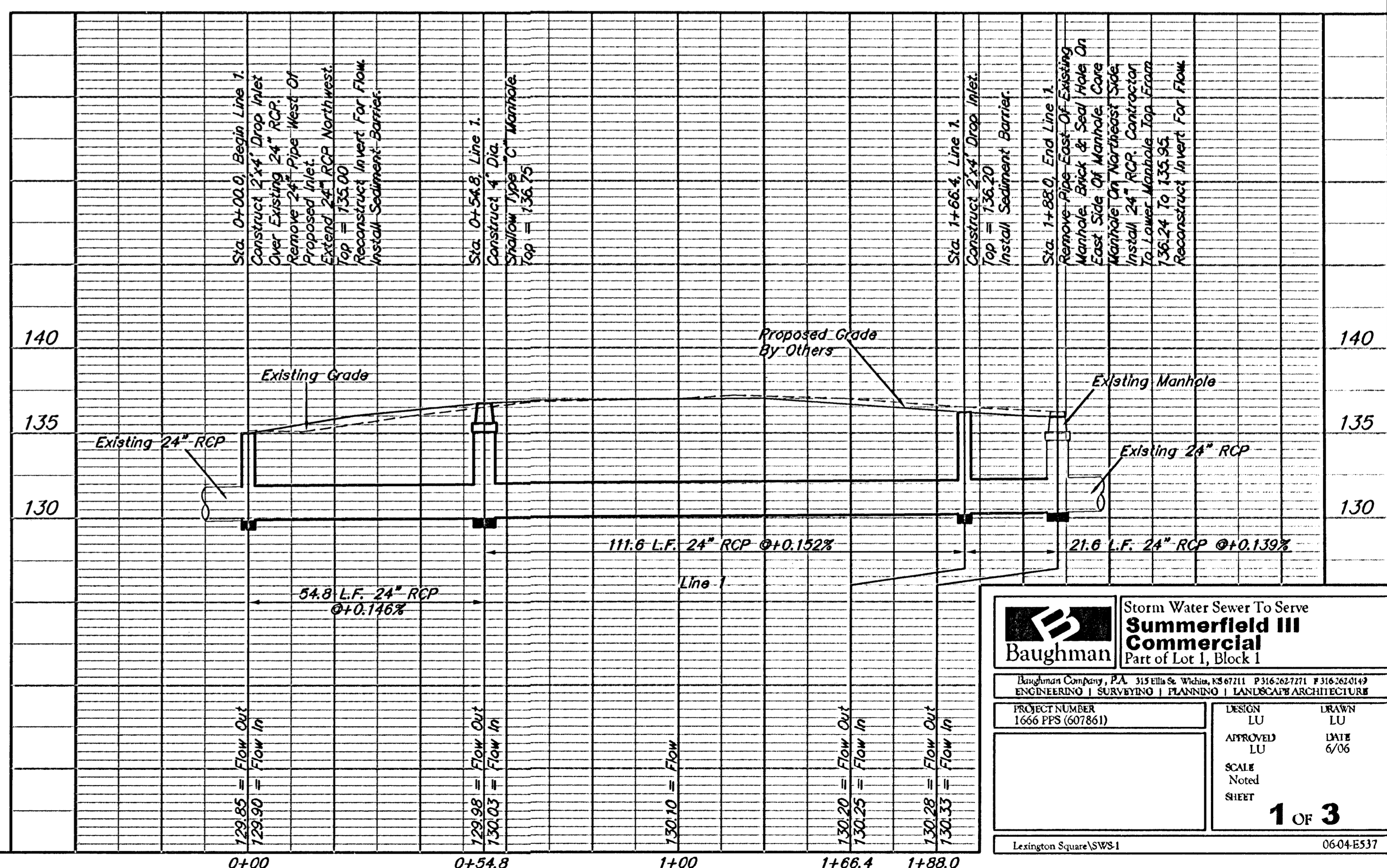
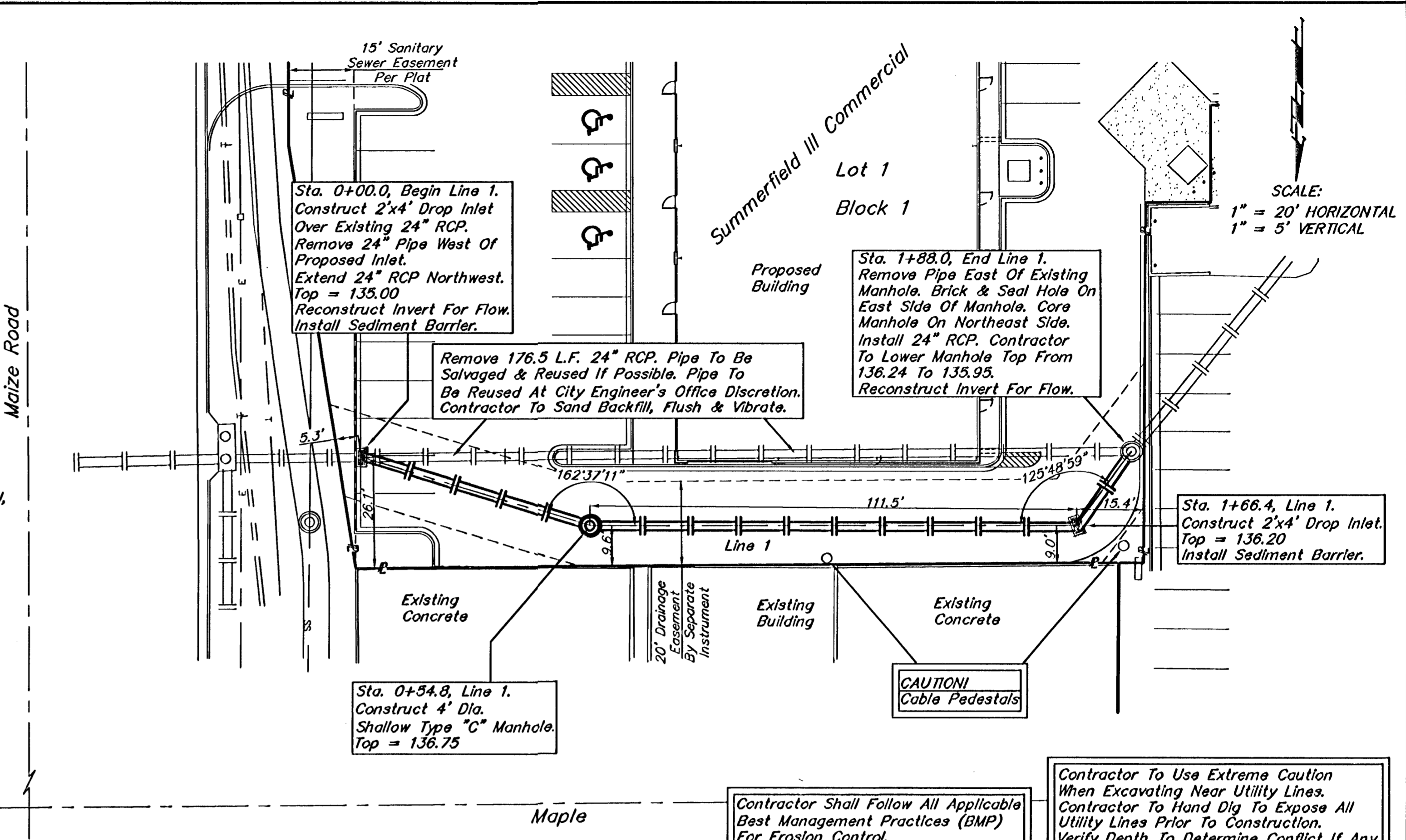
APPROVED AS NOTED
BY CITY ENGINEER OF WICHITA

Storm Sewers *LSA 6-16-06*

NOTE TO CONTRACTORS

Installation, inspection and testing for this project is to be provided by a Licensed Consulting Engineering Firm under contract with the Owner/Developer. Said inspection to be in accordance with the City of Wichita standard construction engineering practices and certified by a Licensed Professional Engineer. No work shall be performed in dedicated easements or public right-of-way by the Contractor without such inspection nor shall any work be commenced without written authorization by the City Engineer. All Construction and Materials shall comply with the City of Wichita Specifications and Standards (on file and available in the City Engineer's Office).

AS-BUILT
9/6/06
Date: 6-16-06
Signed: *[Signature]*



Baughman Storm Water Sewer To Serve
Summerfield III Commercial
Part of Lot 1, Block 1

Baughman Company, P.A. 315 Ellis St. Wichita, KS 67211 P316-2627271 F316-2620149
ENGINEERING | SURVEYING | PLANNING | LANDSCAPE ARCHITECTURE

PROJECT NUMBER 1666 PPS (607861)	DESIGN LU	DRAWN LU
	APPROVED LU	DATE 6/06
	SCALE Noted	SHEET 1 OF 3

Lexington Square/SWS-1 0604-E537

