

BENCHMARK:
CITY OF WICHITA DISC - MAIZE RD. & STERLING,
(2400 BLOCK N.), TOP OF CURB, WEST END OF
MEDIAN ON C OF STERLING.
61' E. OF C OF MAIZE RD.
ELEV. = 1353.57 NGVD29

SMALL RAILROAD SPIKE IN E. FACE OF POWER POLE,
34.6' S. & 6.9' W. OF THE NW COR. OF LOT 2,
BLOCK A.
ELEV. = 1351.99 NGVD29

Sta. 0+00, Begin Line 1
Begin construction of 18" RCP.
Connect to existing curb inlet.
Reshape invert as needed.
Reshaping, sealing, grouting,
connect to inlet, etc. shall be
subsidiary to cost of RCP.

Sta. 0+35.6, Line 1
= Sta. 0+00, Line 3
Const. Std Typ-1A Single
Curb Inlet. (5' x 3')
Top Elev. = 1352.00

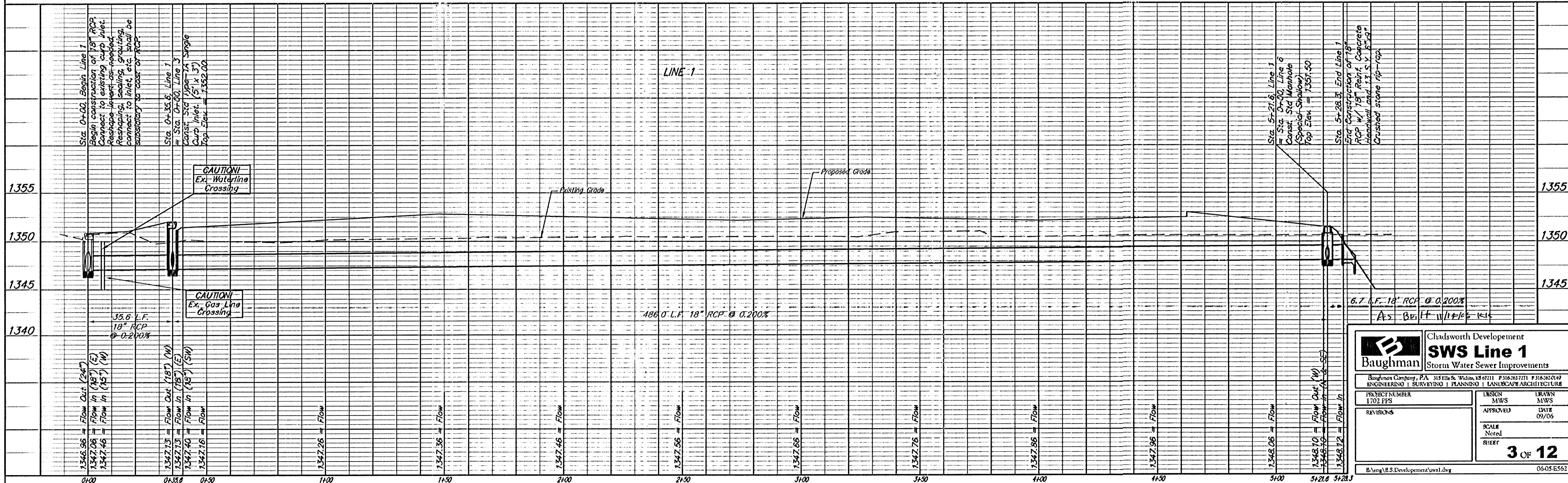
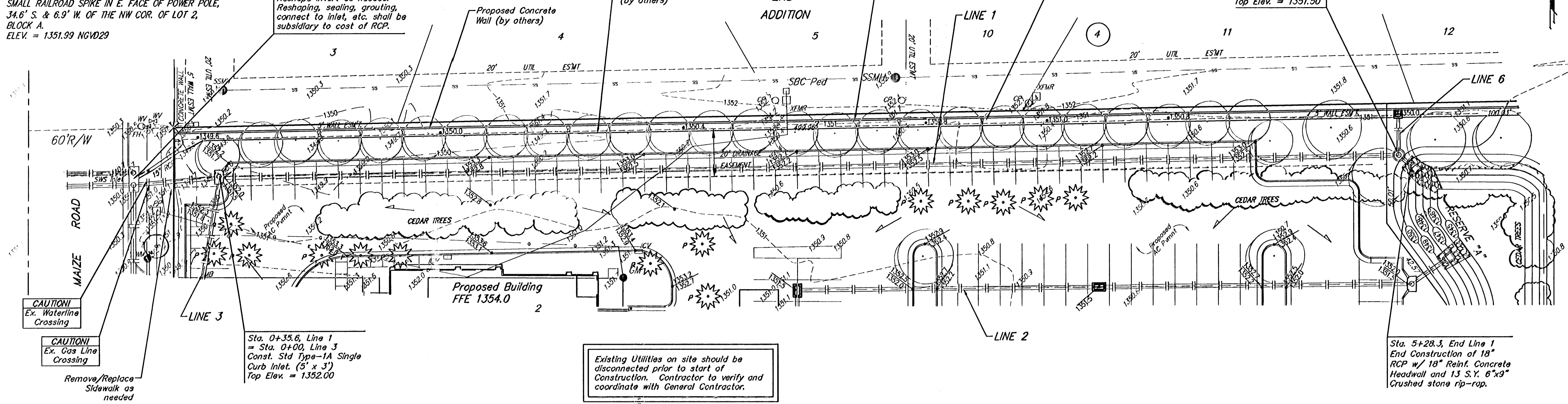
Existing Utilities on site should be
disconnected prior to start of
Construction. Contractor to verify and
coordinate with General Contractor.

Install 4" Square Weep Holes
in concrete wall every 10' and
where there is a depression in
residential yard along wall to
allow proper drainage to swala. Wall Contractor
responsible for openings.

Construct approx.
505 l.f. 3' wide
flume per detail,
sheet 2

Sta. 5+21.6, Line 1
= Sta. 0+00, Line 6
Const. Std Manhole
(Special Shallow)
Top Elev. = 1351.50

SCALE:
1" = 20' HORIZONTAL
1" = 5' VERTICAL
• = IRON



		Chadsworth Development SWS Line 1 Storm Water Sewer Improvements	
<small>Baughman Company, P.A. 315 Ellis St. Wichita, KS 67211 P 316.263.7271 F 316.262.0149 ENGINEERING SURVEYING PLANNING LANDSCAPE ARCHITECTURE</small>			
PROJECT NUMBER 1702 FPS	DESIGN MWS	DRAWN MWS	DATE 09/05
REVISIONS	APPROVED	SCALE Noted	SHEET 3 OF 12
<small>B:\eng\B.S.Development\sws1.dwg</small>			<small>06-05-562</small>