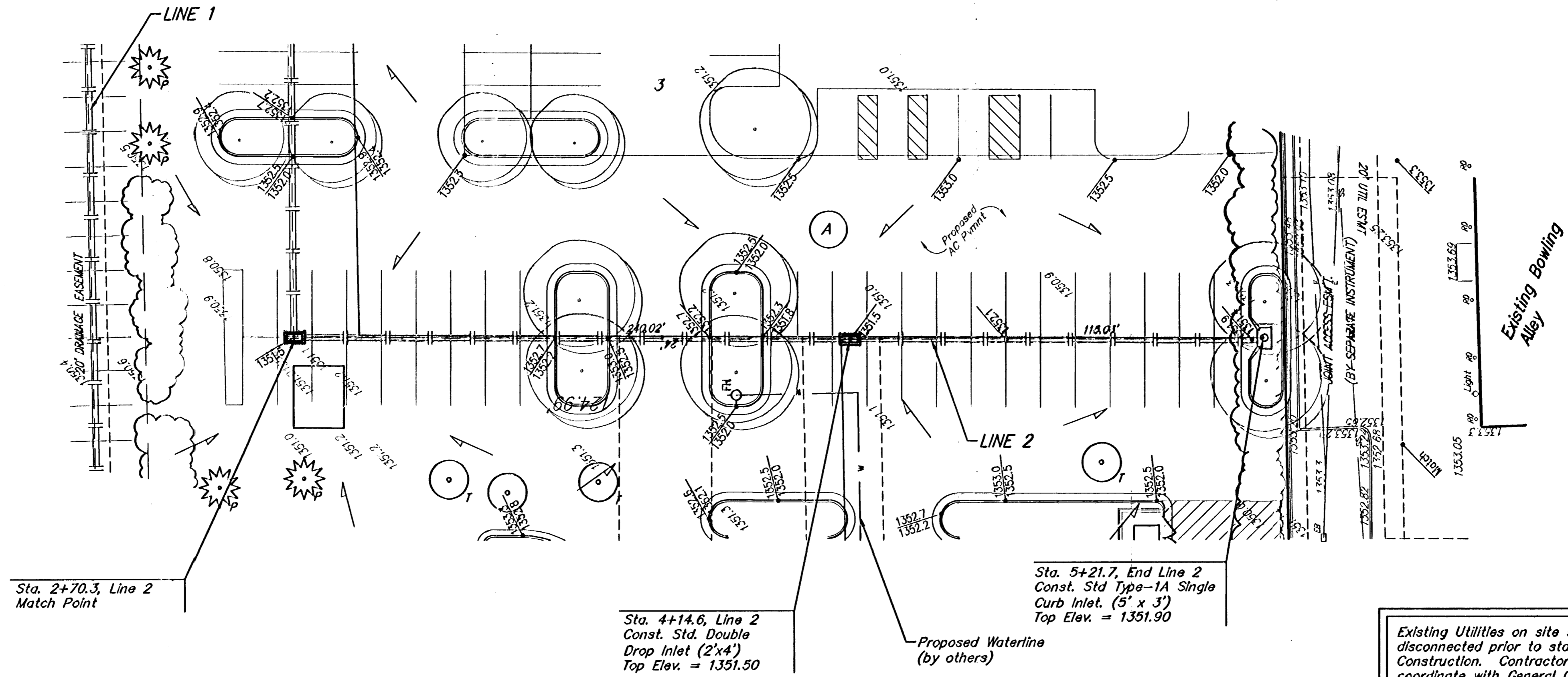


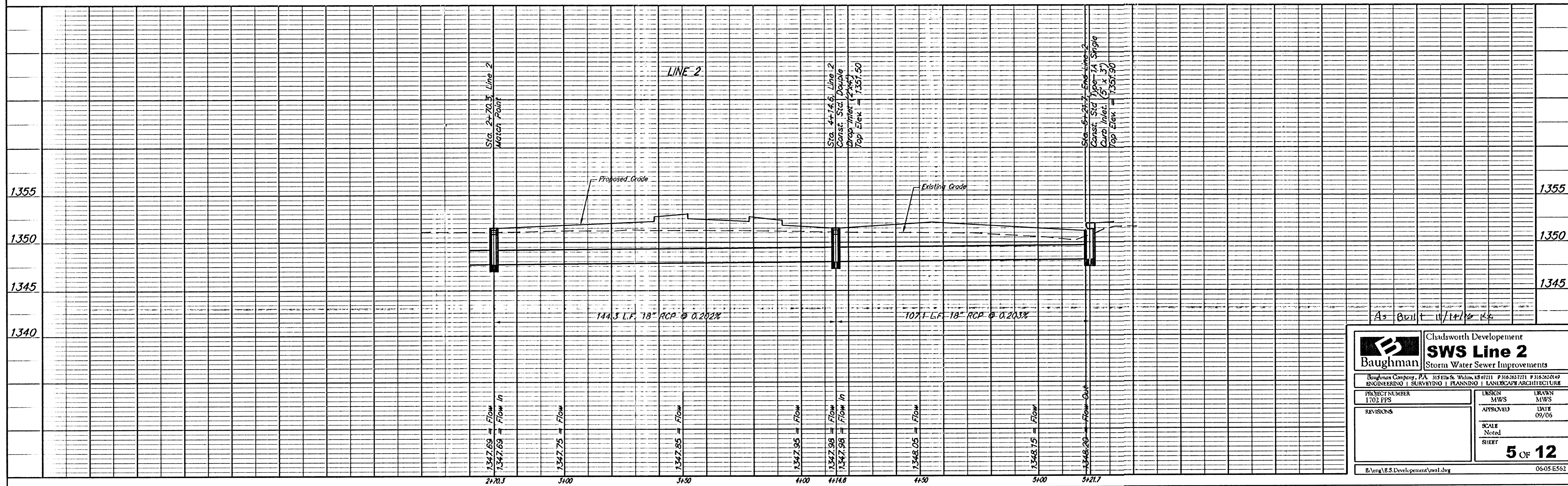
BENCHMARK:
CITY OF WICHITA DISC - MAIZE RD. & STERLING,
(2400 BLOCK N.), TOP OF CURB, WEST END OF
MEDIAN ON C OF STERLING,
61' E. OF C OF MAIZE RD.
ELEV. = 1353.57 NGVD29

SMALL RAILROAD SPIKE IN E. FACE OF POWER POLE,
34.6' S. & 6.9' W. OF THE NW COR. OF LOT 2,
BLOCK A.
ELEV. = 1351.99 NGVD29



SCALE:
1" = 20' HORIZONTAL
1" = 5' VERTICAL
• = IRON

Existing Utilities on site should be disconnected prior to start of Construction. Contractor to verify and coordinate with General Contractor.



		Chadsworth Development SWS Line 2 Storm Water Sewer Improvements	
<small>Baughman Company, P.A. 315 Ellis St. Wichita, KS 67211 P 316-263-7171 F 316-263-0149 ENGINEERING SURVEYING PLANNING LANDSCAPE ARCHITECTURE</small>			
PROJECT NUMBER 1702 PFS	DESIGN MWS	DRAWN MWS	
REVISIONS	APPROVED	DATE 09/05	
		SCALE Noted	
		SHEET 5 OF 12	
<small>E:\Veng\B.S.Development\sws1.dwg</small>			<small>06-05-E562</small>