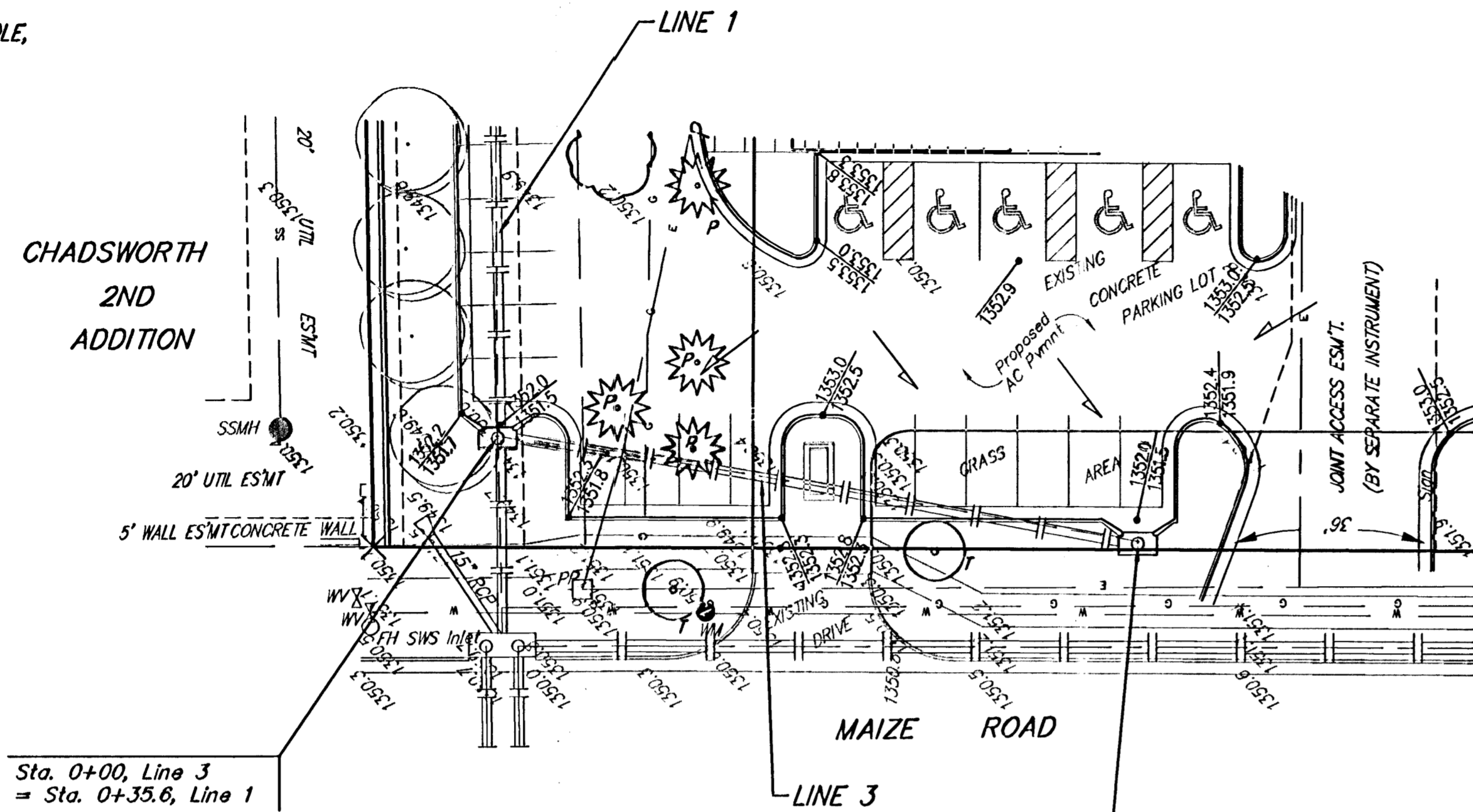


BENCHMARK:
CITY OF WICHITA DISC - MAIZE RD. & STERLING,
(2400 BLOCK N.), TOP OF CURB, WEST END OF
MEDIAN ON C OF STERLING.
61' E. OF C OF MAIZE RD.
ELEV. = 1353.57 NGVD29

SMALL RAILROAD SPIKE IN E. FACE OF POWER POLE,
34.6' S. & 6.9' W. OF THE NW COR. OF LOT 2,
BLOCK A.
ELEV. = 1351.99 NGVD29

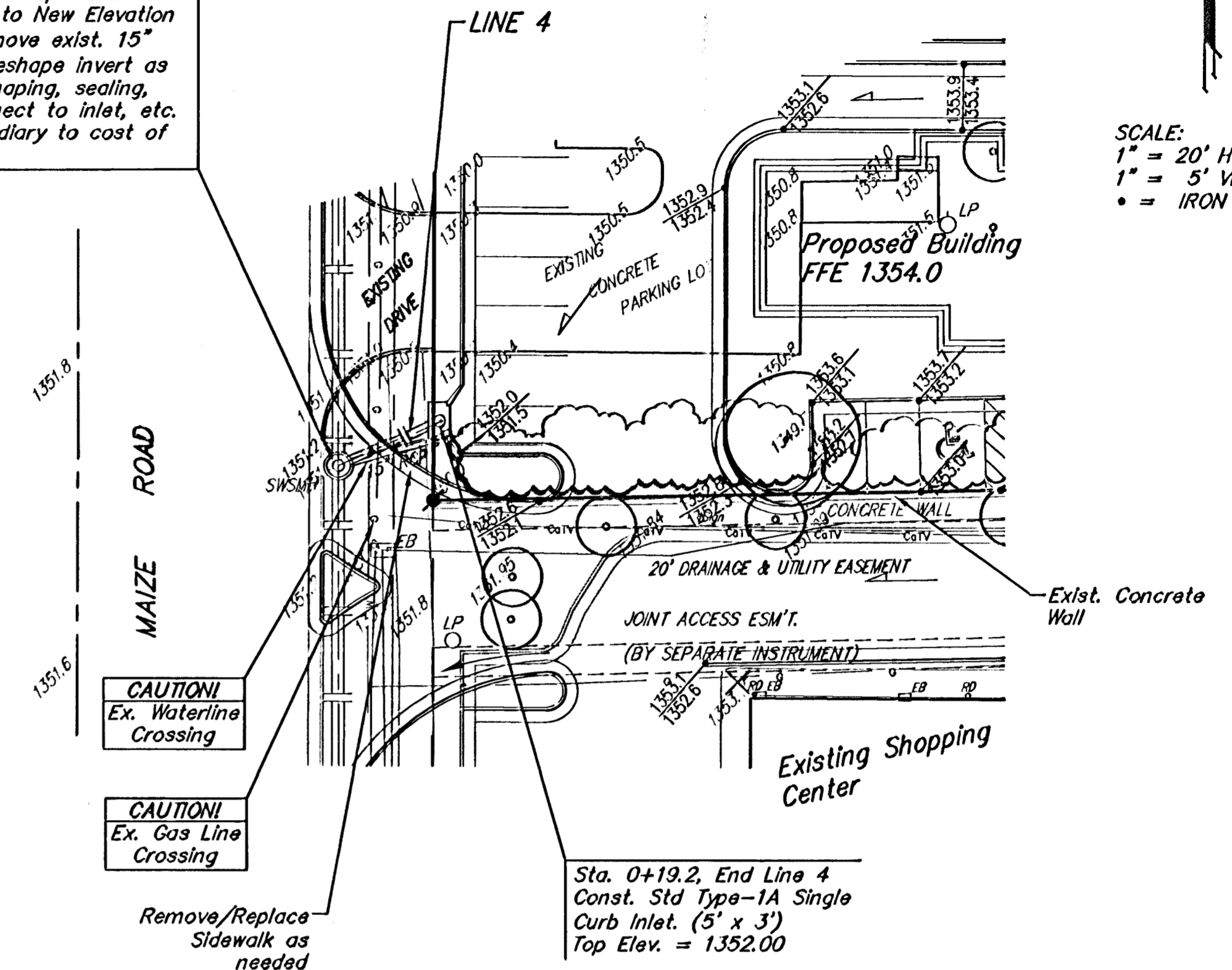


Sta. 0+00, Line 3
= Sta. 0+35.6, Line 1

Sta. 1+07.4, End Line 3
Const. Std Type-1A Single
Curb Inlet. (5' x 3')
Top Elev. = 1352.00

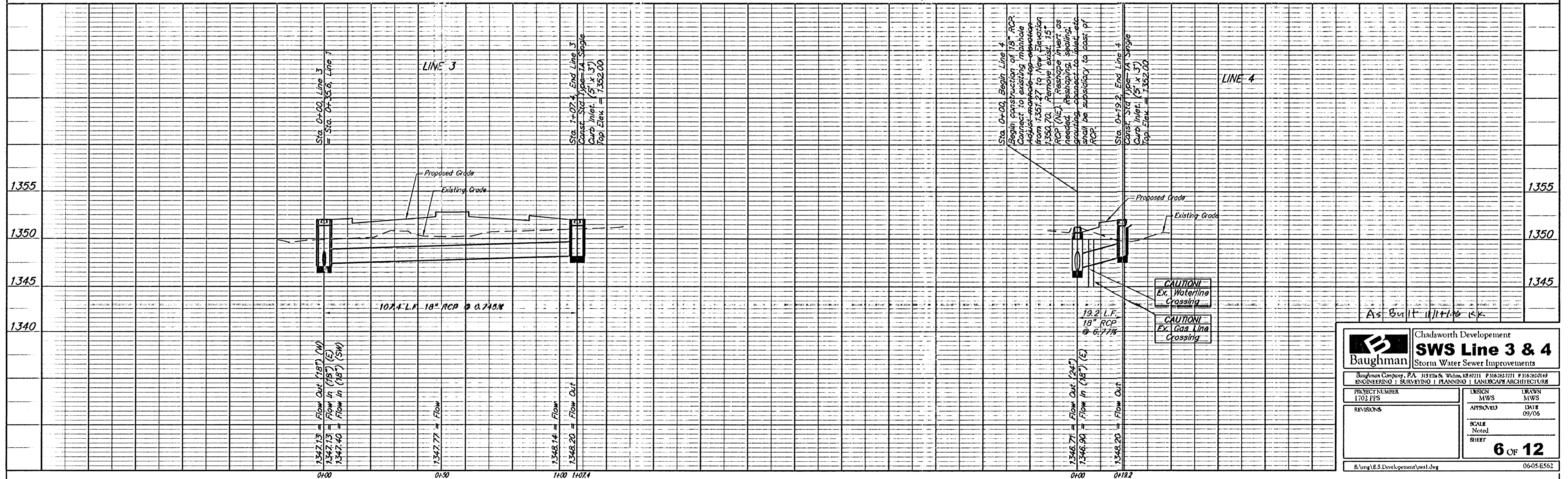
Existing Utilities on site should be
disconnected prior to start of
Construction. Contractor to verify and
coordinate with General Contractor.

Sta. 0+00, Begin Line 4
Begin construction of 18" RCP.
Connect to existing manhole.
Adjust manhole top elevation
from 1351.27 to New Elevation
1350.70. Remove exist. 15"
RCP (NE). Reshape invert as
needed. Reshaping, sealing,
grouting, connect to inlet, etc.
shall be subsidiary to cast of
RCP.



Sta. 0+19.2, End Line 4
Const. Std Type-1A Single
Curb Inlet. (5' x 3')
Top Elev. = 1352.00

SCALE:
1" = 20' HORIZONTAL
1" = 5' VERTICAL
• = IRON



1342.13 = Flow Out (18") (W)
1342.13 = Flow In (18") (E)
1342.40 = Flow In (18") (SW)

1342.77 = Flow

1348.14 = Flow
1348.20 = Flow Out

1346.71 = Flow Out (24") (E)
1346.90 = Flow In (18") (E)

1348.20 = Flow Out

		Chadsworth Development SWS Line 3 & 4 Storm Water Sewer Improvements	
<small>Baughman Company, P.A. 315 Elm & Walnut, KS 67211 P 316-262-7771 F 316-262-0149 ENGINEERING SURVEYING PLANNING LANDSCAPE ARCHITECTURE</small>			
PROJECT NUMBER 1702 PPS	DESIGN MWS	DRAWN MWS	DATE 09/06
REVISIONS	APPROVED	SCALE Noted	SHEET 6 OF 12
<small>B:\Veng\B.S.Development\sws1.dwg</small>			<small>0605E562</small>