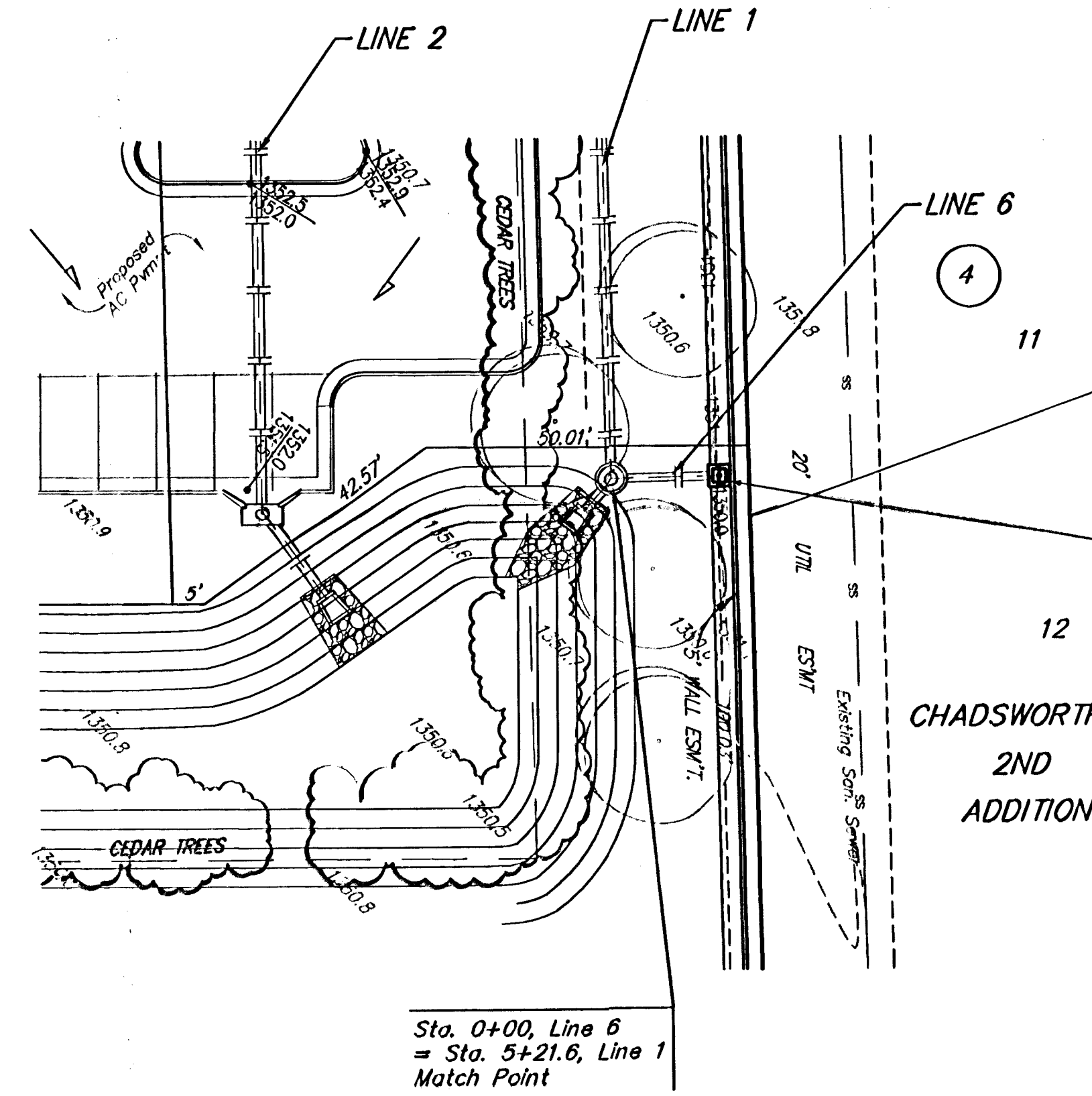
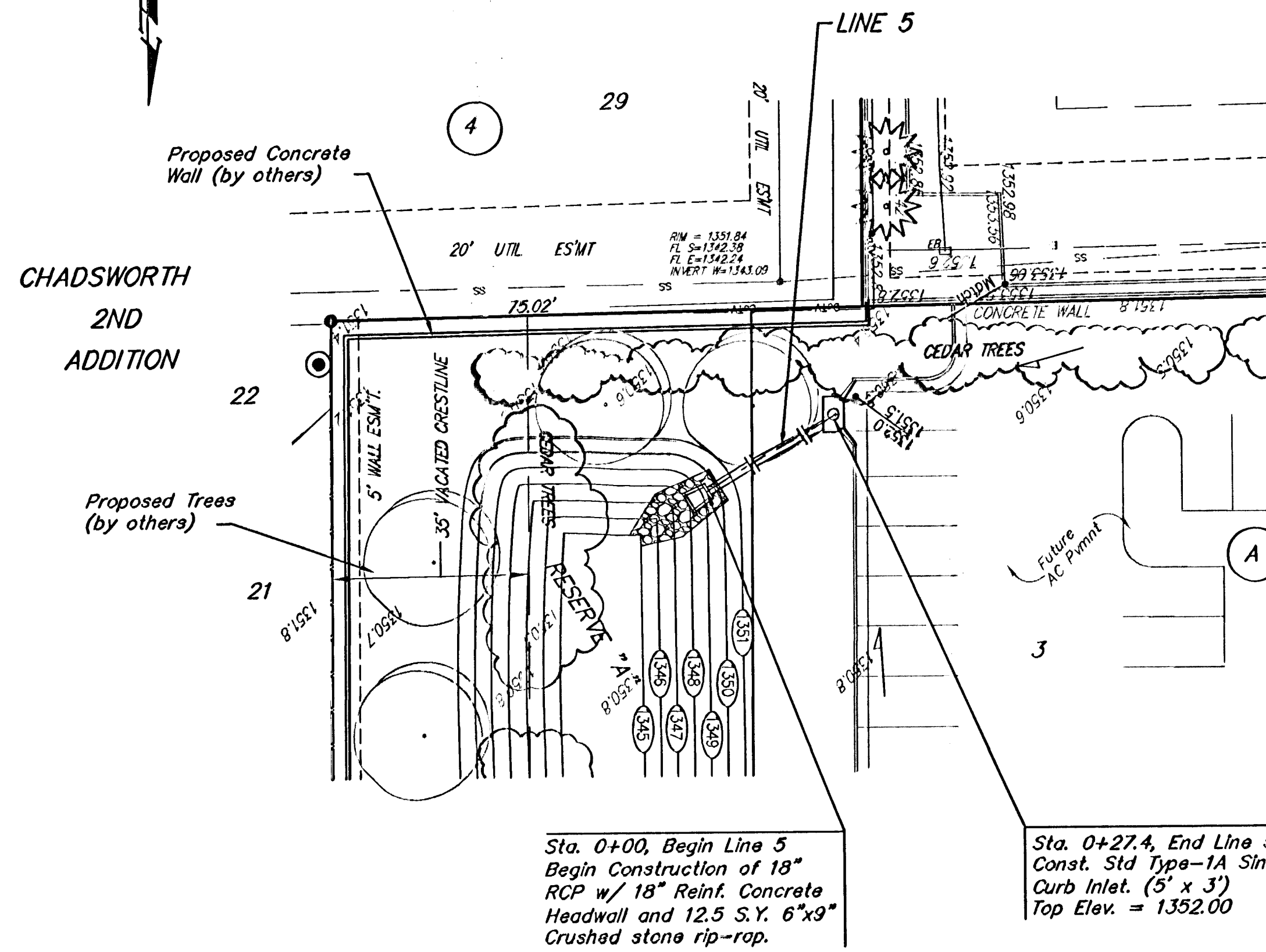


BENCHMARK:  
CITY OF WICHITA DISC - MAIZE RD. & STERLING,  
(2400 BLOCK N.), TOP OF CURB, WEST END OF  
MEDIAN ON C OF STERLING.  
61' E. OF C OF MAIZE RD.  
ELEV. = 1353.57 NGVD29

SMALL RAILROAD SPIKE IN E. FACE OF POWER POLE,  
34.6' S. & 6.9' W. OF THE NW COR. OF LOT 2,  
BLOCK A.  
ELEV. = 1351.99 NGVD29



SCALE:  
1" = 20' HORIZONTAL  
1" = 5' VERTICAL  
• = IRON



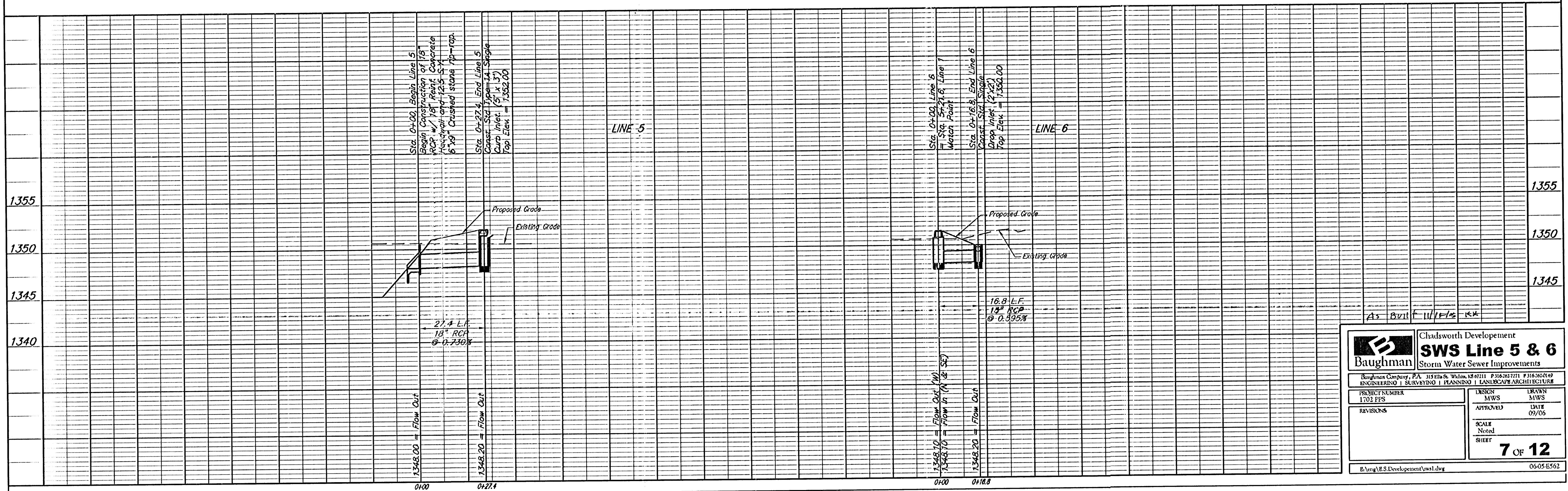
Sta. 0+16.8, End Line 6  
Const. Std. Single  
Drop Inlet (2'x2')  
Top Elev. = 1350.00

Existing Utilities on site should be  
disconnected prior to start of  
Construction. Contractor to verify and  
coordinate with General Contractor.

Sta. 0+00, Begin Line 5  
Begin Construction of 18"  
RCP w/ 18" Reinf. Concrete  
Headwall and 12.5 S.Y. 6"x9"  
Crushed stone rip-rap.

Sta. 0+27.4, End Line 5  
Const. Std. Type-1A Single  
Curb Inlet (5' x 3')  
Top Elev. = 1352.00

Sta. 0+00, Line 6  
= Sta. 5+21.6, Line 1  
Match Point



		Chadsworth Development <b>SWS Line 5 &amp; 6</b> Storm Water Sewer Improvements	
<small>Baughman Company, P.A. 319 Ellis St. Wichita, KS 67211 P 316-262-7171 F 316-262-6147          ENGINEERING   SURVEYING   PLANNING   LANDSCAPE ARCHITECTURE</small>			
PROJECT NUMBER 1702 PFS	DESIGN MWS	DRAWN MWS	DATE 09/06
REVISIONS	APPROVED	SCALE Noted	SHEET <b>7 OF 12</b>
<small>E:\eng\B.S.Development\sws1.dwg</small>			<small>06-05-E562</small>