


# STORM WATER SEWER PLANS FOR LOTS 2 & 3, BLOCK 1 WATERFRONT 2nd ADDITION

CITY OF WICHITA, KANSAS  
NEIL D. CABLE, P.E., CITY ENGINEER

PRIVATE PROJ. #1398 PPS  
OCA #607861

## GENERAL NOTES

1. THE TOPS OF INLETS AND MANHOLES AS NOTED ON THE PLANS MAY VARY SO AS TO MEET PROPOSED TOP OF CURB ELEVATIONS OR PAVEMENT ELEVATIONS. THE FIELD ENGINEER SHALL LOCATE INLETS WITH REFERENCE TO PROPOSED PAVING PLANS OF THE PERTINENT STREETS.
2. ALL CONCRETE SHALL BE STANDARD PAVING MIX UNLESS OTHERWISE NOTED.
3. THE CONTRACTOR SHALL BE RESPONSIBLE FOR PRESERVING PROPERTY IRONS. THE CONTRACTOR SHALL BE REQUIRED TO RE-ESTABLISH ANY PROPERTY IRONS WHICH ARE DAMAGED OR DESTROYED BY HIS CONSTRUCTION OPERATIONS. SUCH IRONS SHALL BE RE-ESTABLISHED BY A LICENSED LAND SURVEYOR IN ACCORDANCE WITH STATE LAWS.
4. TREES TO BE REMOVED ARE MARKED . ALL TREES WHICH IN THE OPINION OF THE FIELD ENGINEER CAN BE SAVED, SHALL BE SAVED.
5. CONTRACTOR SHALL NOTIFY UTILITY COMPANIES OF CONSTRUCTION SCHEDULING
6. EXISTING UTILITIES AND THEIR LOCATIONS, AS SHOWN ON THE PLANS REPRESENT THE BEST INFORMATION OBTAINABLE FOR DESIGN. LOCATION INFORMATION HAS BEEN OBTAINED FROM THE VARIOUS COMPANIES AND IS EITHER FROM COMPANY UTILITY DRAWINGS OR COMPANY PROVIDED FIELD LOCATIONS. THE PLAN LOCATIONS SHOWN ARE NOT GUARANTEED. ADDITIONAL EXISTING UTILITIES MAY ALSO BE ENCOUNTERED.
7. CONTRACTOR WILL BE REQUIRED TO PROVIDE A MINIMUM ADVANCE NOTICE OF SEVENTY-TWO (72) HOURS TO UTILITY COMPANIES PRIOR TO STARTING ANY EXCAVATION AS FOLLOWS:  
  

KANSAS ONE-CALL	1-800-344-7233
	689-2470 (LOCAL WICHITA)

THE CONTRACTOR MUST NOTIFY THE FOLLOWING IN CASE OF AN EMERGENCY:

COX COMMUNICATIONS (CABLE):	262-0661
KANSAS GAS SERVICE (GAS):	832-3101
WESTAR (ELECTRIC):	261-6512
AQUILA (GAS):	946-0098
SBC (TELEPHONE):	800-870-8390
CITY OF WICHITA WATER & SEWER:	262-6000
8. UNLESS SHOWN OR STATED OTHERWISE ON THESE DRAWINGS, MATERIALS AND CONSTRUCTION SHALL BE IN ACCORDANCE WITH CITY OF WICHITA STANDARD SPECIFICATIONS.
9. RUBBLE FROM THE REMOVAL OF MISCELLANEOUS STRUCTURES AND EXCESS EXCAVATION WHICH IS TO BE WASTED SHALL BE DISPOSED OF ON SITES TO BE PROVIDED BY THE CONTRACTOR. THESE SITES SHALL BE APPROVED BY THE ENGINEER AS TO SUITABILITY, APPEARANCE AND SITE LOCATION. LOCATIONS THAT, IN THE OPINION OF THE ENGINEER, WILL LEAVE AN UNSIGHTLY APPEARANCE WILL NOT BE APPROVED. ALL DISPOSAL SITES MUST BE APPROVED BY THE KANSAS DEPARTMENT OF HEALTH AND ENVIRONMENT. MATERIAL EITHER STOCKPILED OR DISPOSED OF IN A FLOOD PLAIN WOULD REQUIRE A KANSAS STATE BOARD OF AGRICULTURE PERMIT. ANY MATERIAL DUMPED IN WATERS OF THE UNITED STATES OR WETLANDS IS SUBJECT TO U.S. CORPS OF ENGINEERS PERMITTING REGULATIONS. ANY MATERIAL BURIED OR STOCKPILED BEYOND APPROVED CONSTRUCTION LIMITS WOULD REQUIRE ADDITIONAL ARCHAEOLOGICAL INVESTIGATIONS UNLESS BURIED IN A PREVIOUSLY APPROVED BORROW LOCATION.
10. SITE RESTORATION AND PREPARATION SHALL BE SUBSIDIARY TO THE PROJECT.

## BENCHMARKS

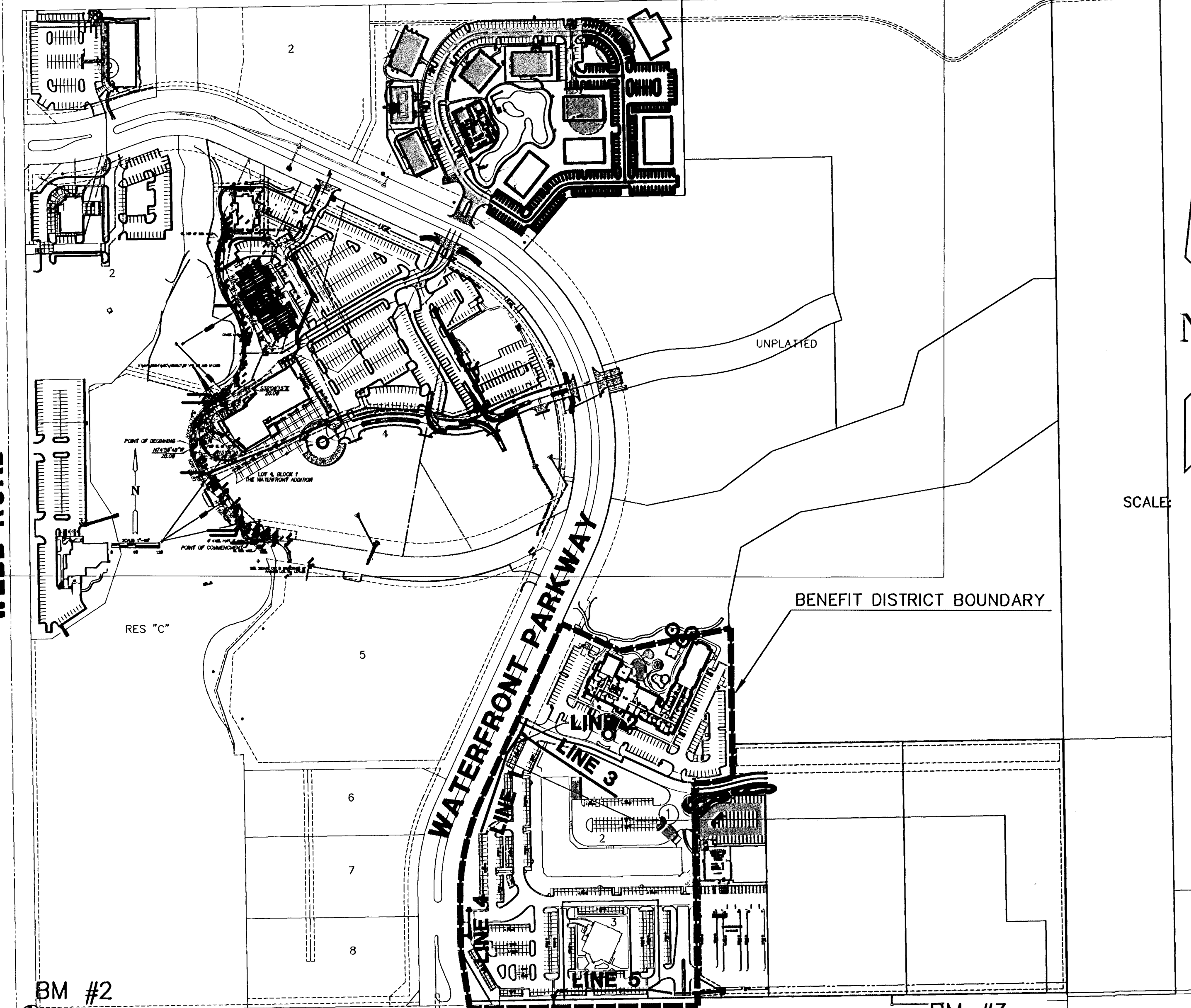
- BM #1 "□" S.E. COR. HDWL 44' NORTH AND 42' EAST OF WEST 1/4 CORNER SEC. 9, T27S, R2E  
ELEV. = 1380.13, NGVD  
192.73 (CITY DATUM)
- BM #2 "□" SW CORNER SIGNAL LIGHT POLE BASE NORTHEAST CORNER WEBB AND 13TH. STREET  
ELEV. = 1373.35, NGVD  
185.95 (CITY DATUM)
- BM #3 "□" SW CORNER RCB ON NORTH END OF WINGWALL ON RCB UNDER 13TH. STREET WEST OF SOUTH 1/4, SEC. 9, T27S, R2E  
ELEV. = 1377.32, NGVD  
189.92 (CITY DATUM)

NW COR., SW 1/4 SEC. 9,  
T27S, R2E, 6TH. P.M.  
FND. 3" PIPE IN THIMBLE  
N 1697040.78  
E 1680966.54

BM #1

NE COR., SW 1/4 SEC. 9,  
T27S, R2E, 6TH. P.M.  
FND. 3" PIPE  
N 1697089.81  
E 1683602.70

WEBB ROAD

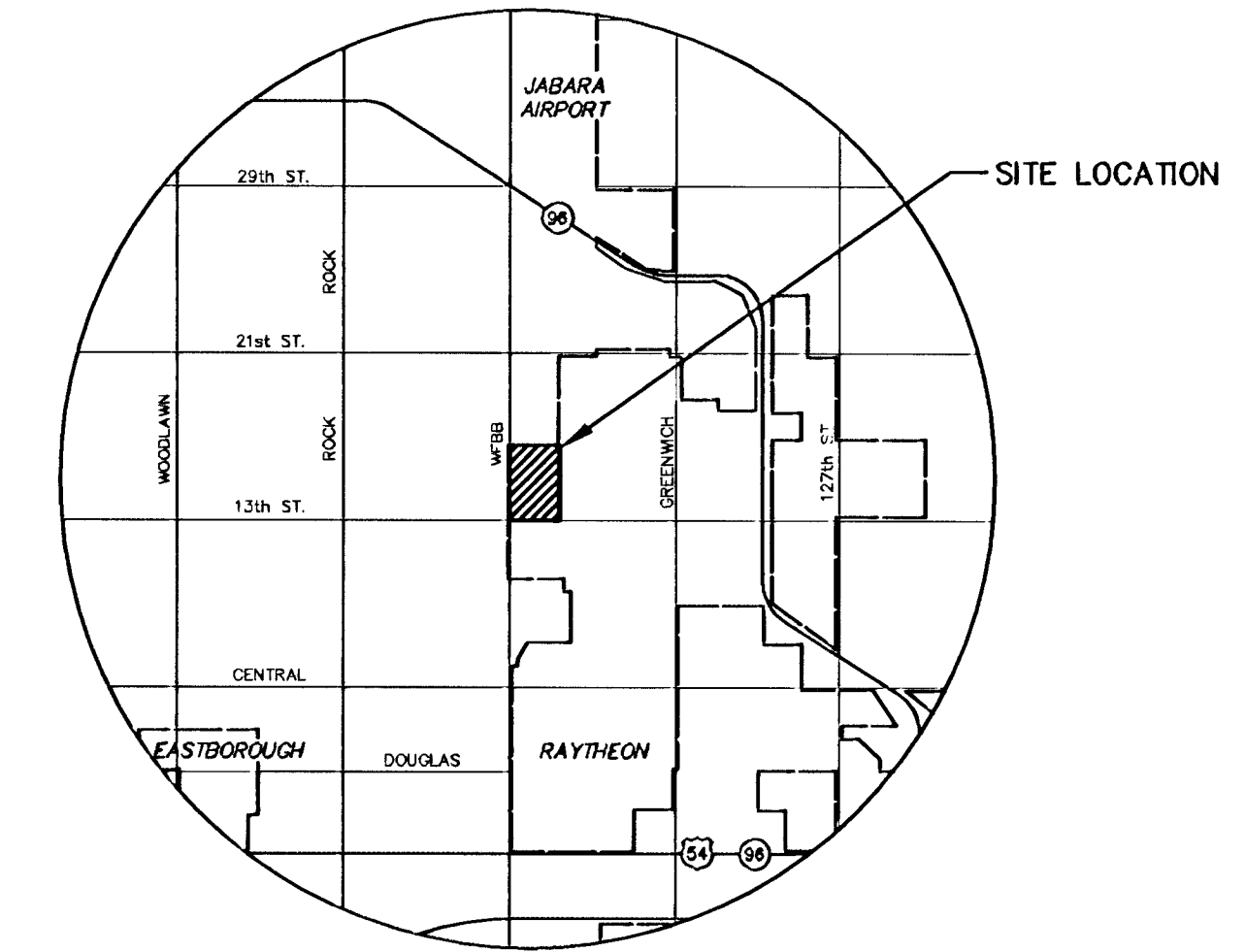


13TH. STREET NORTH

SW COR., SW 1/4 SEC. 9,  
T27S, R2E, 6TH. P.M.  
FND. CHISELED "X"  
N 1694383.24  
E 1681007.96

SE COR., SW 1/4 SEC. 9,  
T27S, R2E, 6TH. P.M.  
FND. 3" BAR W/GARBER I.D. CAP  
N 1694428.73  
E 1683649.66

H:\CIVIL\02014\DWG\RETAIL\swa\AS-BUILT\02014\_DT.dwg



LOCATION MAP

## INDEX TO DRAWINGS

SHEET NO.	DESCRIPTION
1	TITLE SHEET
2-6	MANHOLE / INLET DETAILS
7	SWS LINE 1 & 2
8	SWS LINE 3 & 4
9	SWS LINE 5
10-13	BMP DETAILS
14	FINAL PLAT

SCALE: 1" = 200'

APPROVED AS NOTED  
BY CITY ENGINEER OF WICHITA

STORM SEWERS

### NOTE TO CONTRACTOR

INSPECTION AND TESTING FOR THIS PROJECT IS TO BE PROVIDED BY A LICENSED CONSULTING ENGINEERING FIRM UNDER CONTRACT WITH THE OWNER/DEVELOPER. SAID INSPECTION TO BE IN ACCORDANCE WITH THE CITY OF WICHITA STANDARD CONSTRUCTION ENGINEERING PRACTICES AND CERTIFIED BY A LICENSED PROFESSIONAL ENGINEER. NO WORK SHALL BE PERFORMED IN DEDICATED EASEMENTS OR THE PUBLIC RIGHT-OF-WAY BY THE CONTRACTOR WITHOUT SUCH INSPECTION NOR SHALL ANY WORK BE COMMENCED IN DEDICATED EASEMENTS OR PUBLIC RIGHT-OF-WAY WITHOUT WRITTEN AUTHORIZATION BY THE CITY ENGINEER.

AS-BUILT: JUNE 2004



**LOTS 2 & 3, BLOCK 1  
WATERFRONT 2nd ADDITION**  
PROJECT NAME

**STORM WATER SEWER PLANS**  
SHEET TITLE

SRS	MKEC	G/A
DESIGN BY:	DRAWN BY:	CHECKED BY:
NOVEMBER 2003	02014	1 / 14
DATE	JOB NO.	SHEET/OF

411 N. WEBB ROAD  
WICHITA, KS. 67204  
316-684-9600