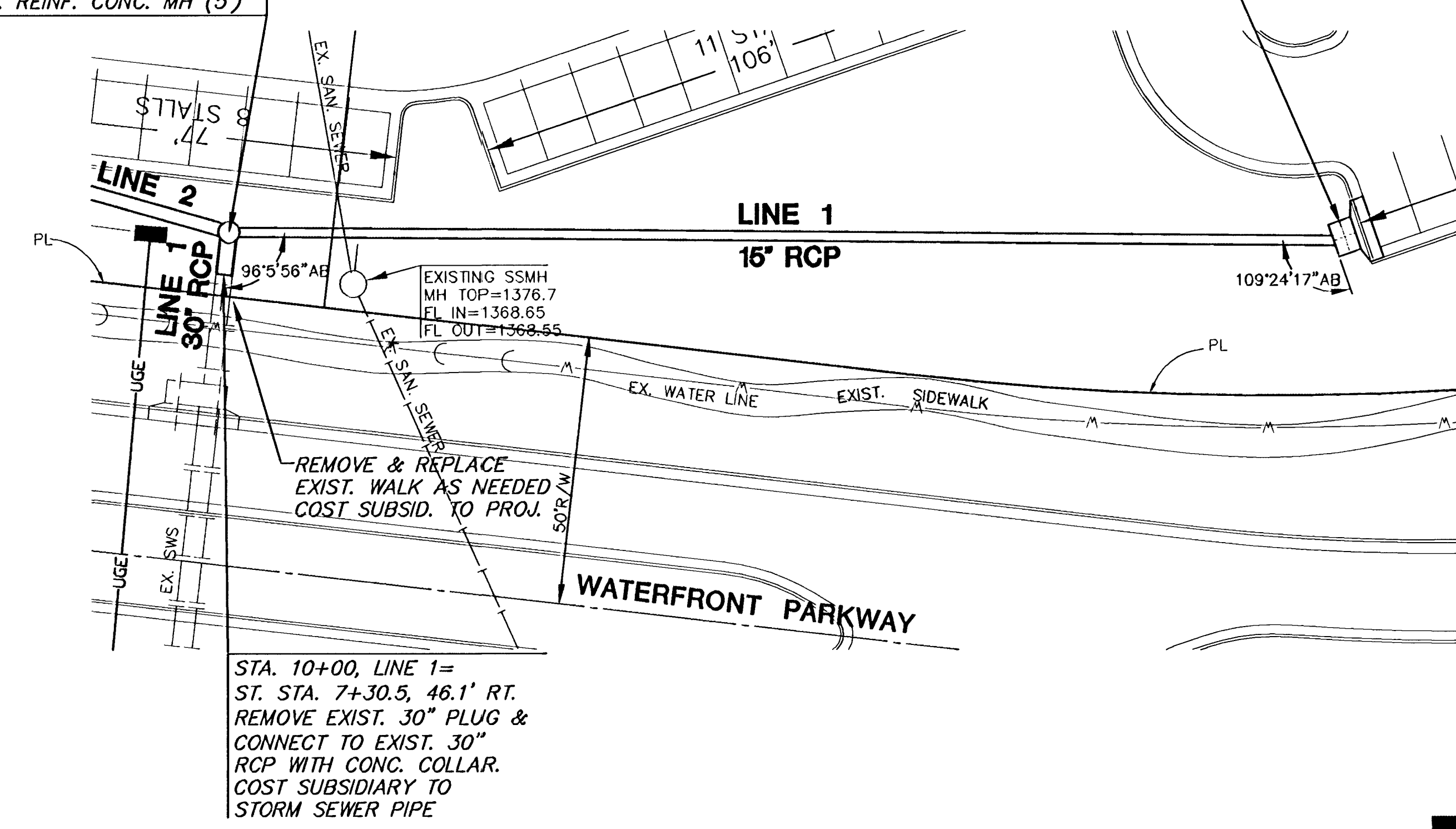


STA. 10+08, LINE 1=
STA. 20+00, LINE 2=
ST. STA. 7+31.70, 54' RT.
CONST. REINF. CONC. MH (5')

STA. 12+17.0, LINE 1=
ST. STA. 5+58.69, 100.3' RT.
CONST. TYPE 1A CURB INLET
(5'x3')
PROVIDE SEDIMENT BARRIER

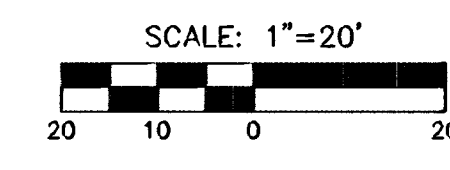
THE WATERFRONT SECOND ADD.



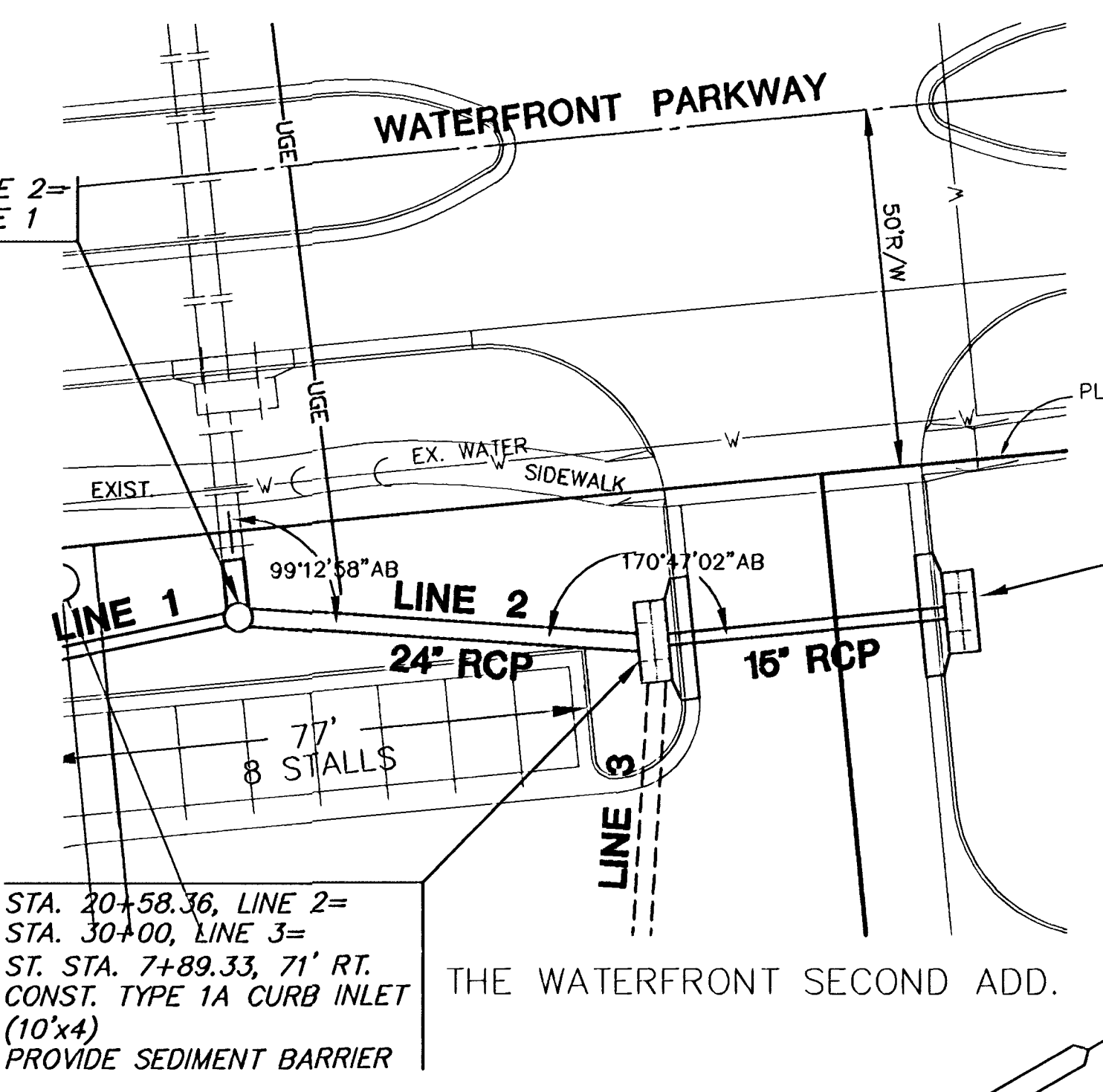
STA. 10+00, LINE 1=
ST. STA. 7+30.5, 46.1' RT.
REMOVE EXIST. 30\"/>

CONTRACTOR TO VERIFY
LOCATION & ELEVATION OF
EXISTING LINE PRIOR TO
CONSTRUCTION

PLAN LINE 1



STA. 20+00, LINE 2=
STA. 10+08, LINE 1



STA. 21+01.66, LINE 2=
ST. STA. 8+32.67, 71' RT.
CONST. TYPE 1A CURB INLET
(10'x3')
PROVIDE SEDIMENT BARRIER

STA. 20+58.36, LINE 2=
STA. 30+00, LINE 3=
ST. STA. 7+89.33, 71' RT.
CONST. TYPE 1A CURB INLET
(10'x4)
PROVIDE SEDIMENT BARRIER

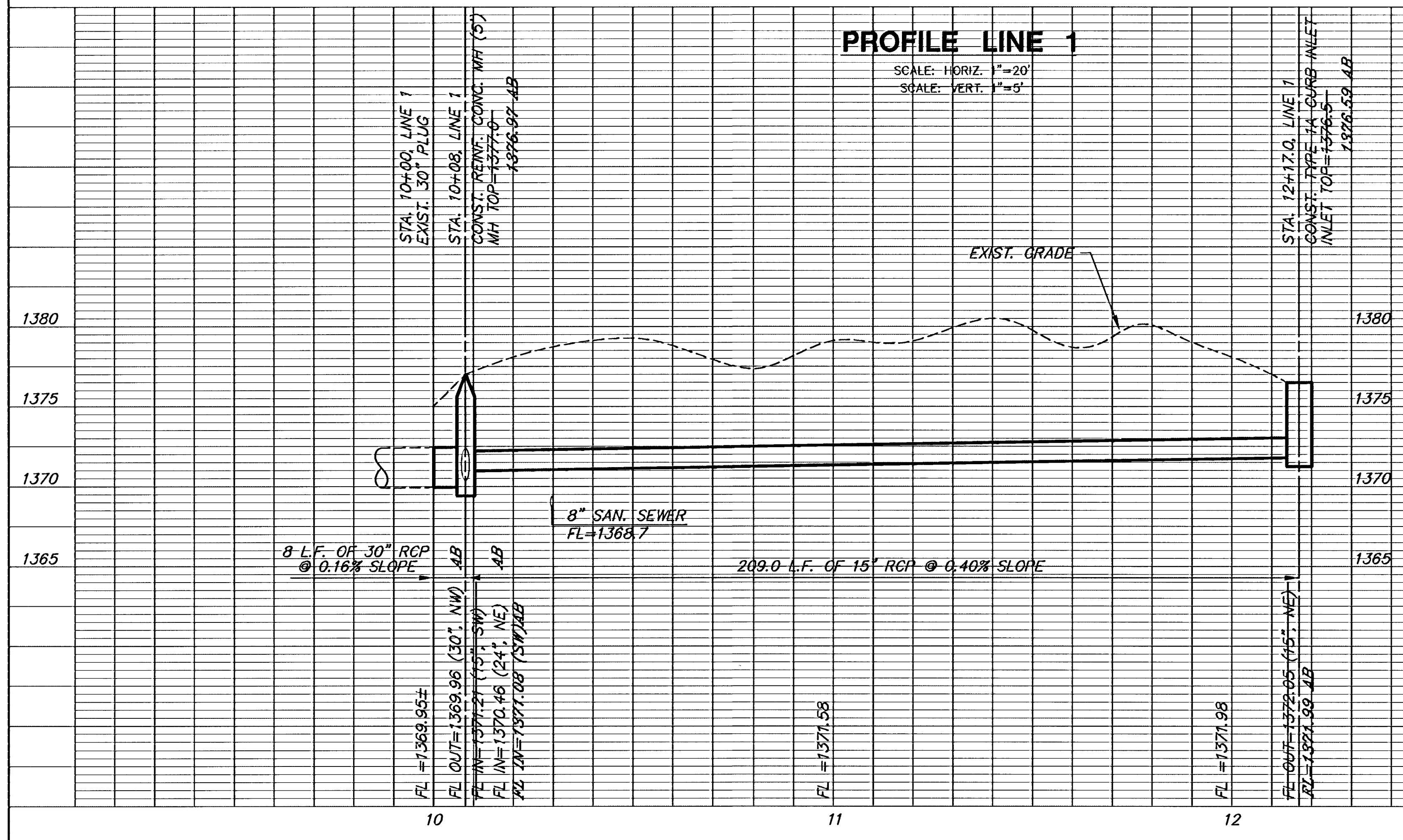
THE WATERFRONT SECOND ADD.

PLAN LINE 2

AS-BUILT: JUNE 2004

PROFILE LINE 1

SCALE: HORIZ. 1"=20'
SCALE: VERT. 1"=5'



PROFILE LINE 2

SCALE: HORIZ. 1"=20'
SCALE: VERT. 1"=5'

