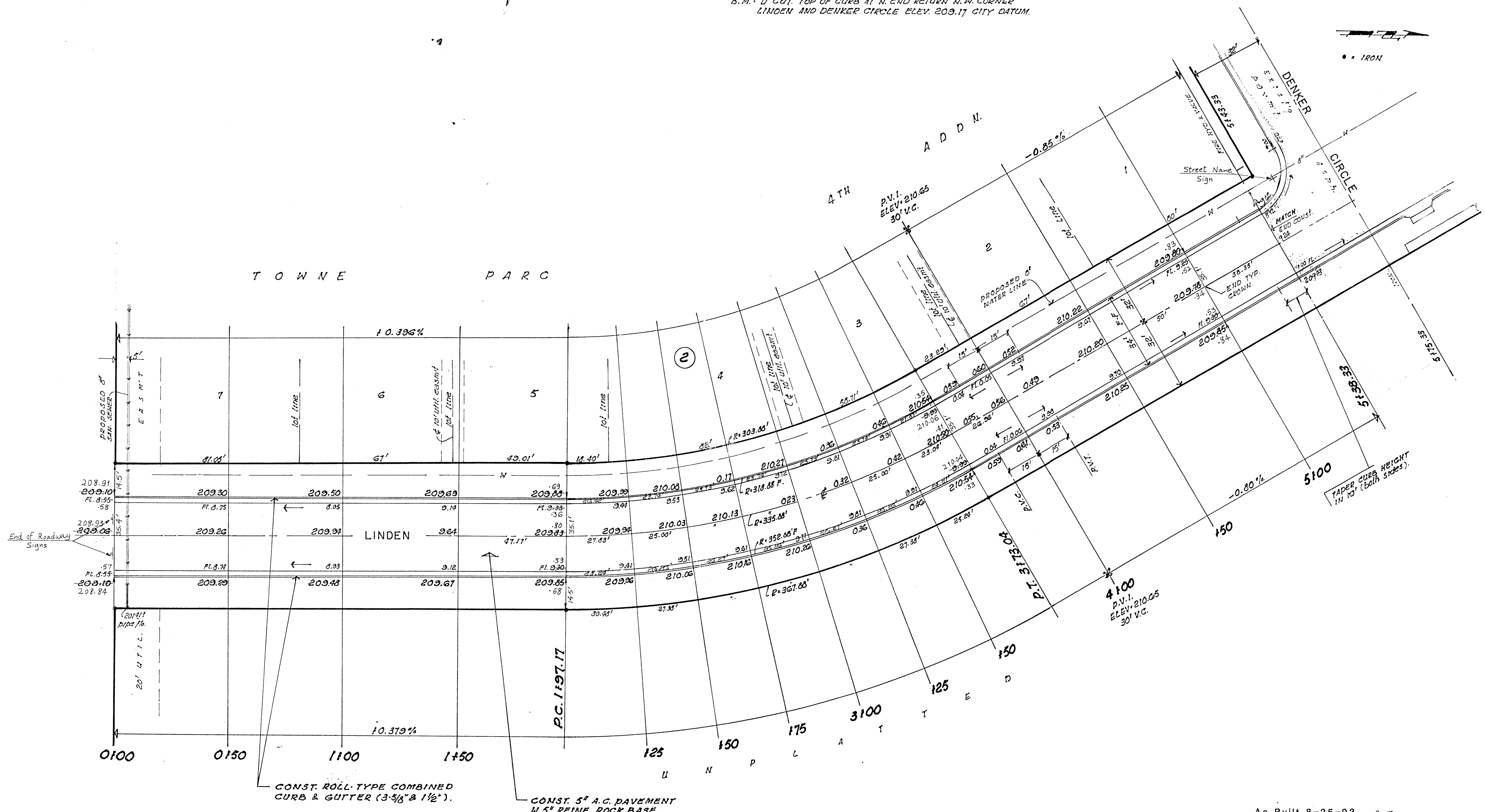
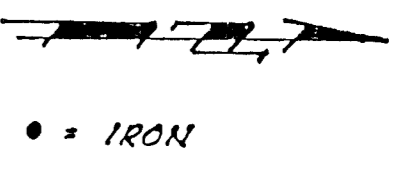


B.M. "D" CUT, TOP OF CURB AT N. END RETURN N.W. CORNER  
LINDEN AND DENKER CIRCLE ELEV. 209.17 CITY DATUM.



ARC = 175.87' TAN = 90.00' DEFL = 5.1175 MIN/FL ARC.  
CURVE DATA BASED ON CENTER LINE RADIUS 335.88' Δ = 30°

STATION	ARC.	8' O.S. FG. LT CB "CHORD"	8' O.S. FG. RT. CB "CHORD"	DEFL.	TOTAL DEFLECTION
P.C. 1197.17					0° 00' 00"
2125	27.83'	25.75'	29.89'	2° 22' 25"	2° 22' 25"
150	25.00'	23.13'	26.85'	2° 07' 56"	4° 30' 21"
175	"	"	"	"	6° 38' 17"
3100	"	"	"	"	8° 46' 13"
125	"	"	"	"	10° 54' 09"
150	25.00'	23.13'	26.85'	2° 07' 56"	13° 02' 05"
P.T. 3173.04	23.04'	21.32'	24.75'	1° 57' 55"	15° 00' 00"

EARTHWORK.  
EXCAVATION: 2327.6 cu. yds

As Built 8-25-93 A-Z.

TOWNE PARC 4TH ADDITION  
STREET PAVEMENT PLAN

**BAUGHMAN COMPANY P. A.**  
ENGINEERING & SURVEYING  
316/262-7271 • 315 ELLIS • WICHITA, KANSAS 67211

PROJECT NUMBER  
**078 PPP (607879)**

DESIGN: \_\_\_\_\_ DRAWN: \_\_\_\_\_ UTIL. CHECK'D: \_\_\_\_\_ DATE: \_\_\_\_\_ SCALE: 1" = 20' SHEET 4 OF 7