

STREET WITH INCIDENTAL SWS IMPROVEMENTS

to serve

THE FAIRMONT - PHASE II

Boxthorn, from the north line of Lot 10, Block C south and east to the west line of Wawona
Mainsgate, from the south line of Lot 9, Block C north to the south line of Lot 7, Block C
Ayesbury, from the east line of Boxthorn, east to the northwest line of Lot 10, Block E
Boxthorn Ct., from the southwest line of Boxthorn west to and including the cul-de-sac
Ayesbury Ct., from the northeast line of Ayesbury, northeast and east to and including the cul-de-sac.

CITY OF WICHITA, KANSAS

Michael E. Lindebak, P.E. City Engineer

Project Number

472-83484

O.C.A. Number:

756808

GENERAL NOTES:

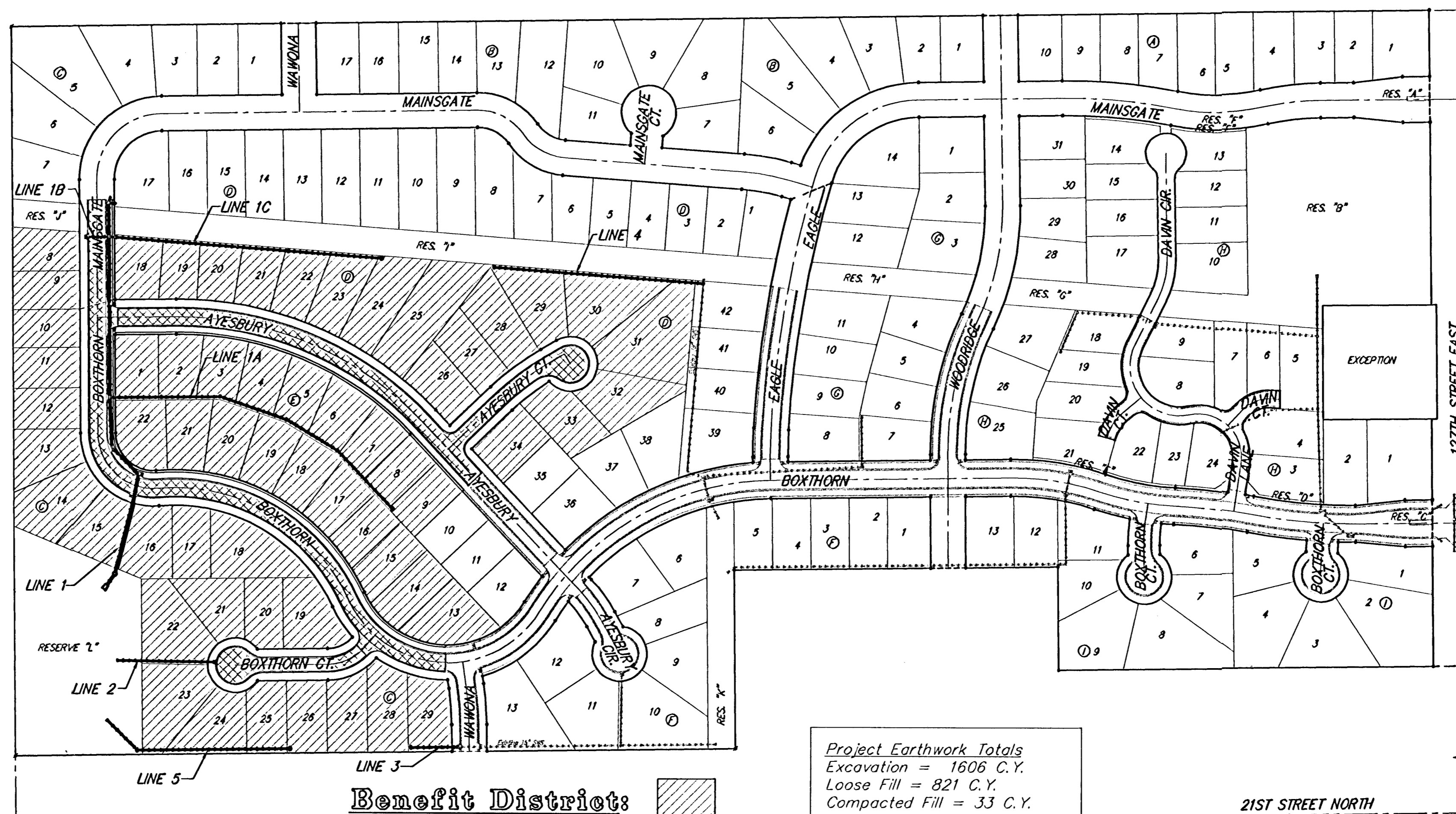
- Contractor will be required to provide notice to utility companies a minimum of twenty-four (24) hours prior to any excavation, as follows:

Kansas One-Call 687-2470

The Contractor must notify the following in case of an emergency:

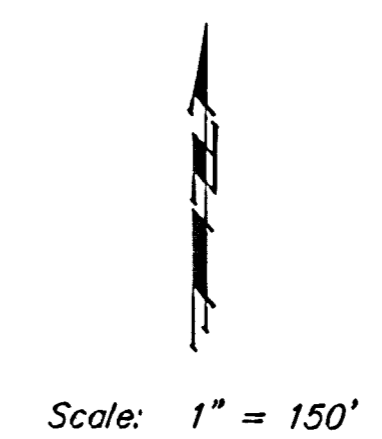
Cox Communications 262-4270
 Kansas Gas Service 1-888-482-4950
 Westar Energy 383-8650
 Aquila Energy 1-888-482-4950
 Southwestern Bell 268-2245
 City of Wichita Water Dept. 268-4363
 City of Wichita Sewer Maint. 268-4024
 City of Wichita Storm Sewer Maint. 268-4090
 City of Wichita Traffic Maint. 268-4034
 Conoco Pipeline Co. 1-800-231-2551
 Williams Pipeline Co. 529-6600
 Phillips Pipeline Co. 1-800-766-8230

- Utility service lines, poles, valve boxes, meters, and etcetera are to be adjusted as necessary by others prior to construction unless the plans specifically call for their adjustment by the Contractor or unless the plans specifically identify a utility to be adjusted by its owner during construction. Existing utilities and their location, as shown on the plans, represent the best information obtainable for design. The contractor will be required to work around existing utilities within the right-of-way which do not conflict with proposed construction.
- Trees and shrubs in public right-of-way which are in direct conflict with proposed new construction shall be removed by the Contractor with the Engineer's approval. Trees and shrubs which are not in direct conflict with proposed new construction shall be saved and protected from damage.
- All areas disturbed by construction shall be seeded at 300 lbs./acre with Rye Grass immediately following construction in that area. Contractor shall prepare ground per City specifications.
- Rubble from the removal of miscellaneous structures and excess excavation which is to be wasted shall be disposed of on sites to be provided by the Contractor. These sites shall be approved by the Engineer as to suitability, appearance and site location. Locations that, in the opinion of the Engineer, will leave an unsightly appearance will not be approved. All disposal sites must be approved by the Kansas Department of Health and Environment. Material either stockpiled or disposed of in a flood plain would a Kansas State Board of Agriculture permit. Any material dumped in waters of the United States or wetlands is subject to U.S. Corps. of Engineers permitting regulations. Any material buried or stockpiled beyond approved construction limits would require additional archaeological investigations unless buried in a previously approved borrow location.
- The Contractor shall be responsible for preserving property irons. The Contractor will be required to re-establish any property irons which are damaged or destroyed by his construction operations. Such irons shall be re-established by a licensed land surveyor in accordance with state law.
- A saw cut of at least one-half the depth of existing surface courses of one-fourth the depth of the existing total pavement thickness shall be provided at locations where proposed construction abuts as existing surface course or pavement for which partial removal of that surface or pavement is required. Sawed joint to facilitate removal within three (3) feet of existing joints will not be permitted and for such instances the limits of removal shall extend to the existing joint. Such saw cuts will not be paid for directly and this cost shall be considered as subsidiary to the removal of the surface or pavement.



Benefit District: [Hatched Box]
Proposed Streets: [Cross-hatched Box]

Project Earthwork Totals
 Excavation = 1606 C.Y.
 Loose Fill = 821 C.Y.
 Compacted Fill = 33 C.Y.
Total Project Length
 2,582 L.F. = 0.49 Miles



Benchmarks

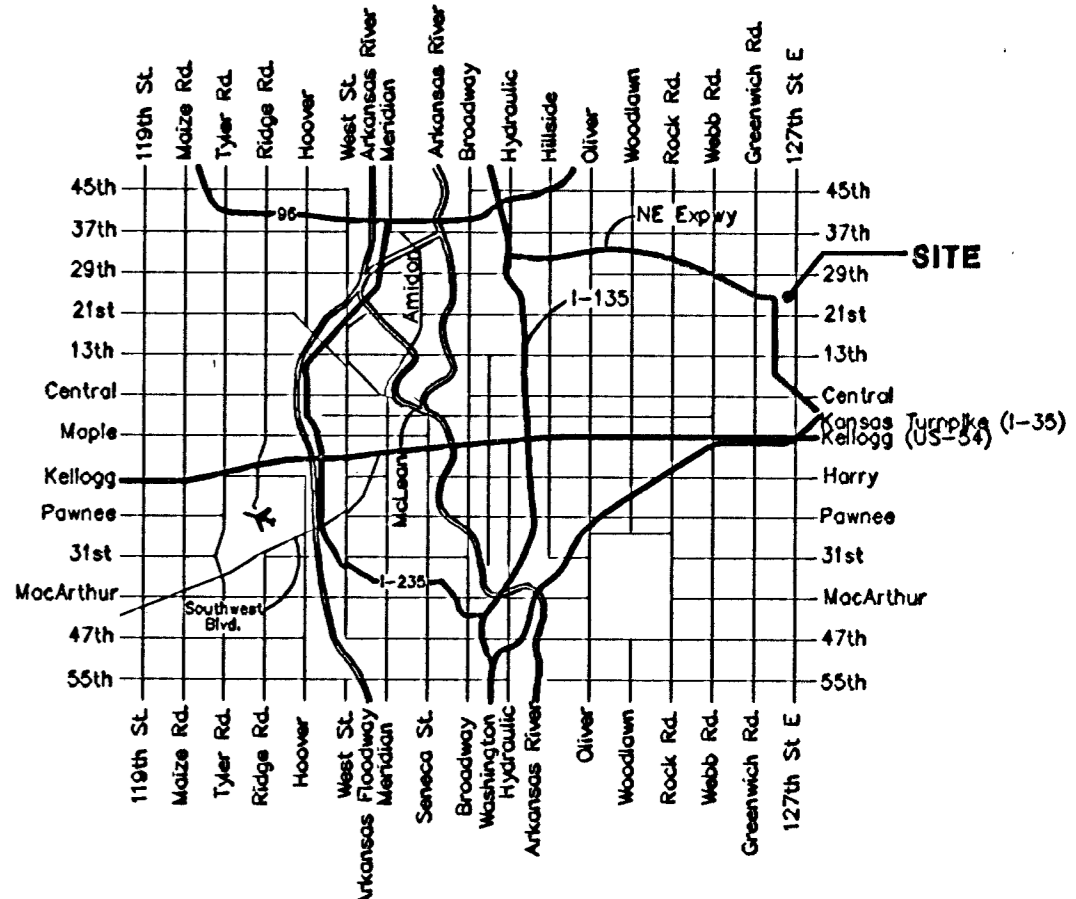
BM #1: "□" Cut on T.C., 12' west of east end of N curb return on the north drive entrance of the Church of the Magdalen.
 Elev. = 190.48 (City Datum)

BM #2: RR spike on the west face of PP on the east side of 127th Street East, adjacent to the south line of The Fairmont Addition.
 Elev. = 187.25 (City Datum)

BM #3: RR spike on the east face of PP on the west side of 127th Street East, 37' N and 13' E of the NE corner of Lot 1, Block H, The Fairmont Addition.
 Elev. = 189.19 (City Datum)

Sheet Index

Title Sheet	1
35' Pavement Detail	2
29' Pavement Detail	3
Sign Detail	4
Miscellaneous Details	5
Boxthorn	6-9
Boxthorn Ct.	10
Ayesbury	11-12
Ayesbury Ct.	13
SWS Line 1	14
SWS Lines 1 & 1B	15
SWS Line 1A	16
SWS Line 1C	17
SWS Line 2	18
SWS Line 3	19
SWS Line 4	20
SWS Line 5	21
Std. Type 1A Single Inlet Detail	22
Std. Type 1A Double Inlet Detail	23
Std. Shallow Manhole Detail	24
Special Yard Inlet Detail	25
Manhole Ring & Cover Detail	26
RC Headwall Detail	27
Soil Erosion BMPs	28-29
Street X-Sections	30-38
Copy of Plat	39



Vicinity Map



BAUGHMAN COMPANY P.A.
 ENGINEERING, SURVEYING, & PLANNING
 316-282-7271 • 315 ELLIS • WICHITA, KANSAS 67211