

BENCHMARKS:

BM #1: "□" Cut on T.C., 12' west of east end of N curb return on the north drive entrance of the Church of the Magdalen.

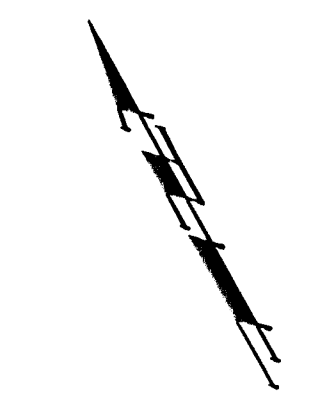
Elev. = 190.48 (City Datum)

BM #2: RR spike on the west face of PP on the east side of 127th Street East, adjacent to the south line of The Fairmont Addition.

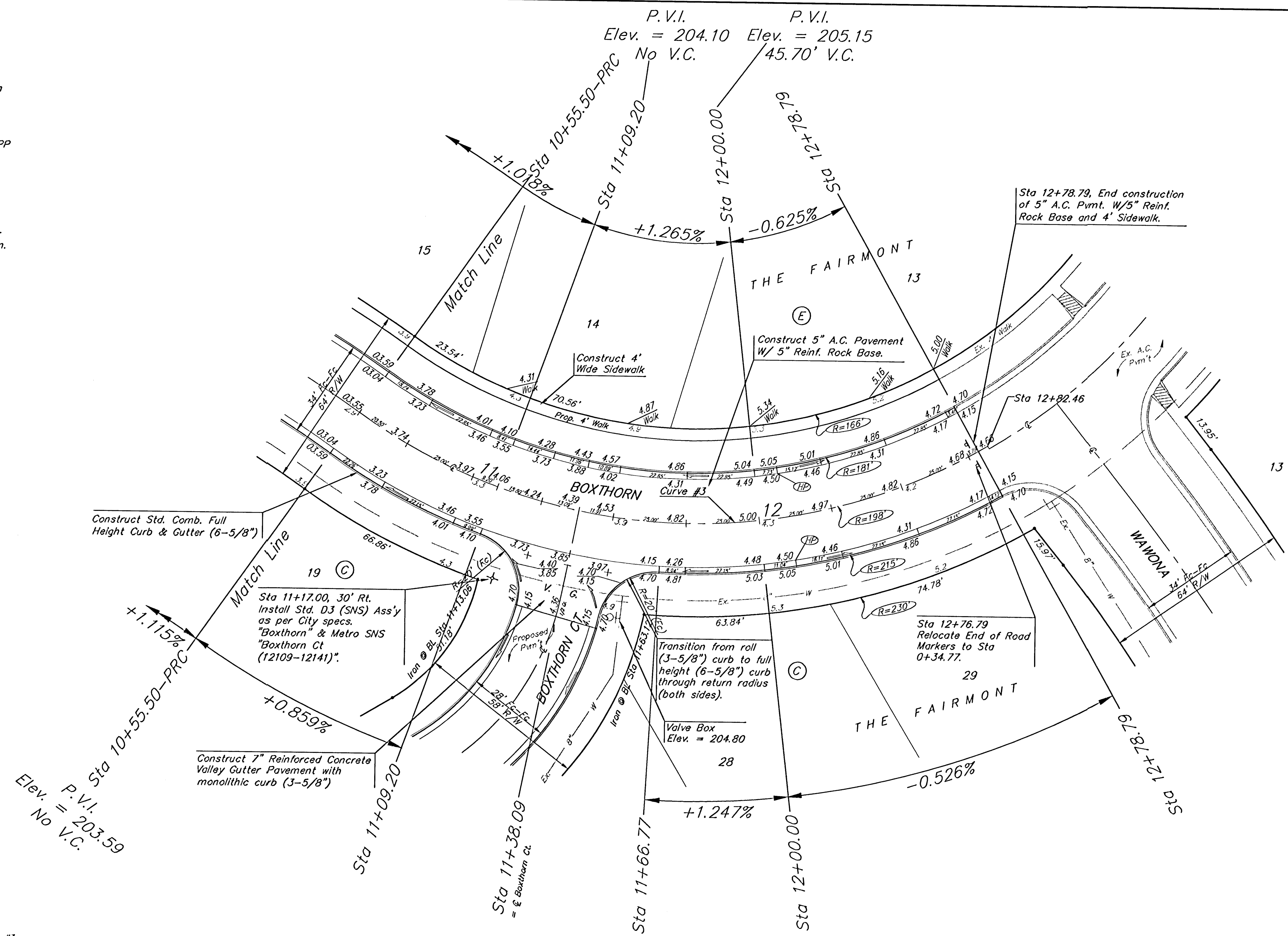
Elev. = 187.25 (City Datum)

BM #3: RR spike on the east face of PP on the west side of 127th Street East, 37' N and 13' E of the NE corner of Lot 1, Block H, The Fairmont Addition.

Elev. = 189.19 (City Datum)



Scale: 1" = 20'
• = Iron



Curve #3
Curve Data Based on Centerline
Rad. = 198' Delta = 65° 40' 29" Tangent = 127.79'
Arc = 226.96' L.C. = 214.73' Def/Ft. = 8.68101 Min.

Station	Arc	FACE CHORD LENGTHS		Defl.	T. Defl.
		8' Lt.	8' Rt.		
10+55.50	-	-	-	0°00'00"	0°00'00"
10+75.00	19.50'	17.03'	21.95'	2°49'17"	2°49'17"
11+00.00	25.00'	21.83'	28.14'	3°37'01"	6°26'18"
11+09.20	9.20'	8.04'	10.36'	1°19'52"	7°46'10"
11+25.00	15.80'	13.80'	17.79'	2°17'09"	10°03'20"
11+38.09	13.09'	11.43'	14.74'	1°53'58"	11°56'58"
11+50.00	11.91'	10.40'	13.41'	1°43'23"	13°40'21"
11+66.77	16.77'	14.65'	18.88'	2°25'35"	16°05'56"
11+75.00	8.23'	7.19'	9.27'	1°11'26"	17°17'23"
12+00.00	25.00'	21.83'	28.14'	3°37'01"	20°54'24"
12+25.00	25.00'	21.83'	28.14'	3°37'01"	24°31'26"
12+50.00	25.00'	21.83'	28.14'	3°37'01"	28°08'27"
12+75.00	25.00'	21.83'	28.14'	3°37'01"	31°45'29"
12+78.79	3.79'	3.31'	4.27'	0°32'54"	32°18'23"
12+82.46	3.67'	3.21'	4.13'	0°31'51"	32°50'14"

THE FAIRMONT - PHASE 2
BOXTHORN
STA 10+55.50 TO STA 12+78.79

BAUGHMAN COMPANY P.A.
ENGINEERING, SURVEYING, & PLANNING
315-262-7271 • 315 ELLIS • WICHITA, KANSAS 67211

PROJECT NUMBER
472-83484

DESIGN: NBW | DRAWN: TMS | APPROVED: [Signature] | DATE: 7/23/03 | SCALE: Noted

SHEET **9** OF **39**