

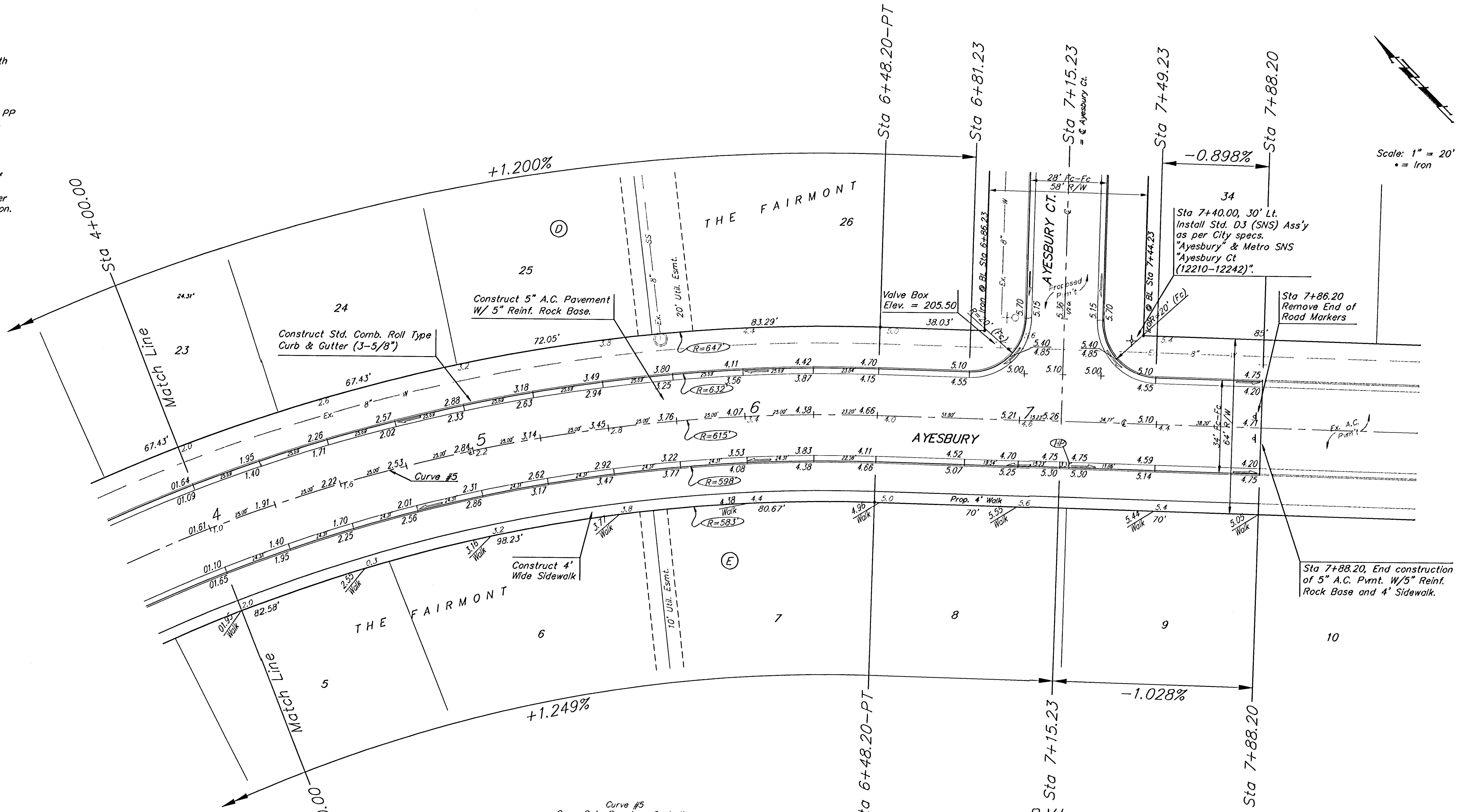
BENCHMARKS:

BM #1: "X" Cut on T.C., 12' west of east end of N curb return on the north drive entrance of the Church of the Magdalen.
Elev. = 190.48 (City Datum)

BM #2: RR spike on the west face of PP on the east side of 127th Street East, adjacent to the south line of The Fairmont Addition.
Elev. = 187.25 (City Datum)

BM #3: RR spike on the east face of PP on the west side of 127th Street East, 37' N and 13' E of the NE corner of Lot 1, Block H, The Fairmont Addition.
Elev. = 189.19 (City Datum)

Scale: 1" = 20'
• = Iron



Curve #5
Curve Data Based on Centerline
Rad. = 615' Delta = 46° 59' 45" Tangent = 267.38'
Arc = 504.44' L.C. = 490.42' Del./ft. = 2.79493 Min.

Station	Arc	FACE CHORD LENGTHS		Defl.	T. Defl.
		B' Lt.	B' Rt.		
1+43.76	-	-	-	0'00"00"	0'00"00"
1+50.00	6.24'	6.49'	5.99'	0'17"26"	0'17"26"
1+75.00	25.00'	26.01'	23.98'	1'09"52"	1'27"19"
2+00.00	25.00'	26.01'	23.98'	1'09"52"	2'37"11"
2+25.00	25.00'	26.01'	23.98'	1'09"52"	3'47"03"
2+50.00	25.00'	26.01'	23.98'	1'09"52"	4'56"56"
2+75.00	25.00'	26.01'	23.98'	1'09"52"	6'06"48"
3+00.00	25.00'	26.01'	23.98'	1'09"52"	7'16"41"
3+25.00	25.00'	26.01'	23.98'	1'09"52"	8'26"33"
3+50.00	25.00'	26.01'	23.98'	1'09"52"	9'36"25"
3+75.00	25.00'	26.01'	23.98'	1'09"52"	10'46'18"
4+00.00	25.00'	26.01'	23.98'	1'09"52"	11'56"10"
4+25.00	25.00'	26.01'	23.98'	1'09"52"	13'06"03"
4+50.00	25.00'	26.01'	23.98'	1'09"52"	14'15'55"
4+75.00	25.00'	26.01'	23.98'	1'09"52"	15'25'47"
5+00.00	25.00'	26.01'	23.98'	1'09"52"	16'35'40"
5+25.00	25.00'	26.01'	23.98'	1'09"52"	17'45'32"
5+50.00	25.00'	26.01'	23.98'	1'09"52"	18'55'25"
5+75.00	25.00'	26.01'	23.98'	1'09"52"	20'05'17"
6+00.00	25.00'	26.01'	23.98'	1'09"52"	21'15'09"
6+25.00	25.00'	26.01'	23.98'	1'09"52"	22'25'02"
6+48.20	23.20'	24.14'	22.26'	1'04'50"	23'29'52"

P.V.I.
Elev. = 205.50
69.54' V.C.

NOTE: ROLL TYPE CURB & GUTTER TO BE CONSTRUCTED ON THE PAVEMENT SHOWN ON THIS SHEET. TOP OF CURB ELEVATIONS ARE GIVEN FOR FULL HEIGHT CURB.

THE FAIRMONT - PHASE 2
AYESBURY
STA 4+00.00 TO STA 7+88.20

BAUGHMAN COMPANY P.A.
ENGINEERING, SURVEYING, & PLANNING
315-262-7271 • 315 ELLIS • WICHITA, KANSAS 67211

PROJECT NUMBER
472-83484

DESIGN: NBW DRAWN: TMS APPROVED: DATE: 7/23/03 SCALE: Noted

SHEET **12** OF **39**