

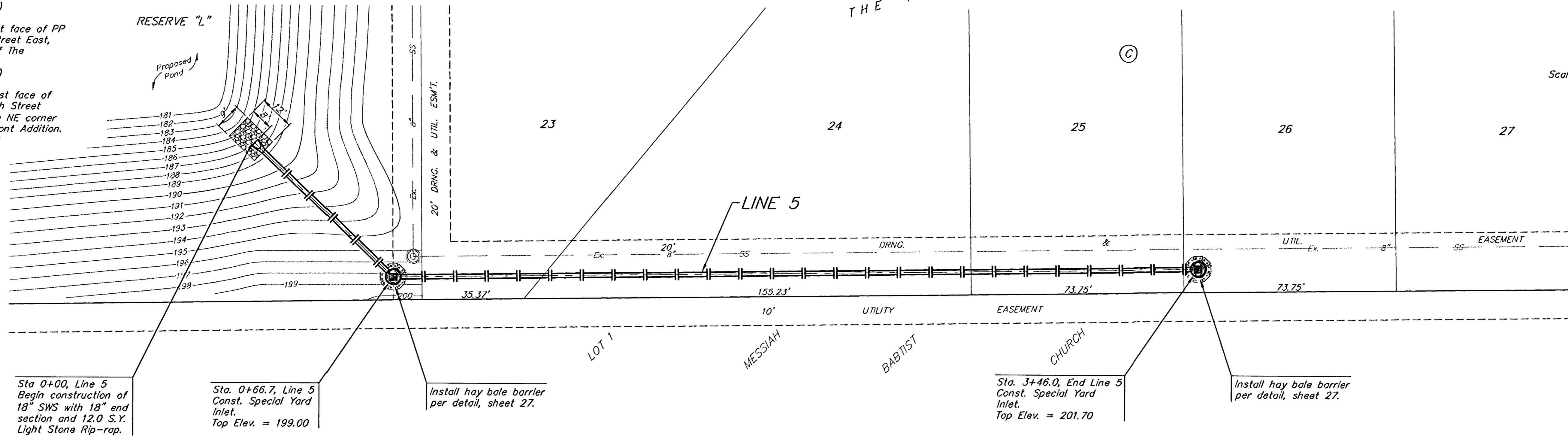
BENCHMARKS:

BM #1: " " Cut on T.C., 12' west of east end of N curb return on the north drive entrance of the Church of the Magdalen.
Elev. = 190.48 (City Datum)

BM #2: RR spike on the west face of PP on the east side of 127th Street East, adjacent to the south line of The Fairmont Addition.
Elev. = 187.25 (City Datum)

BM #3: RR spike on the east face of PP on the west side of 127th Street East, 37' N and 13' E of the NE corner of Lot 1, Block H, The Fairmont Addition.
Elev. = 189.19 (City Datum)

Static WS Elev. = 189.60
100-yr WS elev. = 193.50
Bottom Elev. = 181.00



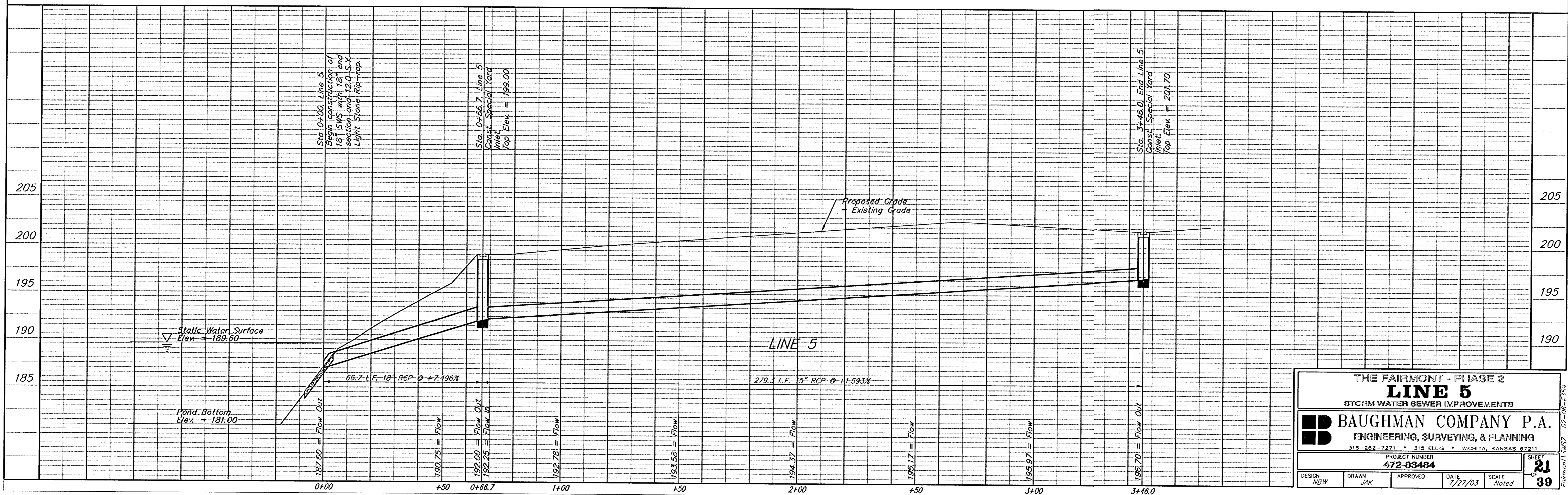
Sta 0+00, Line 5
Begin construction of 18" SWS with 18" end section and 12.0 S.Y. Light Stone Rip-rap.

Sta. 0+66.7, Line 5
Const. Special Yard Inlet.
Top Elev. = 199.00

Install hay bale barrier per detail, sheet 27.

Sta. 3+46.0, End Line 5
Const. Special Yard Inlet.
Top Elev. = 201.70

Install hay bale barrier per detail, sheet 27.



THE FAIRMONT - PHASE 2
LINE 5
STORM WATER SEWER IMPROVEMENTS

BAUGHMAN COMPANY P.A.
ENGINEERING, SURVEYING, & PLANNING
318-202-7271 • 315 ELLIS • WICHITA, KANSAS 67211

PROJECT NUMBER
472-03484

DESIGN: NBW DRAWN: JAK APPROVED: DATE: 7/27/03 SCALE: Noted

SHEET 21 OF 39

Fairmont SWK 02-06-F-159