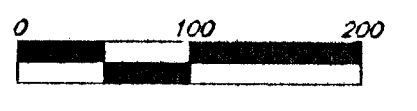
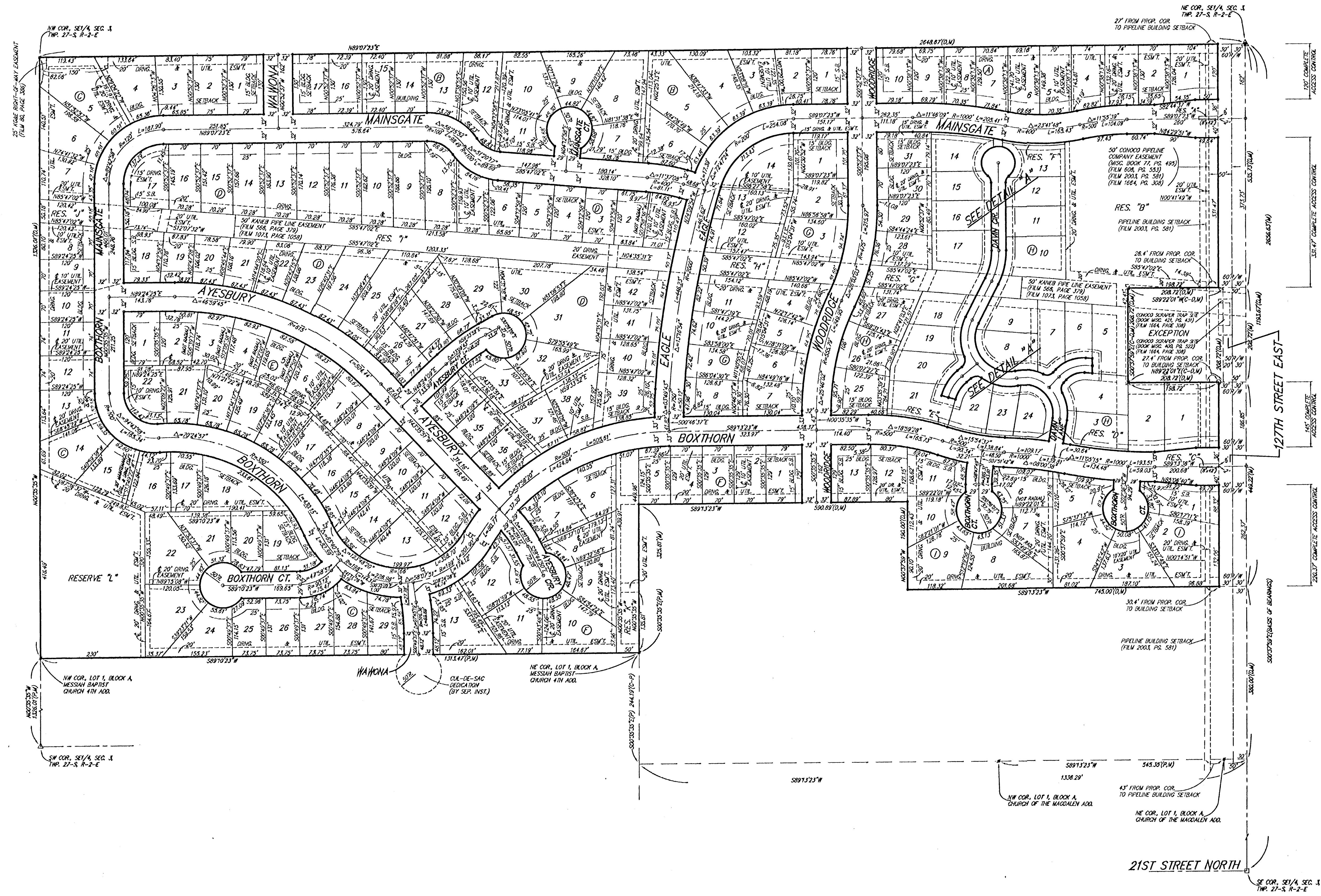


THE FAIRMONT

AN ADDITION TO WICHITA, SEDGWICK COUNTY, KANSAS



- = #4 REBAR W/ "BAUGHMAN" CAP (SET)
 - = #4 REBAR W/ "BAUGHMAN" CAP (FOUND)
 - = #4 REBAR W/ "TOROY" CAP (FOUND)
 - △ = #4 REBAR OVER STONE (FOUND)
 - △ = #4 NOTCH (SET)
 - = #2 STEEL BRACE POST (FOUND)
 - × = #4 REBAR W/ "SPD" CAP (FOUND)
- (M) = MEASURED
 (P) = PLATTED
 (D) = DESCRIBED
 (C-1) = CALCULATED PER DESCRIBED INFO
 (C-2) = CALCULATED PER PLATTED INFO

MINIMUM BUILDING PAD ELEVATIONS FOR LOWEST OPENING TO THE STRUCTURES			
LOT(S)	BLOCK	ELEVATION	
		CITY DATUM	NGVD29
14,15,16,22,23	C	198.5	1381.9
5-10	F	198.5	1383.9
5-7, 9-13	H	198.0	1373.4

BENCHMARK
 GREENWICH AND 21ST NORTH
 CITY OF WICHITA BENCHMARK DDC
 41' SOUTH AND 58' WEST OF IRON CTR. LINE BOTH
 12.0' SW OF ASPHALT, 14.2' EAST OF FACE P.P.
 12.0' WEST OF FACE P.P.
 ELEVATION = 173.98 (CITY DATUM), 1381.38 NGVD

COUNTY "C" CUT, SOUTH HEADWALL,
 1/2 MILE WEST OF 12TH ST. EAST
 ON 12TH STREET NORTH
 ELEV. = 195.93 (CITY DATUM), 1373.23 NGVD

TOP OF IRON - SE COR., SE 1/4, SEC. 3,
 TWP. 27-S, R-2-E, (12TH ST. EAST &
 21ST ST. NORTH)
 ELEV. = 198.01 (CITY DATUM), 1385.41 NGVD

NOTE:
 A master grading plan for drainage has been developed for this subdivision and is on file with the City of Wichita, Kansas. All drainage easements, right-of-way, or reserves shall remain of established grades or as modified with the approval of the City Engineer of the City of Wichita, Kansas. No obstructions which impede the flow of this drainage system be allowed.