

**BENCHMARKS:**  
 BM #1: RAILROAD SPIKE IN WEST FACE OF SAWED OFF POST, 25.6' W. & 1.0' S. OF NORTHWEST CORNER OF LOT 16, BLOCK A.  
 ELEV. = 1333.59 NAVD88

BM #2: TOP OF FENCE POST WITHOUT TOP CAP, 0.6' W. & 0.7' N. OF POINT OF CURVATURE IN NORTH LINE OF LOT 9, BLOCK A.  
 ELEV. = 1337.55 NAVD88

Street & Station	Location Description	Elevation
Hoover Ct. 7+27.02, 20.25' Rt.	Adjacent to Fire Hydrant near common front lot corner to Lots 3 & 4, Block A, Hoover Ind. 2nd Add.	

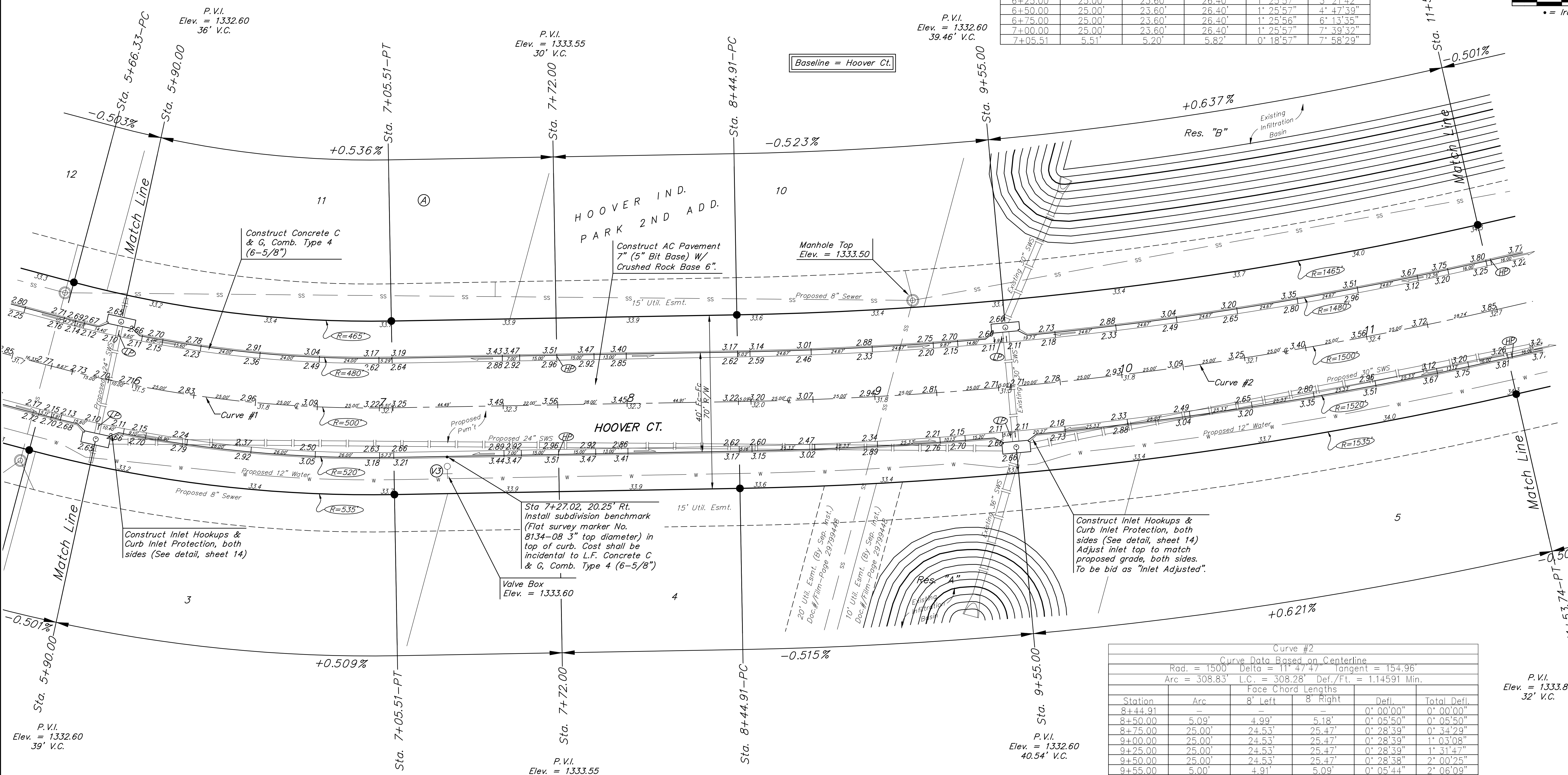
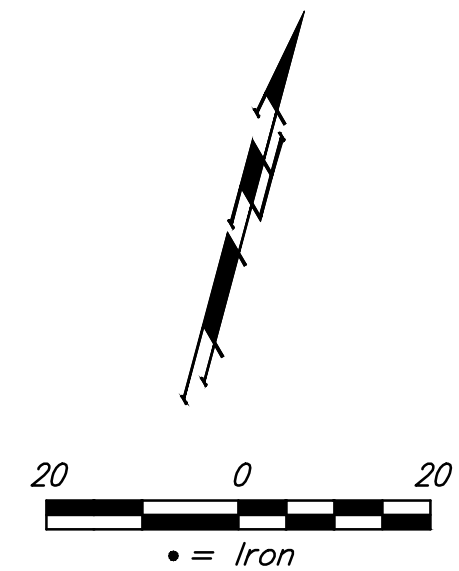
**WATER VALVE LOCATION TABLE**

VALVE NUMBER	STREET	BASELINE STATION	OFFSET DISTANCE	OFFSET DIRECTION
V3	Hoover Ct.	7+27.02	20.25'	Rt.

Paving contractor will be responsible to operate all water valves on the project, in the presence of the inspector, to ensure accessibility to the valves, and that all valves (except blowoffs) are left in the "ON" position when the project is completed.

Curve #1					
Curve Data Based on Centerline					
Rad. = 500'		Delta = 15° 56' 57"		Tangent = 70.04'	
Arc = 139.18'		L.C. = 138.73'		Def./Ft. = 3.43781 Min.	
Face Chord Lengths					
Station	Arc	8' Left	8' Right	Defl.	Total Defl.
5+66.53	-	-	-	0' 00' 00"	0' 00' 00"
5+75.00	8.67'	8.18'	9.16'	0' 29' 48"	0' 29' 48"
5+90.00	15.00'	14.16'	15.84'	0' 51' 34"	1' 21' 22"
6+00.00	10.00'	9.44'	10.56'	0' 34' 23"	1' 55' 45"
6+25.00	25.00'	23.60'	26.40'	1' 25' 57"	3' 21' 42"
6+50.00	25.00'	23.60'	26.40'	1' 25' 57"	4' 47' 39"
6+75.00	25.00'	23.60'	26.40'	1' 25' 56"	6' 13' 35"
7+00.00	25.00'	23.60'	26.40'	1' 25' 57"	7' 39' 32"
7+05.51	5.51'	5.20'	5.82'	0' 18' 57"	7' 58' 29"

P.V.I. Elev. = 1333.85  
 32' V.C.



Curve #2					
Curve Data Based on Centerline					
Rad. = 1500'		Delta = 11° 47' 47"		Tangent = 154.96'	
Arc = 308.83'		L.C. = 308.28'		Def./Ft. = 1.14591 Min.	
Face Chord Lengths					
Station	Arc	8' Left	8' Right	Defl.	Total Defl.
8+44.91	-	-	-	0' 00' 00"	0' 00' 00"
8+50.00	5.09'	4.99'	5.18'	0' 05' 50"	0' 05' 50"
8+75.00	25.00'	24.53'	25.47'	0' 28' 39"	0' 34' 29"
9+00.00	25.00'	24.53'	25.47'	0' 28' 39"	1' 03' 08"
9+25.00	25.00'	24.53'	25.47'	0' 28' 39"	1' 31' 47"
9+50.00	25.00'	24.53'	25.47'	0' 28' 38"	2' 00' 25"
9+55.00	5.00'	4.91'	5.09'	0' 05' 44"	2' 06' 09"
9+75.00	20.00'	19.63'	20.37'	0' 22' 55"	2' 29' 04"
10+00.00	25.00'	24.53'	25.47'	0' 28' 39"	2' 57' 43"
10+25.00	25.00'	24.53'	25.47'	0' 28' 39"	3' 26' 22"
10+50.00	25.00'	24.53'	25.47'	0' 28' 39"	3' 55' 01"
10+75.00	25.00'	24.53'	25.47'	0' 28' 39"	4' 23' 40"
11+00.00	25.00'	24.53'	25.47'	0' 28' 39"	4' 52' 19"
11+25.00	25.00'	24.53'	25.47'	0' 28' 38"	5' 20' 57"
11+50.00	25.00'	24.53'	25.47'	0' 28' 39"	5' 49' 36"
11+53.74	3.74'	3.67'	3.81'	0' 04' 17"	5' 53' 53"

P.V.I. Elev. = 1333.85  
 32' V.C.