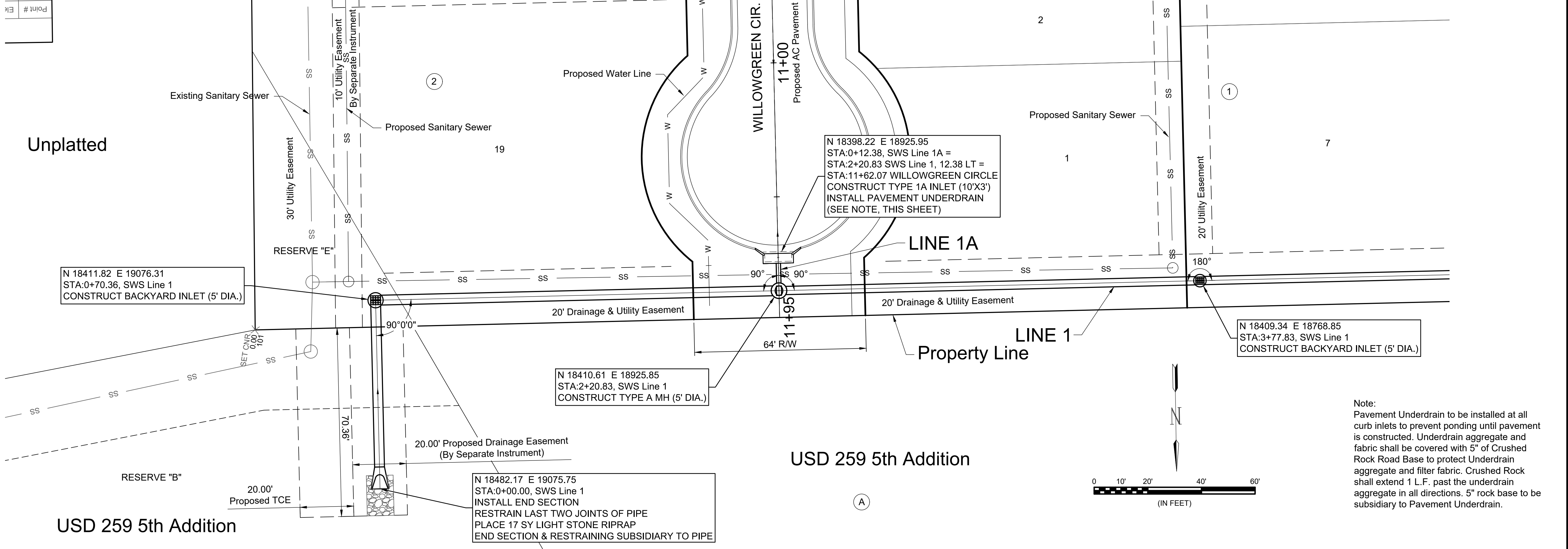


Point #
Elev



USD 259 5th Addition

USD 259 5th Addition

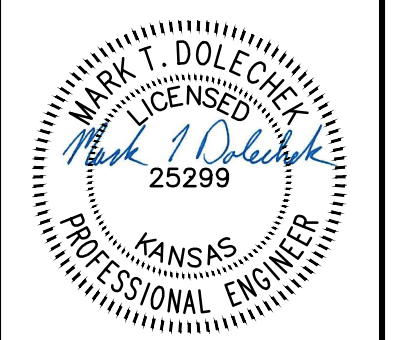


Note:
Pavement Underdrain to be installed at all curb inlets to prevent ponding until pavement is constructed. Underdrain aggregate and fabric shall be covered with 5" of Crushed Rock Road Base to protect Underdrain aggregate and filter fabric. Crushed Rock shall extend 1 L.F. past the underdrain aggregate in all directions. 5" rock base to be subsidiary to Pavement Underdrain.



© 2018 GARVER, LLC
THIS DOCUMENT, ALONG WITH THE IDEAS AND DESIGNS CONVEYED HEREIN, SHALL BE CONSIDERED INSTRUMENTS OF PROFESSIONAL SERVICE AND ARE PROPERTY OF GARVER, LLC. ANY USE, REPRODUCTION, OR DISTRIBUTION OF THIS DOCUMENT, ALONG WITH THE IDEAS AND DESIGN CONTAINED HEREIN, IS PROHIBITED UNLESS AUTHORIZED IN WRITING BY GARVER, LLC OR EXPLICITLY ALLOWED IN THE GOVERNING PROFESSIONAL SERVICES AGREEMENT FOR THIS WORK.

8535 E. 21st St. N.
Suite 130
Wichita, KS 67206
(316) 264-8008



Digitally Signed 11/29/2018

BY	DESCRIPTION	DATE

REV.	DATE	DESCRIPTION



CITY OF WICHITA
WICHITA, KANSAS
SIERRA HILLS 2nd ADD.
PHASE 4 - SWS

SWS Line 1 & 1A

JOB NO.: 18267013
DATE: NOV 2018
DESIGNED BY: MTD
DRAWN BY: CDJ

BAR IS ONE INCH ON ORIGINAL DRAWING
IF NOT ONE INCH ON THIS SHEET, ADJUST SCALES ACCORDINGLY.

DRAWING NUMBER

SHEET NUMBER **2** OF **19**

File: L:\2018\18267013 - Sierra Hills 2nd Phase 4\Drawings\C3D\SWS\Storm Sewer 1 - (1).dwg Last Save: 11/29/2018 1:54 PM Last saved by: MTDolechek
Last plotted by: Dolechek, Mark T. Plot Style: --- Plot Scale: 1:2.5849 Plot Date: 11/29/2018 7:59 AM Plotter used: None

