

STREET PAVING FOR BAYLEY & INCIDENTAL SWS IMPROVEMENTS

to serve

GRACE PARK ADDITION

Bayley, Rue, and Lynnrae Lane
from the east line of Bedford Ct. to the northeast
line of Bayley, including the cul-de-sac

CITY OF WICHITA, KANSAS

Neil Cable, P.E. City Engineer

Project Number

472-83798

O.C.A. Number:

765806

GENERAL NOTES:

- Contractor will be required to provide notice to utility companies a minimum of twenty-four (24) hours prior to any excavation, as follows:

Kansas One-Call 687-2470

The Contractor must notify the following in case of an emergency:

Cox Communications 262-4270
Kansas Gas Service 1-888-482-4950
Westar Energy 383-8650
Aquila Energy 1-800-303-0357
Southwestern Bell 268-2245
City of Wichita Water Dept. 268-4563
City of Wichita Sewer Maint. 268-4024
City of Wichita Storm Sewer Maint. 268-4090
City of Wichita Traffic Maint. 268-4034
Conoco Pipelines Co. 1-800-231-2551
Southern Star Pipeline Co. 529-6622
Phillips Pipeline Co. 1-800-766-8230

- Utility service lines, poles, valve boxes, meters, and etcetera are to be adjusted as necessary by others prior to construction unless the plans specifically call for their adjustment by the Contractor or unless the plans specifically identify a utility to be adjusted by its owner during construction. Existing utilities and their location, as shown on the plans, represent the best information obtainable for design. The contractor will be required to work around existing utilities within the right-of-way which do not conflict with proposed construction.
- Trees and shrubs in public right-of-way which are in direct conflict with proposed new construction shall be removed by the Contractor with the Engineer's approval. Trees and shrubs which are not in direct conflict with proposed new construction shall be saved and protected from damage.
- All areas disturbed by construction shall be seeded at 300 lbs./acre with Rya Grass immediately following construction in that area. Contractor shall prepare ground per City specifications.
- Rubble from the removal of miscellaneous structures and excess excavation which is to be wasted shall be disposed of on sites to be provided by the Contractor. These sites shall be approved by the Engineer as to suitability, appearance and site location. Locations that, in the opinion of the Engineer, will leave an unsightly appearance will not be approved. All disposal sites must be approved by the Kansas Department of Health and Environment. Material either stockpiled or disposed of in a flood plain would require a Kansas State Board of Agriculture permit. Any material dumped in waters of the United States or wetlands is subject to U.S. Corps. of Engineers permitting regulations. Any material buried or stockpiled beyond approved construction limits would require additional archaeological investigations unless buried in a previously approved borrow location.
- The Contractor shall be responsible for preserving property irons. The Contractor will be required to re-establish any property irons which are damaged or destroyed by his construction operations. Such irons shall be re-established by a licensed land surveyor in accordance with state law.
- A saw cut of at least one-half the depth of existing surface courses or one-fourth the depth of the existing total pavement thickness shall be provided at locations where proposed construction abuts an existing surface course or pavement for which partial removal of that surface or pavement is required. Sawed joint to facilitate removal within three (3) feet of existing joints will not be permitted and for such instances the limits of removal shall extend to the existing joint. Such saw cuts will not be paid for directly and this cost shall be considered as subsidiary to the removal of the surface or pavement.

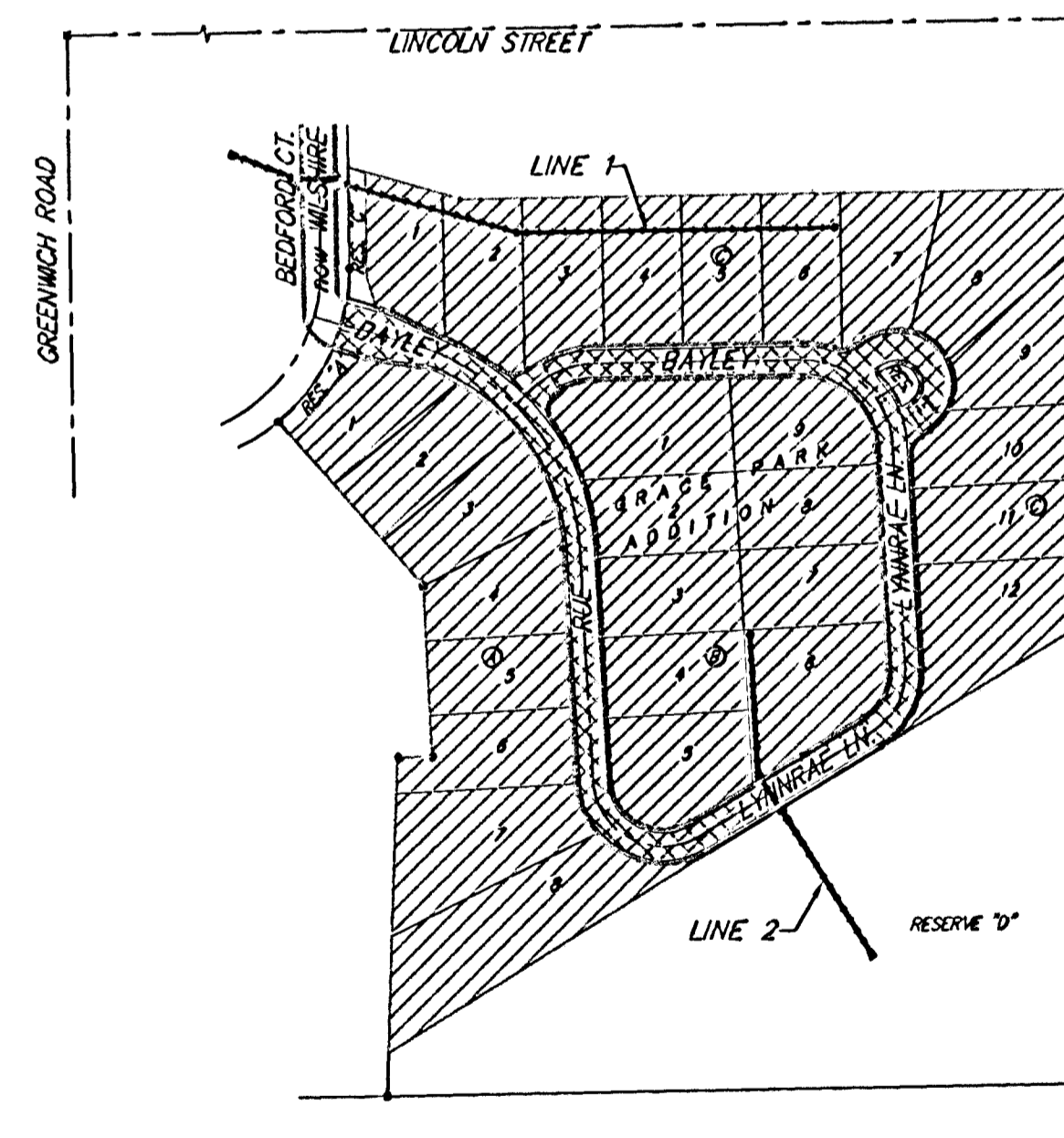
Benchmark

BM #1: Small RR spike in NW face of PP, 5.4' NW of the most westerly corner of Lot 1, Block A, Grace Park Addition.
Elev. = 158.64 City Datum

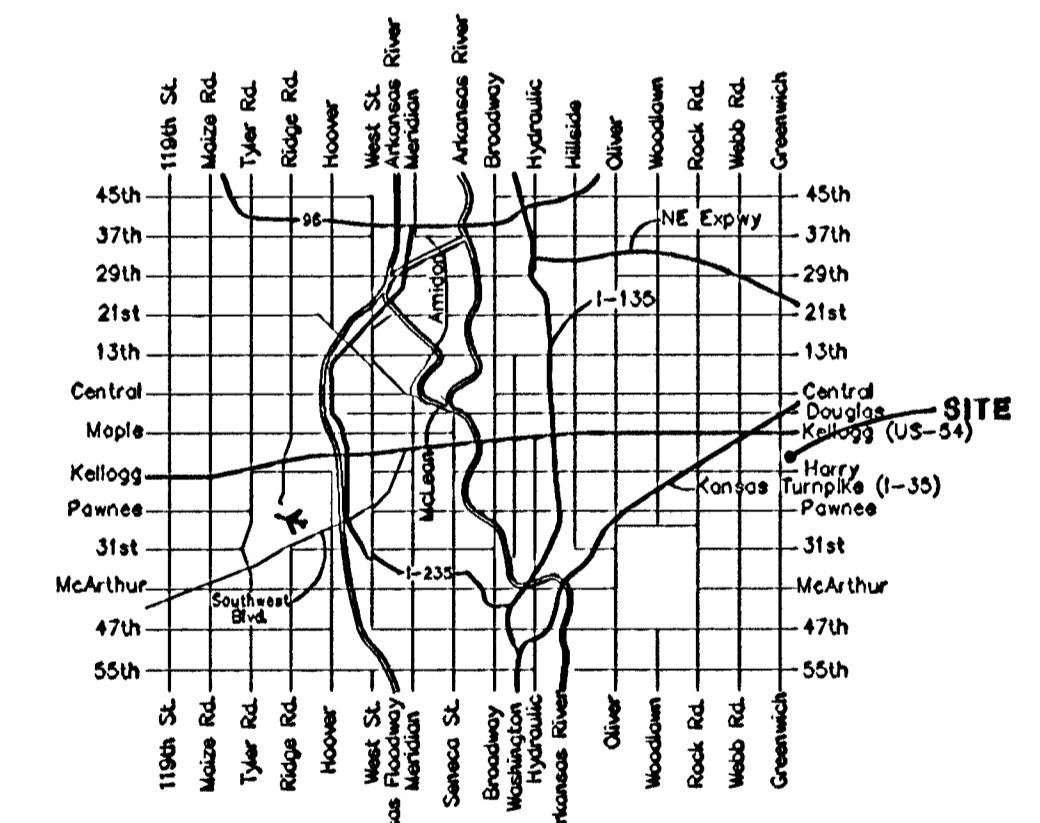
BM #2: "□" on top of curb SE corner of Res. "G", Cedarview Addition.
Elev. = 161.87 City Datum

Sheet Index

| | |
|----------------------------------|-------|
| Title Sheet | 1 |
| 29' Pavement Detail | 2 |
| Sign Detail | 3 |
| Miscellaneous Details | 4 |
| Wheelchair Ramp Details | 4B |
| Entrance Details | 5 |
| Bayley | 6 |
| Rue | 7 |
| Lynnrae Lane | 8-9 |
| Bayley | 10 |
| Line 1 | 11 |
| Line 2 | 12 |
| Std. Type 1A Single Inlet Detail | 13 |
| Std. Type 1A Double Inlet Detail | 14 |
| Std. Manhole Detail | 15 |
| Manhole Frame and Cover Detail | 15A |
| Special Yard Inlet Detail | 16 |
| Headwall Detail | 17 |
| Erosion Control BMPs | 18-19 |
| Mass Grading Plan | 20 |
| Pond Plan | 21 |
| Pond Cross Sections | 22-23 |
| Street X-Sections | 24-28 |
| Copy of Plat | 29 |



Scale: 1" = 150'

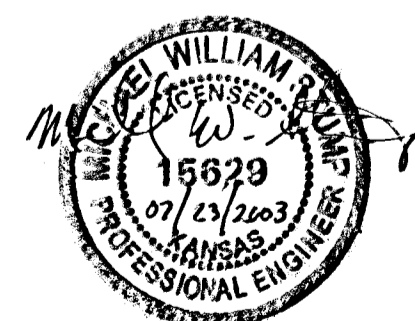


Vicinity Map

Project Earthwork Totals
Excavation = 12,447 C.Y.
Fill = 12,540 C.Y.
Total Project Length
1,469 L.F. = 0.28 Miles

Benefit District:

Proposed Streets:



July 2003

BAUGHMAN COMPANY P.A.
ENGINEERING, SURVEYING, & PLANNING
316-262-7271 • 315 ELLIS • WICHITA, KANSAS 67211