

Subdivision Bench Marks

No.	Street and Station	From CL	Description	Elevation
1	Tara Falls, Sta. 2+15.08	17.25' Lt.	Top of Curb at the South end of return of the Valley Gutter at the intersection of Tara Falls and Tara Falls Ct.	
2	Tara Falls, Sta. 6+17.86	17.25' Rt.	Top of Curb at the Northeast corner of the intersection of Tara Falls & Andrea. Top of Curb in front of Fire Hydrant.	

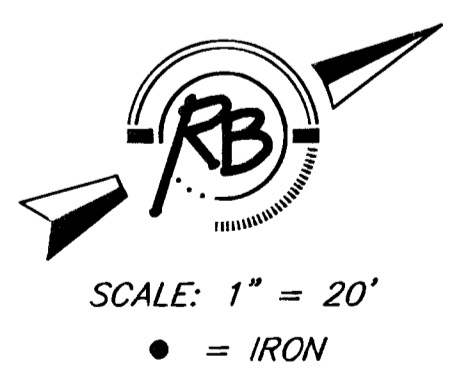
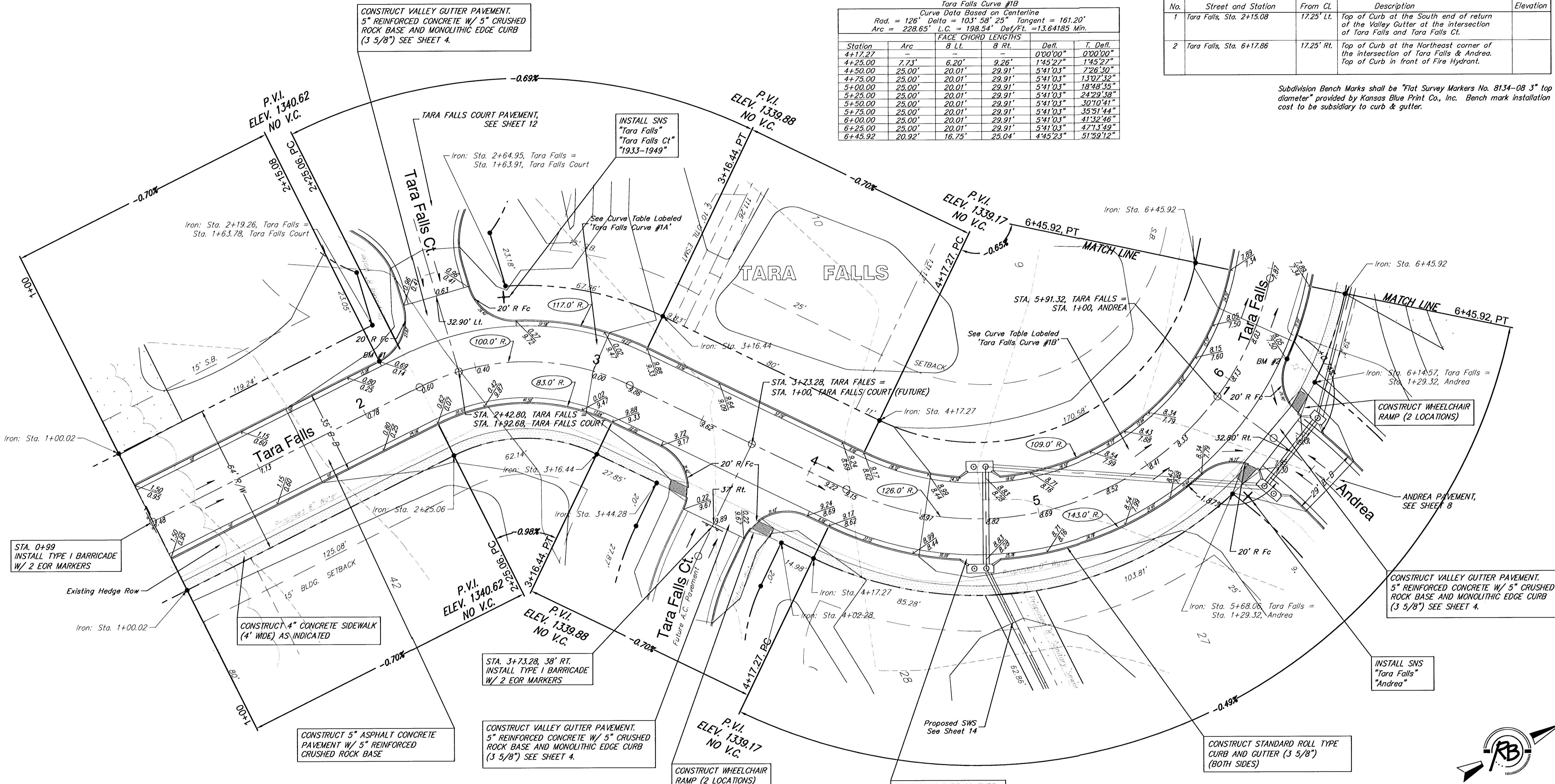
Subdivision Bench Marks shall be "Flat Survey Markers No. 8134-08 3" top diameter" provided by Kansas Blue Print Co., Inc. Bench mark installation cost to be subsidiary to curb & gutter.

Tara Falls Curve #1B  
Curve Data Based on Centerline  
Rad. = 126' Delta = 103° 58' 25" Tangent = 161.20'  
Arc = 228.65' L.C. = 198.54' Def/Ft. = 13.64185 Min.

Station	Arc	FACE CHORD LENGTHS		Defl.	T. Defl.
		8 Lt.	8 Rt.		
4+17.27	-	-	-	0'00"00"	0'00"00"
4+25.00	7.73'	6.20'	9.26'	1'45"27"	1'45"27"
4+50.00	25.00'	20.01'	29.91'	5'41"03"	7'26"30"
4+75.00	25.00'	20.01'	29.91'	5'41"03"	13'07"32"
5+00.00	25.00'	20.01'	29.91'	5'41"03"	18'48"35"
5+25.00	25.00'	20.01'	29.91'	5'41"03"	24'29"38"
5+50.00	25.00'	20.01'	29.91'	5'41"03"	30'10"41"
5+75.00	25.00'	20.01'	29.91'	5'41"03"	35'51"44"
6+00.00	25.00'	20.01'	29.91'	5'41"03"	41'32'46"
6+25.00	25.00'	20.01'	29.91'	5'41"03"	47'13'49"
6+45.92	20.92'	16.75'	25.04'	4'45"23"	51'59"12"

Tara Falls Curve #1A  
Curve Data Based on Centerline  
Rad. = 100' Delta = 52° 21' 26" Tangent = 49.16'  
Arc = 91.38' L.C. = 88.23' Def/Ft. = 17.18885 Min.

Station	Arc	FACE CHORD LENGTHS		Defl.	T. Defl.
		8 Lt.	8 Rt.		
2+25.06	-	-	-	0'00"00"	0'00"00"
2+50.00	24.94'	31.09'	18.66'	7'08"41"	7'08"41"
2+75.00	25.00'	31.17'	18.70'	7'09"43"	14'18"24"
3+00.00	25.00'	31.17'	18.70'	7'09"43"	21'28"08"
3+16.44	16.44'	20.53'	12.32'	4'42"35"	26'10"43"



TRIM OR REMOVE TREES ONLY AS NECESSARY FOR CONSTRUCTION. SUBSIDIARY TO BID ITEM 'SITE CLEARING AND RESTORATION'.

NOTE: ROLL TYPE CURB AND GUTTER TO BE CONSTRUCTED ALONG PAVEMENT DEPICTED ON THIS SHEET

REVISED

Tara Falls - Phase 3 Paving  
Tara Falls - Sta. 1+00 to Sta. 6+45.92  
WICHITA, KANSAS

Ruggles & Bohm, P.A.  
Engineering, Surveying, Land Planning

924 North Main  
Wichita, Kansas 67203  
www.rbkansas.com

(316) 264-8008  
(316) 264-4621 fax  
E-mail: info@rbkansas.com

DESIGN: MWS  
DRAWN: MWS  
REVIEW: MWS  
UTILITY: MWS  
DATE: 02/26/03

DRAWING FILE: Phase 3 Pav...Paving.dwg  
PROJECT NUMBER: 472-83648

SHEET: 5 OF 35