

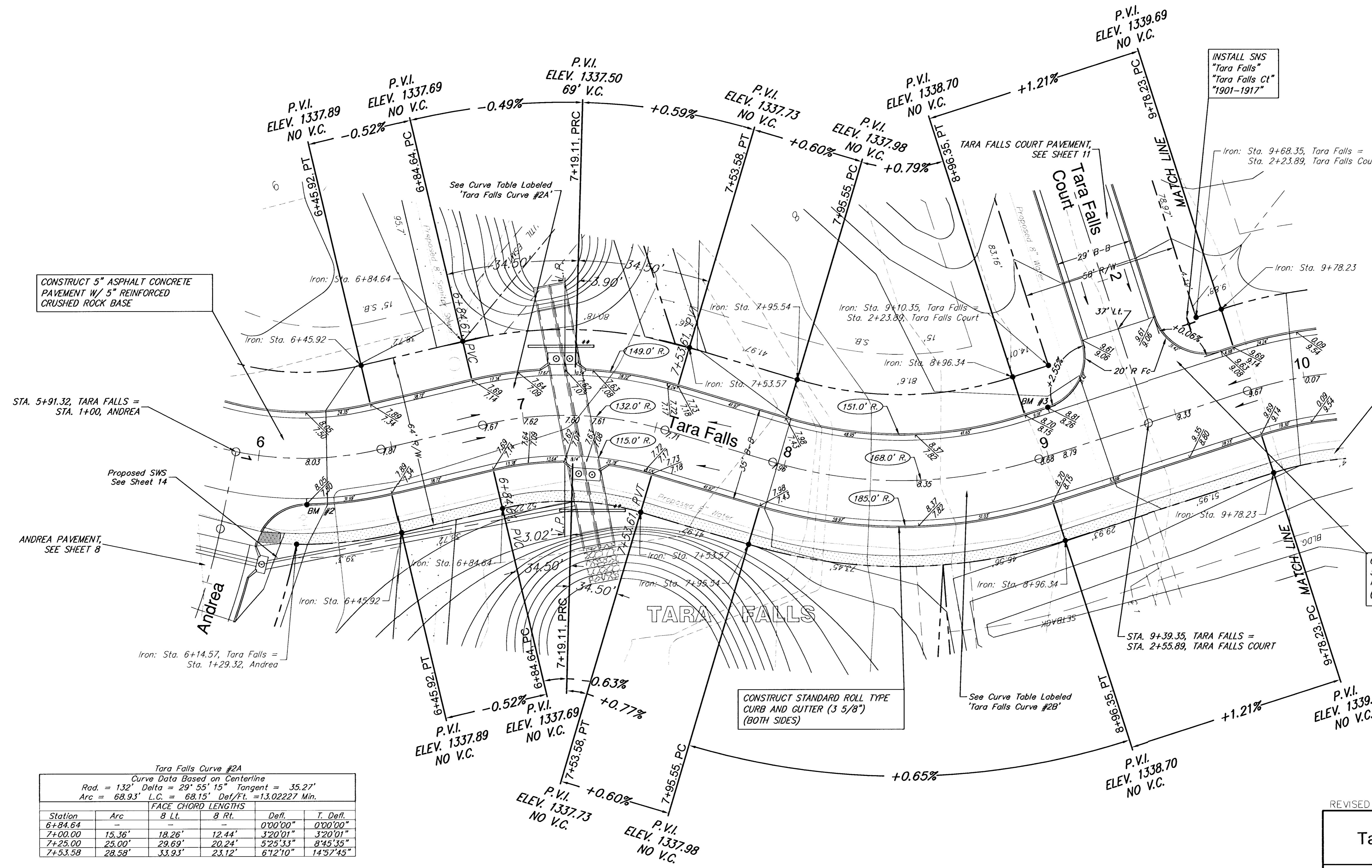
Subdivision Bench Marks

No.	Street and Station	From Cl.	Description	Elevation
2	Tara Falls, Sta. 6+17.86	17.25' Rt.	Top of Curb at the Northeast corner of the intersection of Tara Falls & Andrea. Top of Curb in front of Fire Hydrant.	
3	Tara Falls, Sta. 9+05.35	17.25' Lt.	Top of Curb at the East end of return of the Valley Gutter at the intersection of Tara Falls and Tara Falls Ct.	

Subdivision Bench Marks shall be "Flat Survey Markers No. 8134-08 3" top diameter" provided by Kansas Blue Print Co., Inc. Bench mark installation cost to be subsidiary to curb & gutter.

Tara Falls Curve #2B
Curve Data Based on Centerline
Rad. = 168' Delta = 34° 22' 43" Tangent = 51.97'
Arc = 100.8' L.C. = 99.30' Def/Ft. = 10.23173 Min.

Station	Arc	FACE CHORD LENGTHS		Defl.	T. Defl.
		8 Lt.	8 Rt.		
7+95.55	-	-	-	0'00"00"	0'00"00"
8+00.00	4.45'	3.79'	5.11'	0'45"32"	0'45"32"
8+25.00	25.00'	21.26'	28.69'	4'15"42"	5'01"19"
8+50.00	25.00'	21.26'	28.69'	4'15"42"	9'17"07"
8+75.00	25.00'	21.26'	28.69'	4'15"42"	13'32"54"
8+96.35	21.35'	18.16'	24.51'	3'38"22"	17'11"21"



CONSTRUCT 5" ASPHALT CONCRETE PAVEMENT W/ 5" REINFORCED CRUSHED ROCK BASE

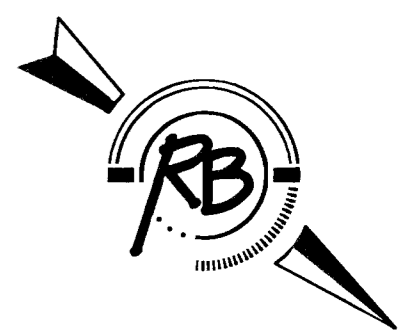
CONSTRUCT 4" CONCRETE SIDEWALK (4' WDE) AS INDICATED

CONSTRUCT VALLEY GUTTER PAVEMENT. 5" REINFORCED CONCRETE W/ 5" CRUSHED ROCK BASE AND MONOLITHIC EDGE CURB (3 5/8") SEE SHEET 4.

CONSTRUCT STANDARD ROLL TYPE CURB AND GUTTER (3 5/8") (BOTH SIDES)

Tara Falls Curve #2A
Curve Data Based on Centerline
Rad. = 132' Delta = 29° 55' 15" Tangent = 35.27'
Arc = 68.93' L.C. = 68.15' Def/Ft. = 13.02227 Min.

Station	Arc	FACE CHORD LENGTHS		Defl.	T. Defl.
		8 Lt.	8 Rt.		
6+84.64	-	-	-	0'00"00"	0'00"00"
7+00.00	15.36'	18.26'	12.44'	3'20"01"	3'20"01"
7+25.00	25.00'	29.69'	20.24'	5'25"33"	8'45"35"
7+53.58	28.58'	33.93'	23.12'	6'12"10"	14'57"45"



SCALE: 1" = 20'
• = IRON

** Retaining Walls. See Storm Water Drain #192 plans for details. Walls may be built before or after paving is completed.

NOTE: ROLL TYPE CURB AND GUTTER TO BE CONSTRUCTED ALONG PAVEMENT DEPICTED ON THIS SHEET

REVISED

Tara Falls - Phase 3 Paving
Tara Falls - Sta. 6+45.92 to Sta. 9+78.23
WICHITA, KANSAS

Ruggles & Bohm, P.A.
Engineering, Surveying, Land Planning

924 North Main
Wichita, Kansas 67203
www.rbkansas.com

(316) 264-8008
(316) 264-4621 fax
E-mail: info@rbkansas.com

DESIGN: MWS
DRAWN: MWS
REVIEW: MWS
UTILITY: MWS
DATE: 02/26/03

DRAWING FILE: Phase 3 Pav... \Paving.dwg
PROJECT NUMBER: 472-83648

SHEET: 6 OF 35