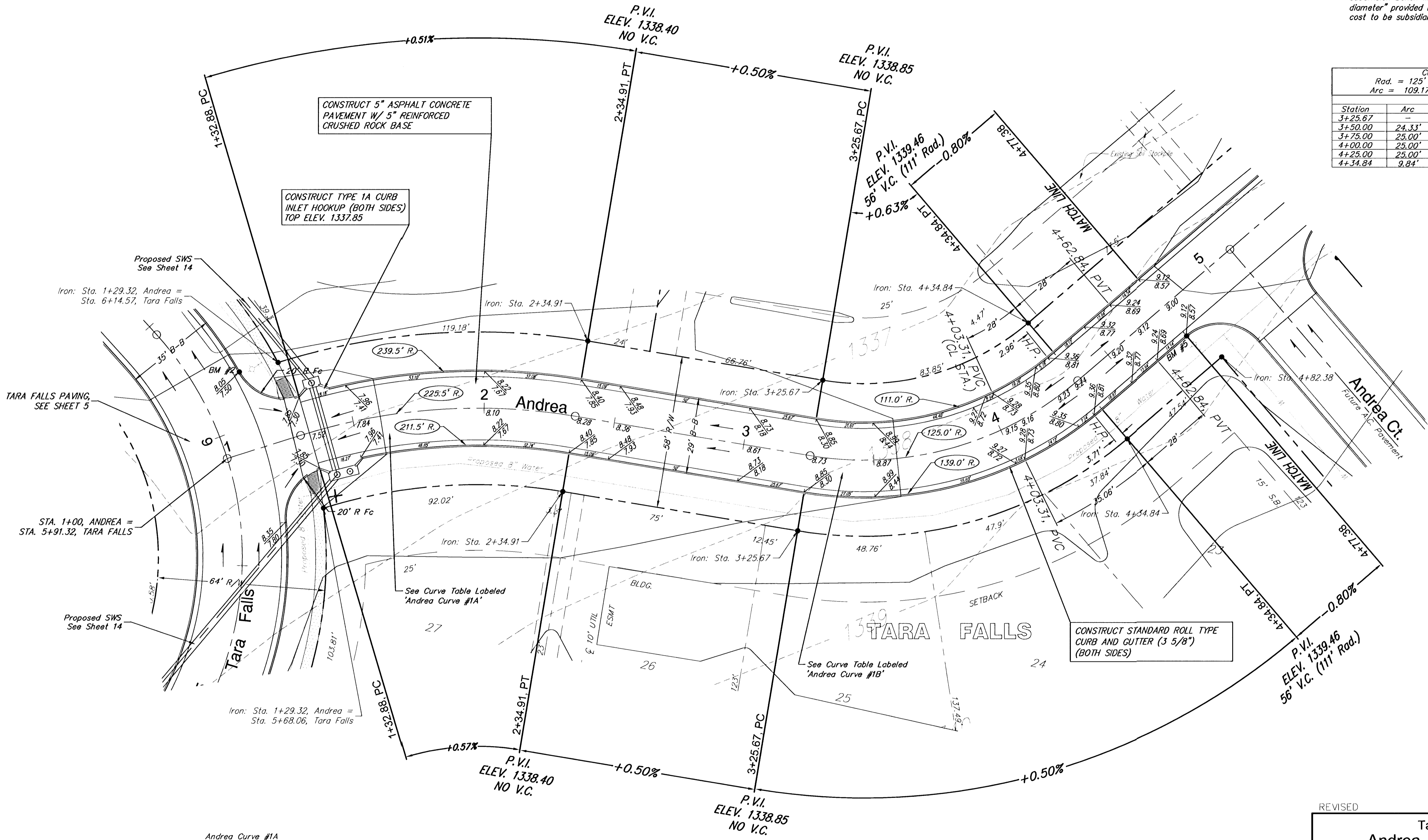


No.	Street and Station	From CL	Description	Elevation
2	Tara Falls, Sta. 6+17.86	17.25' Rt.	Top of Curb at the Northeast corner of the intersection of Tara Falls & Andrea. Top of Curb in front of Fire Hydrant.	
5	Andrea, Sta. 4+77.38	17.25' Rt.	Top of Curb at the Southwest end of return of the Valley Gutter at the intersection of Andrea & Andrea Ct. Top of Curb in front of Fire Hydrant.	

Subdivision Bench Marks shall be "Flat Survey Markers No. 8134-08 3" top diameter" provided by Kansas Blue Print Co., Inc. Bench mark installation cost to be subsidiary to curb & gutter.

Curve Data Based on Centerline					
Rad. = 125' Delta = 50°02' 33" Tangent = 58.34'					
Arc = 109.17' L.C. = 105.74' Def/Ft. = 13.75172 Min.					
Station	Arc	FACE CHORD LENGTHS		Defl.	T. Defl.
		8 Lt.	8 Rt.		
3+25.67	-	-	-	0°00'00"	0°00'00"
3+50.00	24.33'	20.02'	28.57'	5°34'35"	5°34'35"
3+75.00	25.00'	20.52'	29.35'	5°43'47"	11°18'22"
4+00.00	25.00'	20.52'	29.35'	5°43'47"	17°02'10"
4+25.00	25.00'	20.52'	29.35'	5°43'47"	22°45'52"
4+34.84	9.84'	8.11'	11.57'	2°15'19"	25°01'16"



NOTE: ROLL TYPE CURB AND GUTTER TO BE CONSTRUCTED ALONG PAVEMENT DEPICTED ON THIS SHEET



SCALE: 1" = 20'
● = IRON

Curve Data Based on Centerline					
Rad. = 225.5' Delta = 25° 55' 26" Tangent = 51.90'					
Arc = 102.03' L.C. = 101.16' Def/Ft. = 7.62243 Min.					
Station	Arc	FACE CHORD LENGTHS		Defl.	T. Defl.
		8 Lt.	8 Rt.		
1+32.88	-	-	-	0°00'00"	0°00'00"
1+50.00	17.12'	18.79'	15.45'	2°10'30"	2°10'30"
1+75.00	25.00'	27.42'	22.55'	3°10'33"	5°21'03"
2+00.00	25.00'	27.42'	22.55'	3°10'33"	8°31'37"
2+25.00	25.00'	27.42'	22.55'	3°10'33"	11°42'10"
2+34.91	9.91'	10.88'	8.94'	1°15'32"	12°57'43"

REVISED

Tara Falls - Phase 3 Paving
Andrea - Sta. 1+00 to Sta. 4+77.38
WICHITA, KANSAS

Ruggles & Bohm, P.A.
Engineering, Surveying, Land Planning

924 North Main
Wichita, Kansas 67203
www.rbkansas.com

(316) 264-8008
(316) 264-4621 fax
E-mail: info@rbkansas.com

DRAWING FILE: Phase 3 Pav...Paving.dwg
PROJECT NUMBER: 472-83648
DATE: 02/26/03

DESIGN: MWS
DRAWN: MWS
REVIEW: MWS
UTILITY

SHEET: 8 OF 8