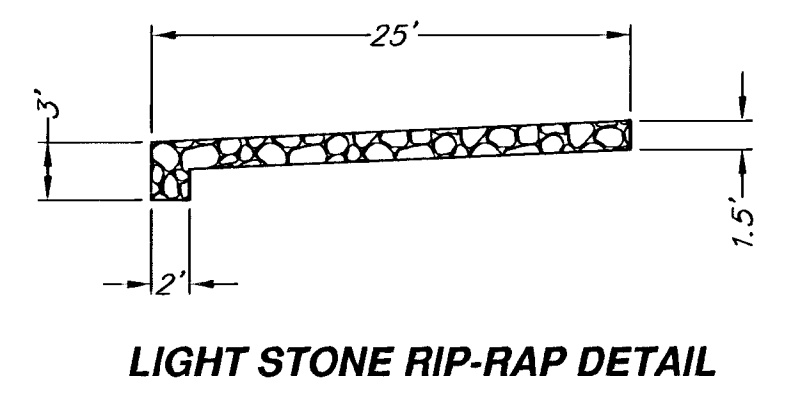


STATION 0+00, LINE 1
PLACE 28 SQ. YDS. LIGHT STONE
RIP-RAP AS INDICATED. REGRADE
POND BOTTOM AS NECESSARY TO
ALLOW RIP-RAP PLACEMENT AND
STORM SEWER CONSTRUCTION.

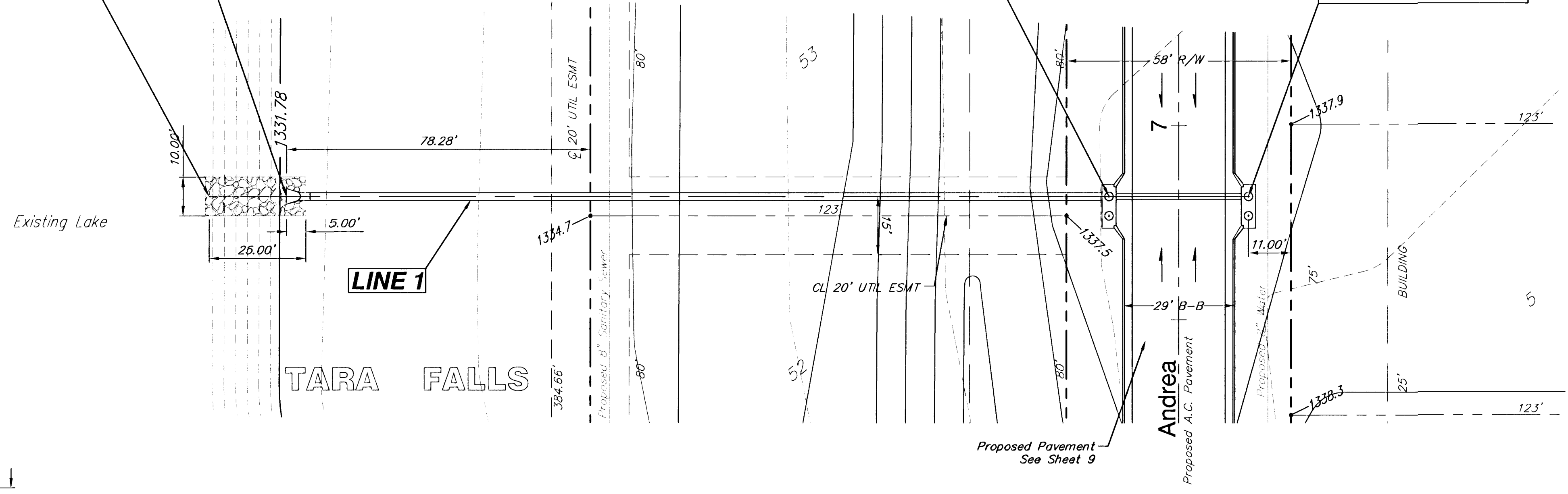
STATION 0+20, LINE 1
BEGIN STORM SEWER CONSTRUCTION.
INSTALL 24" RCP END SECTION.

STATION 2+32.28, LINE 1 =
STREET STA. 6+81.78, 18.0' LT.
CONSTRUCT TYPE 1A INLET
L = 11'-4" W = 4'-4"
TOP ELEV. 1337.60

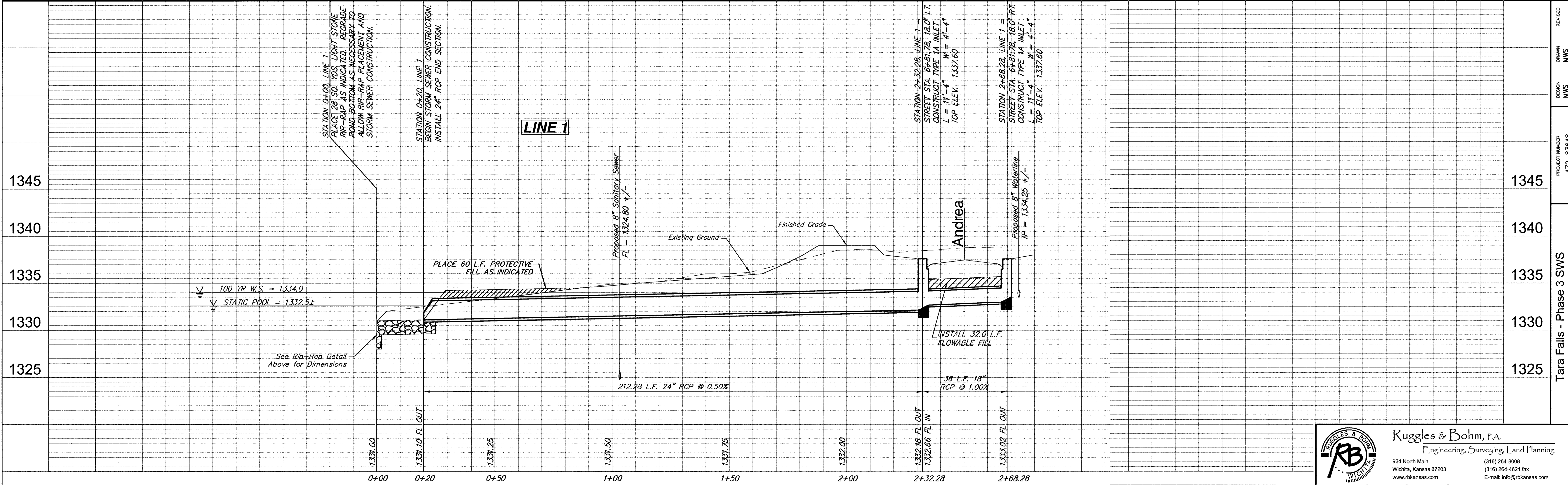
STATION 2+68.28, LINE 1 =
STREET STA. 6+81.78, 18.0' RT.
CONSTRUCT TYPE 1A INLET
L = 11'-4" W = 4'-4"
TOP ELEV. 1337.60



LIGHT STONE RIP-RAP DETAIL



SCALE
1" = 20' Horiz. (Plan & Profile)
1" = 5' Vert. (Profile)



DESIGN	MWS	UTILITY
DRAWN	MWS	DATE
PROJECT NUMBER	472-83648	DRAWING FILE
Phase 3 Pav...		Paving.dwg
REVISION		REVIEW
		12/03/02

Tara Falls - Phase 3 SWS
Line 1
WICHITA, KANSAS

RUGGLES & BOHM
Ruggles & Bohm, P.A.
Engineering, Surveying, Land Planning
924 North Main
Wichita, Kansas 67203
www.rbkansas.com
(316) 264-8008
(316) 264-4621 fax
E-mail: info@rbkansas.com