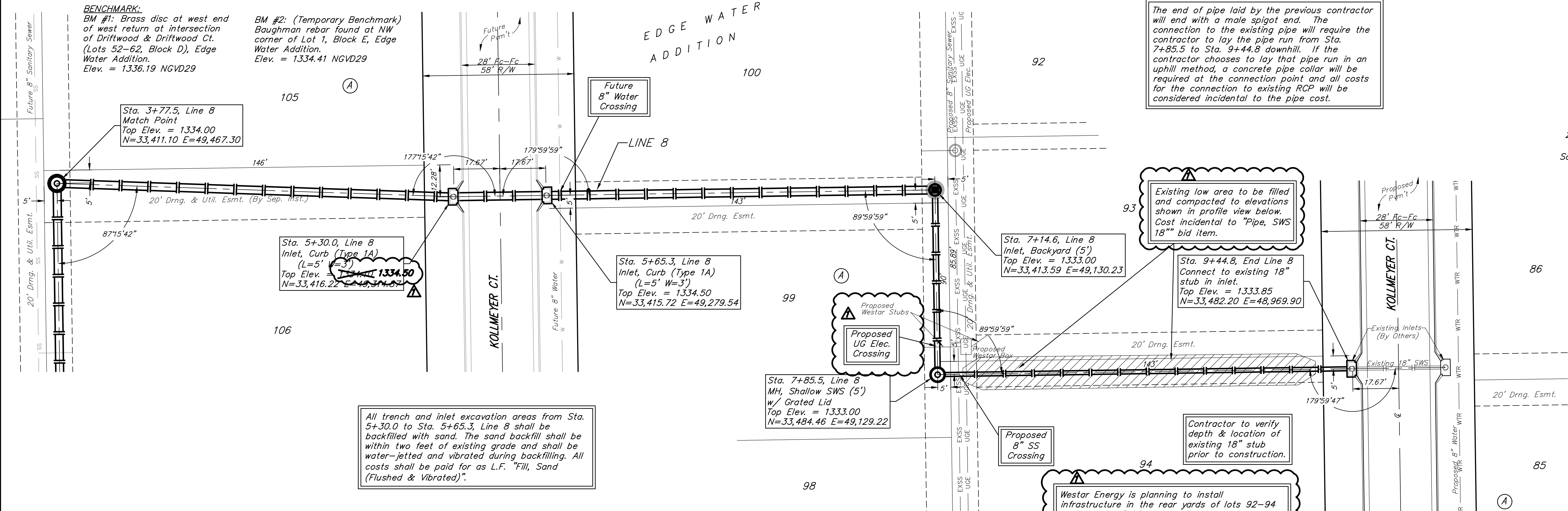


BENCHMARK:
 BM #1: Brass disc at west end of west return at intersection of Driftwood & Driftwood Ct. (Lots 52-62, Block D), Edge Water Addition.
 Elev. = 1336.19 NGVD29

BM #2: (Temporary Benchmark) Baughman rebar found at NW corner of Lot 1, Block E, Edge Water Addition.
 Elev. = 1334.41 NGVD29

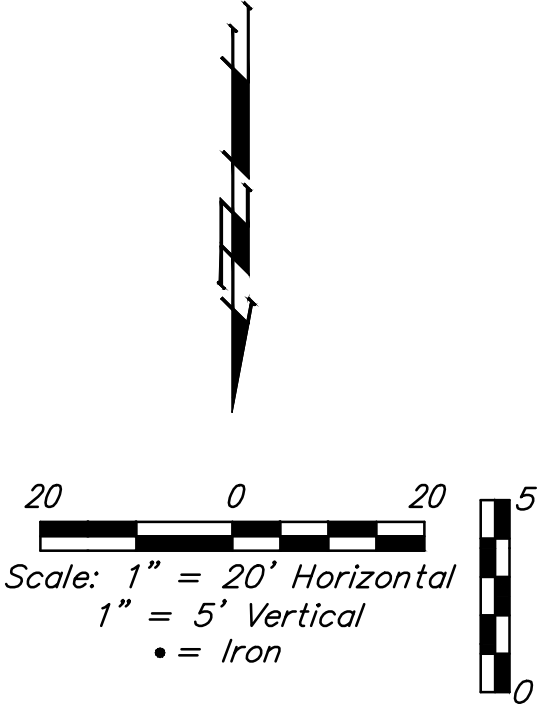
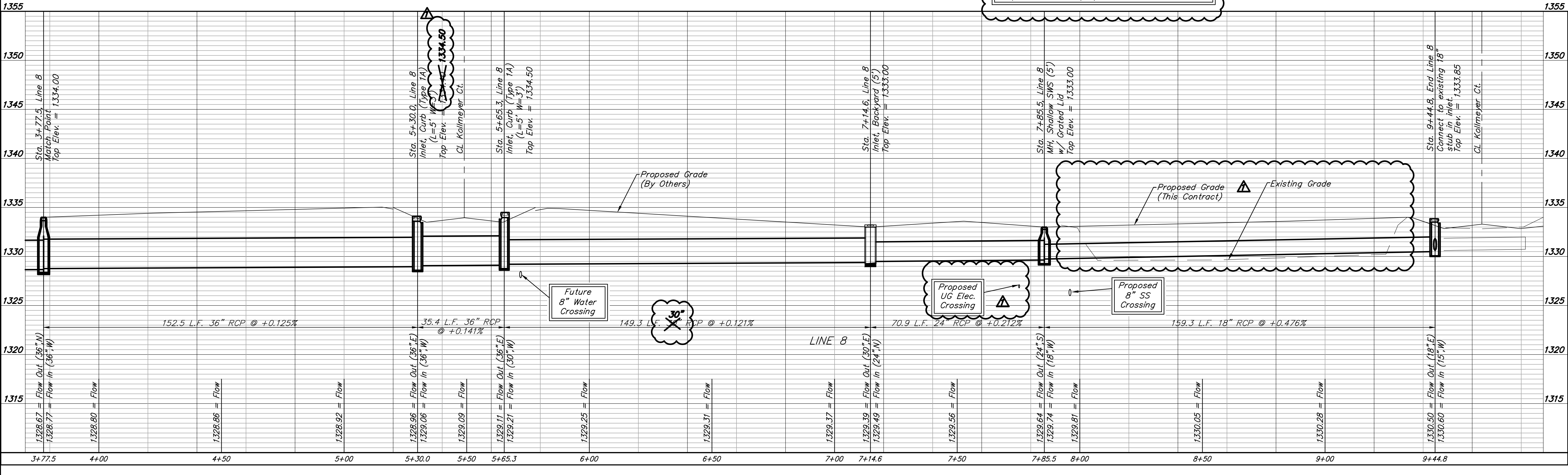


All trench and inlet excavation areas from Sta. 5+30.0 to Sta. 5+65.3, Line 8 shall be backfilled with sand. The sand backfill shall be within two feet of existing grade and shall be water-jetted and vibrated during backfilling. All costs shall be paid for as L.F. "Fill, Sand (Flushed & Vibrated)".

The end of pipe laid by the previous contractor will end with a male spigot end. The connection to the existing pipe will require the contractor to lay the pipe run from Sta. 7+85.5 to Sta. 9+44.8 downhill. If the contractor chooses to lay that pipe run in an uphill method, a concrete pipe collar will be required at the connection point and all costs for the connection to existing RCP will be considered incidental to the pipe cost.

Existing low area to be filled and compacted to elevations shown in profile view below. Cost incidental to "Pipe, SWS 18" bid item.

Westar Energy is planning to install infrastructure in the rear yards of lots 92-94 and may be finished prior to storm sewer construction. Westar installation depth is 6'-7' deep to avoid the proposed storm sewer.



EDGE WATER 3RD ADDITION
LINE 8
 STORM WATER SEWER IMPROVEMENTS

BAUGHMAN COMPANY, P.A.
 145 E. WILSON, SUITE 201, PHILADELPHIA, PA 19102
 ENGINEERING, SURVEYING, PLANNING, LANDSCAPE ARCHITECTURE
 Date: 01/22/19
 Project: Edge Water 3rd Addition Storm Sewer Improvements
 Sheet: 13 of 38