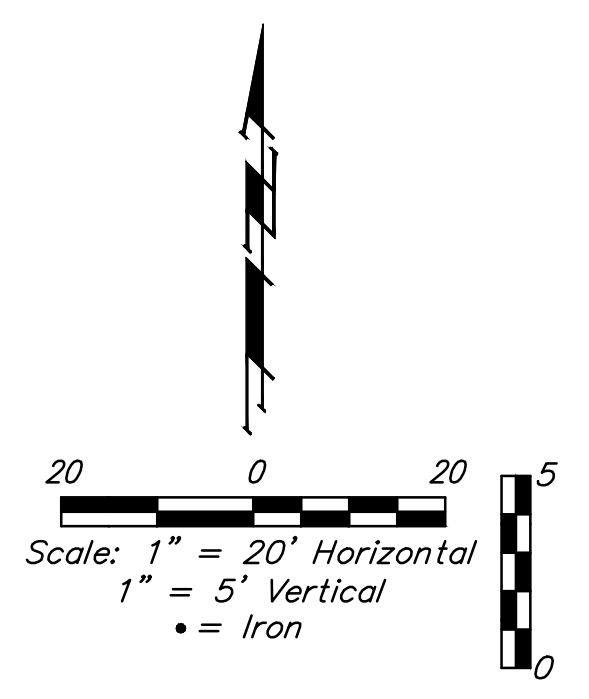
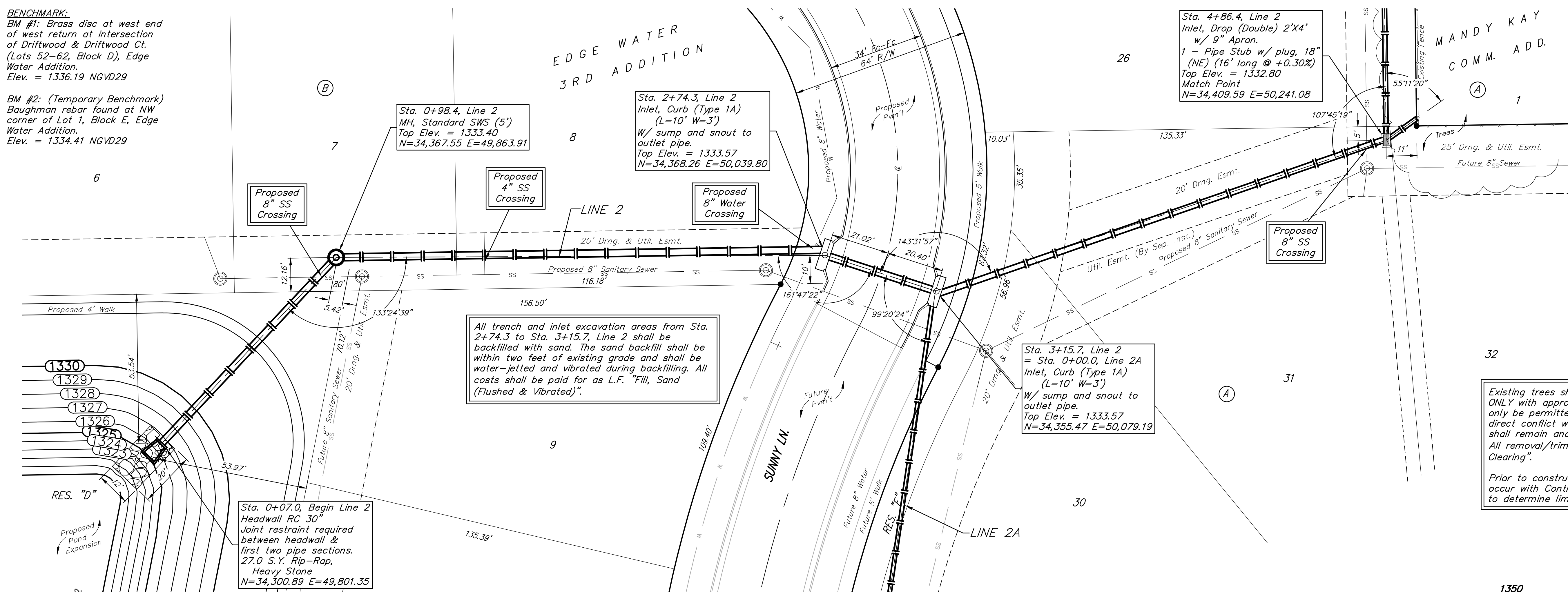


**BENCHMARK:**  
 BM #1: Brass disc at west end of west return at intersection of Driftwood & Driftwood Ct. (Lots 52-62, Block D), Edge Water Addition.  
 Elev. = 1336.19 NGVD29

BM #2: (Temporary Benchmark) Baughman rebar found at NW corner of Lot 1, Block E, Edge Water Addition.  
 Elev. = 1334.41 NGVD29



Existing trees shall be trimmed/removed ONLY with approval of Developer. Trimming will only be permitted with chainsaws. Trees not in direct conflict with proposed new construction shall remain and be protected from damage. All removal/trimming shall be included in "Site Clearing".

Prior to construction, an on-site meeting will occur with Contractor, Developer, and Engineer to determine limits of tree clearing.

