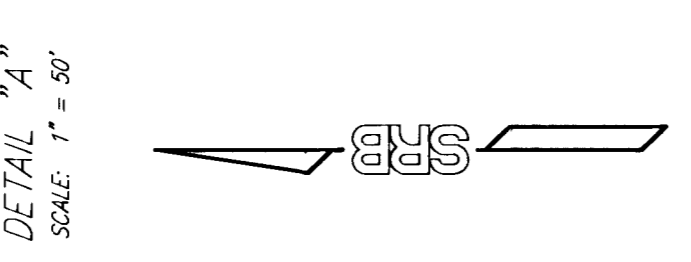
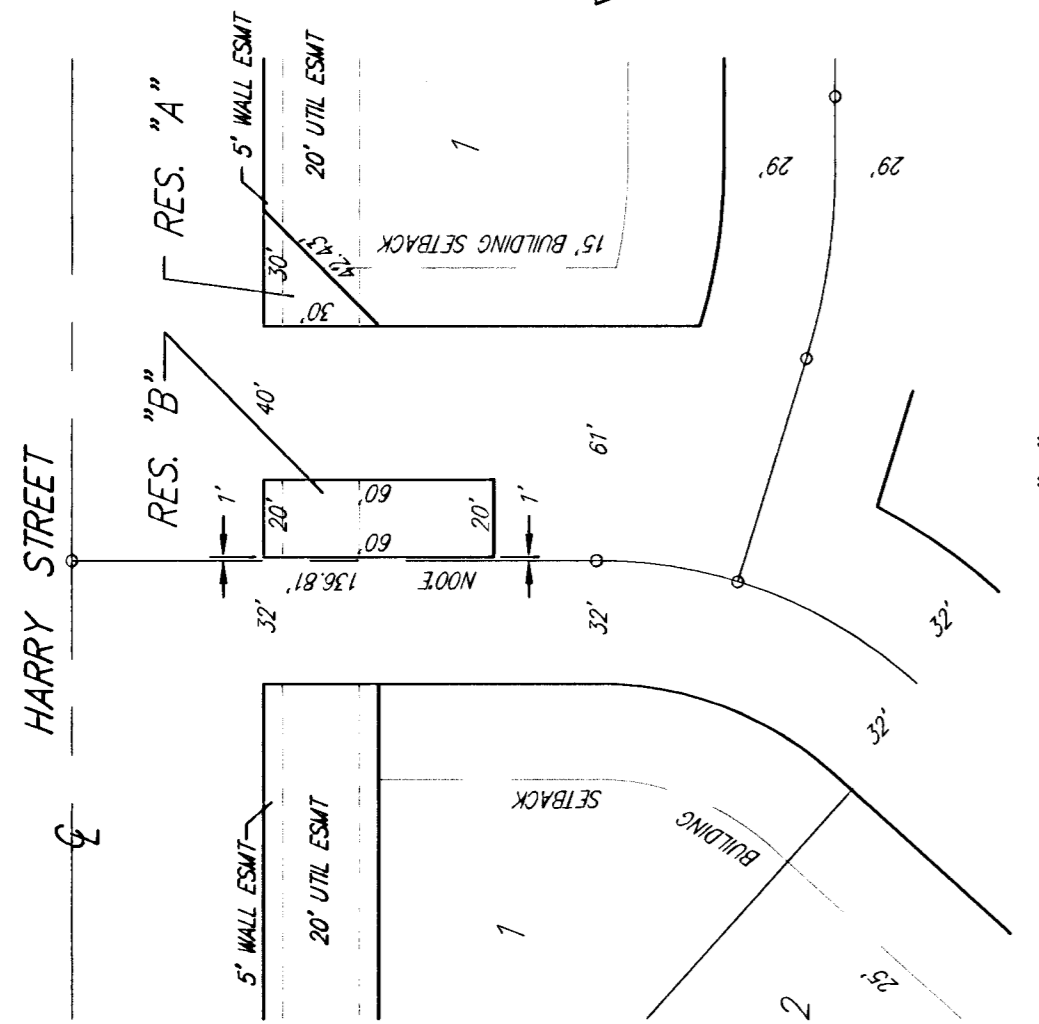
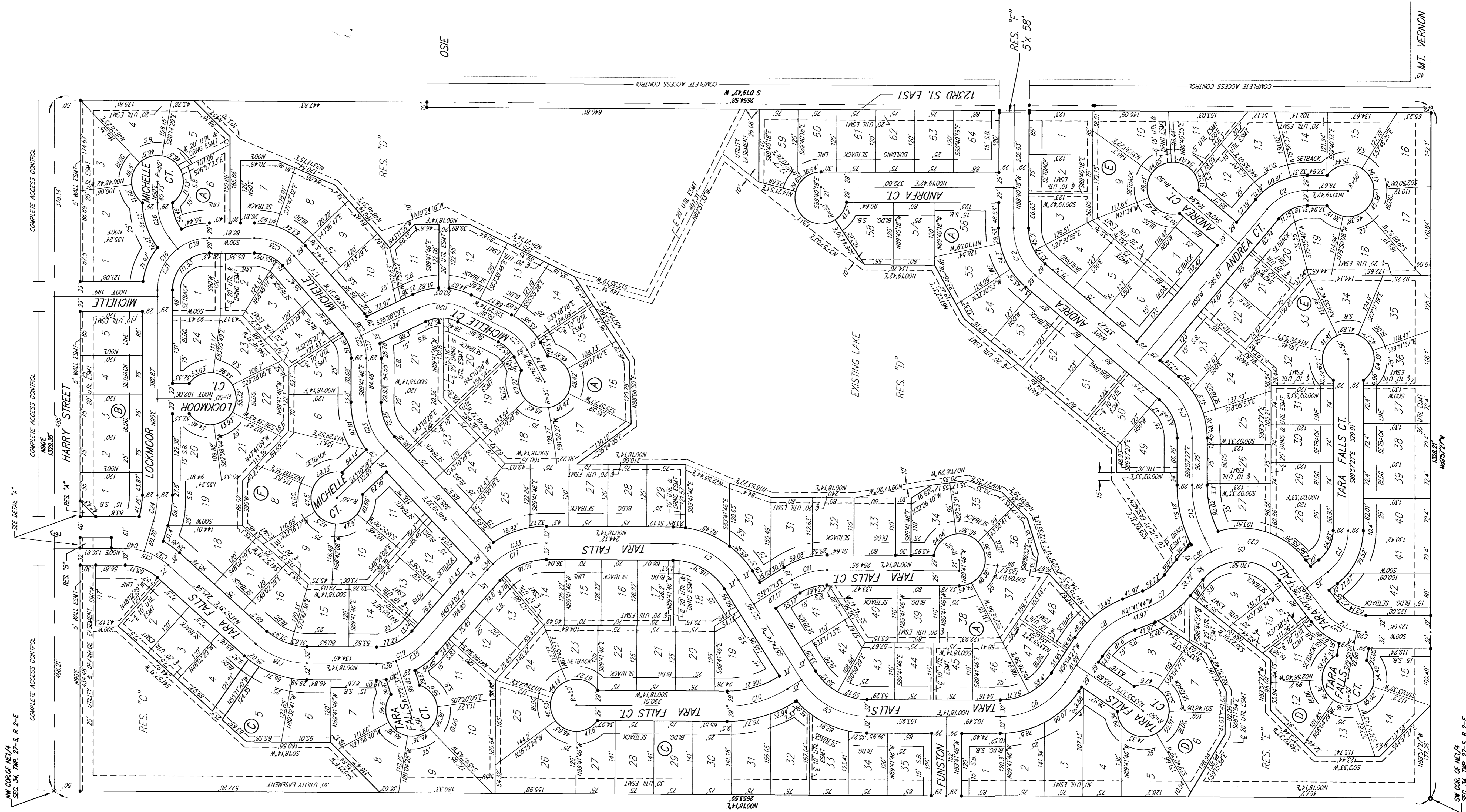


TARA FALLS ADDITION

SEDGWICK COUNTY, KANSAS



SCALE: 1" = 50'

- = 1/2" REBAR W/50¢ CAP (SET)
- = 1/2" IRON IN TRIMBLE (FOUND)
- = 1/2" REBAR W/15117 CAP (FOUND)
- = 40¢ WALL (FOUND)

BENCHMARK:
R.R. SPIKE IN UTILITY POLE, 48' WEST AND 40' SOUTH
OF THE S.M. COR. SEC. 27, T27S, R2E
ELEV. 1571.19 CITY DATUM
ELEV. 1344.59 M.G.V.D.

CURVE	LENGTH	RADIUS	DEG. TA
C1	150.37	150.00	57.2433
C2	87.84	100.00	50.7942
C3	91.37	100.00	57.2433
C4	91.38	100.00	57.2433
C5	122.63	150.00	50.7942
C6	68.81	100.00	20.5515
C7	100.80	100.00	54.2244
C8	150.30	150.00	57.2433
C9	122.71	215.77	32.0527
C10	71.07	125.00	32.0527
C11	103.65	175.00	50.7942
C12	109.60	225.00	20.5515
C13	109.18	175.00	50.7942
C14	91.54	125.00	47.5737
C15	157.09	100.00	50.7942
C16	238.87	150.00	49.7276
C17	108.87	142.00	47.5737
C18	104.77	172.00	49.7276
C19	100.00	100.00	54.2244
C20	68.81	100.00	20.5515
C21	79.48	100.00	47.5737
C22	94.86	125.00	47.5737
C23	50.41	100.00	17.2807
C24	85.17	100.00	49.4637
C25	65.17	112.00	37.2657
C26	71.64	100.00	47.5737
C27	17.74	100.00	10.0959
C28	174.05	175.00	20.5515
C29	54.67	175.00	24.9492
C30	91.43	100.00	57.2433
C31	54.16	175.00	24.9492
C32	113.83	150.00	47.5737
C33	68.81	100.00	20.5515
C34	14.89	150.00	10.3834
C35	88.95	100.00	47.5737
C36	27.60	100.00	15.5527
C37	44.68	100.00	17.2807
C38	65.65	100.00	15.5527
C39	37.38	125.00	17.2807
C40			

BLOCK	LOT NO.	ELEVATION (M.G.V.D.)
A	5, 6, 7, 8, 9, 10	1327
	11, 12, 13, 14 & 15	
A	16, 17	
	27, 28, 29, 30, 31, 32	
C	33, 34, 35, 36, 37	1336
	48, 49, 50, 51, 52, 53	
D	54, 55, 56, 57, 58	
	59, 60, 61 & 62	
D	1, 2, 3, 4, 5	1337
	6, 7 & 8	
D	9, 10	1339
	11 & 12	
D	13	1340
	14 & 15	1341

REVISED

TARA FALLS ADDITION FINAL PLAT WICHITA, KANSAS

Ruggles & Bohm, P.A.
Engineering, Surveying, Land and Planning

824 North Main (316) 264-8008
Wichita, Kansas 67203(316) 264-4021 fax
www.rbkansas.com E-mail: info@rbkansas.com

DRAWING FILE: ...Paving Details.dwg PROJECT NUMBER: 472-8368

DESIGN: RJ/MS
DRAWN: RC
REVIEW: JUDHY

DATE: June 1, 2001

SHEET 35 OF 35