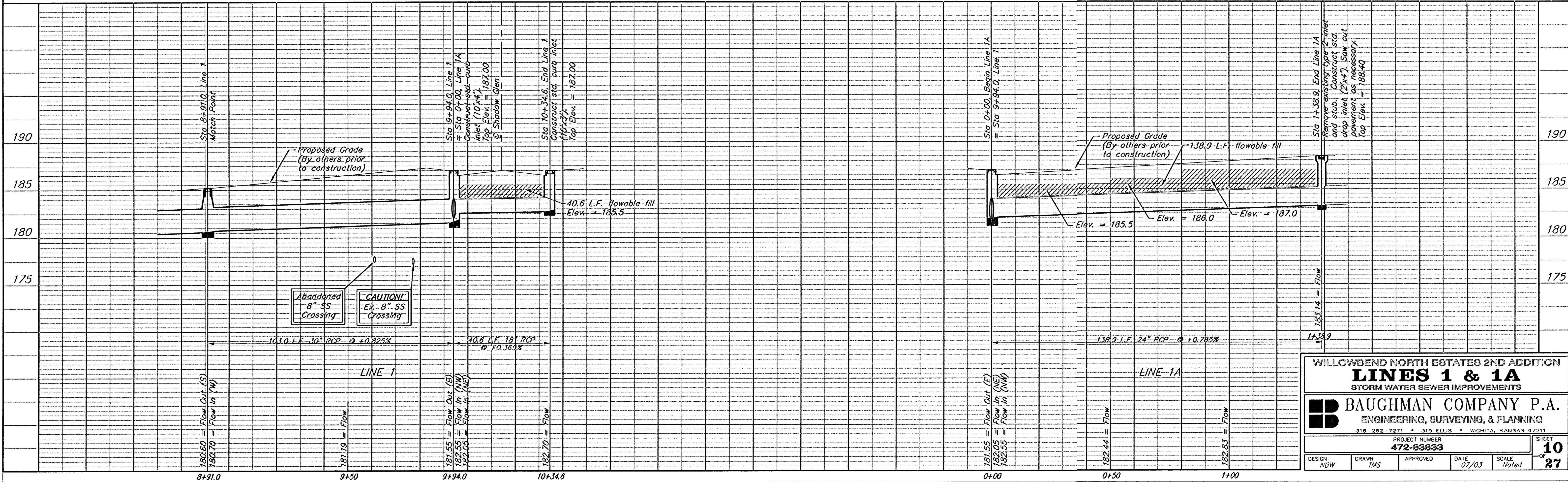
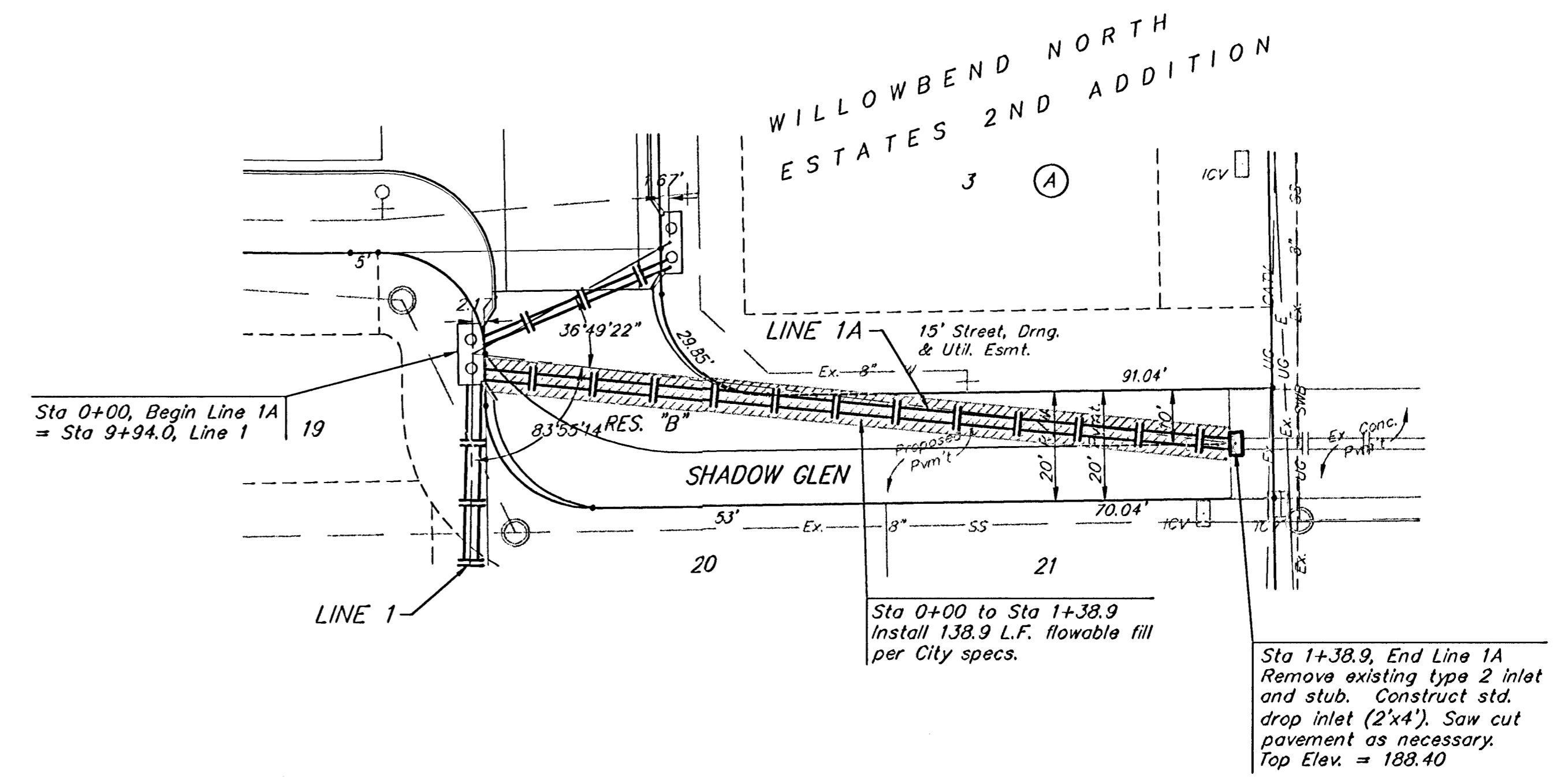
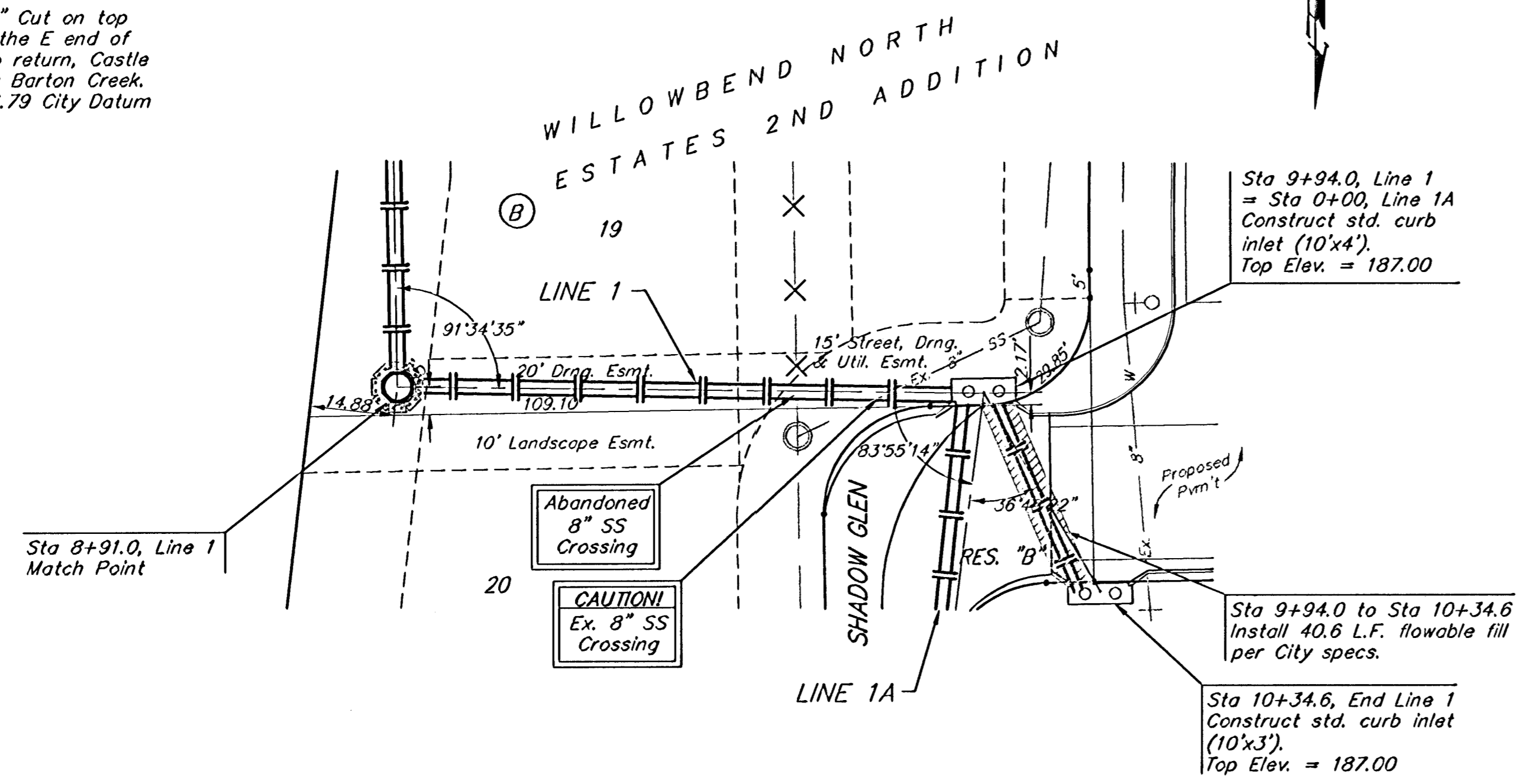


BENCHMARKS:
 BM #1: "□" Cut on top of curb, 30± N of the NE corner of Barton Creek, Willowbend North Estates 2nd Addition.
 Elev. = 191.31 City Datum

BM #1: "□" Cut on top of curb at the E end of the NE curb return, Castle Pines St. & Barton Creek.
 Elev. = 196.79 City Datum

Scale: 1" = 20' Horizontal
 1" = 5' Vertical
 • = Iron



WILLOWBEND NORTH ESTATES 2ND ADDITION
LINES 1 & 1A
 STORM WATER SEWER IMPROVEMENTS

BAUGHMAN COMPANY P.A.
 ENGINEERING, SURVEYING, & PLANNING
 315-262-7271 • 315 ELLIS • WICHITA, KANSAS 67211

PROJECT NUMBER: 472-83833
 SHEET: 10 OF 27

DESIGN: NBW DRAWN: TMS APPROVED: [Signature] DATE: 07/03 SCALE: Noted