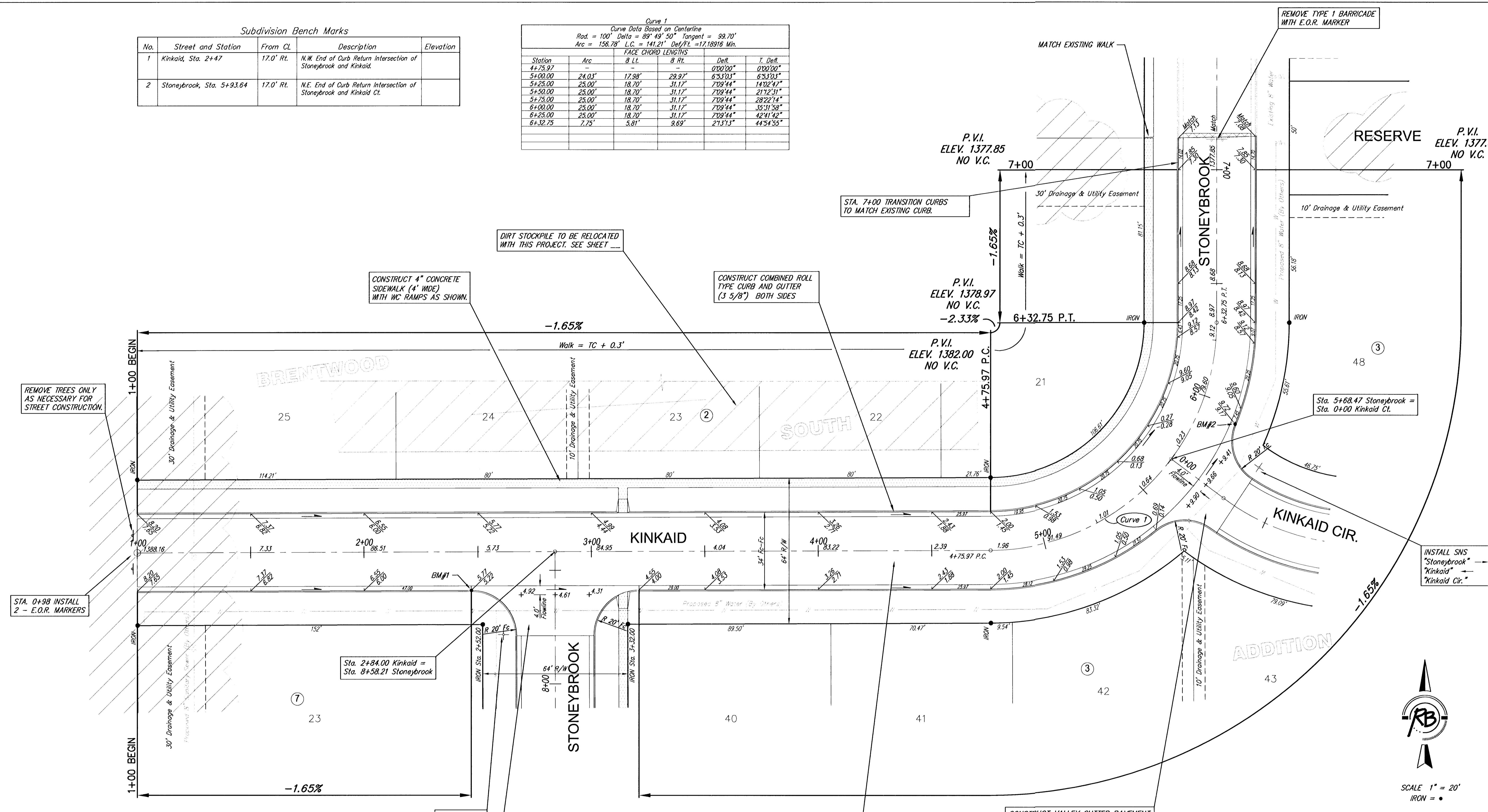


Subdivision Bench Marks

| No. | Street and Station | From CL | Description | Elevation |
|-----|---------------------------|-----------|---|-----------|
| 1 | Kinkaid, Sta. 2+47 | 17.0' Rt. | N.W. End of Curb Return Intersection of Stoneybrook and Kinkaid. | |
| 2 | Stoneybrook, Sta. 5+93.64 | 17.0' Rt. | N.E. End of Curb Return Intersection of Stoneybrook and Kinkaid Ct. | |

Curve 1
Curve Data Based on Centerline
Rad. = 100' Delta = 89° 49' 50" Tangent = 99.70'
Arc = 156.78' L.C. = 141.21' Def/ft. = 17.18916 Min.

| Station | Arc | FACE CHORD LENGTHS | | Defl. | T. Defl. |
|---------|--------|--------------------|--------|----------|-----------|
| | | B. Lt. | B. Rt. | | |
| 4+75.97 | - | - | - | 0°00'00" | 0°00'00" |
| 5+00.00 | 24.03' | 17.98' | 29.97' | 6°53'03" | 6°53'03" |
| 5+25.00 | 25.00' | 18.70' | 31.17' | 7°09'44" | 14°02'47" |
| 5+50.00 | 25.00' | 18.70' | 31.17' | 7°09'44" | 21°12'31" |
| 5+75.00 | 25.00' | 18.70' | 31.17' | 7°09'44" | 28°22'14" |
| 6+00.00 | 25.00' | 18.70' | 31.17' | 7°09'44" | 35°31'58" |
| 6+25.00 | 25.00' | 18.70' | 31.17' | 7°09'44" | 42°41'42" |
| 6+32.75 | 7.75' | 5.81' | 9.69' | 2°13'13" | 44°54'55" |



**Brentwood South Addition, Paving Improvements
Kinkaid / Stoneybrook
WICHITA, KANSAS**

Ruggles & Bohm, P.A.
Engineering, Surveying, Land Planning

924 North Main
Wichita, Kansas 67203
www.rbkansas.com

(316) 264-8008
(316) 264-4621 fax
E-mail: info@rbkansas.com

DESIGN: KWL
DRAWN: RA
REVIEW:
UTILITY:

DATE: June 23, 2003
PROJECT NUMBER: 472-83445
SHEET: 5 OF 36

NOTE: ROLL TYPE CURB AND GUTTER TO BE CONSTRUCTED ALONG PAVEMENT DEPICTED ON THIS SHEET