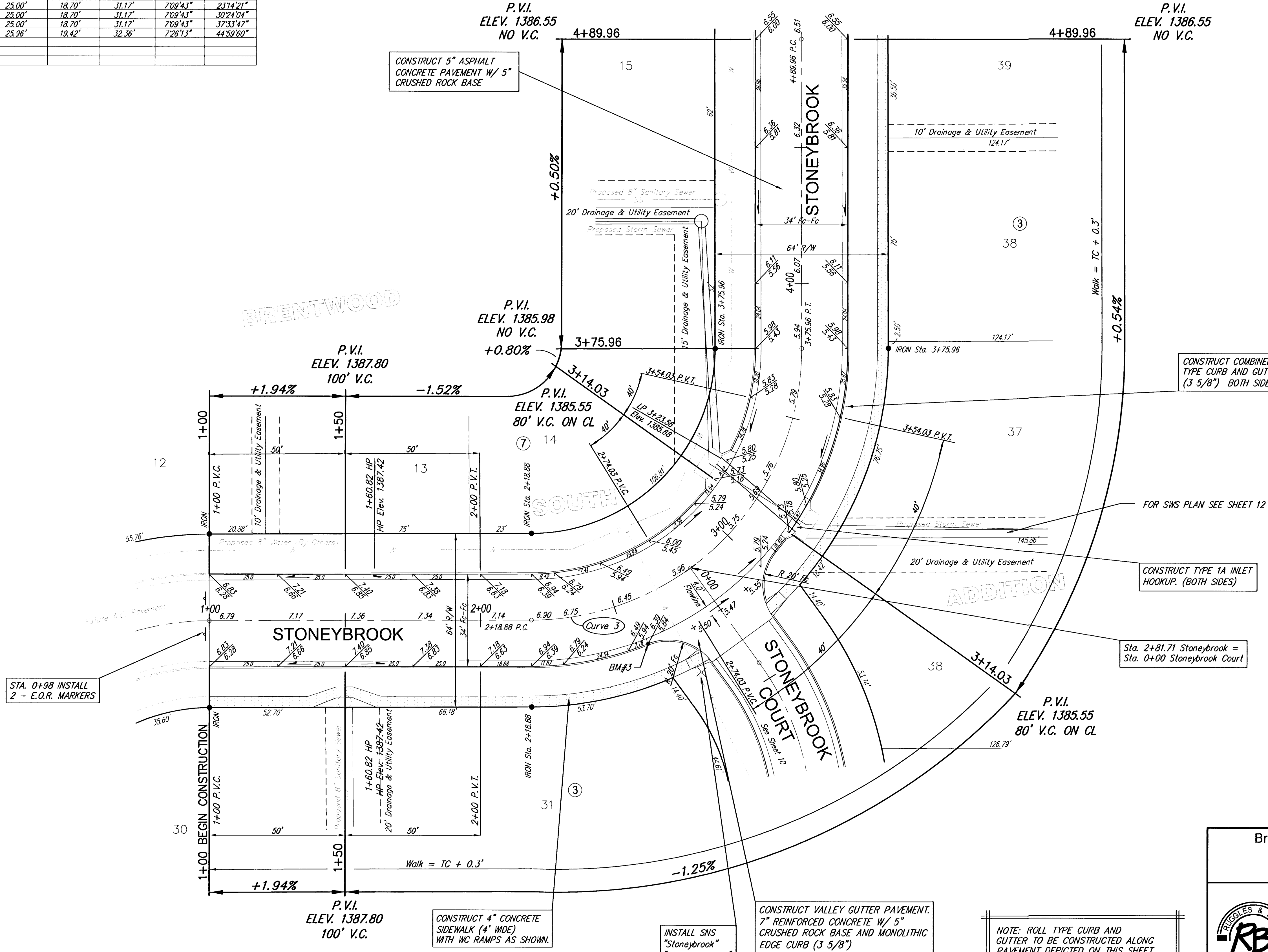


Curve 3
Curve Data Based on Centerline
Rad. = 100' Delta = 90°00'00" Tangent = 100.00'
Arc = 157.08' L.C. = 141.42' Def/Ft. = 17.18889 Min.

| Station | Arc | FACE CHORD LENGTHS | | | |
|---------|--------|--------------------|--------|----------|-----------|
| | | B Lt. | B Rt. | Def. | T. Def. |
| 2+18.88 | - | - | - | 0'00"00" | 0'00"00" |
| 2+25.00 | 6.12' | 4.59' | 7.65' | 1'45"11" | 1'45"11" |
| 2+50.00 | 25.00' | 18.70' | 31.17' | 7'09"43" | 8'54"55" |
| 2+75.00 | 25.00' | 18.70' | 31.17' | 7'09"43" | 16'04"38" |
| 3+00.00 | 25.00' | 18.70' | 31.17' | 7'09"43" | 23'14"21" |
| 3+25.00 | 25.00' | 18.70' | 31.17' | 7'09"43" | 30'24"04" |
| 3+50.00 | 25.00' | 18.70' | 31.17' | 7'09"43" | 37'33"47" |
| 3+75.98 | 25.98' | 19.42' | 32.36' | 7'26"13" | 44'59"80" |

Subdivision Bench Marks

| No. | Street and Station | From Cl. | Description | Elevation |
|-----|---------------------------|-----------|--|-----------|
| 3 | Stoneybrook, Sta. 2+56.63 | 17.0' Rt. | N.E. End of Curb Return Intersection of Stoneybrook and Stoneybrook Ct. (East) | |



STA. 0+98 INSTALL
2 - E.O.R. MARKERS

CONSTRUCT 5" ASPHALT
CONCRETE PAVEMENT W/ 5"
CRUSHED ROCK BASE

CONSTRUCT COMBINED ROLL
TYPE CURB AND GUTTER
(3 5/8") BOTH SIDES

FOR SWS PLAN SEE SHEET 12

CONSTRUCT TYPE 1A INLET
HOOKUP. (BOTH SIDES)

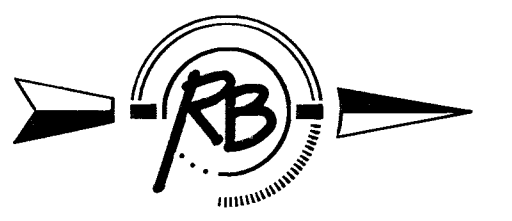
Sta. 2+81.71 Stoneybrook =
Sta. 0+00 Stoneybrook Court

CONSTRUCT 4" CONCRETE
SIDEWALK (4' WIDE)
WITH WC RAMPS AS SHOWN.

INSTALL SNS
"Stoneybrook"
"Stoneybrook Ct"
2220 - 2240

CONSTRUCT VALLEY GUTTER PAVEMENT.
7" REINFORCED CONCRETE W/ 5"
CRUSHED ROCK BASE AND MONOLITHIC
EDGE CURB (3 5/8")

NOTE: ROLL TYPE CURB AND
GUTTER TO BE CONSTRUCTED ALONG
PAVEMENT DEPICTED ON THIS SHEET



SCALE 1" = 20'
IRON = •

Brentwood South Addition, Paving Improvements
Stoneybrook
WICHITA, KANSAS

Ruggles & Bohm, P.A.
Engineering, Surveying, Land Planning
924 North Main
Wichita, Kansas 67203
www.rbkansas.com
(316) 264-8008
(316) 264-4621 fax
E-mail: info@rbkansas.com

DESIGN: KML
DRAWN: RA
REVIEW: RA
UTILITY: RA
DATE: June 23, 2003

SHEET 7 OF 36

PROJECT NUMBER 472-83445