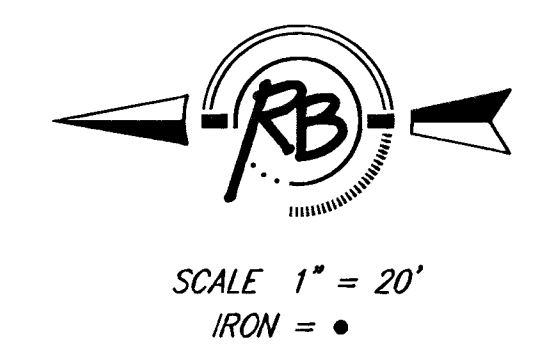
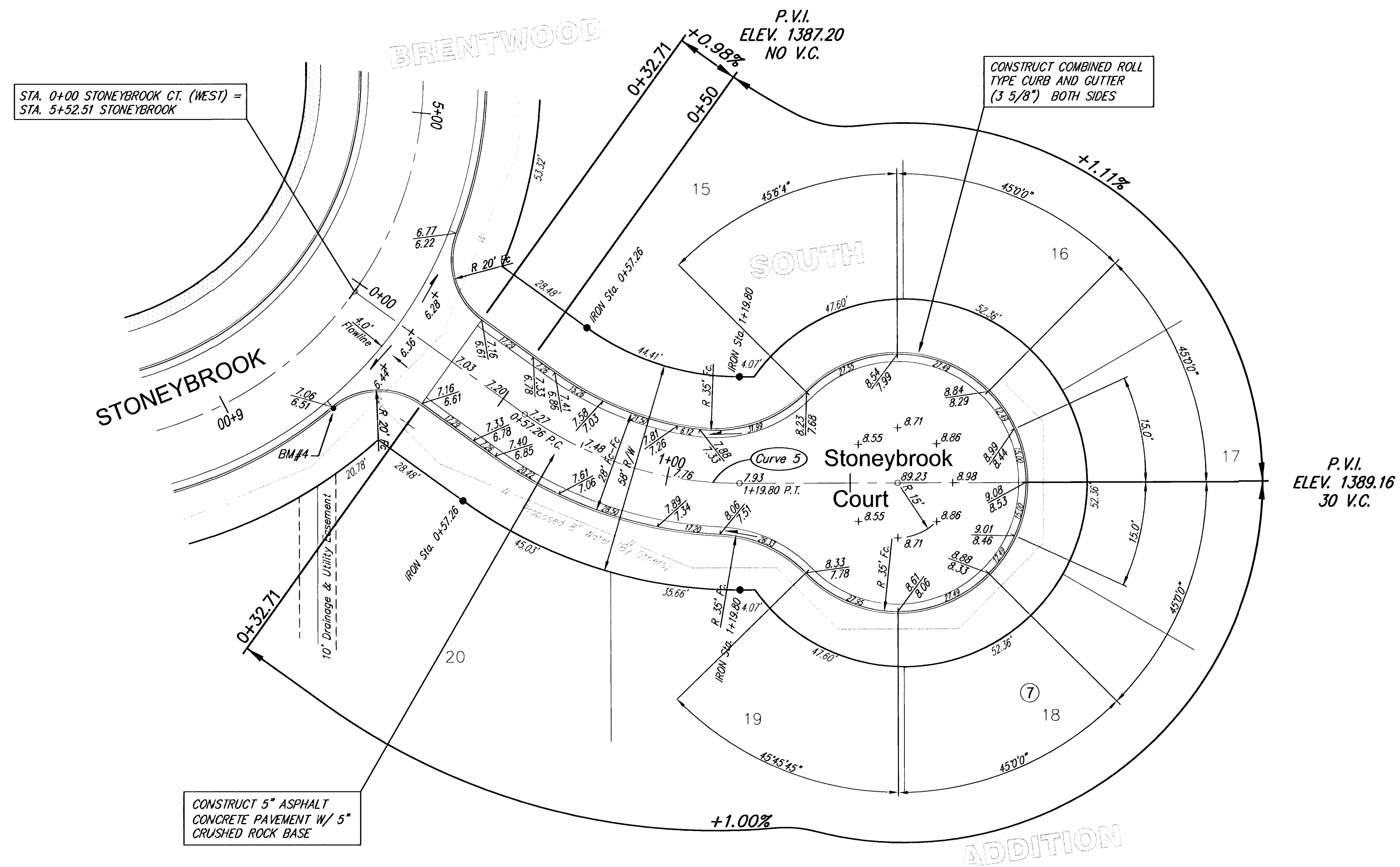


Curve 5
Curve Data Based on Centerline
Rad. = 100' Delta = 35° 50' 09" Tangent = 32.33'
Arc = 62.55' L.C. = 61.53' Del/Pt. = 17.18745 Min.

Station	Arc	FACE CHORD LENGTHS		Defl.	T. Defl.
		8 Lt.	8 Rt.		
0+57.28	-	-	-	0°00'00"	0°00'00"
0+75.00	17.72'	13.80'	21.59'	5°04'33"	5°04'33"
1+00.00	25.00'	19.45'	30.42'	7°09'41"	12°14'15"
1+19.80	19.80'	15.42'	24.11'	5°40'18"	17°54'33"



NOTE: ROLL TYPE CURB AND GUTTER TO BE CONSTRUCTED ALONG PAVEMENT DEPICTED ON THIS SHEET

**Brentwood South Addition, Paving Improvements
Stoneybrook Court (West)
WICHITA, KANSAS**

 Ruggles & Bohm, P.A. Engineering, Surveying, Land Planning 924 North Main Wichita, Kansas 67203 www.rbkansas.com	DESIGN KWL	SHEET 9 OF 36
	DRAWN RA	
REVIEW	PROJECT NUMBER 472-83445	DATE June 23, 2003
DRAWING FILE paving {STONEYBROOK CT}		