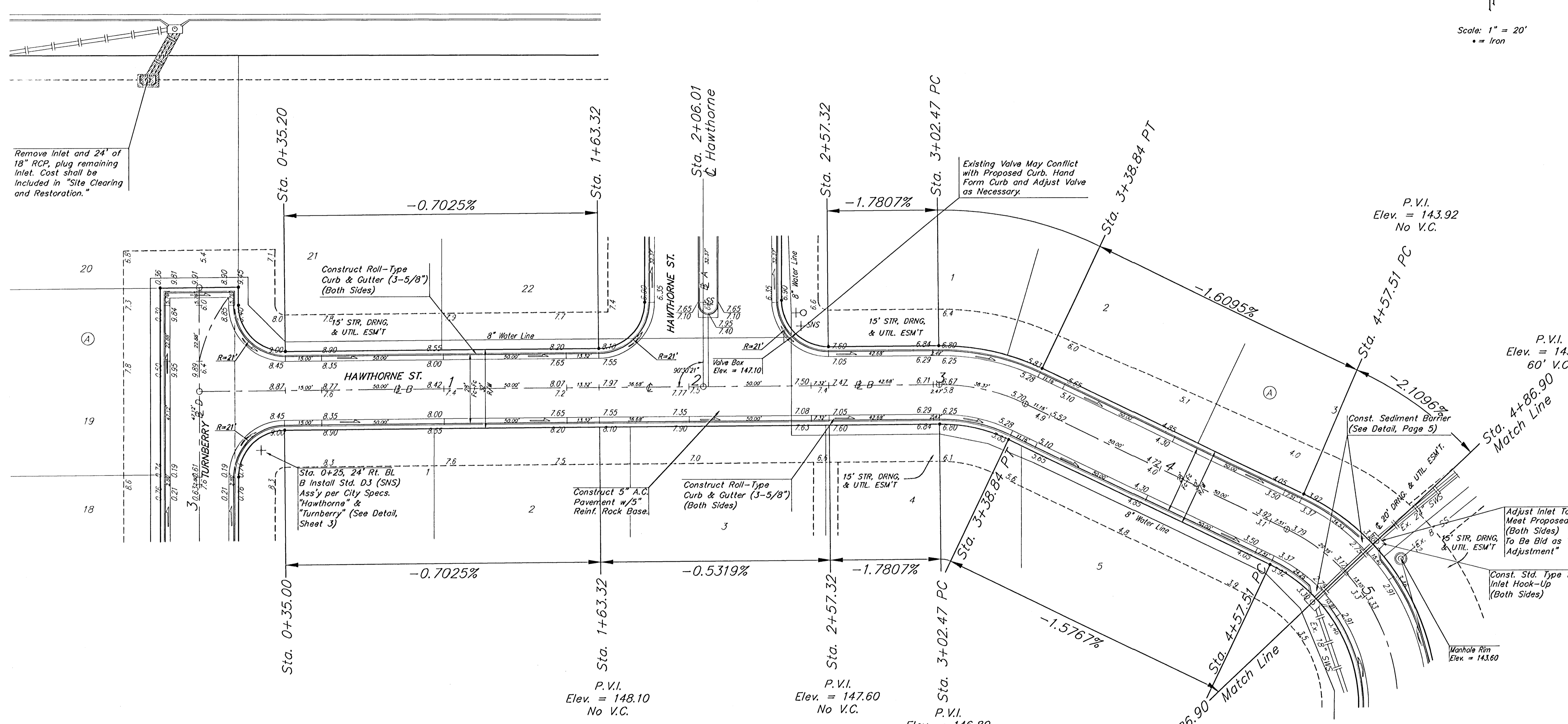


Scale: 1" = 20'
 • = Iron



Remove Inlet and 24' of 18" RCP, plug remaining Inlet. Cost shall be included in "Site Clearing and Restoration."

Existing Valve May Conflict with Proposed Curb, Hand Form Curb and Adjust Valve as Necessary.

P.V.I. Elev. = 143.92
No V.C.

P.V.I. Elev. = 143.30
60' V.C.

Adjust Inlet Top to Meet Proposed Grade (Both Sides) To Be Bid as "Inlet Adjustment"

Const. Std. Type 1A Inlet Hook-Up (Both Sides)

Manhole Rim Elev. = 143.60

BENCHMARKS:
 "□" Cut on Top of Curb, North Side Siefkes, NW of Center Line of Siefkes Ct., Shadybrook Meadow Addition.
 Elev. = 135.19 City Datum
 1322.59 MSL

"x" Cut in Sidewalk North R/W of Siefkes, 135' East of the C.L. of Hawthorne.
 Elev. = 142.94 City Datum
 1330.34 MSL

Roll type curb & gutter to be constructed on the pavement on this sheet. Top of curb elevation are given for full height curb.

Contractor shall grade 15' Street, Drainage, & Utility Easements adjacent to street right-of-way as shown on cross-sections.

P.V.I. Elev. = 143.30
60' V.C.

P.V.I. Elev. = 148.10
No V.C.

P.V.I. Elev. = 147.60
No V.C.

P.V.I. Elev. = 146.80
No V.C.

Shoal Creek Addition
Hawthorne St.
 CITY OF WICHITA

BAUGHMAN COMPANY P.A.
 ENGINEERING, SURVEYING, & PLANNING
 315-262-7271 • 315 ELLIS • WICHITA, KANSAS 67211

PROJECT NUMBER
472-83820

DESIGN NBW	DRAWN SMD	APPROVED	DATE 10/03
SCALE NOTED			SHEET 6 OF 20