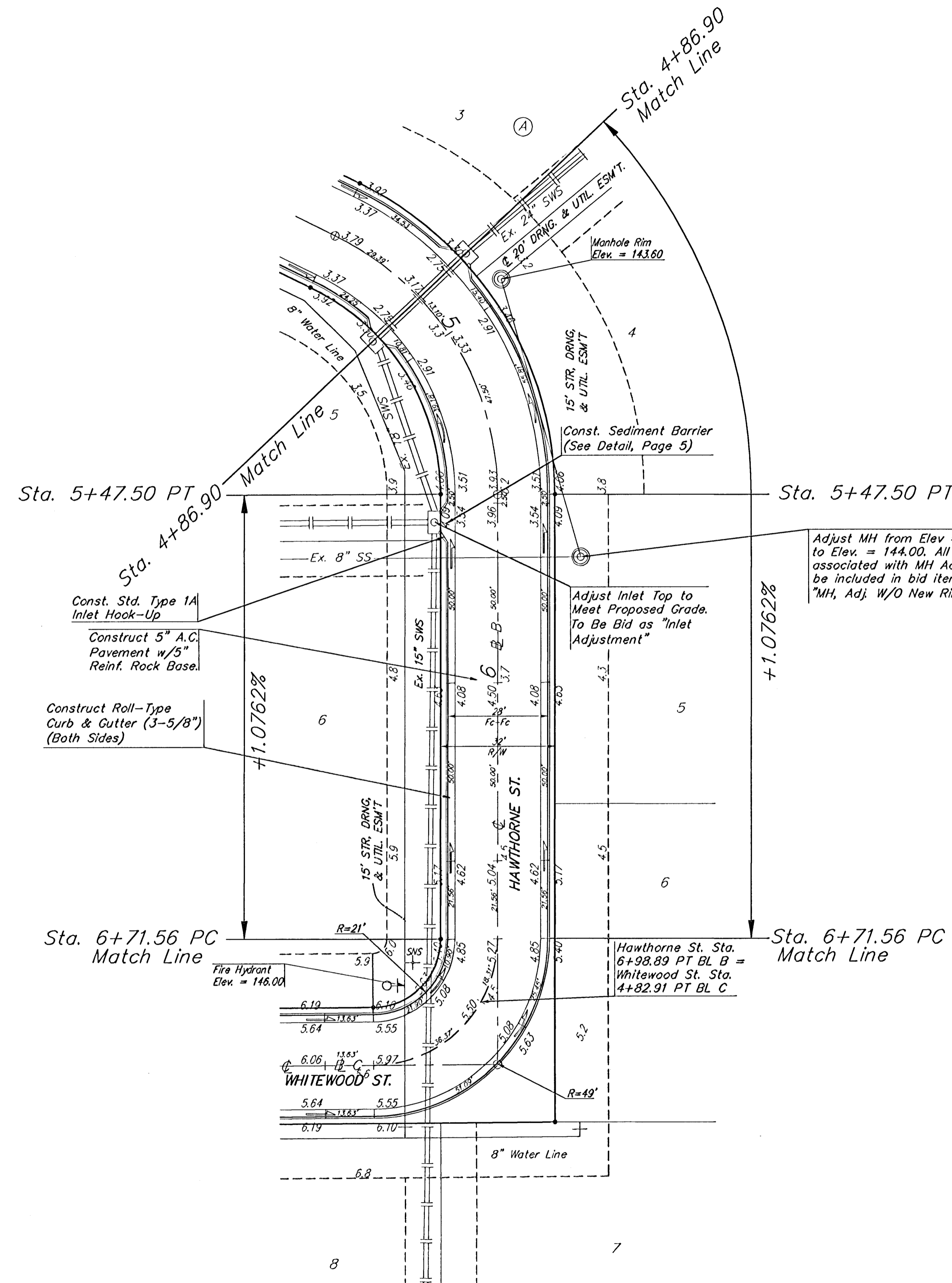
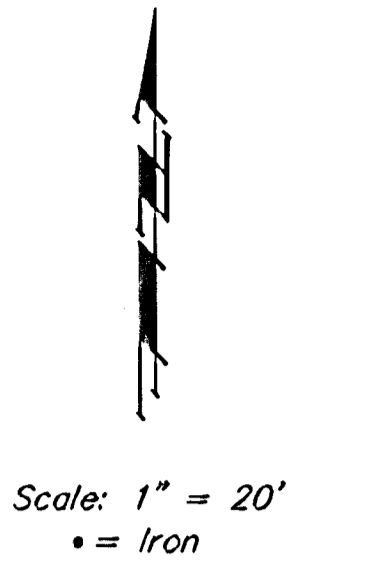


BENCHMARKS:

"□" Cut on Top of Curb, North Side Siefkes, NW of Center Line of Siefkes Ct., Shadybrook Meadow Addition.
Elev. = 135.19 City Datum
1322.59 MSL

"X" Cut in Sidewalk North R/W of Siefkes, 135' East of the C.L. of Hawthorne.
Elev. = 142.94 City Datum
1330.34 MSL



Adjust MH from Elev = 144.60 to Elev = 144.00. All costs associated with MH Adjustment to be included in bid item "MH, Adj. W/O New Ring and Cover".

Adjust Inlet Top to Meet Proposed Grade. To Be Bid as "Inlet Adjustment"

Const. Std. Type 1A Inlet Hook-Up
Construct 5" A.C. Pavement w/5" Reinf. Rock Base.

Construct Roll-Type Curb & Gutter (3-5/8") (Both Sides)

Hawthorne St. Sta. 6+98.89 PT BL. B = Whitewood St. Sta. 4+82.91 PT BL. C

Roll type curb & gutter to be constructed on the pavement on this sheet.
Top of curb elevation are given for full height curb.

Contractor shall grade 15' Street, Drainage, & Utility Easements adjacent to street right-of-way as shown on cross-sections.

Shoal Creek 2nd Addition
Hawthorne St.
CITY OF WICHITA

BAUGHMAN COMPANY P.A.
ENGINEERING, SURVEYING, & PLANNING
316-282-7271 • 315 ELLIS • WICHITA, KANSAS 67211

PROJECT NUMBER
472-83820

DESIGN NBW	DRAWN SMD	APPROVED	DATE 10/03
SCALE NOTED			SHEET 7 OF 20

ShoalCreek2ndAddition str3.dwg