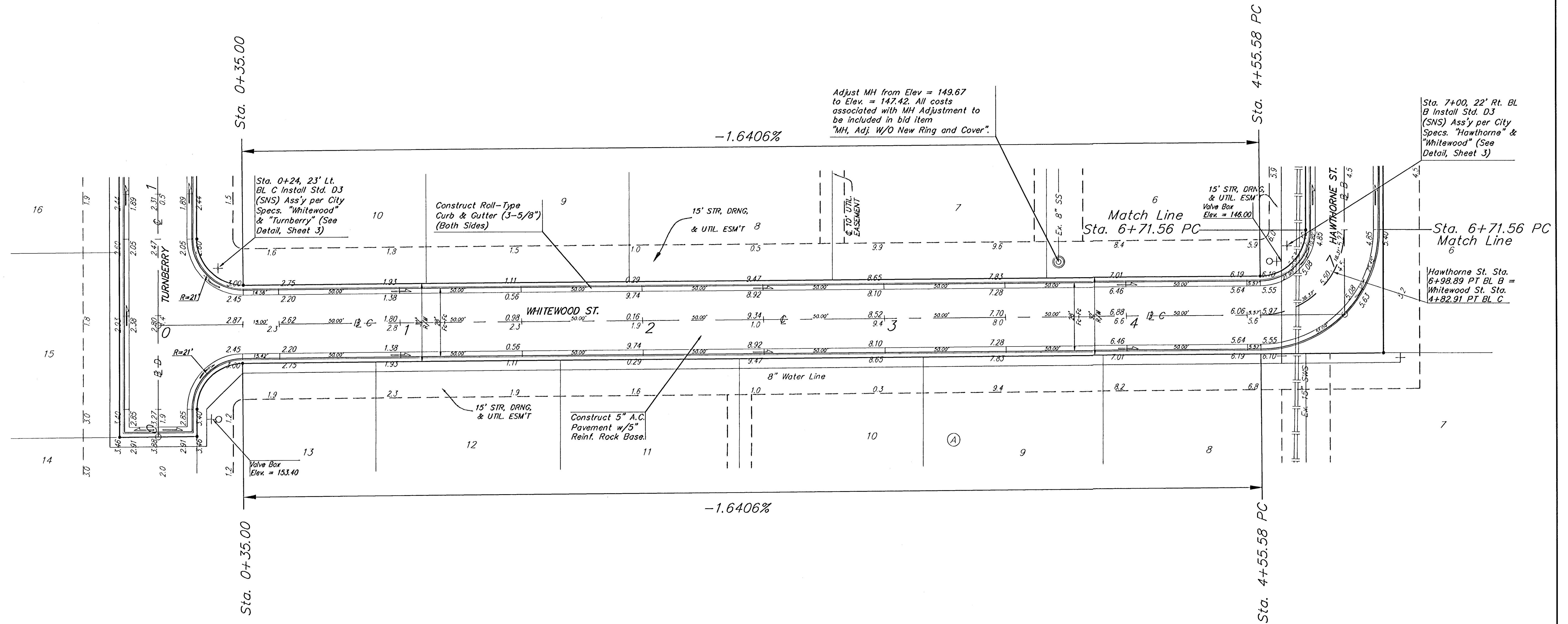
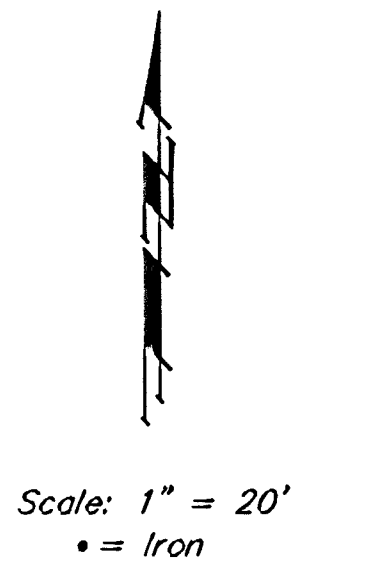


BENCHMARKS:

"□" Cut on Top of Curb, North Side Siefkes, NW of Center Line of Siefkes Ct., Shadybrook Meadow Addition.
Elev. = 135.19 City Datum
1322.59 MSL

"X" Cut in Sidewalk North R/W of Siefkes, 135' East of the C.L. of Hawthorne.
Elev. = 142.94 City Datum
1330.34 MSL



Adjust MH from Elev = 149.67 to Elev. = 147.42. All costs associated with MH Adjustment to be included in bid item "MH, Adj. W/O New Ring and Cover".

Sta. 0+24, 23' Lt. BL C Install Std. D3 (SNS) Ass'y per City Specs. "Whitewood" & "Turnberry" (See Detail, Sheet 3)

Construct Roll-Type Curb & Gutter (3-5/8") (Both Sides)

Match Line Sta. 6+71.56 PC

Sta. 7+00, 22' Rt. BL B Install Std. D3 (SNS) Ass'y per City Specs. "Hawthorne" & "Whitewood" (See Detail, Sheet 3)

Sta. 6+71.56 PC Match Line

Hawthorne St. Sta. 6+98.89 PT BL B = Whitewood St. Sta. 4+82.91 PT BL C

Sta. 0+35.00

Sta. 4+55.58 PC

Roll type curb & gutter to be constructed on the pavement on this sheet. Top of curb elevation are given for full height curb.

Contractor shall grade 15' Street, Drainage, & Utility Easements adjacent to street right-of-way as shown on cross-sections.

Shoal Creek 2nd Addition
Whitewood St.
CITY OF WICHITA

BAUGHMAN COMPANY P.A.
ENGINEERING, SURVEYING, & PLANNING
316-262-7271 • 315 ELLIS • WICHITA, KANSAS 67211

PROJECT NUMBER
472-83820

DESIGN NBW DRAWN SMD APPROVED DATE 10/03 SCALE NOTED SHEET 8 OF 20