

STREET IMPROVEMENTS TO SERVE SMITHMOOR 10TH ADDITION, PHASE 3

WICHITA, KANSAS
Neil D. Cable, P.E., City Engineer
PROJECT NO.: 472-83499
OCA # 765795

Index of Sheets:

- 1 Title
- 2 Typical Section (29' B-B)
- 3 Typical Section (37' B-B)
- 4 Smithmoor Paving
- 5 Smithmoor Paving
- 6 Bluestem Ct. Paving
- 7 Eyebrow Detail
- 8 Signing Details
- 9 Valley Gutter Detail
- 10 Storm Sewer Plan and Profile
- 11 Storm Sewer Plan and Profile
- 12 Typical 1-A Inlet Details (Double)
- 13 Type 1-A Single
- 14 Reinforced Concrete MH
- 15-17 BMP Details
- 18-21 Cross Sections

GENERAL NOTES

1. Contractor will be required to provide notice to utility companies a minimum of twenty-four (24) hours prior to any excavation, as follows:

Kansas One-Call 687-2470

The Contractor must notify the following in case of an emergency:

Cox Communications 262-4270
or 263-2061
K.P.L. Gas Service Company 383-8650
Westar Energy 832-3168

Southwestern Bell Telephone Company 1-571-2611
City of Wichita Water Department 268-4908
City of Wichita Sewer Department 268-4071
Kansas Gas Service 832-3168
or 832-3167

2. Exist. utilities and their locations, as shown on the plans, represent the best information obtainable for design. Location information has been obtained from the various utility companies and is either from company record drawings or company-provided field locations. The Contractor will be required to work around existing utilities which do not conflict with proposed construction.

3. The Contractor to verify utility locations prior to construction of this project.

4. Utility service and installation shall be coordinated with the respective utility owners. Contacts are:

Kansas Gas Service James Stoltz 831-3122
Westar Shane Price 261-6251

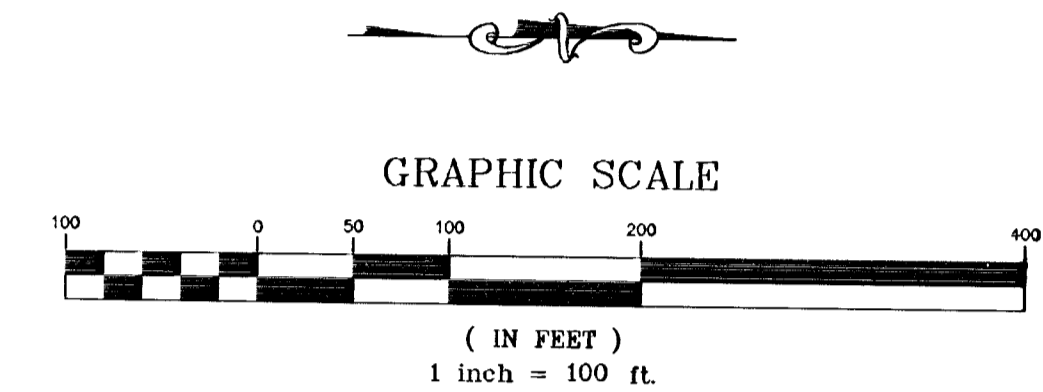
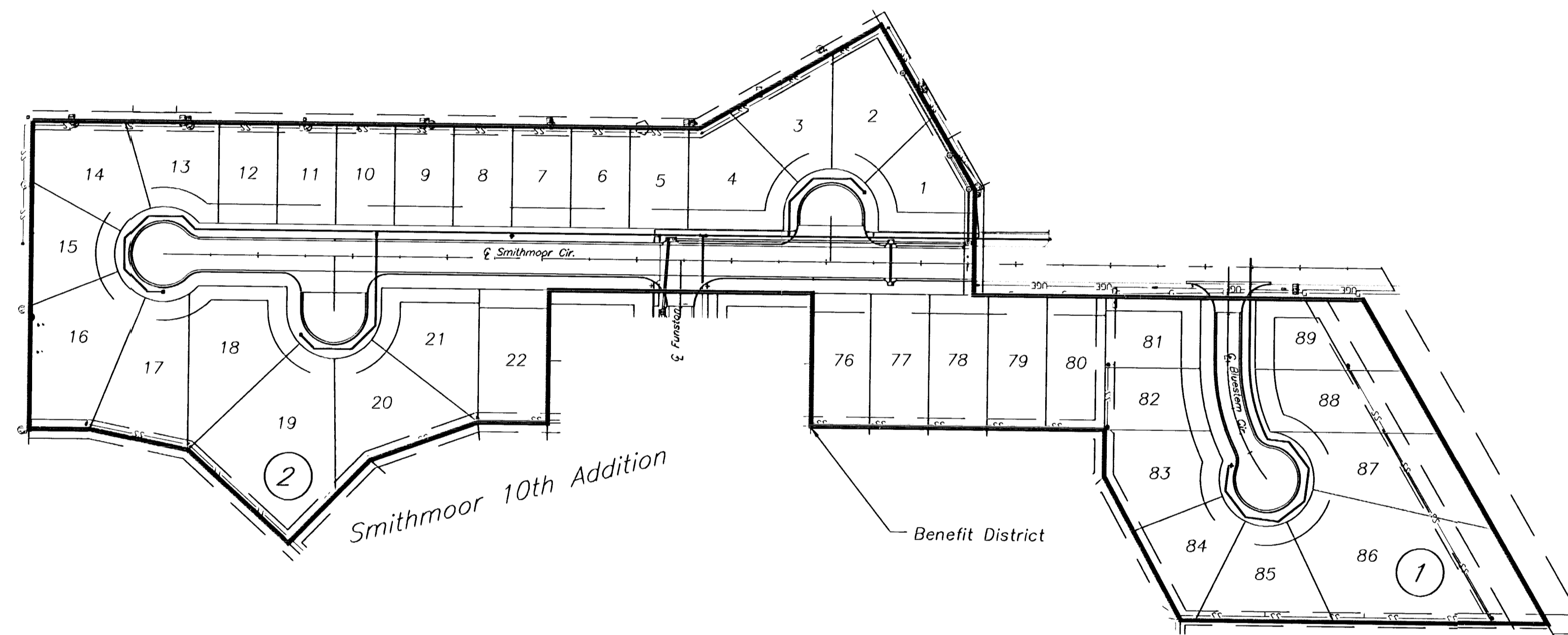
Wichita Water Paul Bryant 268-4555

Southwestern Bell Jim Tobin 268-2759
Cox Communications Mark Anaya 262-4270

5. All lawn/turf areas disturbed by construction of proposed improvements shall be restored with sod. All sodding work shall be in accordance with the City of Wichita standard specifications and the City of Wichita administrative regulation No. AR78 which governs cleanup and replacement following construction. All costs for this work shall be subsidiary to the lump sum price bid for "Site Restoration."

6. Traffic affected by the construction of this project shall be handled in accordance with the latest edition of the Manual on Uniform Traffic Control Devices.

7. Subdivision Bench Marks shall be "Flat Survey Markers No. 8134-08 3" top diameter" provided by Kansas Blue Print Co, Inc. Bench mark installation cost to be subsidiary to curb & gutter.



BENCHMARKS:

BM#1 City disc on the SW corner traffic signal base on the NE corner of the intersection of Harry St. and Greenwich Rd. Elev. = 1343.49 USGS

BM#2 "I" cut on the SW corner of the N. Headwall at the east end of pond on the W. side of Greenwich Rd., approx. 1000' S. of Harry St. Elev. = 1341.87 USGS

PROJECT LENGTH

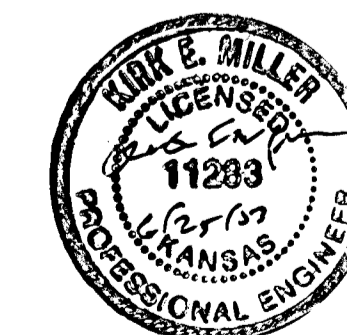
STREET	LENGTH
SMITHMOOR CIR.	891.03
BLUESTEM CIR.	253.12
EYEBROWS	145.48
TOTAL	1289.63

DIRTWORK

Streets

Borrow Excavation	912 CY
Excavation	1204 CY
Compacted Fill (90% Density)	468 CY
Compacted Fill (95% Density)	584 CY
Loose Fill	613 CY

Note: Fill material for this project is available on site.



516 S. Market,
Wichita, KS 67202

316/264-0242